



METAL-FACH



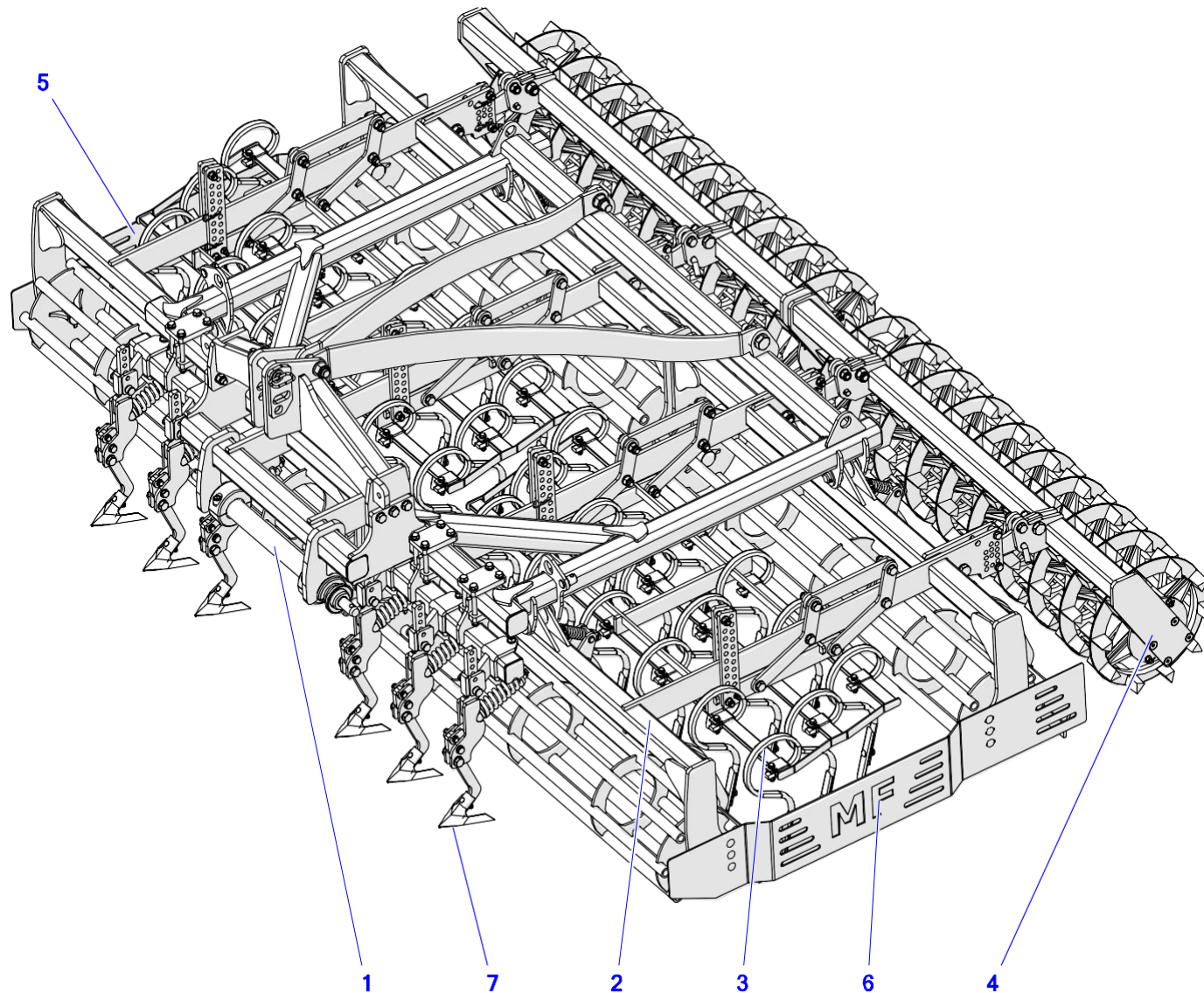
**PRE-SOWING
SPRING-TYPE CULTIVATOR
U457**

**SPARE PARTS CATALOGUE
EDITION I, SEPTEMBER 2017 EN**

TABLE OF CONTENTS

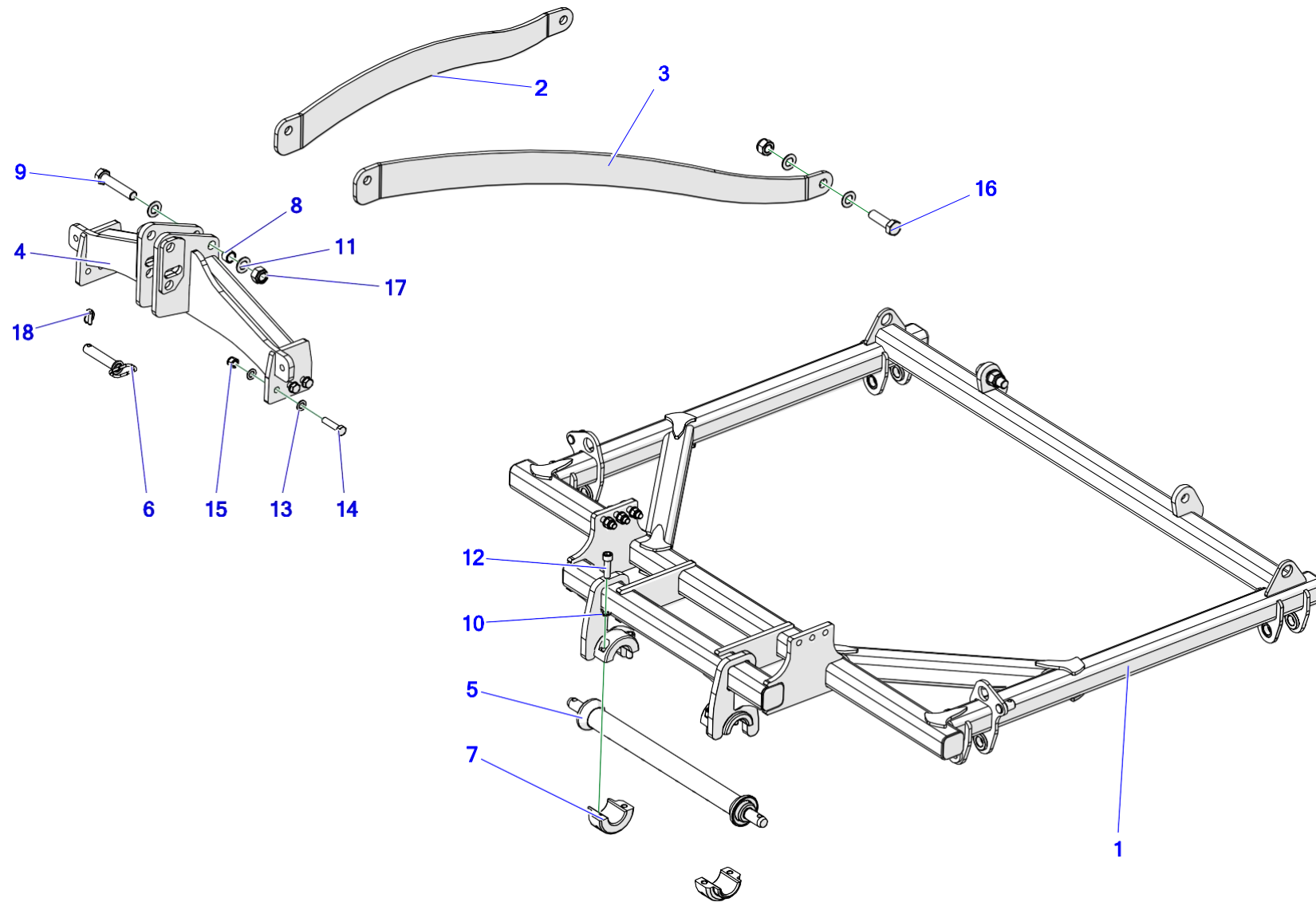
1. U457 PRE-SOWING SPRING-TYPE CULTIVATOR	4
2. MAIN FRAME	6
3. BOTTOM FRAME	8
4. TINE FRAME	10
5. CROSSKILL ROLLER	12
6. TRACK ERADICATOR, COMPLETE	14
7. TRACK ERADICATOR	16

1. U457 PRE-SOWING SPRING-TYPE CULTIVATOR



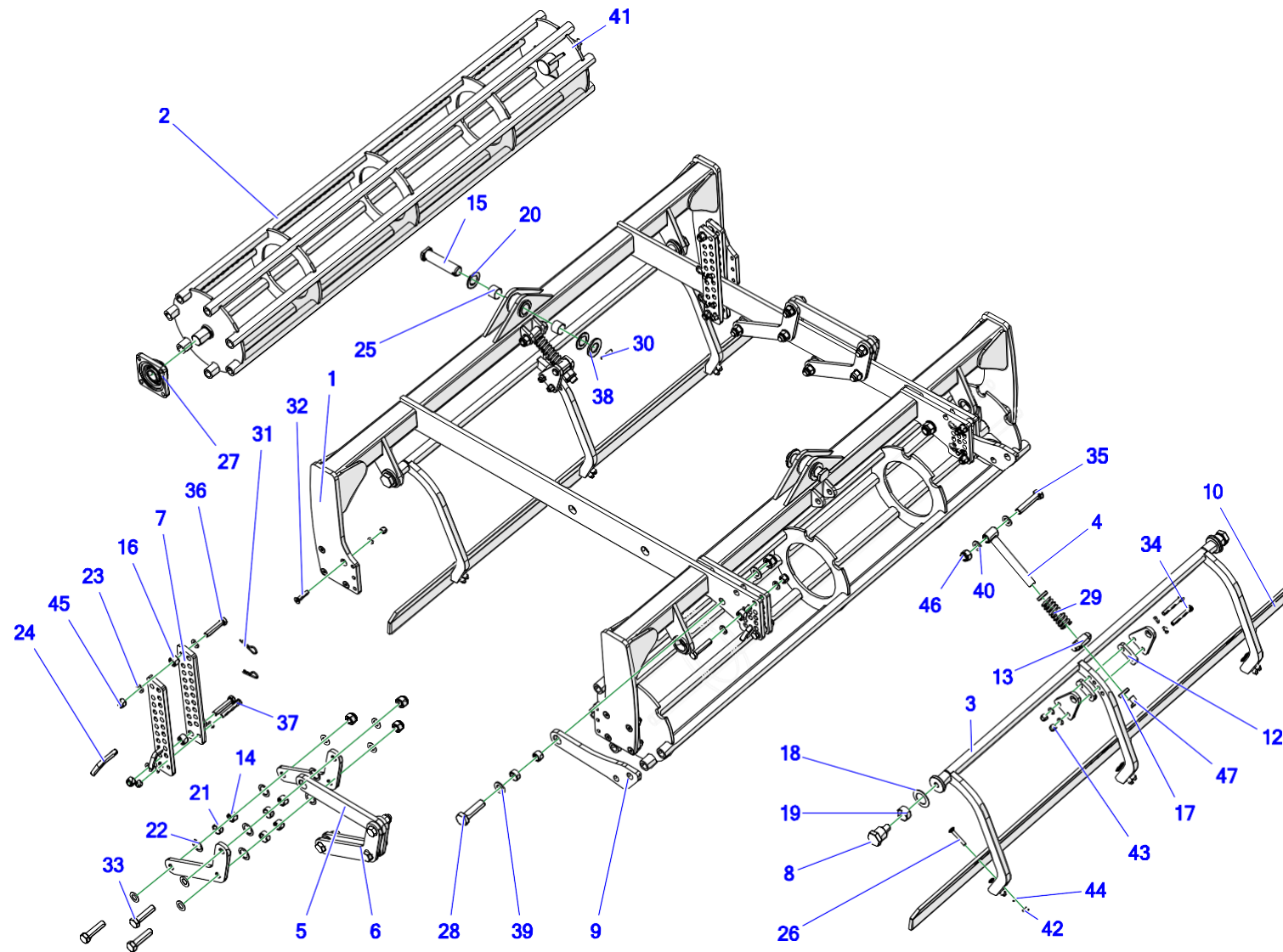
No.	Index	Name	Volume
1	U457 01.00.00	Top frame, complete	1
2	U457 02.00.00	Bottom frame, complete	2
3	U457 03.00.00	Tine frame, complete	2
4	U457 04.00.00	Crosskill roller for the cultivator	2
5	U457 00.00.01	Right-hand side plate	1
6	U457 00.00.02	Left-hand side plate	1
7	U457-SS	Track eradicators	2

2. MAIN FRAME



No.	Index	Name	Volume
1	U457 01.01.00	Top frame	1
2	U457 01.00.01	Upper metal sheet, right	1
3	U457 01.00.02	Upper metal sheet, left	1
4	U786 01.02.00	Three-point connector, top section	1
5	U786 01.03.00	Bottom bar	1
6	U490 01.04.00	Three-point pin connector	1
7	U786 01.00.04	Threaded hoof	2
8	U490 01.00.03	Spacer bushing	1
9	POD-ELZ-000696	Bolt 30 x 150oc 10.9 82101	1
10	23P20SP	Spring washer 20.5 galv. 82008 82008	4
11	23P30OOC	Round washer 30 galv. 82005 82005	6
12	POD-ELZ-000866	Allen bolt 20 x 70oc 10.9 82302	4
13	23P20OOC	Washer, round 20 galv. 82005 82005	12
14	23S20/80 8.8 GALV	Bolt 20 x 80 galv. 82101 82101	6
15	23NS20OC 82175	Self-locking nut M20 galv. 82175 8 82175 8	6
16	POD-ELZ-000390	Bolt 30 x 100 galv. 8.8 82101	2
17	POD-ELZ-000042-1	Self-locking nut M30 galv. 82175	3
18	23PR11	Cotter pin with a ring 11	1

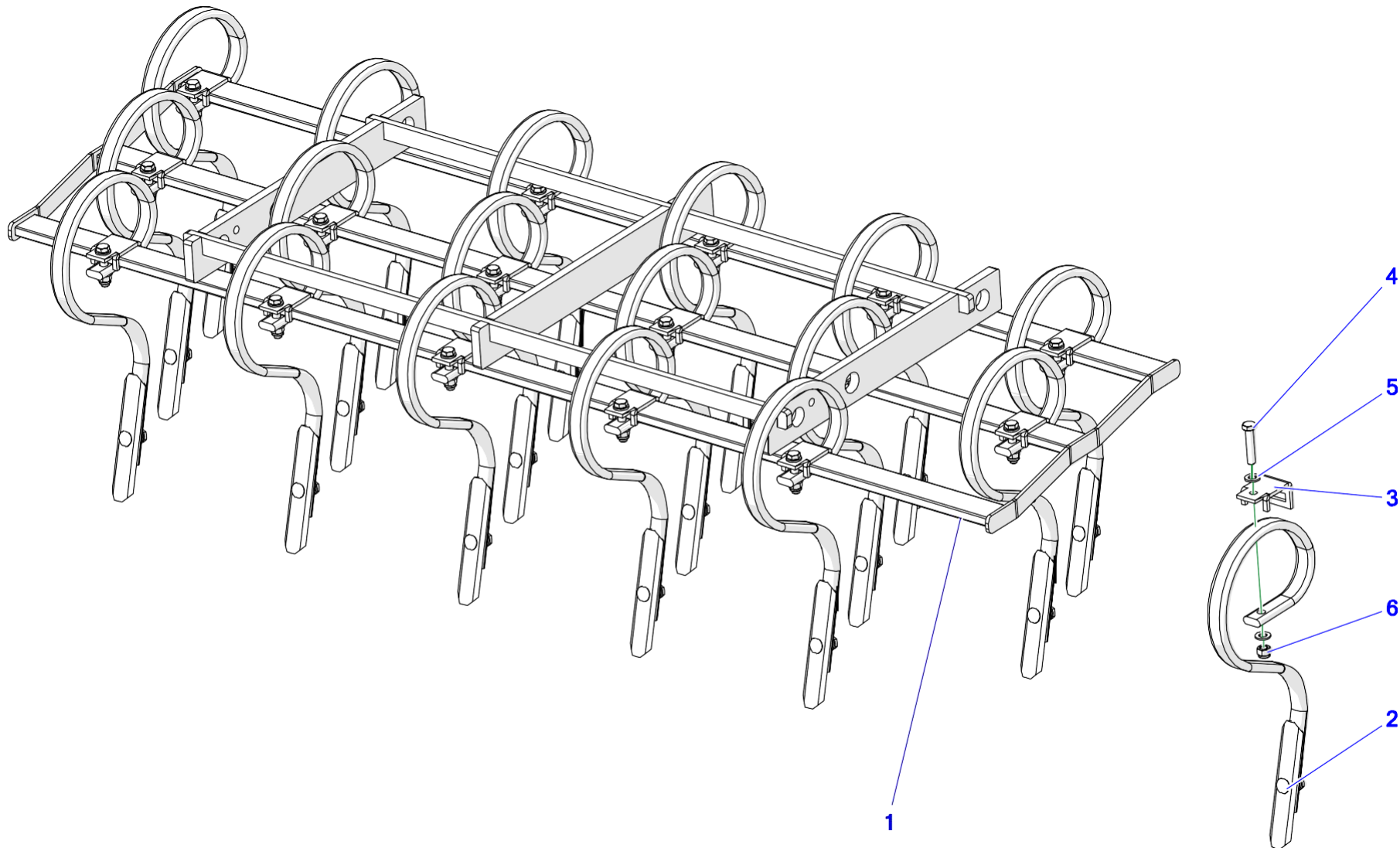
3. BOTTOM FRAME



No.	Index	Name	Volume
1	U457 02.01.00	Bottom frame	1
2	U457 02.02.00	Pipe roller for the cultivator	2
3	U457 02.03.00	Leveller support	2
4	U457 02.04.00	Adjustment of the harrow	2
5	U457 02.00.01	Coupling	2
6	U457 02.00.02	Tine frame arm	8
7	U457 02.00.03	Adjustment plate	4
8	U457 02.00.04	Harrow support bolt	4
9	U457 02.00.05	Roller metal plate	2
10	U457 02.00.06	Harrow metal plate	2
11	U457 02.00.07	Harrow eye	4
12	U457 02.00.08	Eye spacer	4
13	U457 02.00.09	Harrow spring joint	2
14	U457 02.00.10	Spacer bushing	14
15	U457 02.00.11	Bottom frame bolt	2
16	U457 02.00.12	Spacer bushing 2	8
17	U457 02.00.13	Spring washer	4
18	POD-LOZ-000292	GTM-4266-015 washer	4
19	POD-LOZ-000290	Bushing GSM-4044-20	4
20	POD-LOZ-000294	GTM-3862-015 washer	4
21	POD-LOZ-000291	Bushing GSM-3034-15	14
22	POD-LOZ-000293	GTM-3246-010 washer	24
23	23P16OOC	Washer, round 16 galv. 82005 82005	16
24	U-710 02.00.08	Adjustment pin II	8
25	POD-LOZ-000203	Bush GSM-3539-30	4
26	POD-ELZ-000899	Carriage bolt 10 x 65 galv. 8.8 82406	12

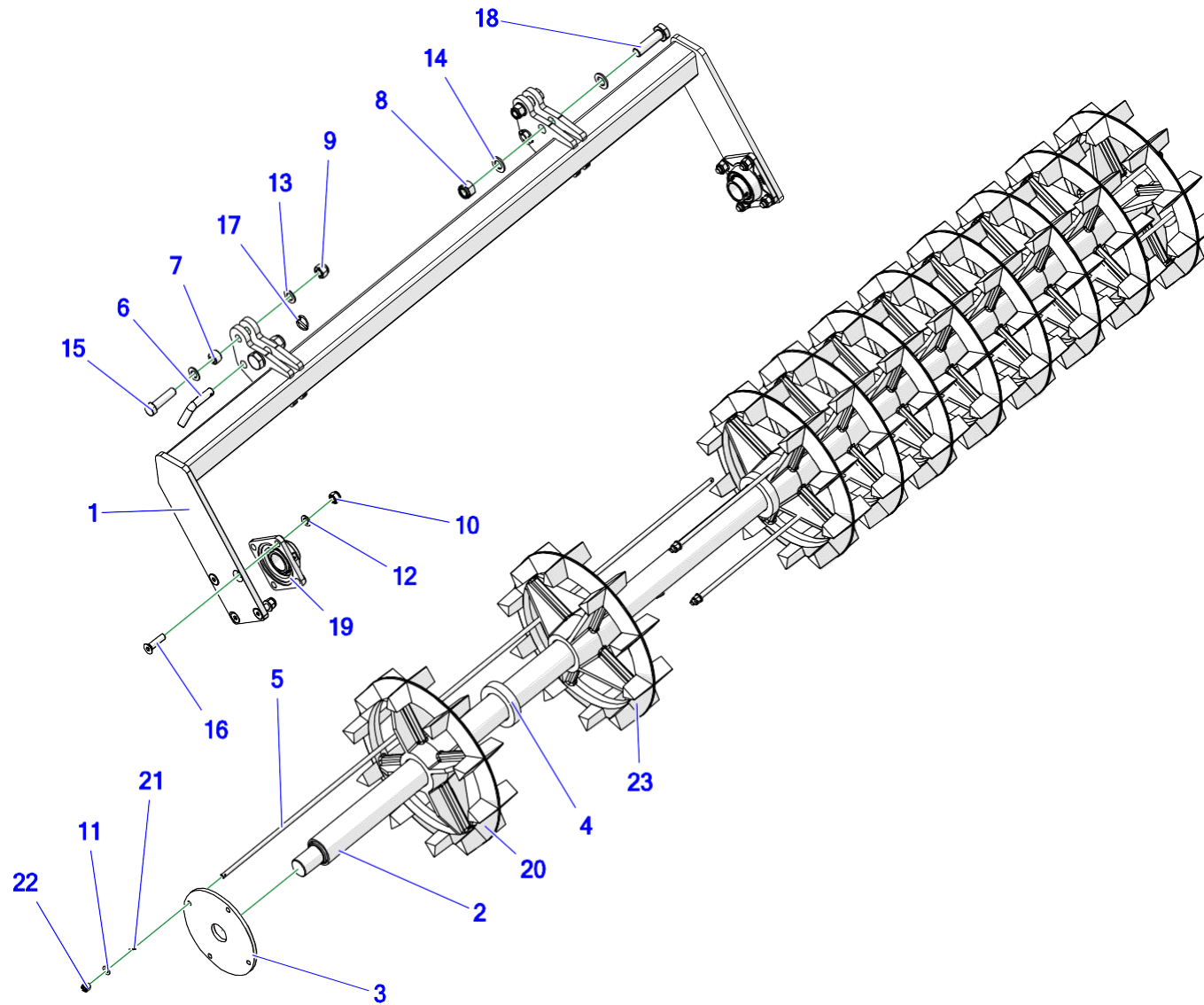
No.	Index	Name	Volume
27	POD-LOZ-000282	FY 40TR bearing assembly	4
28	POD-ELZ-000853	Bolt 24 x 90 galv. 10.9 82101	2
29	23SS7/40/110	Tension spring 7/41/110/10, galv. (maz-1785)	2
30	23K8/50	Resilient stud 8 x 50 DIN 1481	2
31	23ZRFI4	Elastic single cotter pin 4 (R-letter shaped, single)	8
32	POD-ELZ-000829	Countersunk screw 12 x 55 galv. 10.9 DIN7991	16
33	POD-ELZ-000775	Bolt 20 x 80 galv. 10.9 82105	12
34	23S12/90 101OC	Bolt 12 x 90 galv. 8.8 82101 82101	4
35	23S20/100OC 8.8	Bolt 20 x 100 galv. 8.8 82101 82101	2
36	23S16/80OC 8.8	Screw 16 x 80 galv. 8.8 82101 82101	8
37	23S12/80OC 8.8	Bolt 12 x 80 galv. 8.8 82101 82101	2
38	23P36OOC	Round washer 30, galv. 82005 82005	2
39	23P24OC	Round washer, 24 galv. 82005 82005	4
40	23P20OOC	Round washer 20 galv. 82005 82005	28
41	23P12OC	Round washer 12 galv. 82005	28
42	23NS10OC	Nut, self-locking M10 galv. 82175 8 82175 8	12
43	23NS12OC	Nut, self-locking M12 galv. 82175 8 82175 8	22
44	23P10 82005	Round washer 30, galv. 82005 82005	12
45	23NS16OC	Nut, self-locking M16 galv. 82175 8 82175 8	8
46	23NS20OC 82175	Self-locking nut M20 galv. 82175 8 82175 8	14
47	POD-ELZ-000399	Self-locking nut M24 galv. 8 82175	4

4. TINE FRAME



No.	Index	Name	Volume
1	U457 03.01.00	Tine frame	1
2	POD-OGL-000900	Cultivator spring with a drill opener B231 32 x 12	18
3	POD-OGL-000927	Cap for lightweight tooth 1417/00-006/2	18
4	POD-ELZ-000053-1	Bolt 12 x 60oc 10.9 82101	18
5	23P12OC	Round washer 12 galv. 82005	36
6	23NS12OC	Self-locking nut 12 galv. 82175 8 82175 8	18

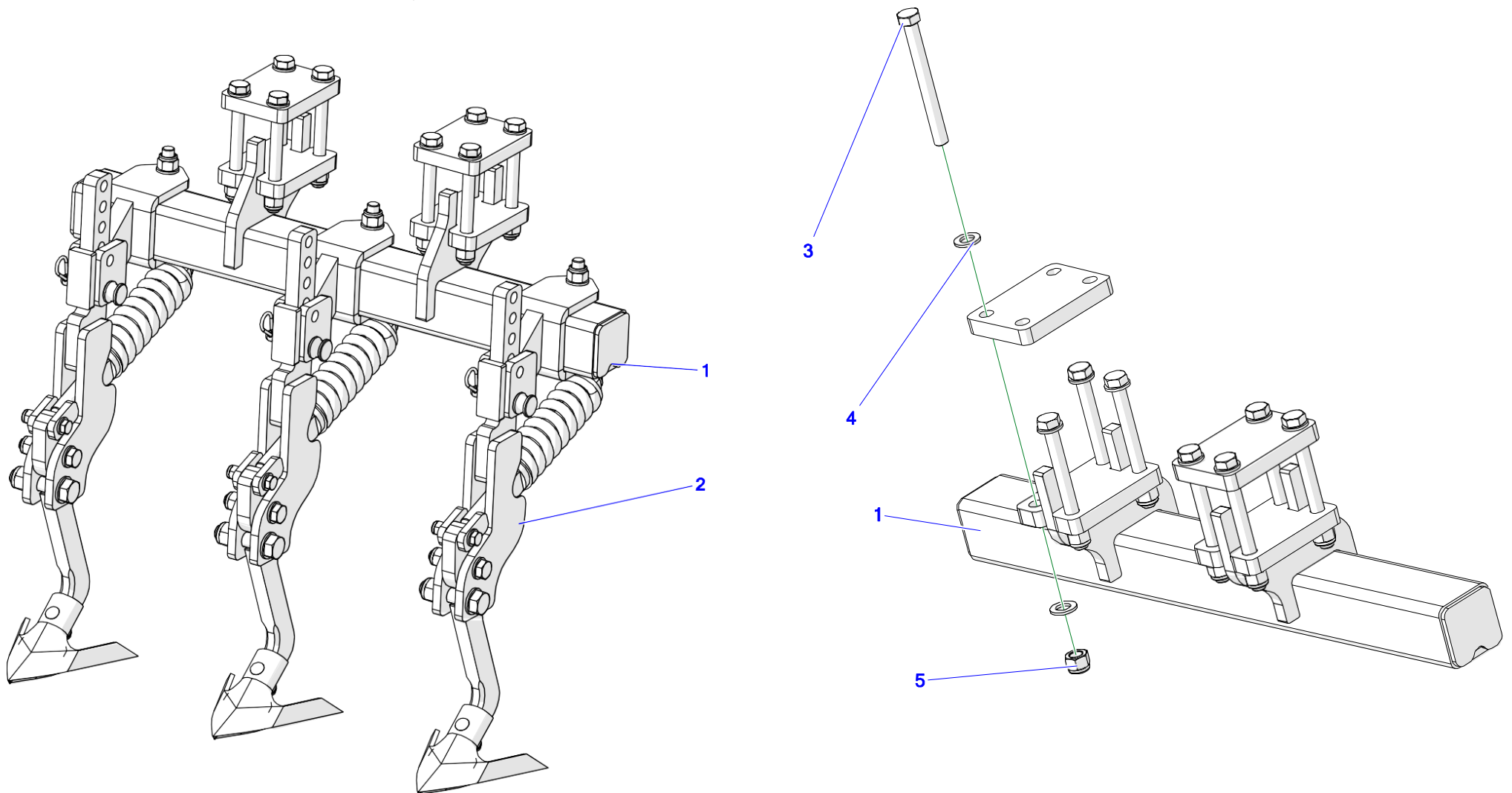
5. CROSSKILL ROLLER



No.	Index	Name	Volume
1	U457 04.01.00	Crosskill roller frame	1
2	U457 04.02.00	Welded pipe of the Crosskill roller	1
3	U457 04.00.01	Crosskill roller disc	2
4	U457 04.00.03	Distance ring	9
5	U457 04.00.02	Threaded bar of the Crosskill roller	4
6	U741 00.00.04	Roller adjustment pin	2
7	U457 02.00.12	Spacer bushing 2	2
8	POD-ELZ-000399	Self-locking nut M24 galv. 8 82175	2
9	23NS20OC 82175	Self-locking nut M20 galv. 82175 8 82175 8	2
10	23NS16OC	Nut, self-locking M16 galv. 82175 8 82175 8	8
11	23P12OC	Round washer 12 galv. 82005	8
12	23P16OOC	Round washer 16 galv. 82005 82005	8
13	23P20OOC	Washer, round 20 galv. 82005 82005	4
14	23P24OC	Round rasher 24 galv. 82005 82005	4
15	23S20/80 8.8 OC	Bolt 20 x 80 galv. 82101 82101	2
16	POD-ELZ-000693	Counter sunk Allen screw 16 x 60 galv. 10.9 DIN7991	8
17	POD-ELZ-000444	Cotter pin with a ring 4.5 mm	2
18	POD-ELZ-000853	Bolt 24 x 90 galv. 10.9 82101	2

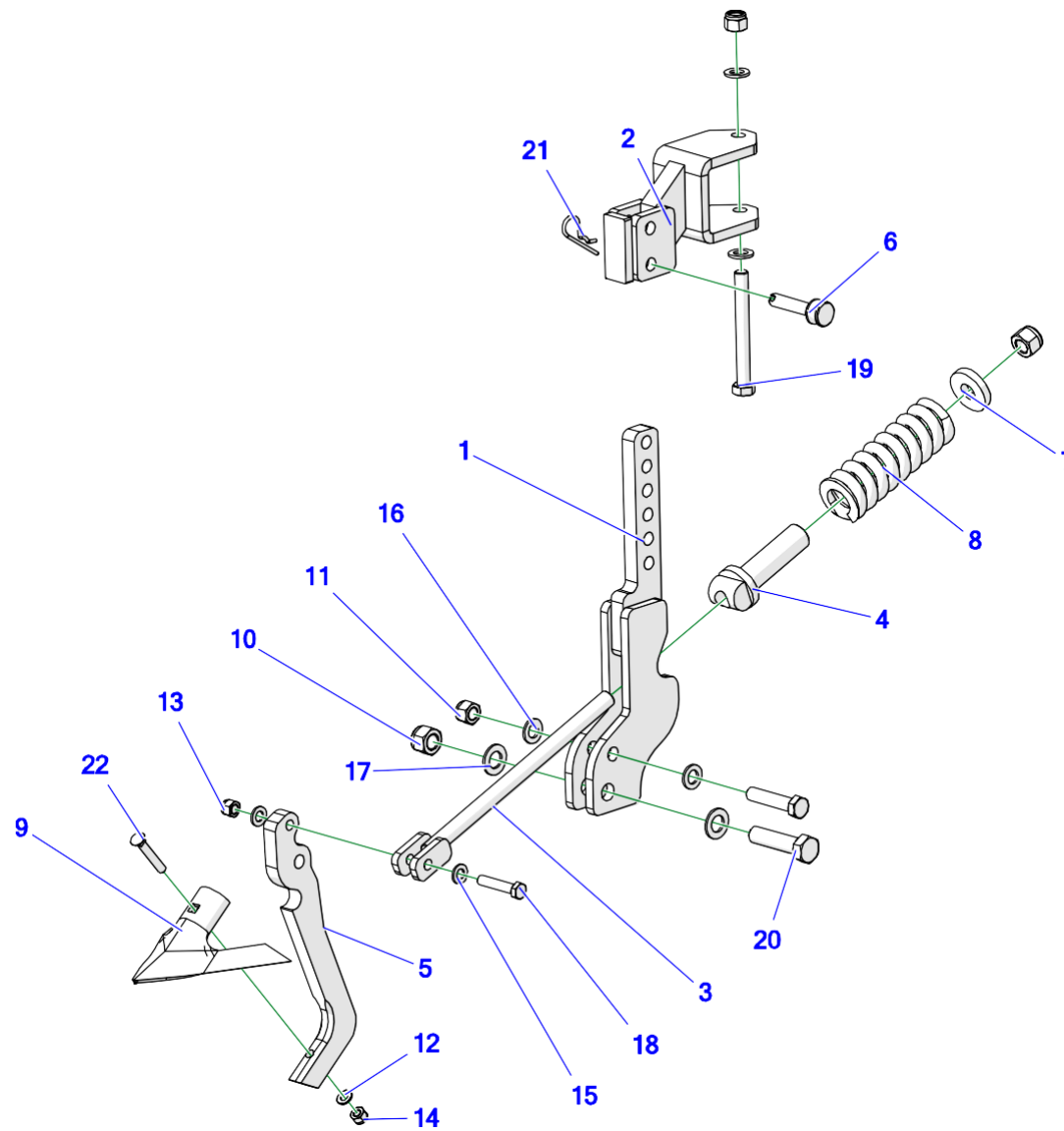
No.	Index	Name	Volume
19	POD-LOZ-000244	Bearing assembly FY 50 TR	2
20	U457 04.00.04	Extreme Crosskill roller wheel	2
21	23Z3.2-25OC	Cotter pin 3.2 x 25 galv.	8
22	POD-ELZ-000896	Castellated nut M12 galv. 82148	8
23	POD-TSZ-000257	Crosskill roller wheel	8

6. TRACK ERADICATOR, COMPLETE



No.	Index	Name	Volume
1	U457 05.01.00	Track eradicator support	1
2	U457 05.00.01	Support mounting plate	2
3	POD-ELZ-000826	Bolt 16 x 160 galv. 10.9 82101	8
4	23P16OOC	Round washer 16 galv. 82005 82005	16
5	23NS16OC	Self-locking nut M16 galv. 82175 8 82175 8	8

7. TRACK ERADICATOR



No.	Index	Name	Volume
1	U457 06.01.00	Adjustment support for track eradicator	1
2	U457 06.02.00	Adjustment support mounting	1
3	U457 06.03.00	Spring screw	1
4	U457 06.04.00	Spring guidance	1
5	U457 06.00.01	Duckfoot share arm	1
6	U457 06.00.02	Track eradicator pin	1
7	U457 06.00.03	Spring washer	1
8	POD-SPR-000103	Compression spring 14/62/175/9 FED	1
9	POD-OGL-001031	Duckfoot share 180/1, open	1
10	23NS20OC 82175	Self-locking nut M20 galv. 82175 8 82175 8	2
11	23NS16OC	Self-locking nut M16 galv. 82175 8 82175 8	2
12	23P10 82005	Round washer 10 galv. 82005 82005	1
13	23NS12OC	Self-locking nut 12 galv. 82175 8 82175 8	1
14	23NS10OC	Self-locking nut M10 galv. 82175 8 82175 8	1
15	23P12OC	Round washer 12 galv. 82005	2
16	23P16OOC	Round washer 16 galv. 82005 82005	4
17	23P20OOC	Washer, round 20 galv. 82005 82005	2

No.	Index	Name	Volume
18	23S1	Bolt 1	2
19	23S16/140OC 8.8	Bolt 16 x 140 galv. 8.8 82101 82101	1
20	23S20/80 8.8 OC	Bolt 20 x 80 galv. 82101 82101	1
21	23ZRFI4	Elastic single cotter pin 4 (R-letter shaped, single)	1
22	POD-ELZ-000900	Plough bolt M10 x 55 10.9	1



Metal-Fach Sp. z o.o. is constantly improving its products and adjusting its package to the needs of its customers, so it reserves the right to make changes to its product range without notice. Therefore, before making your purchase decision, please contact an authorised dealer or sales representative of Metal-Fach Sp. z o.o.

Metal-Fach Sp. z o.o. will not accept any complaints regarding the data and pictures contained in the catalogue, as the presented range of products does not constitute an offer within the meaning of the provisions of the Civil Code.

The pictures do not necessarily show standard accessories.

Original spare parts are available from authorised dealers, both in Poland and abroad, and also at the Metal-Fach retail outlet.

TECHNICAL SERVICE

16-100 Sokółka, ul. Kresowa 62
phone: +48 85 711 07 80; fax: +48 85 711 07 93
serwis@metalfach.com.pl

SALES

16-100 Sokółka, ul. Kresowa 62
phone: +48 85 711 07 78; fax: +48 85 711 07 89
handel@metalfach.com.pl

SPARE PARTS WHOLESALE STORE

16-100 Sokółka, ul. Kresowa 62

Wholesale:

phone: 85 711 07 81; fax: 85,711 07 93
hurtownia@metalfach.com.pl

Spare parts - retail sales

24/7 PHONE: +48 533 111 477
Phone: +48 85 711 07 90
sklep.kontakt@metalfach.com.pl

CURRENT INFORMATION ABOUT OUR PRODUCTS CAN BE FOUND ON WWW.METALFACH.COM.PL