

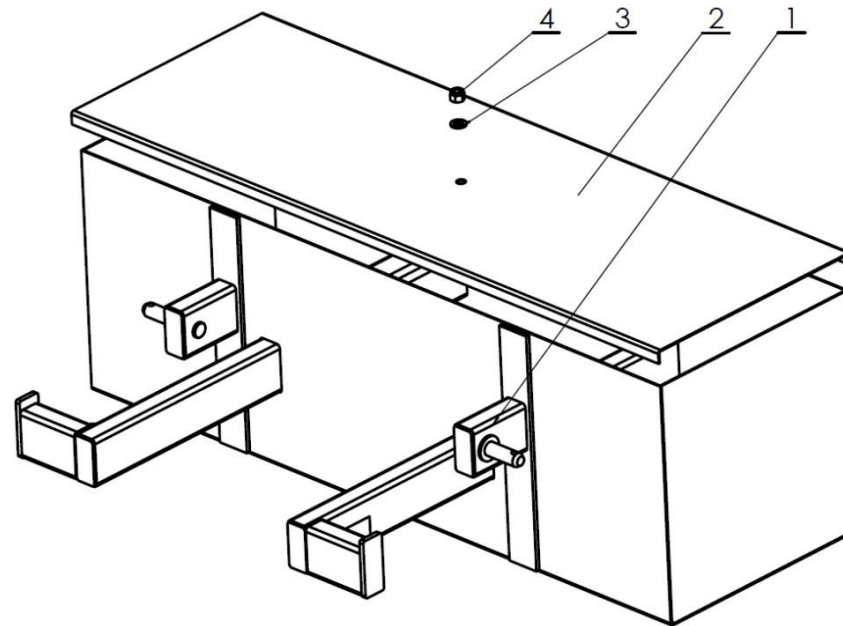


METAL-FACH



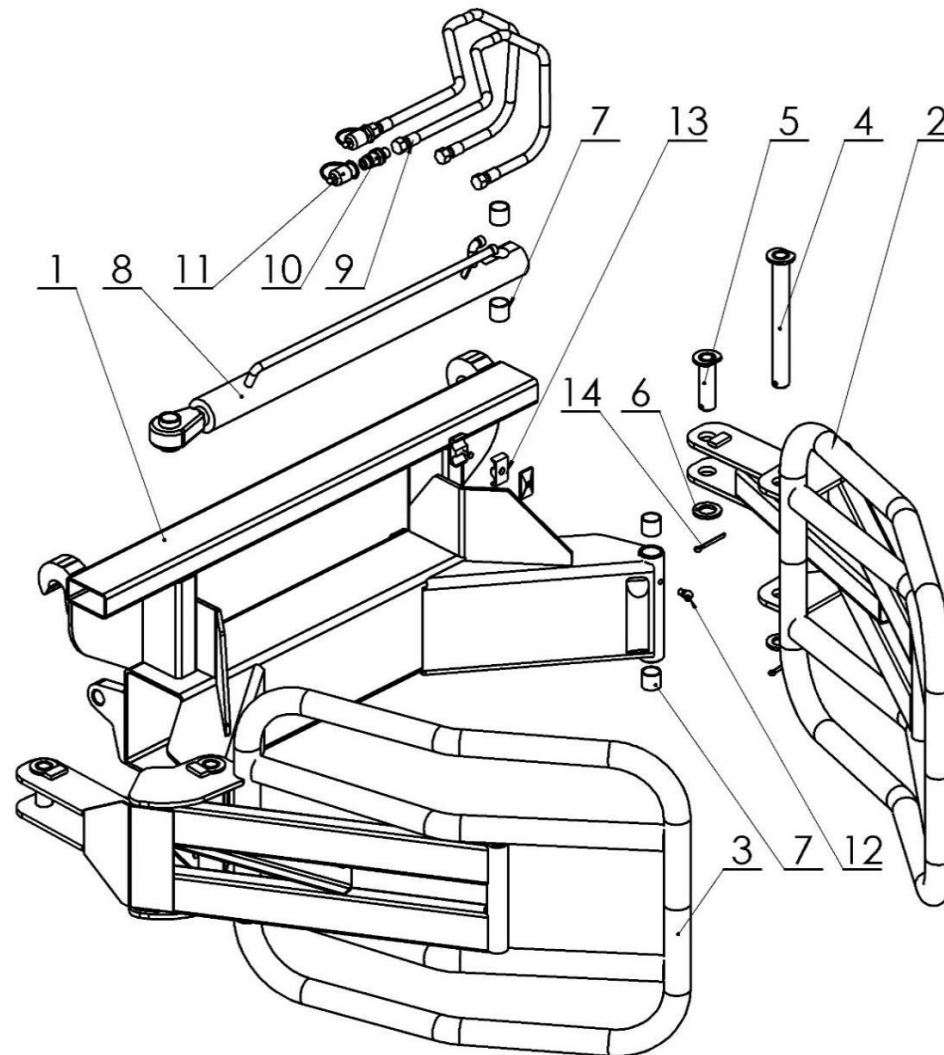
ATTACHMENTS - FRONT LOADERS
SPARE PARTS CATALOGUE
EDITION I, JANUARY 2018 EN

1. BALLAST BOX



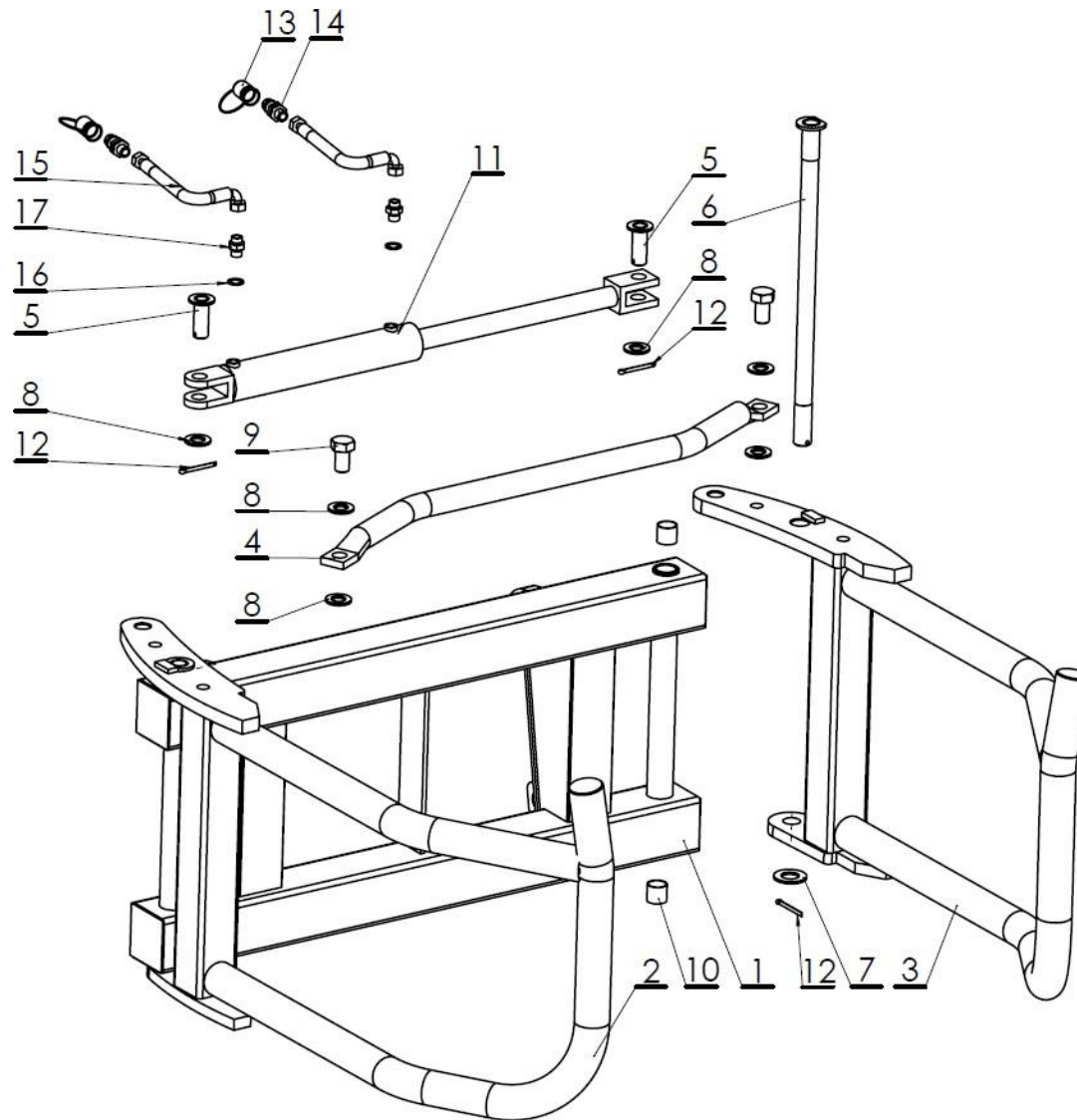
No.	Name	Fig. or index No.			
		OL.BL650	Volume	OL.BL800	Volume
1	Welded container	OL.BL 650 01.00.00	1	OL.BL 800 01.00.00	1
2	Lid	OL.BL 650 00.00.02	1	OL.BL 800 00.00.02	1
3	Round washer 17	23P16OOC	1	23P16OOC	1
4	Self-locking nut M16	23NS16OC	1	23NS16OC	1

2. BALE GRABBER (STANDARD VERSION)



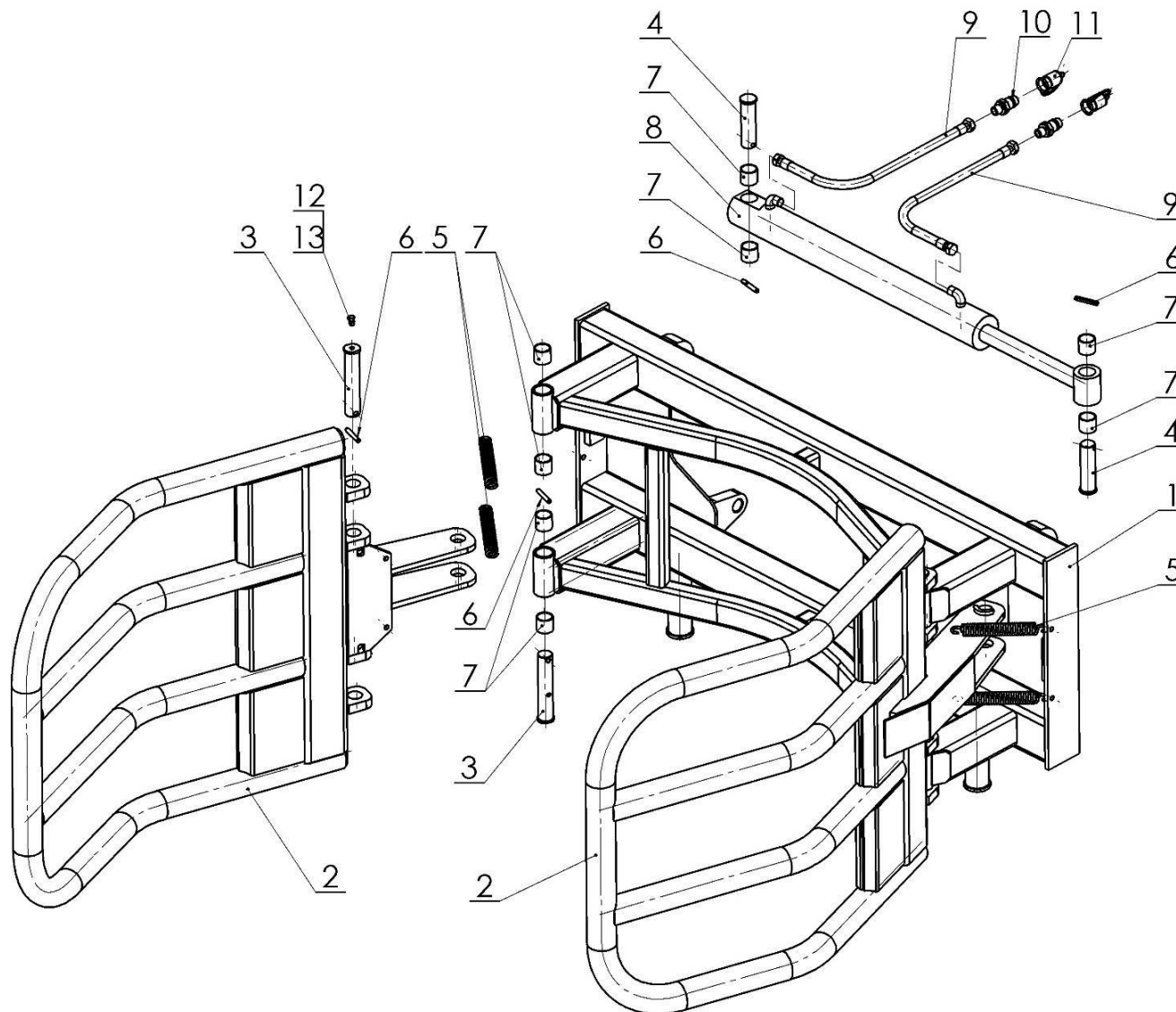
No.	Name	Fig. or index No.			
		OL.CH 3	Volume	OL.CH 3 E	Volume
1	Welded frame	OL.CH 01.00.00.4	1	OL.CH 01.00.00.5E	1
2	Bale grapple arm set L	OL.CH 02.00.00.3L	1	OL.CH 02.00.00.3L	1
3	Bale grapple arm set P	OL.CH 02.00.00.3P	1	OL.CH 02.00.00.3P	1
4	Pin I	OL.CH 00.03.00.1	2	OL.CH 00.03.00.1	2
5	Pin II	OL.CH 00.04.00.1	2	OL.CH 00.04.00.1	2
6	Round washer 30	POD-ELZ-000507	13	POD-ELZ-000507	13
7	Self-lubricating sleeve	POD-LOZ-000021-1	4	POD-LOZ-000021-1	4
8	Hydraulic cylinder	POD-HSL-000094	1	POD-HSL-000094	1
9	Flexible hydraulic hose	AA/111/10 L2600	2	AA/111/10 L2600	2
10	Euro valve-plug M18 x 1.5	24ZWE13-M18X1.5	2	24ZWE13-M18X1.5	2
11	Plug valve adapter	24ZWNE13	2	24ZWNE13	2
12	Lubricating nipple M10 x 1.0 45 angle	23SM10KAT45	2	23SM10KAT45	2
13	HBK handle	POD-HPZ-000005-1	1	POD-HPZ-000005-1	1
14	Cotter pin 6.3 x 63	23Z6/63	4	23Z6/63	4

3. BALE GRABBER (LIGHTWEIGHT VERSION)



No.	Name	Fig. or index No.			
		OL.CH	Volume	OL.CH E	Volume
1	Grapple frame	OL.CH 2 01.00.00	1	OL.CH 2 01.00.00.2E	1
2	Right grapple arm	OL.CH 2 02.00.00.1P	1	OL.CH 2 02.00.00.1P	1
3	Left grapple arm	OL.CH 2 02.00.00.1L	1	OL.CH 2 02.00.00.1L	1
4	Spacer	OL.CH 2 00.00.03	1	OL.CH 2 00.00.03	1
5	Pin I set	OL.CH 2 00.04.00	2	OL.CH 2 00.04.00	2
6	Pin II complete	OL.CH 2 00.05.00	2	OL.CH 2 00.05.00	2
7	Self-lubricating sleeve	POD-LOZ-000021-1	4	POD-LOZ-000021-1	4
8	Round washer 31	23P30OOC	2	23P30OOC	2
9	Cotter pin 6.3 x 63	23Z6/63	4	23Z6/63	4
10	Bolt 24 x 50	POD-ELZ-000445	2	POD-ELZ-000445	2
11	Round washer 25	23P24OC	6	23P24OC	6
12	Hydraulic cylinder	24SCJ1.63/36*250	1	24SCJ1.63/36*250	1
13	Straight connector	POD-HKR-000040	2	POD-HKR-000040	2
14	Flexible hydraulic hose	24PAA90/111/10 L-1500	2	24PA90A10-2000 10/13	2
15	Euro valve-plug M18 x 1.5	24ZWE13-M18X1.5	2	24ZWE13-M18X1.5	2
16	Plug valve adapter	24ZWNE13	2	24ZWNE13	2

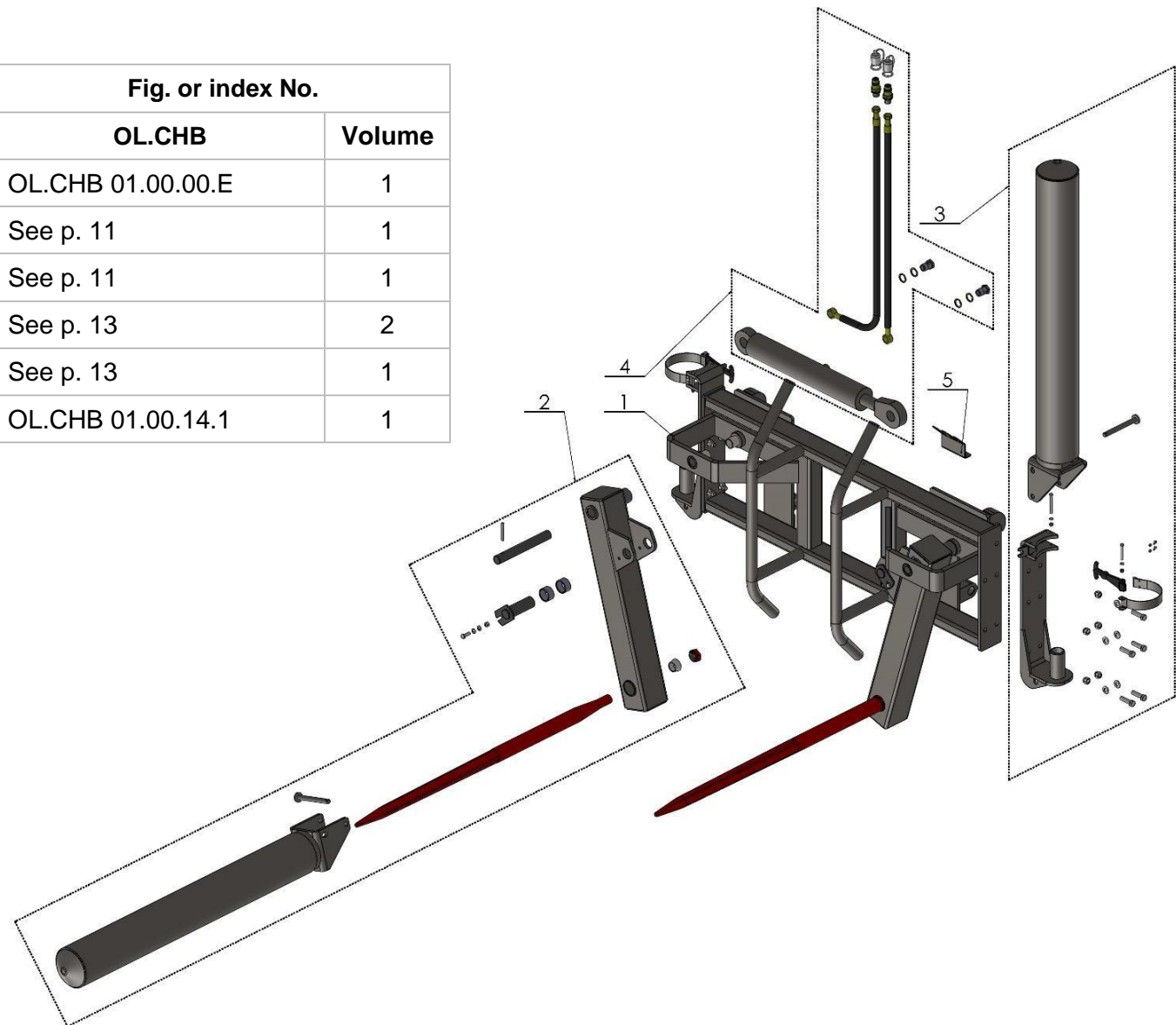
4. BALE GRABBER (HEAVYWEIGHT VERSION)



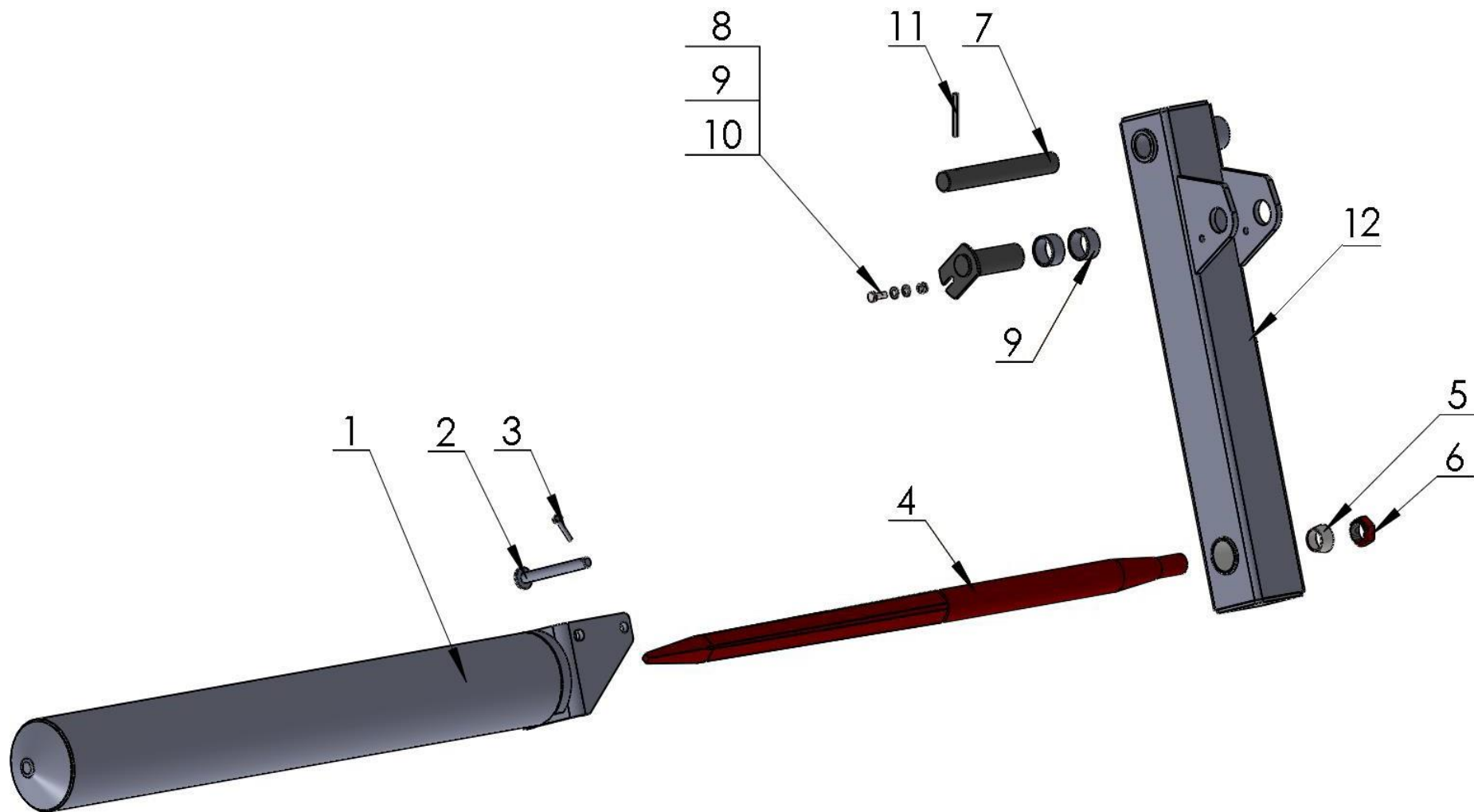
No.	Name	Fig. or index No.			
		OL.CH 3E	Volume	OL.CH 3	Volume
1	Grapple frame	OL.CH 3 01.00.00.3E	1	OL.CH 3 01.00.00	1
2	Clamping ring set	OL.CH 3 02.00.00.1	2	OL.CH 3 02.00.00.1	2
3	Clamping ring pin	OL.CH 3 00.00.03.2	2	OL.CH 3 00.00.03.2	2
4	Cylinder pin	OL.CH 3 00.00.04	2	OL.CH 3 00.00.04	2
5	Spring	POD-SPR-000005	4	POD-SPR-000005	4
6	Spring-type straight pin	23K8/50	6	23K8/50	6
7	Sleeve PAP 3030 P10	POD-LOZ-000021-1	12	POD-LOZ-000021-1	12
8	Hydraulic cylinder	POD-HSL-000028	1	POD-HSL-000028	1
9	Flexible hydraulic hose	24PAA/111/10 L-2000	2	24PAA/111/10 L-2000	2
10	Euro valve-plug M18 x 1.5	24ZWE13-M18X1.5	2	24ZWE13-M18X1.5	2
11	Plug valve adapter	24ZWNE13	2	24ZWNE13	2
12	Lubricating nipple M10 x 1.0 straight	23SM10/1	4	23SM10/1	4
13	Red protective cap	23KOC	4	23KOC	4

5. MULTI-FUNCTION BALE GRABBER

No.	Name	Fig. or index No.	
		OL.CHB	Volume
1	Main frame	OL.CHB 01.00.00.E	1
2	Left gripper beam	See p. 11	1
	Right gripper beam	See p. 11	1
3	Transport hitch	See p. 13	2
4	The hydraulic system	See p. 13	1
5	Wiring support	OL.CHB 01.00.14.1	1

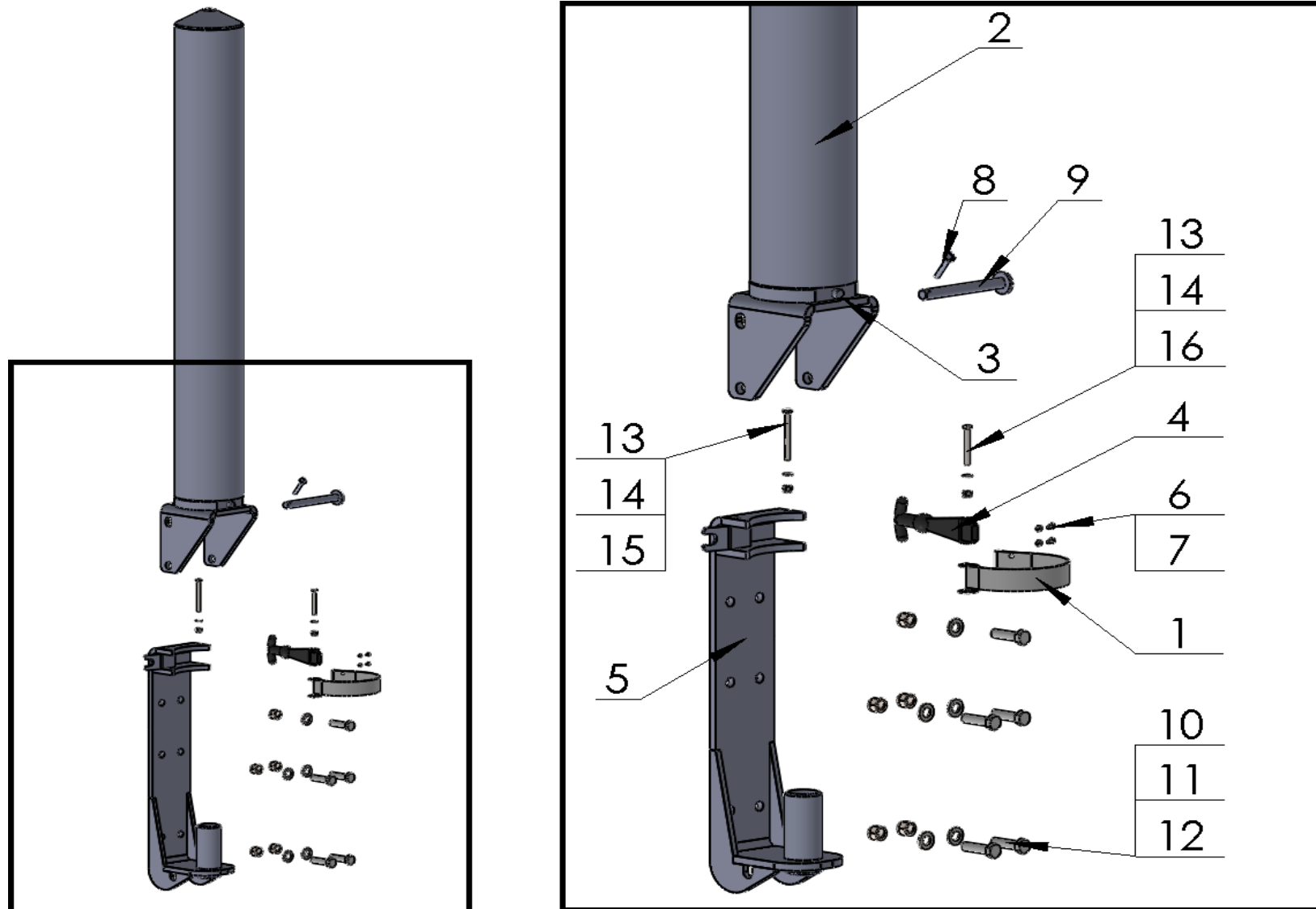


5.1. GRIPPER BEAM ASSEMBLY



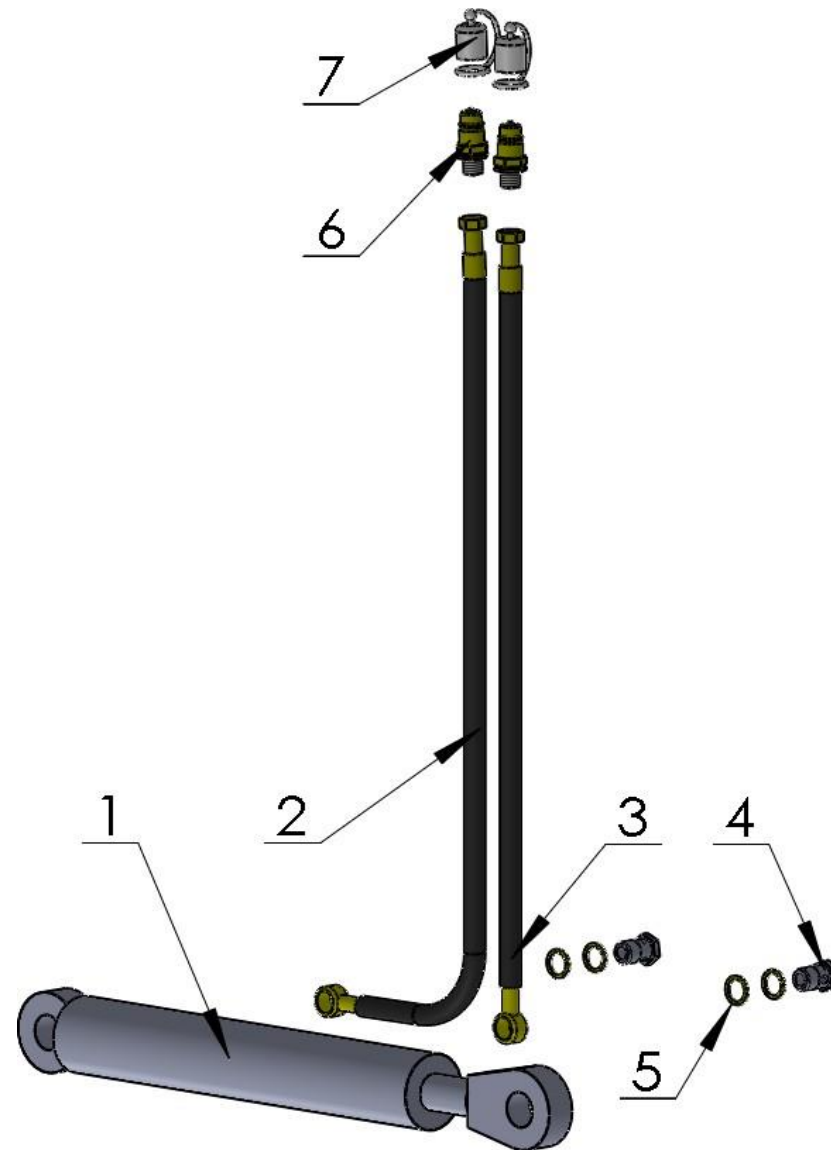
No.	Name	Fig. or index No.	
		OL.CHB	Volume
1	Gripper beam	OL.CHB 03.00.00	1
2	Beam pivot	OL.CHB 07.00.00	1
3	Cotter pin with a ring 4.5 mm	POD-ELZ-000444	1
4	Tooth of the multi-function gripper	OL.CHB 00.00.10	1
5	Conical retaining sleeve	OL.CHB 00.00.09	1
6	M28 x 1.5 nut	Included with item No. 4	1
7	Bar I	OL.CHB 00.00.04	1
8	Bolt 8 x 25 black 82105	23S8/25 8.8	1
9	Self-locking nut M8 galv. 82175 8	23NS8OC	1
10	Washer round 8 galv. 82005	23P8OOC	2
11	Spring pin 8 x 60 DIN 1481	POD-ELZ-000009-1	1
12	Arm I (left)	OL.CHB 02.01.00	1
12*	Arm II (right)	OL.CHB 02.02.00	1

5.2. GRIPPER BEAM WITH AN ADDITIONAL OL.CHB TRANSPORT SLING



No.	Name	Fig. or index No.	
		OL.CHB	Volume
1	Clamp	OL.CHB 00.00.11	1
2	Gripper beam	OL.CHB 03.00.00	1
3	Lubricating nipple M6 x 1.0 straight	23SM	1
4	Lever support	POD-TSZ-000129	1
5	Hitch body	OL.CHB 06.00.00.1	1
6	Bolt 4 x 12 galv. 8.8 82105	POD-ELZ-000520	2
7	Nut M4 galv. 82144 5	23N4OC	2
8	Cotter pin with a ring 4.5 mm	POD-ELZ-000444	1
9	Beam pivot	OL.CHB 07.00.00	1
10	Bolt 12 x 45 galv. 82105 10.9	POD-ELZ-000496	5
11	Round washer 12 galv. 82005	23P12OC	5
12	Self-locking nut M12 galv. 82175 8	23NS12OC	5
13	Bolt 6 x 65 galv. 82101	POD-ELZ-000447	1
14	Round washer 6 galv. 82005	23P6OOC	1
15	Self-locking nut M6 galv. 82175 8	23NS6OC	2
16	Bolt 6 x 50 galv. 82101 8.8	23S6/50OC	1

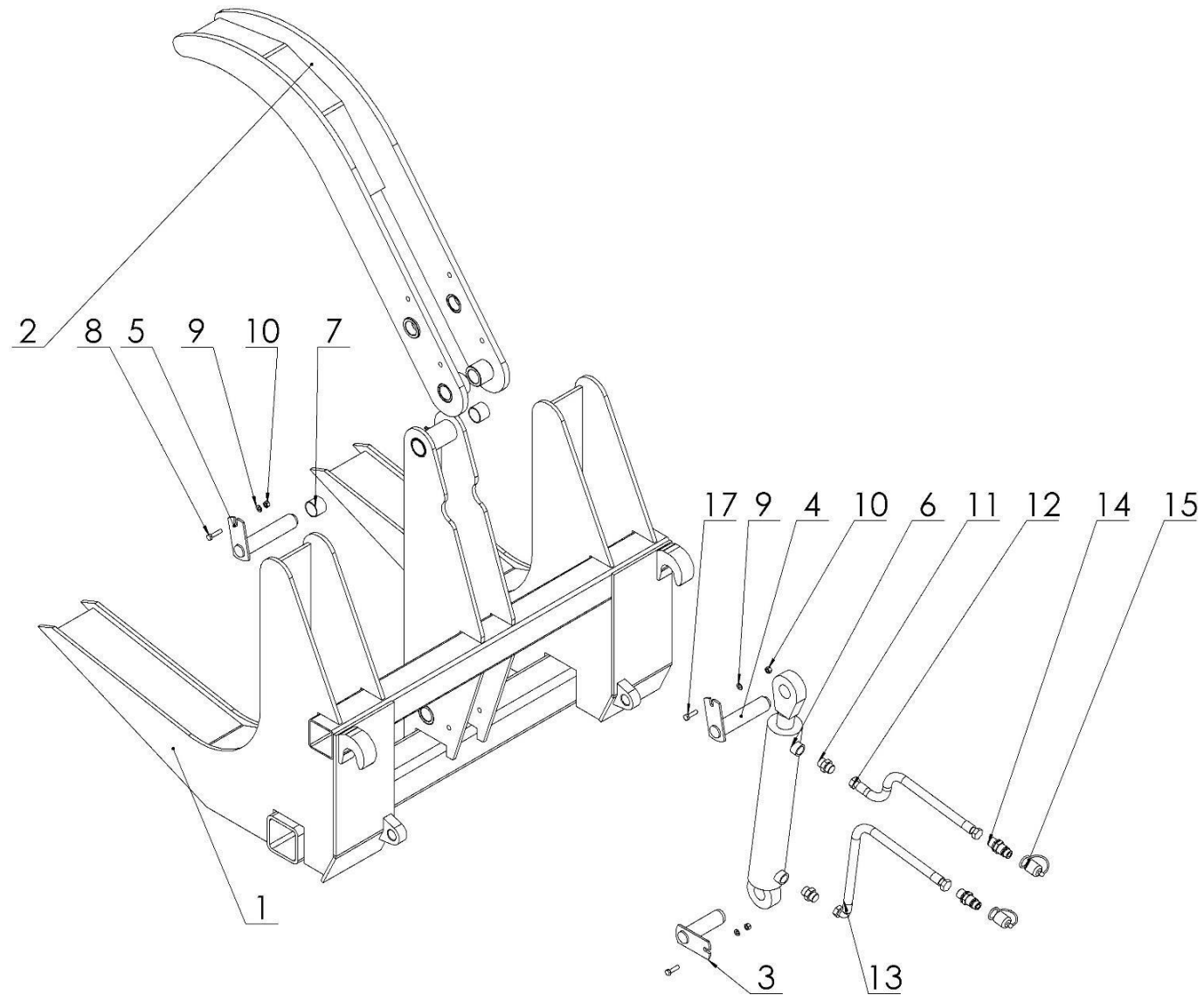
5.3. OL.CHB HYDRAULIC SYSTEM



No.	Name	Fig. or index No.	
		OL.CHB	Volume
1	Cylinder 63/36/320z	24SCJ2F63/36/320Z	1
2	Hydraulic hose I	RNMA/1_1/10 L=1600	1
3	Hydraulic hose II	RNMA/1_1/10 L=1900	1
4	Eye bolt M22 x 1.5 22 L38	POD-HPZ-000009-1	2
5	Copper washer diam. 22 x 28 x 1.5	24U22	4
6	Valve-plug EURO 13 M18 x 1.5	24ZWE13-M18X1.5	2
7	Cap for a EURO 13 valve-plug (green, yellow, blue, red)	24ZWNE13	2

*Hydraulic hoses (item 2, item 3) are included in the following sets: Set No. 63: multi-function bale grabber OLCHB E (index No.: POD-HPR-000491)

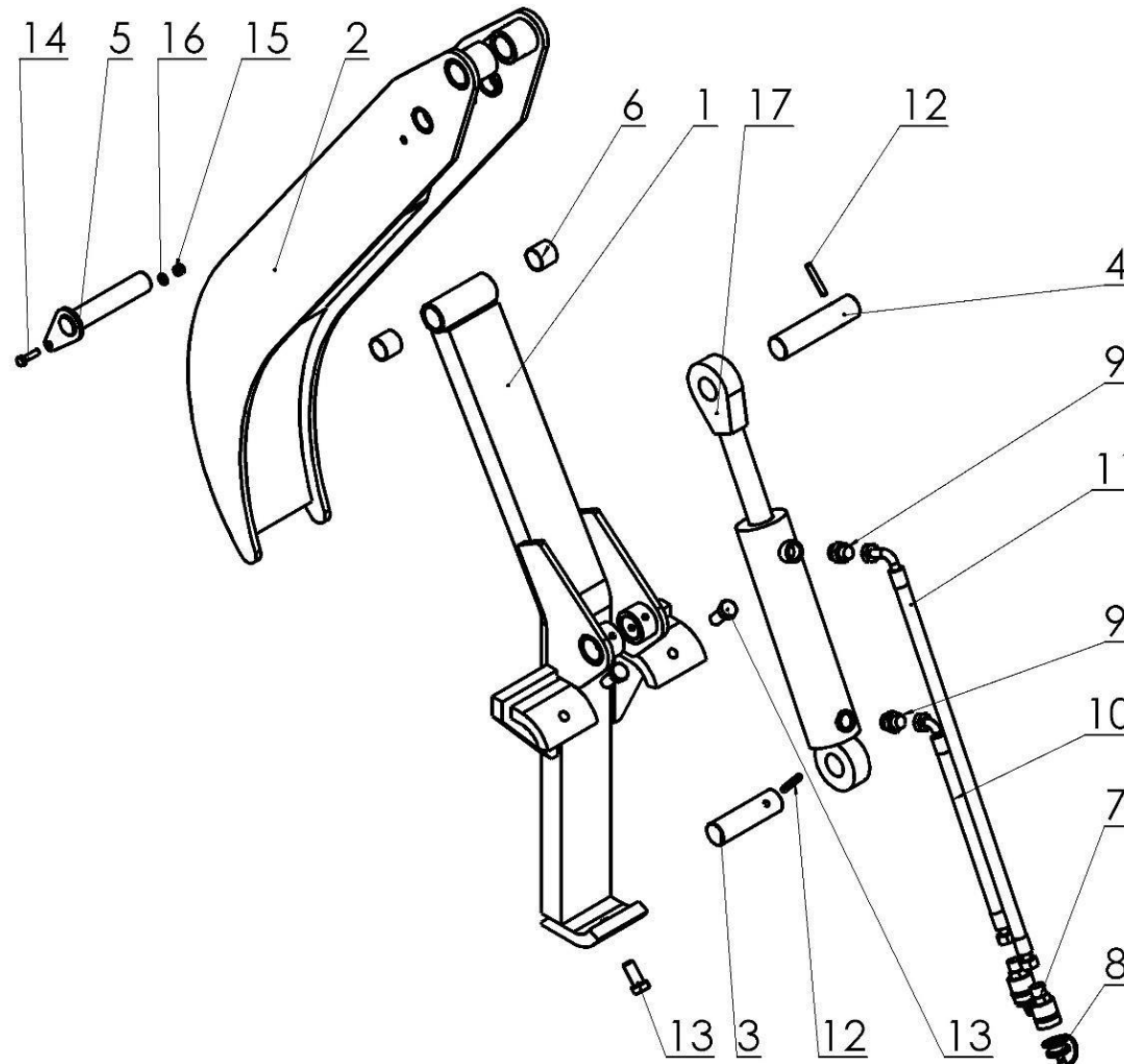
6. KRAB LOG GRIPPER



No.	Name	Fig. or index No.	
		OL.CK	Volume
1	Welded bottom frame, complete	OL.CK 01.00.00.1E	1
2	Clamping arm, complete	OL.CK 02.00.00	1
3	Pin I set	OL.CK 03.00.00.1	1
4	Pin II complete	OL.CK 04.00.00.1	1
5	Pin III complete	OL.CK 05.00.00.1	1
6	Cylinder UCJ81-70/40/275*L- 618	POD-HSL-000096	1
7	Sleeve PAP 3530 P20	POD-LOZ-000164	2
8	Bolt M8 x 35	23S8/35OC 8.8	1
9	Round washer 8.4	23P8OOC	3
10	Nut M8	23N8OC	3
11	Straight connector 22 x 22	24K22/22	2
12	Hydraulic hose I	AA-233-13 L=1500	1
13	Hydraulic hose II	A90A-233-13 L-1800	1
14	Valve-plug EURO 13 M18 x 1.5	24ZWE13-M18X1.5	2
15	Vale cap EURO plug 13 (green, yellow, blue, red)	24ZWNE13	2
16	Lubricating nipple M10 x 1.0 straight	23SM10/1	1
17	Bolt M8 x 30	23S8/30 8.8	2

*Hydraulic hoses (item 12, item 13) are included in the POD-HPR-000418 set No. 50 - log gripper.

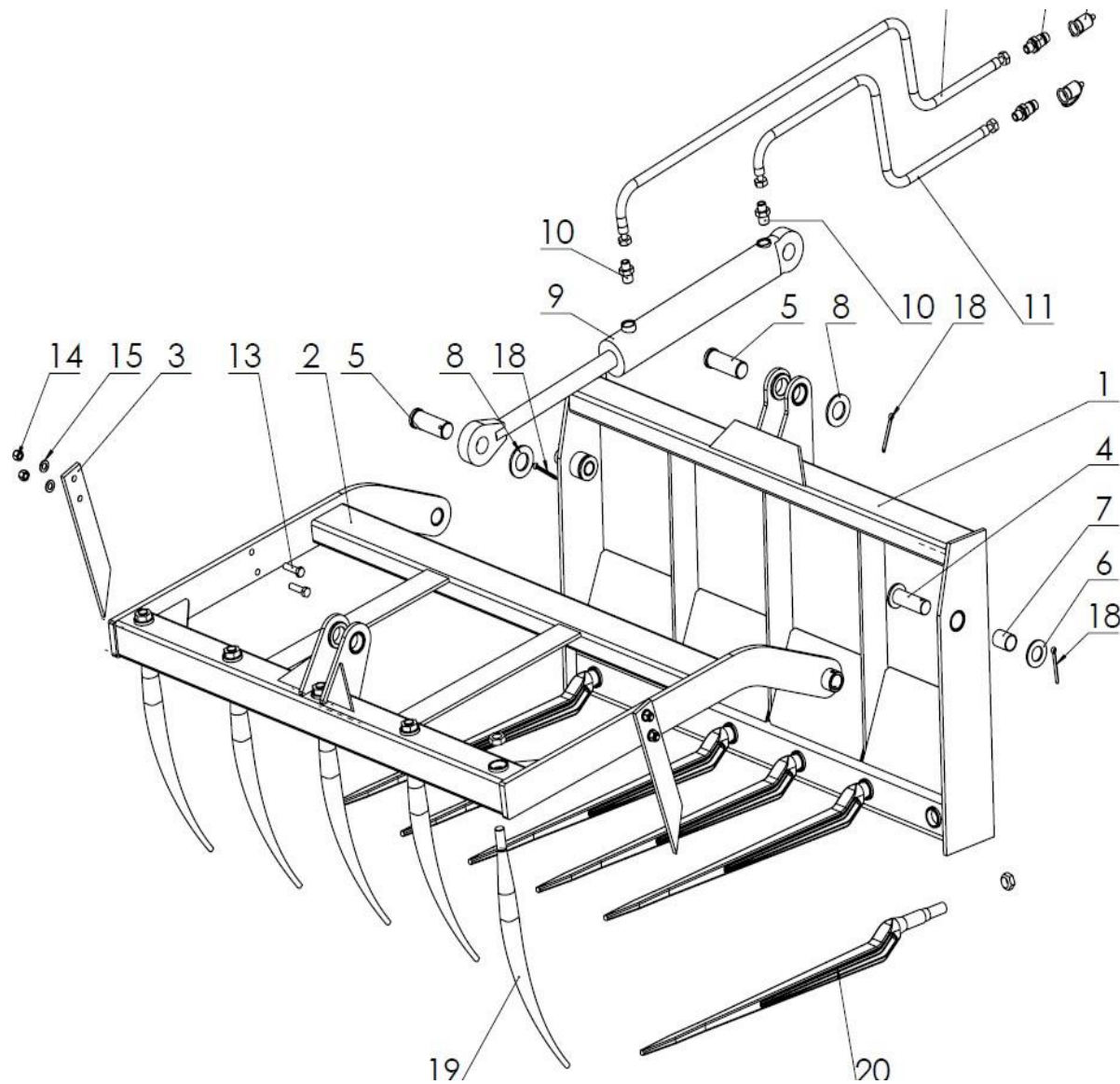
7. OL.CHK LOG GRIPPER SUSPENDED ON PALLET FORKS



No.	Name	Fig. or index No.	
		OL.CHK	Volume
1	Welded bottom arm, complete	OL.CHK 01.00.00	1
2	Mobile upper arm, complete	OL.CHK 02.00.00	1
3	Cylinder pin I	OL.CHK 00.00.03.1	1
4	Cylinder pin II	OL.CHK 00.00.04.1	1
5	Frame pin set	OL.CHK 05.00.00.1	1
6	Sleeve PAP 3030 P10	POD-LOZ-000021-1	2
7	Valve-plug EURO 13 M18 x 1.5	24ZWE13-M18X1.5	2
8	Vale cap EURO plug 13 (green, yellow, blue, red)	24ZWNE13	2
9	Straight connector 22 x 18-1.5	24KP22/18	2
10	Hydraulic hose I	A90A-211-10 L-2000	1
11	Hydraulic hose II	A90A-211-10 L-2250	1
12	Spring-type pin diam. 8 x 50	23K8/50	2
13	Bolt M16 x 35	23S16/35 8.8OC	3
14	Bolt M8 x 30	23S8/30OC 8.8	1
15	Self-locking nut M8	23NS8OC	1
16	Round washer 8.4	23P8OOC	1
17	Cylinder 63/36/180z CJ2E*L- 462	POD-HSL-000093	1

*Hydraulic hoses (item 10, item 11) are included in the POD-HPR-000398 set No. 44 - OL.CH K log gripper

8. SILAGE GRAPPLE (1-CYLINDER VERSION)



No.	Part or assembly name	Fig. or index No.			
		OL.KR 1.2	Volume	OL.KR 1.2 E	Volume
1	Welded frame	OL.KR 1.2 01.00.00	1	OL.KR 1.2 01.00.00.2E	1
2	Movable frame	OL.KR 1.2 02.00.00	1	OL.KR 1.2 02.00.00	1
3	Side pin	OL.KR 00.00.03	2	OL.KR 00.00.03	2
4	Frame pin set	OL.KR 00.04.00.1	2	OL.KR 00.04.00.1	2
5	Cylinder pin	OL.KR 00.00.05.1	2	OL.KR 00.00.05.1	2
6	Round washer 31	23P30OOC	2	23P30OOC	2
7	Self-lubricating sleeve	POD-LOZ-000115	2	POD-LOZ-000115	2
8	Round washer 36	23P36OOC	2	23P36OOC	2
9	Hydraulic cylinder	24SCJ2F63/36/320Z	1	24SCJ2F63/36/320Z	1
10	Straight connector	24KP22/18	2	24KP22/18	2
11	Flexible hydraulic hose	24PAA90/111/10 L-1500	1	24PA90A10-2000 10/13	1
12	Flexible hydraulic hose	24PA90A10-2000 10/13	1	24PAA90-10-2500	1
13	Bolt M12 x 45	23S12/45OC	4	23S12/45OC	4
14	Self-locking nut M12	23NS12OC	4	23NS12OC	4
15	Round washer 13	23P12OC	4	23P12OC	4
16	Euro valve-plug	24ZWE13-M18X1.5	2	24ZWE13-M18X1.5	2
17	Plug valve adapter	24ZWNE13	2	24ZWNE13	2
18	Cotter pin 6.3 x 63	23Z6/63	4	23Z6/63	4
19	Bent pin	25PW	5	25PW	5
20	Straight pin	25PWW880	6	25PWW880	6

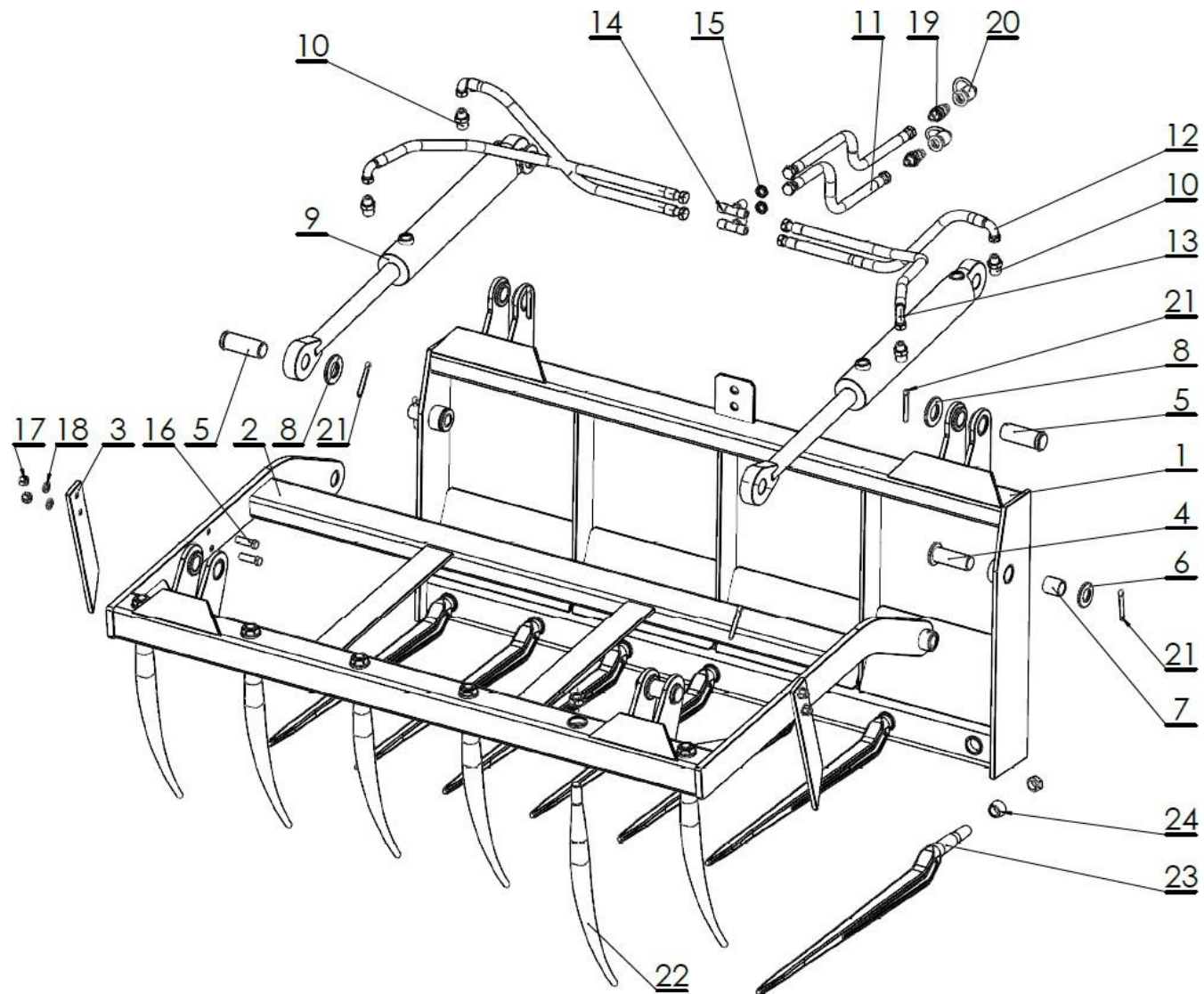
No.	Part or assembly name	Fig. or index No.			
		OL.KR 1.5	Volume	OL.KR 1.5 E	Volume
1	Welded frame	OL.KR 1.5 01.00.00	1	OL.KR 1.5 01.00.00.2E	1
2	Movable frame	OL.KR 1.5 02.00.00	1	OL.KR 1.5 02.00.00	1
3	Side pin	OL.KR 00.00.03	2	OL.KR 00.00.03	2
4	Frame pin set	OL.KR 00.04.00.1	2	OL.KR 00.04.00.1	2
5	Cylinder pin	OL.KR 00.00.05.1	2	OL.KR 00.00.05.1	2
6	Round washer 31	23P30OOC	2	23P30OOC	2
7	Self-lubricating sleeve	POD-LOZ-000115	2	POD-LOZ-000115	2
8	Round washer 36	23P36OOC	2	23P36OOC	2
9	Hydraulic cylinder	24SCJ2F63/36/320Z	1	24SCJ2F63/36/320Z	1
10	Straight connector	24KP22/18	2	24KP22/18	2
11	Flexible hydraulic hose	24PAA90/111/10 L-1500	1	24PA90A10-2000 10/13	1
12	Flexible hydraulic hose	24PA90A10-2000 10/13	1	24PAA90-10-2500	1
13	Bolt M12 x 45	23S12/45OC	4	23S12/45OC	4
14	Self-locking nut M12	23NS12OC	4	23NS12OC	4
15	Round washer 13	23P12OC	4	23P12OC	4
16	Euro valve-plug	24ZWE13-M18X1.5	2	24ZWE13-M18X1.5	2
17	Plug valve adapter	24ZWNE13	2	24ZWNE13	2
18	Cotter pin 6.3 x 63	23Z6/63	4	23Z6/63	4
19	Bent pin	25PW	6	25PW	6
20	Straight pin	25PWW880	7	25PWW880	7

No.	Part or assembly name	Fig. or index No.			
		OL.KR 1.8	Volume	OL.KR 1.8 E	Volume
1	Welded frame	OL.KR 1.8 01.00.00	1	OL.KR 1.8 01.00.00.2E	1
2	Movable frame	OL.KR 1.8 02.00.00	1	OL.KR 1.8 02.00.00	1
3	Side pin	OL.KR 00.00.03	2	OL.KR 00.00.03	2
4	Frame pin set	OL.KR 00.04.00.1	2	OL.KR 00.04.00.1	2
5	Cylinder pin	OL.KR 00.00.05.1	2	OL.KR 00.00.05.1	2
6	Round washer 31	23P30OOC	2	23P30OOC	2
7	Self-lubricating sleeve	POD-LOZ-000115	2	POD-LOZ-000115	2
8	Round washer 36	23P36OOC	2	23P36OOC	2
9	Hydraulic cylinder	24SCJ2F63/36/320Z	1	24SCJ2F63/36/320Z	1
10	Straight connector	24KP22/18	2	24KP22/18	2
11	Flexible hydraulic hose	24PAA90/111/10 L-1500	1	24PA90A10-2000 10/13	1
12	Flexible hydraulic hose	24PA90A10-2000 10/13	1	24PAA90-10-2500	1
13	Bolt M12 x 45	23S12/45OC	4	23S12/45OC	4
14	Self-locking nut M12	23NS12OC	4	23NS12OC	4
15	Round washer 13	23P12OC	4	23P12OC	4
16	Euro valve-plug	24ZWE13-M18X1.5	2	24ZWE13-M18X1.5	2
17	Plug valve adapter	24ZWNE13	2	24ZWNE13	2
18	Cotter pin 6.3 x 63	23Z6/63	4	23Z6/63	4
19	Bent pin	25PW	8	25PW	8
20	Straight pin	25PWW880	9	25PWW880	9

*Hydraulic hoses (item 11, item 12) are included in the POD-HPR-000155 set No. 9 - Silage grapple 1500

POD-HPR-000156 set No. 10: silage grapple EURO 1200, 1500 (1 cylinder)

9. SILAGE GRAPPLE (VERSION WITH 2 CYLINDERS)



No.	Part or assembly name	Fig. or index No.			
		OL.KR 2 1.2	Volume	OL.KR 2 1.2 E	Volume
1	Welded frame	OL.KR 2 1.2 01.00.00	1	OL.KR 2 1.2 01.00.00.2E	1
2	Movable frame	OL.KR 2 1.2 02.00.00	1	OL.KR 2 1.2 02.00.00	1
3	Side pin	OL.KR 00.00.03	2	OL.KR 00.00.03	2
4	Frame pin set	OL.KR 00.04.00.1	2	OL.KR 00.04.00.1	2
5	Cylinder pin	OL.KR 00.00.05.1	4	OL.KR 00.00.05.1	4
6	Round washer 31	23P30OOC	2	23P30OOC	2
7	Self-lubricating sleeve	POD-LOZ-000115	2	POD-LOZ-000115	2
8	Round washer 36	23P36OOC	4	23P36OOC	4
9	Hydraulic cylinder	24SCJ2F63/36/320Z	2	24SCJ2F63/36/320Z	2
10	Straight connector	24KP22/18	4	24KP22/18	4
11	Flexible hydraulic hose	24PAA10-1500 10/13	2	24PAA/111/10 L-2000	2
12	Flexible hydraulic hose	POD-HPR-000233	2	POD-HPR-000233	2
13	Flexible hydraulic hose	24PAA90/111/10-700	2	24PAA90/111/10-700	2
14	Bulkhead T-connector	24KZTG18/18/18	2	24KZTG18/18/18	2
15	Locknut	24P18/1.5	2	24P18/1.5	2
16	Bolt M12 x 45	23S12/45OC	4	23S12/45OC	4
17	Self-locking nut M12	23NS12OC	4	23NS12OC	4
18	Round washer 13	23P12OC	4	23P12OC	4
19	Euro valve-plug	24ZWE13-M18X1.5	2	24ZWE13-M18X1.5	2
20	Plug valve adapter	24ZWNE13	2	24ZWNE13	2

No.	Part or assembly name	Fig. or index No.			
		OL.KR 2 1.2	Volume	OL.KR 2 1.2 E	Volume
21	Cotter pin 6.3 x 63	23Z6/63	6	23Z6/63	6
22	Bent pin	25PW	5	25PW	5
23	Straight pin	25PWW880	6	25PWW880	6

No.	Part or assembly name	Fig. or index No.			
		OL.KR 2 1.5	Volume	OL.KR 2 1.5 E	Volume
1	Welded frame	OL.KR 2 1.5 01.00.00	1	OL.KR 2 1.5 01.00.00.2E	1
2	Movable frame	OL.KR 2 1.5 02.00.00	1	OL.KR 2 1.5 02.00.00	1
3	Side pin	OL.KR 00.00.03	2	OL.KR 00.00.03	2
4	Frame pin set	OL.KR 00.04.00.1	2	OL.KR 00.04.00.1	2
5	Cylinder pin	OL.KR 00.00.05.1	4	OL.KR 00.00.05.1	4
6	Round washer 31	23P30OOC	2	23P30OOC	2
7	Self-lubricating sleeve	POD-LOZ-000115	2	POD-LOZ-000115	2
8	Round washer 36	23P36OOC	4	23P36OOC	4
9	Hydraulic cylinder	24SCJ2F63/36/320Z	2	24SCJ2F63/36/320Z	2
10	Straight connector	24KP22/18	4	24KP22/18	4
11	Flexible hydraulic hose	24PAA10-1500 10/13	2	24PAA/111/10 L-2000	2
12	Flexible hydraulic hose	POD-HPR-000233	2	POD-HPR-000233	2
13	Flexible hydraulic hose	24PAA90/111/10-700	2	24PAA90/111/10-700	2
14	Bulkhead T-connector	24KZTG18/18/18	2	24KZTG18/18/18	2
15	Locknut	24P18/1.5	2	24P18/1.5	2
16	Bolt M12 x 45	23S12/45OC	4	23S12/45OC	4
17	Self-locking nut M12	23NS12OC	4	23NS12OC	4
18	Round washer 13	23P12OC	4	23P12OC	4
19	Euro valve-plug	24ZWE13-M18X1.5	2	24ZWE13-M18X1.5	2
20	Plug valve adapter	24ZWNE13	2	24ZWNE13	2

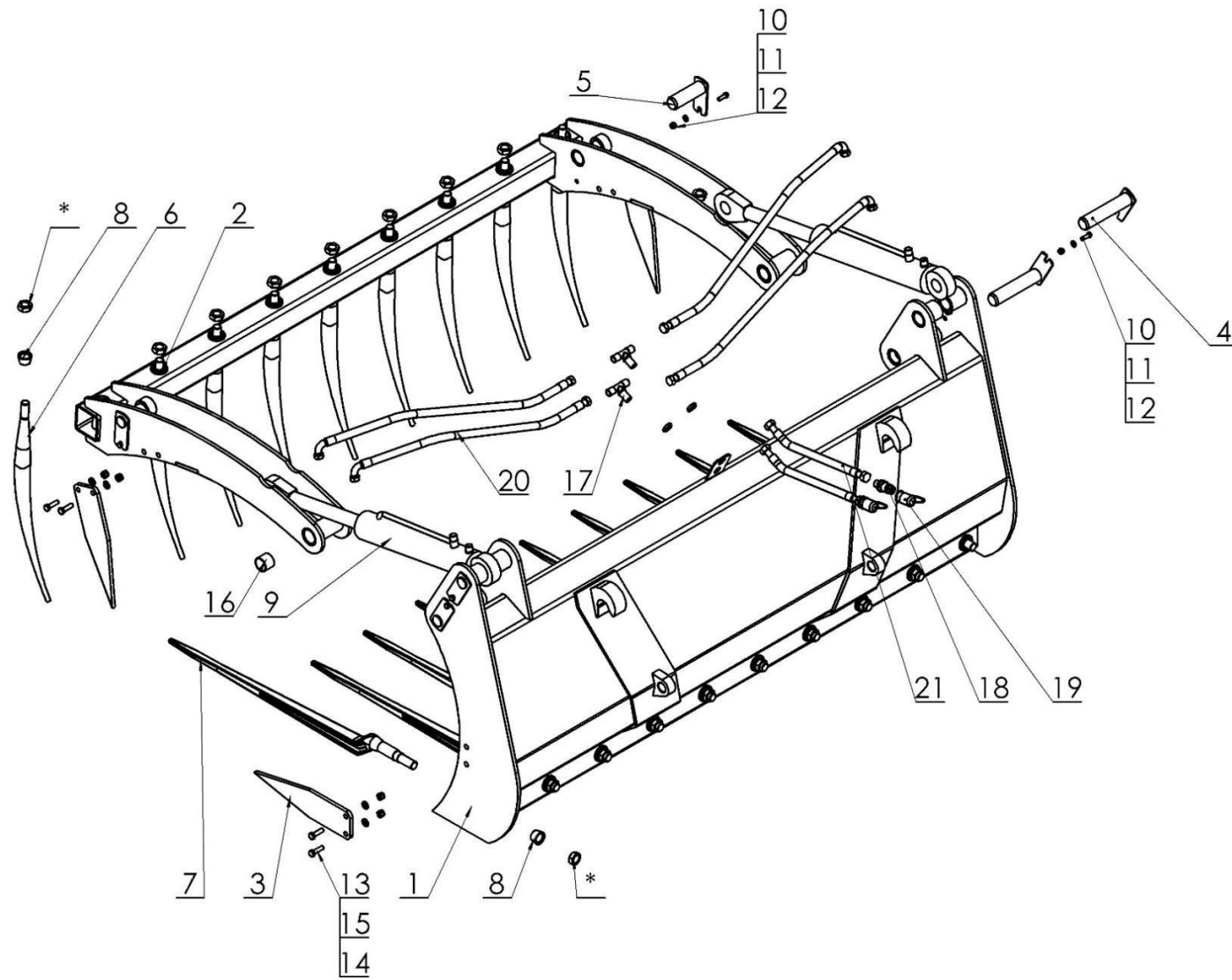
No.	Part or assembly name	Fig. or index No.			
		OL.KR 2 1.5	Volume	OL.KR 2 1.5 E	Volume
21	Cotter pin 6.3 x 63	23Z6/63	6	23Z6/63	6
22	Bent pin	25PW	6	25PW	6
23	Straight pin	25PWW880	7	25PWW880	7

No.	Part or assembly name	Fig. or index No.			
		OL.KR 2 1.8	Volume	OL.KR 2 1.8 E	Volume
1	Welded frame	OL.KR 2 1.8 01.00.00	1	OL.KR 2 1.8 01.00.00.2E	1
2	Movable frame	OL.KR 2 1.8 02.00.00	1	OL.KR 2 1.8 02.00.00	1
3	Side pin	OL.KR 00.00.03	2	OL.KR 00.00.03	2
4	Frame pin set	OL.KR 00.04.00.1	2	OL.KR 00.04.00.1	2
5	Cylinder pin	OL.KR 00.00.05.1	4	OL.KR 00.00.05.1	4
6	Round washer 31	23P30OOC	2	23P30OOC	2
7	Self-lubricating sleeve	POD-LOZ-000115	2	POD-LOZ-000115	2
8	Round washer 36	23P36OOC	4	23P36OOC	4
9	Hydraulic cylinder	24SCJ2F63/36/320Z	2	24SCJ2F63/36/320Z	2
10	Straight connector	24KP22/18	4	24KP22/18	4
11	Flexible hydraulic hose	24PAA10-1500 10/13	2	24PAA/111/10 L-2000	2
12	Flexible hydraulic hose	POD-HPR-000233	2	POD-HPR-000233	2
13	Flexible hydraulic hose	24PAA90/111/10-700	2	24PAA90/111/10-700	2
14	Bulkhead T-connector	24KZTG18/18/18	2	24KZTG18/18/18	2
15	Locknut	24P18/1.5	2	24P18/1.5	2
16	Bolt M12 x 45	23S12/45OC	4	23S12/45OC	4
17	Self-locking nut M12	23NS12OC	4	23NS12OC	4
18	Round washer 13	23P12OC	4	23P12OC	4
19	Euro valve-plug	24ZWE13-M18X1.5	2	24ZWE13-M18X1.5	2
20	Plug valve adapter	24ZWNE13	2	24ZWNE13	2

No.	Part or assembly name	Fig. or index No.			
		OL.KR 2 1.8	Volume	OL.KR 2 1.8 E	Volume
21	Cotter pin 6.3 x 63	23Z6/63	6	23Z6/63	6
22	Bent pin	25PW	8	25PW	8
23	Straight pin	25PWW880	9	25PWW880	9

*Hydraulic hoses (Items 11-13) are included in the POD-HPR-000234 set No. 25: silage grapple 1.2 – 2 cylinders
 POD-HPR-000162 set No. 12: Silage grapple EURO 1500 (2 cylinders)
 POD-HPR-000158 set no. 14: Silage grapple / bucket 1800 (2 cylinders) EURO

10. SILAGE GRAPPLE MODEL

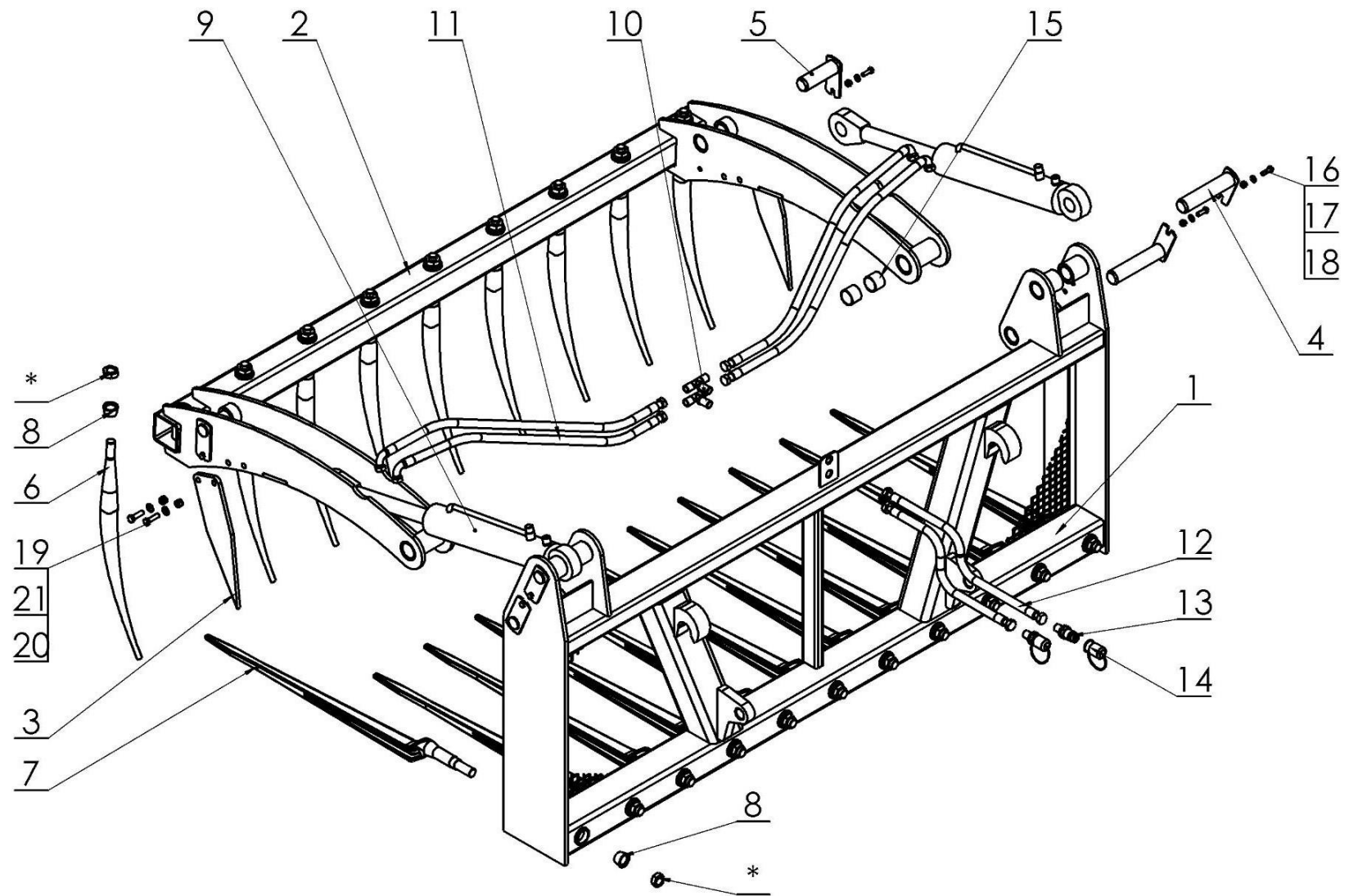


No.	Part or assembly name	Fig. or index No.					
		OL.KRQ 1.2E	Volume	OL.KRQ 1.5E	Volume	OL.KRQ 1.8E	Volume
1	Welded fixed frame	OL.KRQ 1.2 01.00.00.1E	1	OL.KRQ 1.5 01.00.00.1E	1	OL.KRQ 1.8 01.00.00.1E	1
2	Mobile top frame	OL.KRQ 1.2 02.00.00	1	OL.KRQ 1.5 02.00.00	1	OL.KRQ 1.8 02.00.00	1
3	Side pin	OL.KRQ 00.00.03	2	OL.KRQ 00.00.03	2	OL.KRQ 00.00.03	2
4	Pin I set	OL.KRQ 00.04.00.1	4	OL.KRQ 00.04.00.1	4	OL.KRQ 00.04.00.1	4
5	Pin II complete	OL.KRQ 00.05.00.1	2	OL.KRQ 00.05.00.1	2	OL.KRQ 00.05.00.1	2
6	Bent finger L600	25PW	6	25PW	7	25PW	9
7	Straight finger L880	25PWW880	7	25PWW880	9	25PWW880	10
8	Conical retaining sleeve	OL.KR 00.00.09	13	OL.KR 00.00.09	16	OL.KR 00.00.09	19
9	Cylinder 63/36/250	POD-HSL-000111	2	POD-HSL-000111	2	POD-HSL-000111	2
10	Bolt 8 x 25	23S8/25OC8.8	6	23S8/25OC8.8	6	23S8/25OC8.8	6
11	Round washer 8.4	23P8OOC	6	23P8OOC	6	23P8OOC	6
12	Self-locking nut M8	23NS8OC	6	23NS8OC	6	23NS8OC	6
13	Bolt M10 x 35	23S10/35OC 8.8	8	23S10/35OC 8.8	8	23S10/35OC 8.8	8
14	Round washer 10.5	23P10 82005	8	23P10 82005	8	23P10 82005	8
15	Self-locking nut M10	23NS10OC	8	23NS10OC	8	23NS10OC	8
16	Sleeve PAP 3530 P20	POD-LOZ-000164	4	POD-LOZ-000164	4	POD-LOZ-000164	4
17	Bulkhead T-connector 3XM18 x 15	24KZTG18/18/18	2	24KZTG18/18/18	2	24KZTG18/18/18	2
18	Euro valve-plug M18 x 1.5	24ZWE13-M18X1.5	2	24ZWE13-M18X1.5	2	24ZWE13-M18X1.5	2
19	Plug valve adapter	24ZWNE13	2	24ZWNE13	2	24ZWNE13	2

No.	Part or assembly name	Fig. or index No.					
		OL.KRQ 1.2E	Volume	OL.KRQ 1.5E	Volume	OL.KRQ 1.8E	Volume
20	Flexible hydraulic hose	A90A/111/10-600	4	A90A/111/10-750	4	A90A/111/10-900	4
21	Flexible hydraulic hose	AA/111/10-2000	2	AA/111/10-2000	2	AA/111/10-2000	2

*Hydraulic hoses (item 20, item 21) are included in the following sets: POD-HPR-000430 set No. 56: OŁ.KRQ grapple 1.2 m
 POD-HPR-000433 set No. 56-1: OŁ.KRQ grapple 1.5 m
 POD-HPR-000439 set No. 56-2: OŁ.KRQ grapple 1.8 m

11. SILAGE GRAPPLE MODEL Z

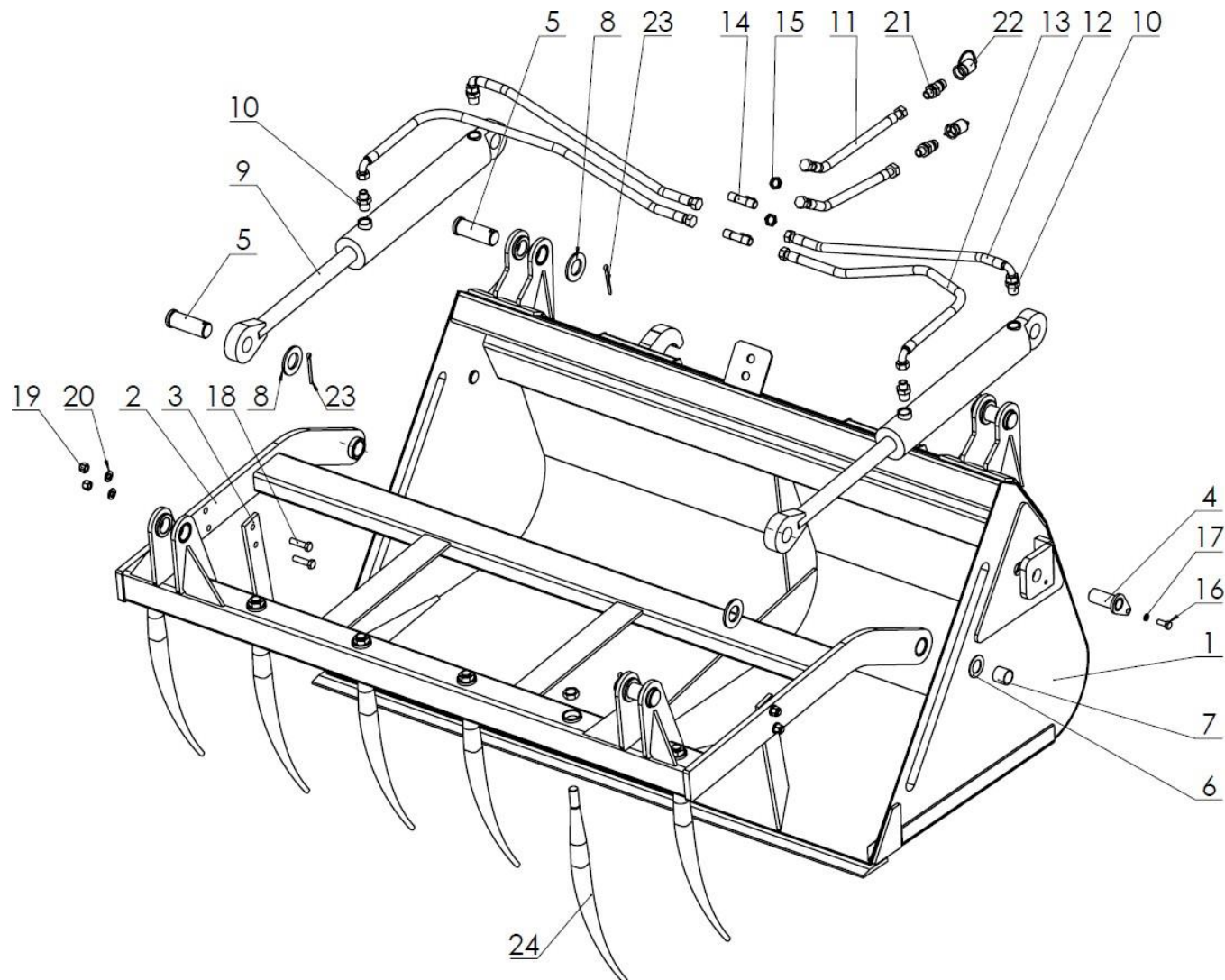


No.	Part or assembly name	Fig. or index No.					
		OL.KRZ 1.2E	Volume	OL.KRZ 1.5E	Volume	OL.KRZ 1.8E	Volume
1	Welded fixed frame	OL.KRZ 1.2 01.00.00.2E	1	OL.KRZ 1.5 01.00.00.2E	1	OL.KRZ 1.8 01.00.00.2E	1
2	Mobile top frame	OL.KRQ 1.2 02.00.00	1	OL.KRQ 1.5 02.00.00	1	OL.KRQ 1.8 02.00.00	1
3	Side pin	OL.KRQ 00.00.03	2	OL.KRQ 00.00.03	2	OL.KRQ 00.00.03	2
4	Pin I set	OL.KRQ 00.04.00.1	4	OL.KRQ 00.04.00.1	4	OL.KRQ 00.04.00.1	4
5	Pin II complete	OL.KRQ 00.05.00.1	2	OL.KRQ 00.05.00.1	2	OL.KRQ 00.05.00.1	2
6	Bent finger L600	25PW	6	25PW	7	25PW	9
7	Straight finger L880	25PWW880	7	25PWW880	9	25PWW880	11
8	Conical retaining sleeve	OL.KR 00.00.09	13	OL.KR 00.00.09	16	OL.KR 00.00.09	20
9	Cylinder 63/36/250	POD-HSL-000111	2	POD-HSL-000111	2	POD-HSL-000111	2
10	Bulkhead T-connector 3XM18 x 15	24KZTG18/18/18	2	24KZTG18/18/18	2	24KZTG18/18/18	2
11	Flexible hydraulic hose	A90A/111/10-600	4	A90A/111/10-750	4	A90A/111/10-900	4
12	Flexible hydraulic hose	AA/111/10-2000	2	AA/111/10-2000	2	AA/111/10-2000	2
13	Euro valve-plug M18 x 1.5	24ZWE13-M18X1.5	2	24ZWE13-M18X1.5	2	24ZWE13-M18X1.5	2
14	Plug valve adapter	24ZWNE13	2	24ZWNE13	2	24ZWNE13	2
15	Sleeve PAP 3530 P20	POD-LOZ-000164	4	POD-LOZ-000164	4	POD-LOZ-000164	4
16	Bolt 8 x 25	23S8/25OC8.8	6	23S8/25OC8.8	6	23S8/25OC8.8	6
17	Round washer 8.4	23P8OOC	6	23P8OOC	6	23P8OOC	6
18	Self-locking nut M8	23NS8OC	6	23NS8OC	6	23NS8OC	6
19	Bolt M10 x 35	23S10/35OC 8.8	4	23S10/35OC 8.8	4	23S10/35OC 8.8	4
20	Round washer 10.5	23P10 82005	4	23P10 82005	4	23P10 82005	4

No.	Part or assembly name	Fig. or index No.					
		OL.KRZ 1.2E	Volume	OL.KRZ 1.5E	Volume	OL.KRZ 1.8E	Volume
21	Self-locking nut M10	23NS10OC	4	23NS10OC	4	23NS10OC	4

*Hydraulic hoses (item 11, item 12) are included in the following sets: POD-HPR-000430 set No. 56: OŁ.KRQ grapple 1.2 m
 POD-HPR-000433 set No. 56-1: OŁ.KRQ grapple 1.5 m
 POD-HPR-000439 set No. 56-2: OŁ.KRQ grapple 1.8 m

12. GRAPPLE BUCKET



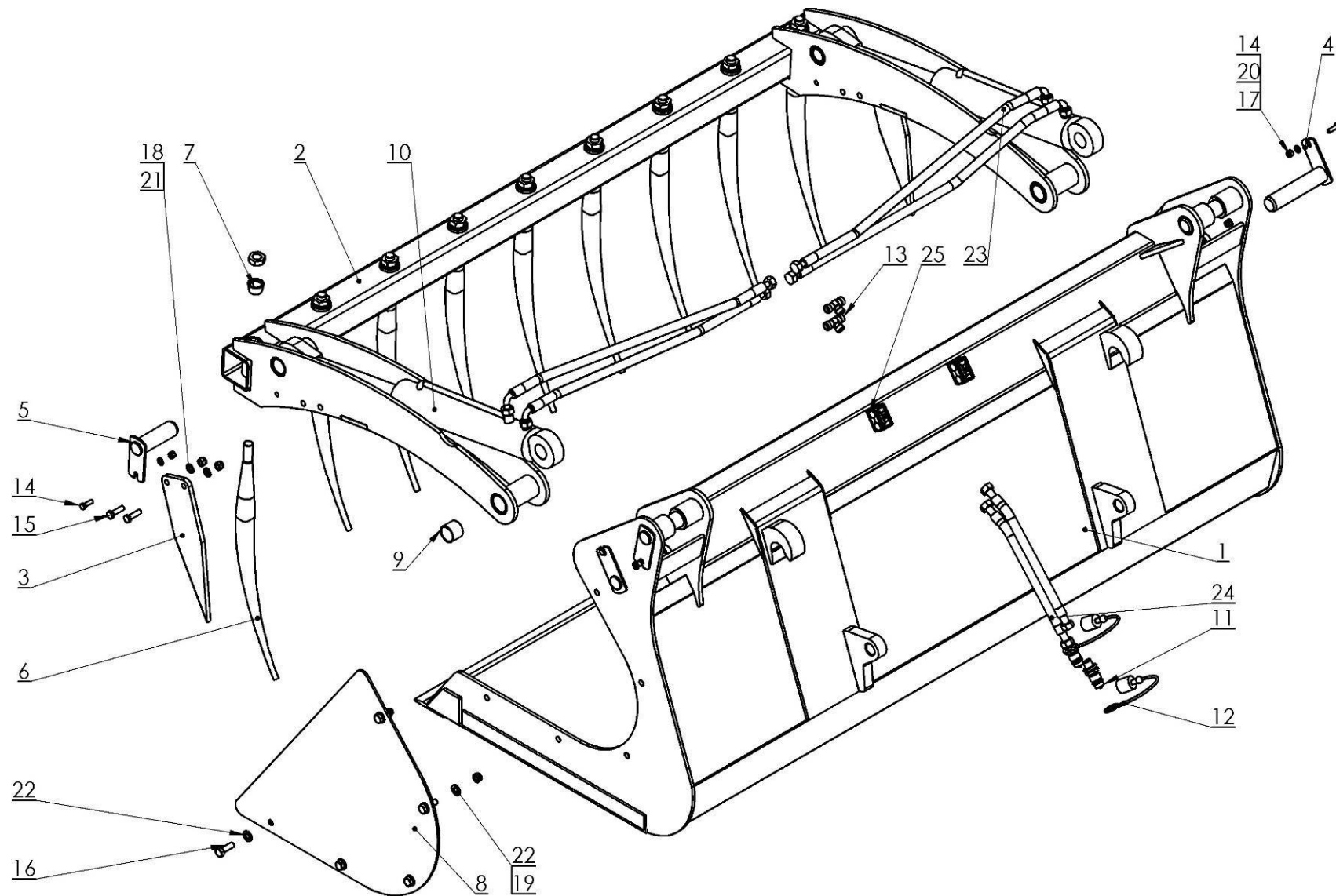
No.	Part or assembly name	Fig. or index No.							
		OL.LCH 1.5	Volume	OL.LCH 1.5 E	Volume	OL.LCH 1.8	Volume	OL.LCH 1.8E	Volume
1	Welded bucket	OL.LCH 1.5 01.00.00.1	1	OL.LCH 1.5 01.00.00.3E	1	OL.LCH 1.8 01.00.00.1	1	OL.LCH 1.8 01.00.00.3E	1
2	Movable frame	OL.LCH 1.5 02.00.00E	1	OL.LCH 1.5 02.00.00E	1	OL.LCH 1.8 02.00.00E	1	OL.LCH 1.8 02.00.00E	1
3	Side pin	OL.KR 00.00.03	2	OL.KR 00.00.03	2	OL.KR 00.00.03	2	OL.KR 00.00.03	2
4	Frame pin set	OL.LCh 00.05.00.1	2	OL.LCh 00.05.00.1	2	OL.LCh 00.05.00.1	2	OL.LCh 00.05.00.1	2
5	Cylinder pin	OL.KR 00.00.05.1	4	OL.KR 00.00.05.1	4	OL.KR 00.00.05.1	4	OL.KR 00.00.05.1	4
6	Special washer	OL.LCh 00.00.24	2	OL.LCh 00.00.24	2	OL.LCh 00.00.24	2	OL.LCh 00.00.24	2
7	Self-lubricating sleeve	POD-LOZ-000112	2	POD-LOZ- 000112	2	POD-LOZ- 000112	2	POD-LOZ- 000112	2
8	Round washer 37	23P36OOC	4	23P36OOC	4	23P36OOC	4	23P36OOC	4
9	Hydraulic cylinder	24SCJ2F63/36/320 Z	2	24SCJ2F63/36/ 320 Z	2	24SCJ2F63/36/ 320 Z	2	24SCJ2F63/36/ 320 Z	2
10	Straight connector	24KP22/18	4	24KP22/18	4	24KP22/18	4	24KP22/18	4
11	Flexible hydraulic hose	24PAA10-1500 10/13	2	24PAA/111/10 L- 2000	2	24PAA10-1500 10/13	2	24PAA/111/10 L- 2000	2
12	Flexible hydraulic hose	24PAA90/111/10- 700	2	24PAA90/111/1 0- 700	2	24PAA90/111/1 0 L- 800	2	24PAA90/111/ 10 L- 800	2
13	Flexible hydraulic hose	24PA90A10-1050	2	24PA90A10- 1050	2	24PAA90/111/1 0- L1100	2	24PAA90/111/ 10- L1100	2
14	Bulkhead T-connector	24KZTG18/18/18	2	24KZTG18/18/1 8	2	24KZTG18/18/ 18	2	24KZTG18/18/ 18	2
15	Locknut	24P18/1.5	2	24P18/1.5	2	24P18/1.5	2	24P18/1.5	2
16	Bolt M10 x 25	23S10/25OC 8.8	2	23S10/25OC 8.8	2	23S10/25OC 8.8	2	23S10/25OC 8.8	2
17	Round washer 10.5	23P10 82005	2	23P10 82005	2	23P10 82005	2	23P10 82005	2
18	Bolt M12 x 45	23S12/45OC	4	23S12/45OC	4	23S12/45OC	4	23S12/45OC	4
19	Self-locking nut M12	23NS12OC	4	23NS12OC	4	23NS12OC	4	23NS12OC	4

No.	Part or assembly name	Fig. or index No.							
		OL.LCH 1.5	Volume	OL.LCH 1.5 E	Volume	OL.LCH 1.8	Volume	OL.LCH 1.8E	Volume
20	Round washer 13	23P12OC	4	23P12OC	4	23P12OC	4	23P12OC	4
21	Euro valve-plug	24ZWE13-M18X1.5	2	24ZWE13-M18X1.5	2	24ZWE13-M18X1.5	2	24ZWE13-M18X1.5	2
22	Plug valve adapter	24ZWNE13	2	24ZWNE13	2	24ZWNE13	2	24ZWNE13	2
23	Cotter pin 6.3 x 63	23Z6/63	4	23Z6/63	4	23Z6/63	4	23Z6/63	4
24	Bent pin	25PW	6	25PW	6	25PW	8	25PW	8

*Hydraulic hoses (items 11-13) are included in the following sets:

POD-HPR-000162 set No. 12: Silage grapple EURO 1500 (2 cylinders)
 POD-HPR-000163 set No. 11: silage grapple 1500 standard (2 cylinders)
 POD-HPR-000158 set no. 14: Silage grapple / bucket 1800 EURO (2 cylinders)
 POD-HPR-000157 set no. 13: Silage grapple / bucket 1800 (2 cylinders)

13. GRAPPLE BUCKET MODEL "Q"

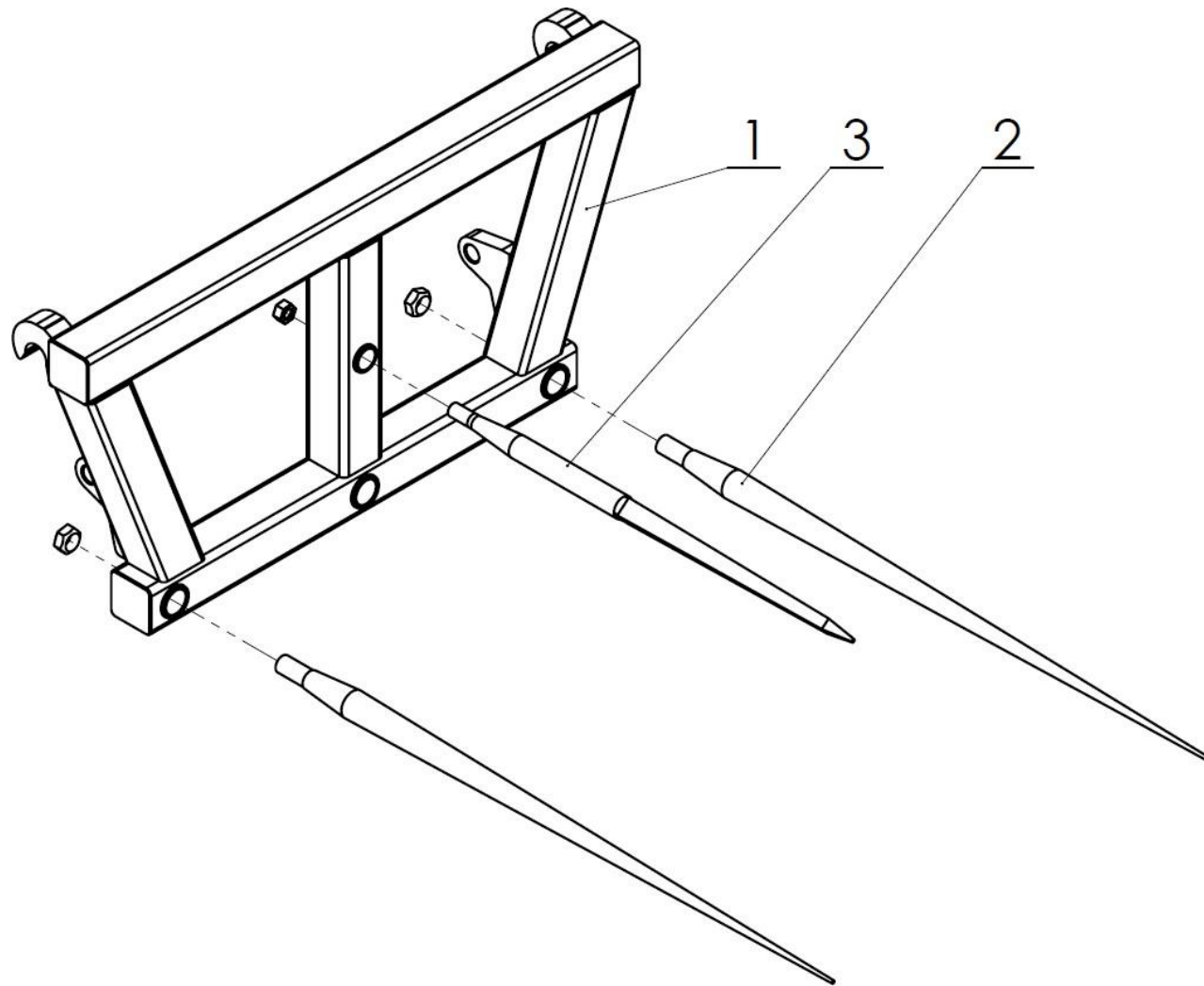


No.	Part or assembly name	Fig. or index No.							
		OL.LCHQ 1.5	Volume	OL.LCHQ 1.8	Volume	OL.LCHQ 2.0	Volume	OL.LCHQ 2.2	Volume
1	Welded fixed bucket	OL.LCHQ 1.5 01.00.00.1E	1	OL.LCHQ 1.8 01.00.00.1E	1	OL.LCHQ 2.0 01.00.00E	1	OL.LCHQ 2.2 01.00.00E	1
2	Mobile top frame	OL.KRQ 1.5 02.00.00	1	OL.KRQ 1.8 02.00.00	1	OL.KRQ 2.0 02.00.00	1	OL.KRQ 2.2 02.00.00	1
3	Side pin	OL.KRQ 00.00.03	2	OL.KRQ 00.00.03	2	OL.KRQ 00.00.03	2	OL.KRQ 00.00.03	2
4	Pin I set	OL.KRQ 00.04.00.1	4	OL.KRQ 00.04.00.1	4	OL.KRQ 00.04.00.1	4	OL.KRQ 00.04.00.1	4
5	Pin II complete	OL.KRQ 00.05.00.1	2	OL.KRQ 00.05.00.1	2	OL.KRQ 00.05.00.1	2	OL.KRQ 00.05.00.1	2
6	Bent finger L600	25PW	7	25PW	9	25PW	9	25PW	10
7	Conical retaining sleeve	OL.KR 00.00.09	7	OL.KR 00.00.09	9	OL.KR 00.00.09	9	OL.KR 00.00.09	10
8	Screw-mounted side panel	OL.LCHQ 00.00.10	2	OL.LCHQ 00.00.10	2	OL.LCHQ 00.00.10	2	OL.LCHQ 00.00.10	2
9	Sleeve PAP 3530 P20	POD-LOZ-000164	4	POD-LOZ- 000164	4	POD-LOZ- 000164	4	POD-LOZ- 000164	4
10	Cylinder 63/36/250	POD-HSL-000111	2	POD-HSL- 000111	2	POD-HSL- 000111	2	POD-HSL- 000111	2
11	Euro valve-plug M18 x 1.5	24ZWE13-M18X1.5	2	24ZWE13- M18X1.5	2	24ZWE13- M18X1.5	2	24ZWE13- M18X1.5	2
12	Plug valve adapter	24ZWNE13	2	24ZWNE13	2	24ZWNE13	2	24ZWNE13	2
13	T-connector 18 x 18 x 18 15 L	24KT18/18/18	2	24KT18/18/18	2	24KT18/18/18	2	24KT18/18/18	2
14	Bolt 8 x 25	23S8/25OC8.8	6	23S8/25OC8.8	6	23S8/25OC8.8	6	23S8/25OC8.8	6
15	Bolt M10 x 35	23S10/35OC 8.8	4	23S10/35OC 8.8	4	23S10/35OC 8.8	4	23S10/35OC 8.8	4
16	Bolt 12 x 35	23S12/35OC 8.8	10	23S12/35OC 8.8	10	23S12/35OC 8.8	10	23S12/35OC 8.8	10
17	Self-locking nut M8	23NS8OC	6	23NS8OC	6	23NS8OC	6	23NS8OC	6
18	Self-locking nut M10	23NS10OC	4	23NS10OC	4	23NS10OC	4	23NS10OC	4

No.	Part or assembly name	Fig. or index No.							
		OL.LCHQ 1.5	Volume	OL.LCHQ 1.8	Volume	OL.LCHQ 2.0	Volume	OL.LCHQ 2.2	Volume
19	Self-locking nut M12	23NS12OC	10	23NS12OC	10	23NS12OC	10	23NS12OC	10
20	Round washer 8.4	23P8OOC	6	23P8OOC	6	23P8OOC	6	23P8OOC	6
21	Round washer 10.5	23P10 82005	4	23P10 82005	4	23P10 82005	4	23P10 82005	4
22	Round washer 12.5	23P12OC	20	23P12OC	20	23P12OC	20	23P12OC	20
23	Flexible hydraulic hose	A90A/111/10-750	4	A90A/111/10-900	4	A90A/111/10-1000	4	A90A/111/10-1100	4
24	Flexible hydraulic hose	AA/111/10-2000	2	AA/111/10-2000	2	AA/111/10-2000	2	AA/111/10-2000	2
25	Handle HBK diam. 18 x 2 – double	POD-HPZ-000005-1	2	POD-HPZ-000005-1	2	POD-HPZ-000005-1	4	POD-HPZ-000005-1	4

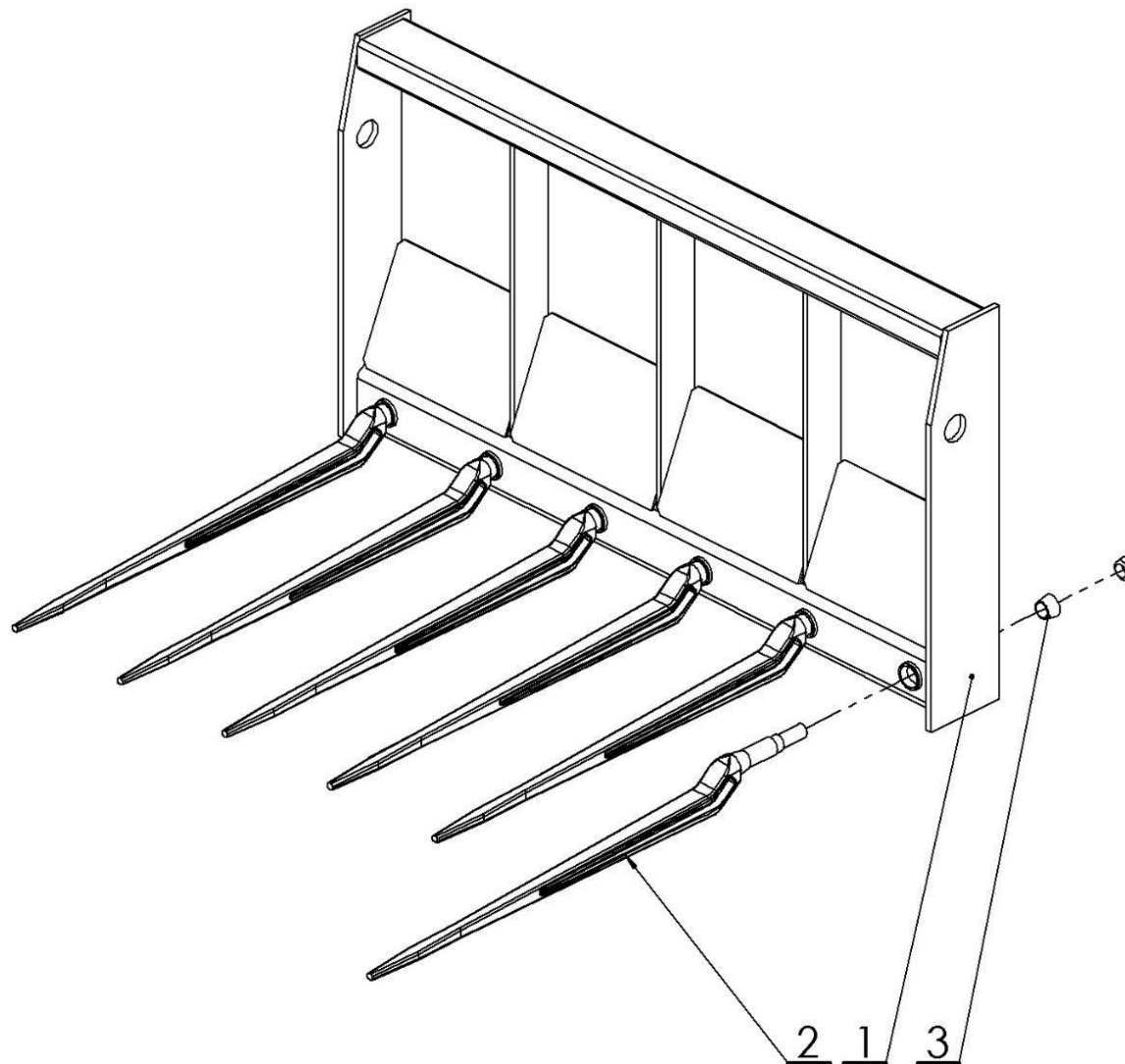
*Hydraulic hoses (item 23, item 24) are included in the following sets: POD-HPR-000433 set No. 56-1: OŁ.KRQ grapple 1.5 m
 POD-HPR-000439 set No. 56-2: OŁ.KRQ grapple 1.8 m
 POD-HPR-000645 set No. 56-3: OL.KRQ grapple 2.0 m
 POD-HPR-000646 set No. 56-4: OL.KRQ grapple 2.2 m

14. BALE FORKS (STANDARD VERSION)



No.	Name	Fig. or index No.			
		OL.WB	Volume	OL.WBE	Volume
1	Fork frame	OL.WB 01.00.00	1	OL.WB 01.00.00.2E	1
2	Straight pin L = 1100	POD-ODL-000003-1	2	POD-ODL-000003-1	2
3	Straight pin L = 800	POD-ODL-000002-1	1	POD-ODL-000002-1	1

15. MANURE AND HAY FORKS

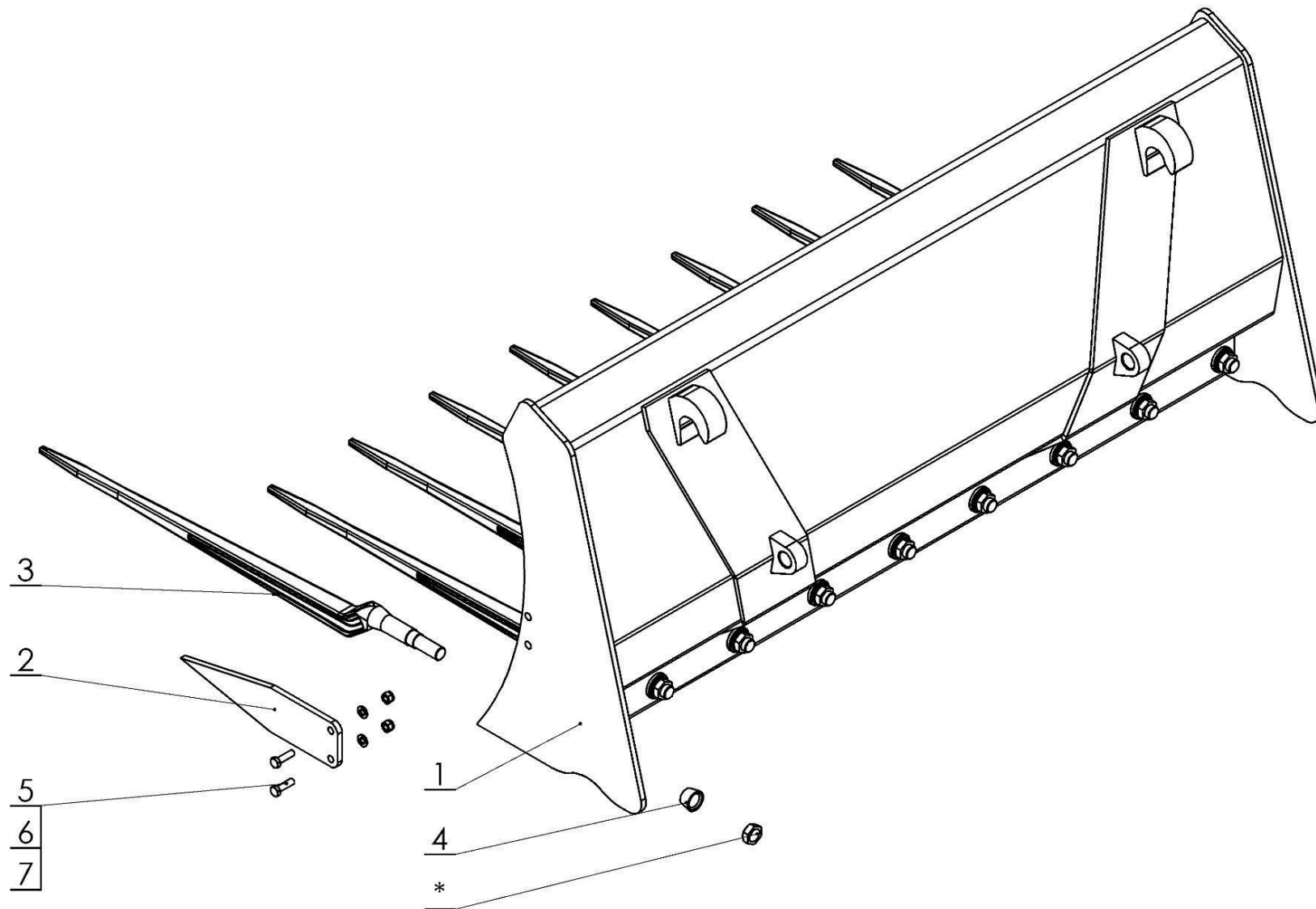


No.	Part or assembly name	Fig. or index No.			
		OL.WO 1.2	Volume	OL.WO 1.2 E	Volume
1	Welded frame	OL.WO 1.2 01.00.00	1	OL.WO 1.2 01.00.00.2E	1
2	Movable frame	OL.KR 00.00.09	1	OL.KR 00.00.09	1
3	Side pin	25PWW880	6	25PWW880	6

No.	Part or assembly name	Fig. or index No.			
		OL.WO 1.5	Volume	OL.WO 1.5 E	Volume
1	Welded frame	OL.WO 1.5 01.00.00	1	OL.WO 1.5 01.00.00.2E	1
2	Movable frame	OL.KR 00.00.09	1	OL.KR 00.00.09	1
3	Side pin	25PWW880	7	25PWW880	7

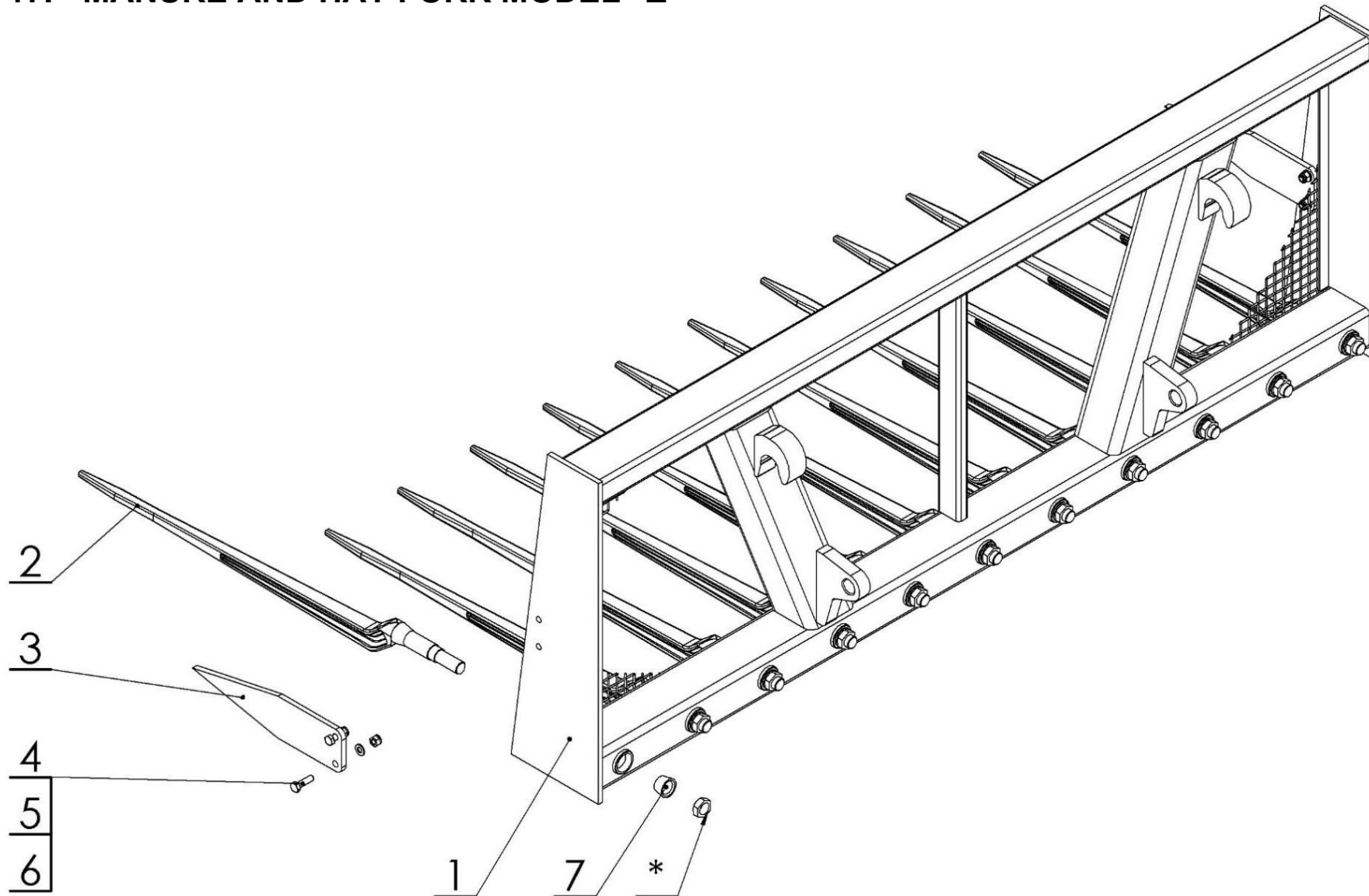
No.	Part or assembly name	Fig. or index No.			
		OL.WO 1.8	Volume	OL.WO 1.8 E	Volume
1	Welded frame	OL.WO 1.8 01.00.00	1	OL.WO 1.8 01.00.00.2E	1
2	Movable frame	OL.KR 00.00.09	1	OL.KR 00.00.09	1
3	Side pin	25PWW880	9	25PWW880	9

16. MANURE AND HAY FORK MODEL "Q"



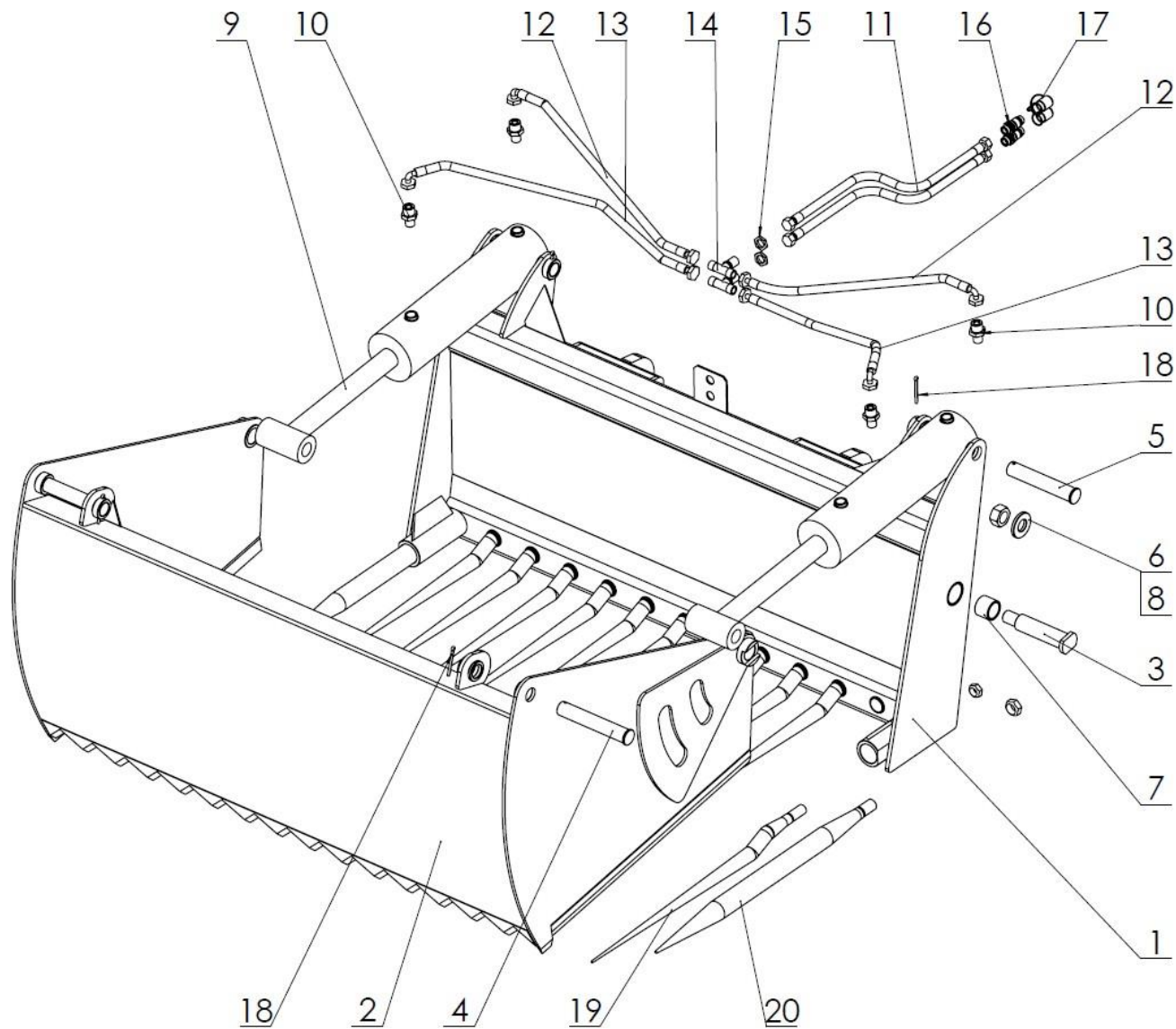
No.	Part or assembly name	Fig. or index No.					
		OL.WOQ 1.2 E	Volume	OL.WOQ 1.5 E	Volume	OL.WOQ 1.8 E	Volume
1	Bottom frame, complete	OL.WOQ 1.2 01.00.00E	1	OL.WOQ 1.5 01.00.00E	1	OL.WOQ 1.8 01.00.00E	1
2	Side pin	OL.KRQ 00.00.03	2	OL.KRQ 00.00.03	2	OL.KRQ 00.00.03	2
3	Straight finger L880	25PWW880	7	25PWW880	9	25PWW880	10
4	Conical retaining sleeve	OL.KR 00.00.09	7	OL.KR 00.00.09	9	OL.KR 00.00.09	10
5	Bolt 10 x 35	23S10/35OC 8.8	4	23S10/35OC 8.8	4	23S10/35OC 8.8	4
6	Round washer 10	23P10 82005	4	23P10 82005	4	23P10 82005	4
7	Self-locking nut M10	23NS10OC	4	23NS10OC	4	23NS10OC	4

17. MANURE AND HAY FORK MODEL "Z"



No.	Name	Fig. or index No.			
		OL.WOQ 1.5E	Volume	OL.WOQ 1.8E	Volume
1	Bottom frame, complete	OL.WOZ 1.5 01.00.00.2E	1	OL.WOZ 1.8 01.00.00.2E	1
2	Straight finger L880	25PWW880	9	25PWW880	11
3	Side pin	OL.KRQ 00.00.03	2	OL.KRQ 00.00.03	2
4	Bolt 10 x 35	23S10/35OC 8.8	4	23S10/35OC 8.8	4
5	Round washer 10	23P10 82005	4	23P10 82005	4
6	Self-locking nut M10	23NS10OC	4	23NS10OC	4
7	Conical retaining sleeve	OL.KR 00.00.09	9	OL.KR 00.00.09	11

18. SILAGE CUTTER



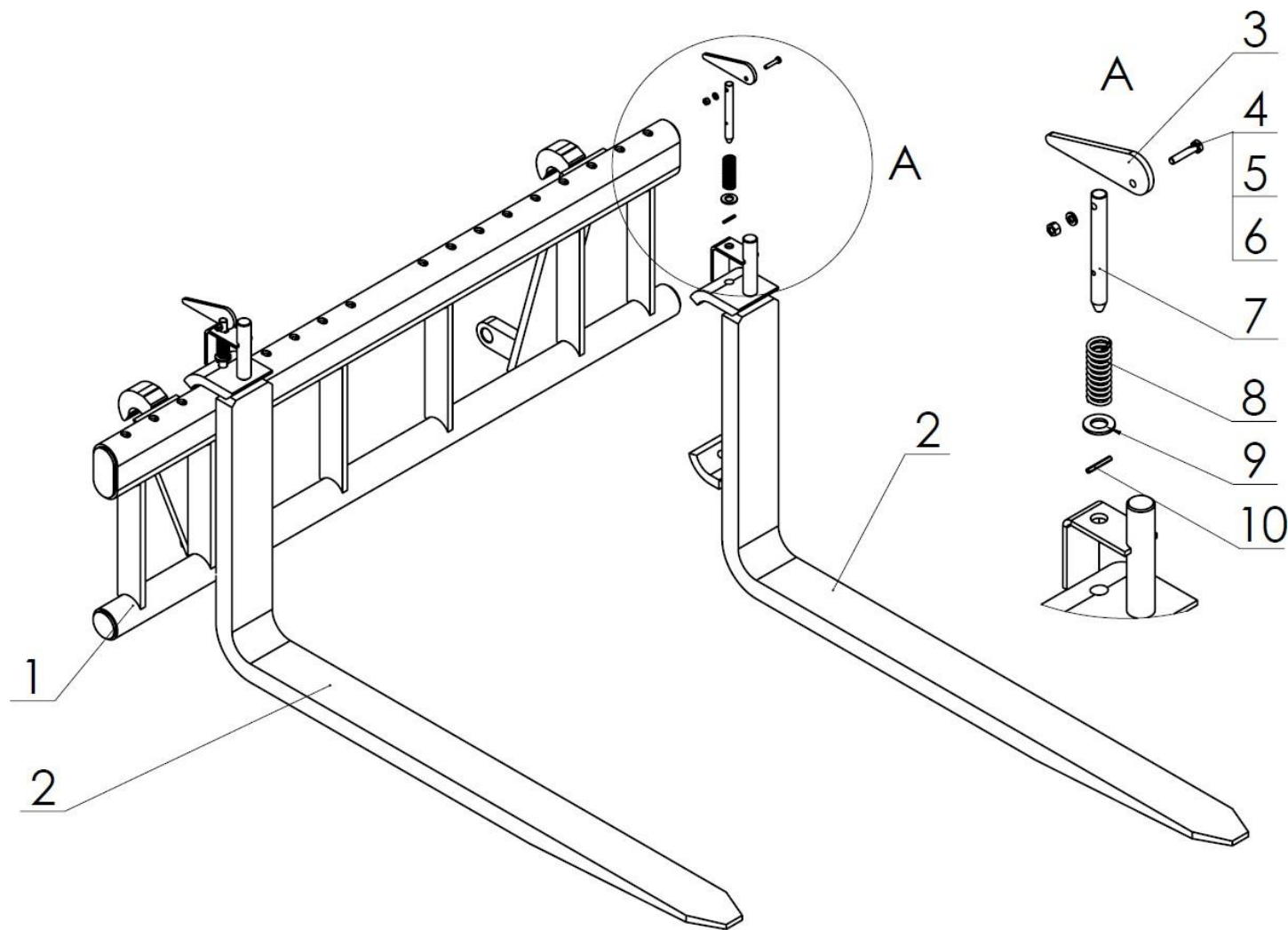
No.	Part or assembly name	Fig. or index No.							
		OL.WK 1.2	Volume	OL.WK 1.2 E	Volume	OL.WK 1.5	Volume	OL.WK 1.5 E	Volume
1	Fixed frame	OL.WK 1.2 01.00.00	1	OL.WK 1.2 01.00.00.2E	1	OL.WK 1.5 01.00.00	1	OL.WK 1.5 01.00.00.2E	1
2	Movable frame	OL.WK 1.2 02.00.00.1	1	OL.WK 1.2 02.00.00.1	1	OL.WK 1.5 02.00.00.1	1	OL.WK 1.5 02.00.00.1	1
3	Frame pin	OL.WK 1.2 00.00.03.2	2	OL.WK 1.2 00.00.03.3E	2	OL.WK 00.00.03.2	2	OL.WK 00.00.03.2	2
4	Cylinder pin I	OL.WK 1.2 00.00.04.2	2	OL.WK 1.2 00.00.04.2	2	OL.WK 00.00.04	2	OL.WK 00.00.04	2
5	Cylinder pin II	OL.WK 1.2 00.00.05.1	2	OL.WK 1.2 00.00.05.1	2	OL.WK 00.00.05.1	2	OL.WK 00.00.05.1	2
6	Washer	OL.WK 00.00.06	2	OL.WK 00.00.06	2	OL.WK 00.00.06	2	OL.WK 00.00.06	2
7	Self-lubricating sleeve	25T40/50/40	4	25T40/50/40	4	25T40/50/40	4	25T40/50/40	4
8	Self-locking nut M30	POD-ELZ-000042- 1	2	POD-ELZ- 000042- 1	2	POD-ELZ- 000042- 1	2	POD-ELZ- 000042- 1	2
9	Hydraulic cylinder	POD-HSL-000064	2	POD-HSL- 000064	2	24SCJ-S43- 110/50/350	2	24SCJ-S43- 110/50/350	2
10	Straight connector	POD-HKR-000084	4	POD-HKR- 000084	4	POD-HKR- 000084	4	POD-HKR- 000084	4
11	Flexible hydraulic hose	POD-HPR-000152	2	POD-HPR- 000356	2	POD-HPR- 000152	2	POD-HPR- 000356	2
12	Flexible hydraulic hose	POD-HPR-000376	2	POD-HPR- 000376	2	POD-HPR- 000125	2	POD-HPR- 000125	2
13	Flexible hydraulic hose	POD-HPR-000355	2	POD-HPR- 000355	2	POD-HPR- 000151	2	POD-HPR- 000151	2
14	Bulkhead T-connector	24KT22/22/22	2	24KT22/22/ 22	2	24KT22/22/22	2	24KT22/22/22	2
15	Locknut	24P22/1.5	2	24P22/1.5	2	24P22/1.5	2	24P22/1.5	2
16	Euro valve-plug	24ZWE13	2	24ZWE13	2	24ZWE13	2	24ZWE13	2

No.	Part or assembly name	Fig. or index No.							
		OL.WK 1.2	Volume	OL.WK 1.2 E	Volume	OL.WK 1.5	Volume	OL.WK 1.5 E	Volume
17	Plug valve adapter	24ZWNE13	2	24ZWNE13	2	24ZWNE13	2	24ZWNE13	2
18	Cotter pin	23Z6/63	4	23Z6/63	4	23Z6/63	4	23Z6/63	4
19	Straight pin	POD-ODL-000001-1	7	POD-ODL-000001-1	7	POD-ODL-000001-1	11	POD-ODL-000001-1	11
20	Heavy-gauge straight pin	25PWW820	2	25PWW820	2	25PWW820	2	25PWW820	2

*Hydraulic hoses (items 11-13) are included in the following sets:

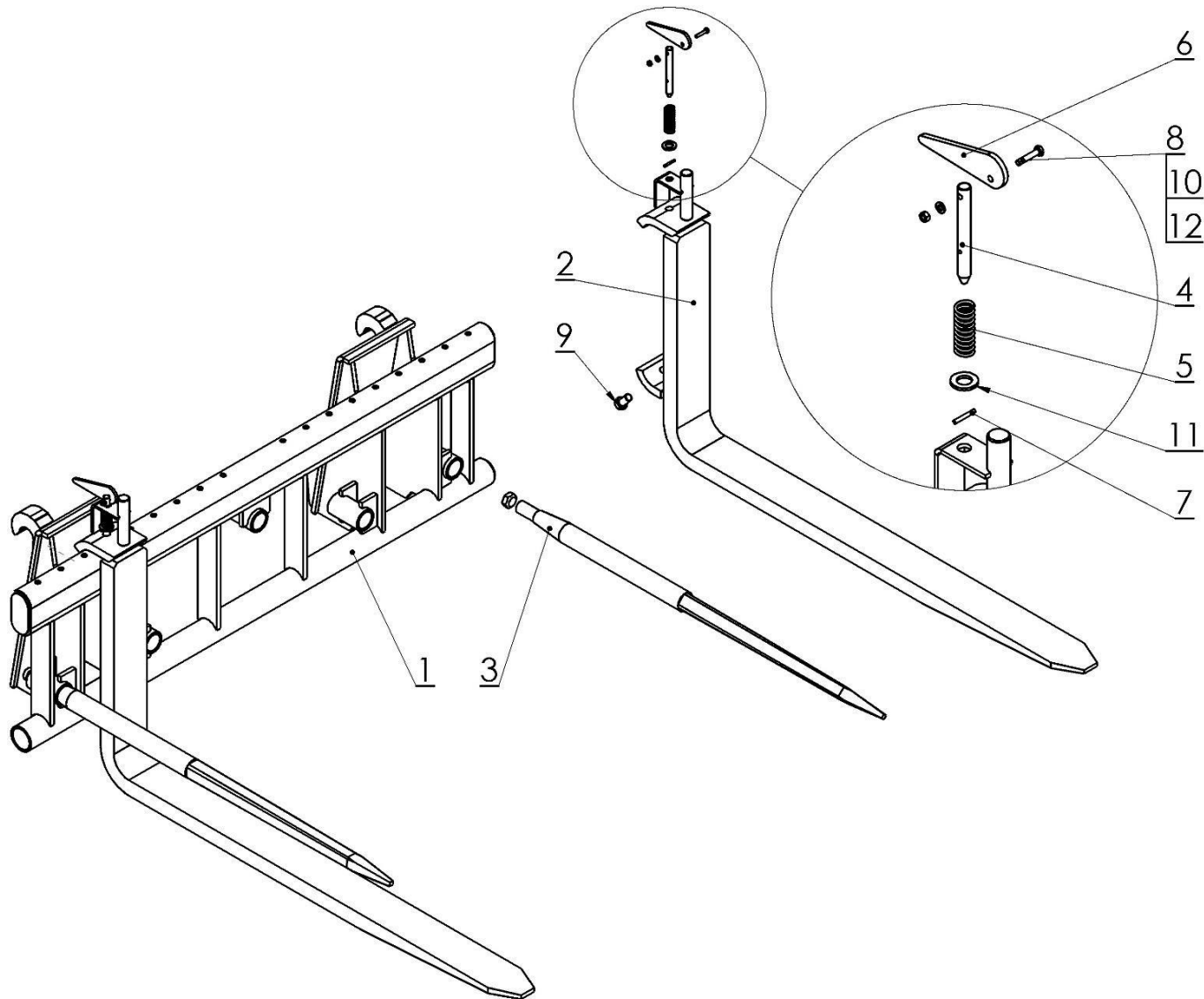
POD-HPR-000293 set No. 37: Silage cutter 1.2 (standard)
 POD-HPR-000294 set No. 38: Silage cutter 1.2 (euro)
 POD-HPR-000291 set No. 35: Silage cutter 1.5 (standard)
 POD-HPR-000292 set No. 36: Silage cutter 1.5 (euro)

19. PALLET SHUTTLE FORK



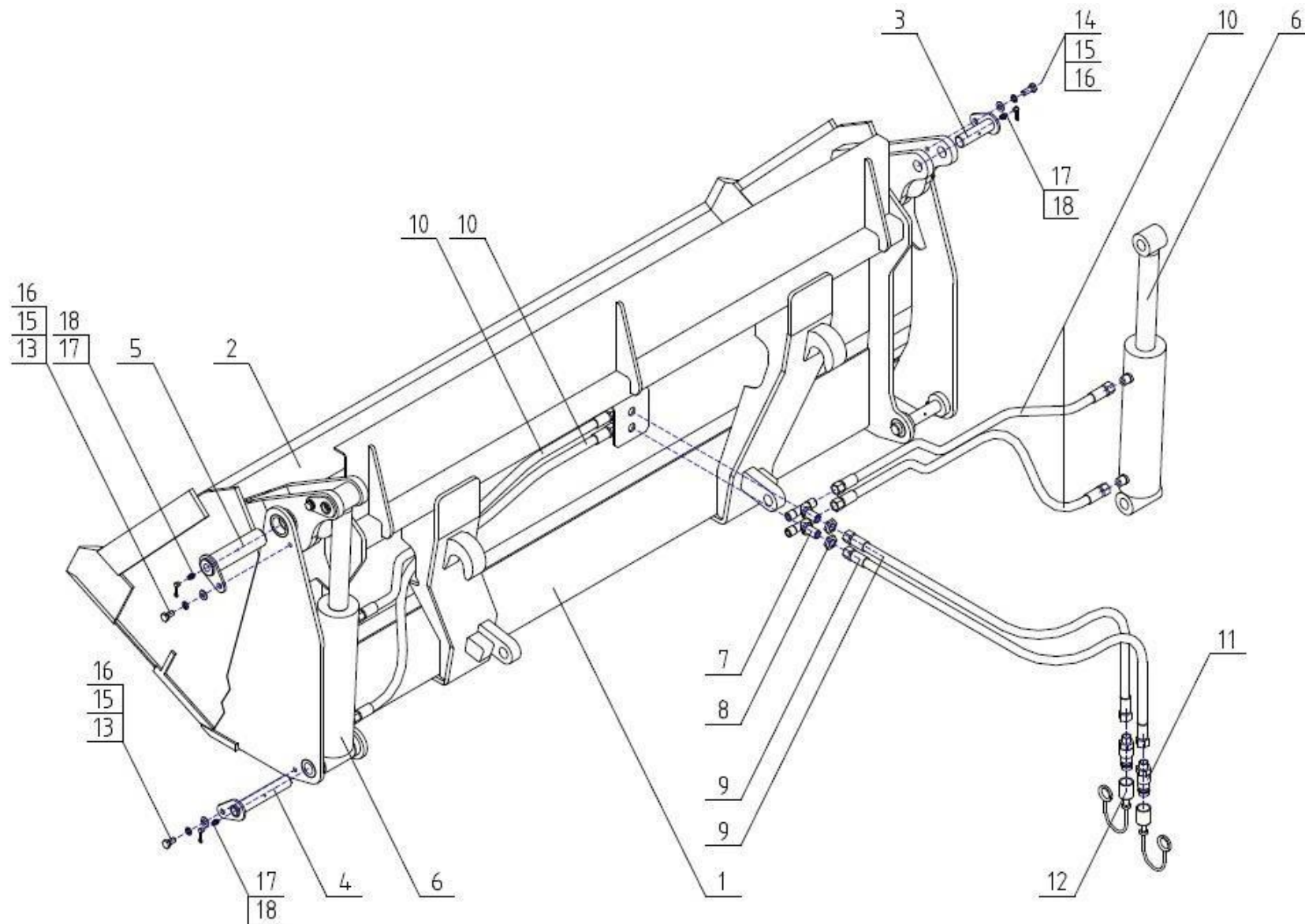
No.	Name	Fig. or index No.			
		OL.WP1.2	Volume	OL.WP1.2E	Volume
1	Fork frame	OL.RT-01.00.00.1	1	OL.RE-01.00.00.2E	1
2	Welded grapple arm	OL.LW1.2-01.01.00	2	OL.LW1.2-01.01.00	2
3	Interlock lever	OL.LW-01.00.02	2	OL.LW-01.00.02	2
4	Bolt M6 x 35	23S6/35OC	2	23S6/35OC	2
5	Round washer 6.4	23P6OOC	2	23P6OOC	2
6	Nut M6	23NS6OC	2	23NS6OC	2
7	Interlock axle	OL.LW-01.00.03	2	OL.LW-01.00.03	2
8	Spring	23S3/22/63	2	23S3/22/63	2
9	Round washer 15	23P14OC	2	23P14OC	2
10	Spring-type straight pin	23K4/30	2	23K4/30	2

20. COMBINED PALLET SHUTTLE FORKS



No.	Name	Fig. or index No.			
		OL.REZ 1.2 E	Volume	OL.REZ 1.4 E	Volume
1	Fork frame	OL.REZ 1.2 01.00.00.1E	1	OL.REZ-01.00.00.2E	1
2	Fork 1.2, complete	OL.LW1.2	2	OL.LW1.2	2
3	Straight finger L1100	POD-ODL-000003-1	2	POD-ODL-000003-1	2
4	Interlock axle	OL.LW-01.00.03	2	OL.LW-01.00.03	2
5	Spring	23S3/22/63	2	23S3/22/63	2
6	Interlock lever	OL.LW-01.00.02	2	OL.LW-01.00.02	2
7	Spring-type straight pin	23K4/30	2	23K4/30	2
8	Bolt M6 x 35	23S6/35OC	2	23S6/35OC	2
9	Bolt 16 x 30	23S16/30OC 5.8-B	2	23S16/30OC 5.8-B	2
10	Round washer 6.4	23P6OOC	2	23P6OOC	2
11	Round washer 15	23P14OC	2	23P14OC	2
12	Nut M6	23NS6OC	2	23NS6OC	2

21. CLAMSHELL BUCKET FOR GRABBING AND LEVELLING



No.	Part or assembly name	Fig. or index No.			
		OL.LKO 1.8 E	Volume	OL.LKO 1.8 S	Volume
1	Euro fixed frame	OL.LKO 1.8 01.00.00.1E	1	OL.LKO 1.8 01.00.00	1
2	Movable frame	OL.LKO 1.8 02.00.00	1	OL.LKO 1.8 02.00.00	1
3	Top pin of the cylinder	OL.LKO 00.03.00	2	OL.LKO 00.03.00	2
4	Actuator bottom pin	OL.LKO 00.04.00	2	OL.LKO 00.04.00	2
5	Frame pivotal pin	OL.LKO 00.05.00	2	OL.LKO 00.05.00	2
6	Hydraulic piston type cylinder	POD-HSL-000099	2	POD-HSL-000099	2
7	Bulkhead T-connector M18 x 1.5	24KZTG18/18/18	2	24KZTG18/18/18	2
8	Locknut M18 x 1.5	24P18/1.5	2	24P18/1.5	2
9	Flexible hydraulic hose*	24PAA/111/10 L-1300	2	24PAA/111/10 L-1300	2
10	Flexible hydraulic hose*	AA/211/10 L-850	2	AA/211/10 L-850	2
		AA/211/10 L-950	2	AA/211/10 L-950	2
11	Euro valve-plug M18 x 1.5	24ZWE13-M18X1.5	2	24ZWE13-M18X1.5	2
12	Plug valve adapter	24ZWNE13	2	24ZWNE13	2
13	Bolt M10 x 20	23S10/20OC 8.8	4	23S10/20OC 8.8	4
14	Bolt M10 x 25	23S10/25OC 8.8	2	23S10/25OC 8.8	2
15	Spring washer 10.2	23P10SP	6	23P10SP	6
16	Spring washer 10.5	23P10 82005	6	23P10 82005	6
17	Grease nipple M10 x 1	23SM10/1	6	23SM10/1	6
18	Red protective cap	23KOC	6	23KOC	6

No.	Part or assembly name	Fig. or index No.			
		OL.LKO 2.0 E	Volume	OL.LKO 2.0 S	Volume
1	Euro fixed frame	OL.LKO 2.0 01.00.00.E.1	1	OL.LKO 2.0 01.00.00	1
2	Movable frame	OL.LKO 2.0 02.00.00	1	OL.LKO 2.0 02.00.00	1
3	Cylinder top pin	OL.LKO 00.03.00	2	OL.LKO 00.03.00	2
4	Actuator bottom pin	OL.LKO 00.04.00	2	OL.LKO 00.04.00	2
5	Frame pivotal pin	OL.LKO 00.05.00	2	OL.LKO 00.05.00	2
6	Hydraulic piston type cylinder	POD-HSL-000099	2	POD-HSL-000099	2
7	Bulkhead T-connector M18 x 1.5	24KZTG18/18/18	2	24KZTG18/18/18	2
8	Locknut M18 x 1.5	24P18/1.5	2	24P18/1.5	2
9	Flexible hydraulic hose*	24PAA/111/10 L-1300	2	24PAA/111/10 L-1300	2
10	Flexible hydraulic hose*	AA/211/10/L-950	2	AA/211/10/L-950	2
		AA/211/10/L-1050	2	AA/211/10/L-1050	2
11	Euro valve-plug M18 x 1.5	24ZWE13-M18X1.5	2	24ZWE13-M18X1.5	2
12	Plug valve adapter	24ZWNE13	2	24ZWNE13	2
13	Bolt M10 x 20	23S10/20OC 8.8	4	23S10/20OC 8.8	4
14	Bolt M10 x 25	23S10/25OC 8.8	2	23S10/25OC 8.8	2
15	Spring washer 10.2	23P10SP	6	23P10SP	6
16	Spring washer 10.5	23P10 82005	6	23P10 82005	6
17	Grease nipple M10 x 1	23SM10/1	6	23SM10/1	6
18	Red protective cap	23KOC	6	23KOC	6

No.	Part or assembly name	Fig. or index No.			
		OL.LKO 2.2 E	Volume	OL.LKO 2.2 S	Volume
1	Euro fixed frame	OL.LKO 2.2 01.00.00.E	1	OL.LKO 2.2 01.00.00	1
2	Movable frame	OL.LKO 2.2 02.00.00	1	OL.LKO 2.2 02.00.00	1
3	Cylinder top pin	OL.LKO 00.03.00	2	OL.LKO 00.03.00	2
4	Actuator bottom pin	OL.LKO 00.04.00	2	OL.LKO 00.04.00	2
5	Frame pivotal pin	OL.LKO 00.05.00	2	OL.LKO 00.05.00	2
6	Hydraulic piston type cylinder	POD-HSL-000099	2	POD-HSL-000099	2
7	Bulkhead T-connector M18 x 1.5	24KZTG18/18/18	2	24KZTG18/18/18	2
8	Locknut M18 x 1.5	24P18/1.5	2	24P18/1.5	2
9	Flexible hydraulic hose*	24PAA/111/10 L-1300	2	24PAA/111/10 L-1300	2
10	Flexible hydraulic hose*	AA/211/10/ L-1050	2	AA/211/10/ L-1150	2
		AA/211/10/ L-1150	2	AA/211/10/ L-1150	2
11	Euro valve-plug M18 x 1.5	24ZWE13-M18X1.5	2	24ZWE13-M18X1.5	2
12	Plug valve adapter	24ZWNE13	2	24ZWNE13	2
13	Bolt M10 x 20	23S10/20OC 8.8	4	23S10/20OC 8.8	4
14	Bolt M10 x 25	23S10/25OC 8.8	2	23S10/25OC 8.8	2
15	Spring washer 10.2	23P10SP	6	23P10SP	6
16	Spring washer 10.5	23P10 82005	6	23P10 82005	6
17	Grease nipple M10 x 1	23SM10/1	6	23SM10/1	6
18	Red protective cap	23KOC	6	23KOC	6

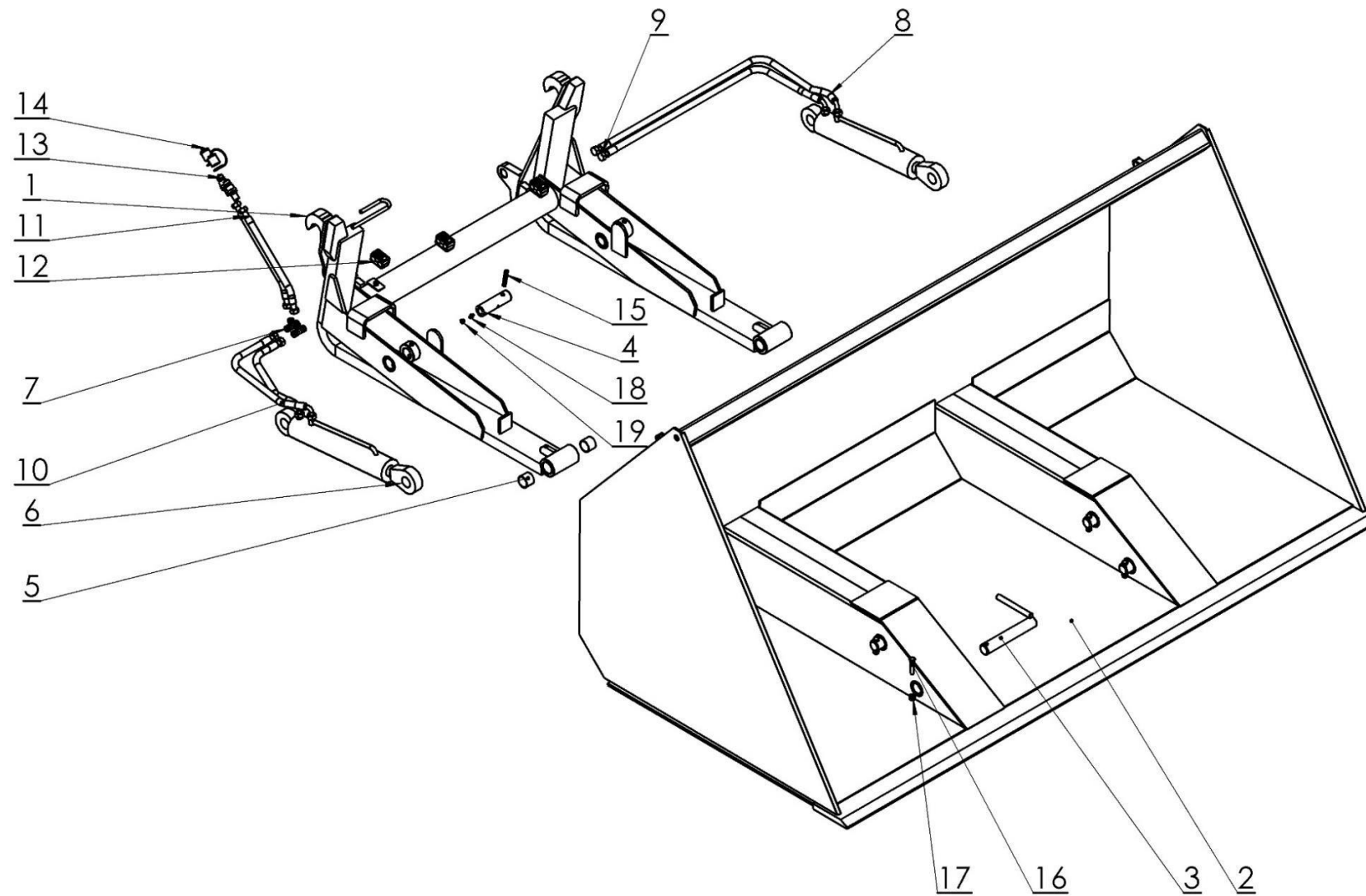
* Hydraulic hoses (items 9-10) are included in the following sets:

POD-HPR-000426 set No. 54: OL.LKO 1.8 E clamshell bucket

POD-HPR-000459 set No. 54-1: OL.LKO 2.0 E clamshell bucket

POD-HPR-000683 set No. 54-2: OL.LKO 2.2 E / 2.2 S clamshell bucket

22. EURO HIGH DUMP BUCKET

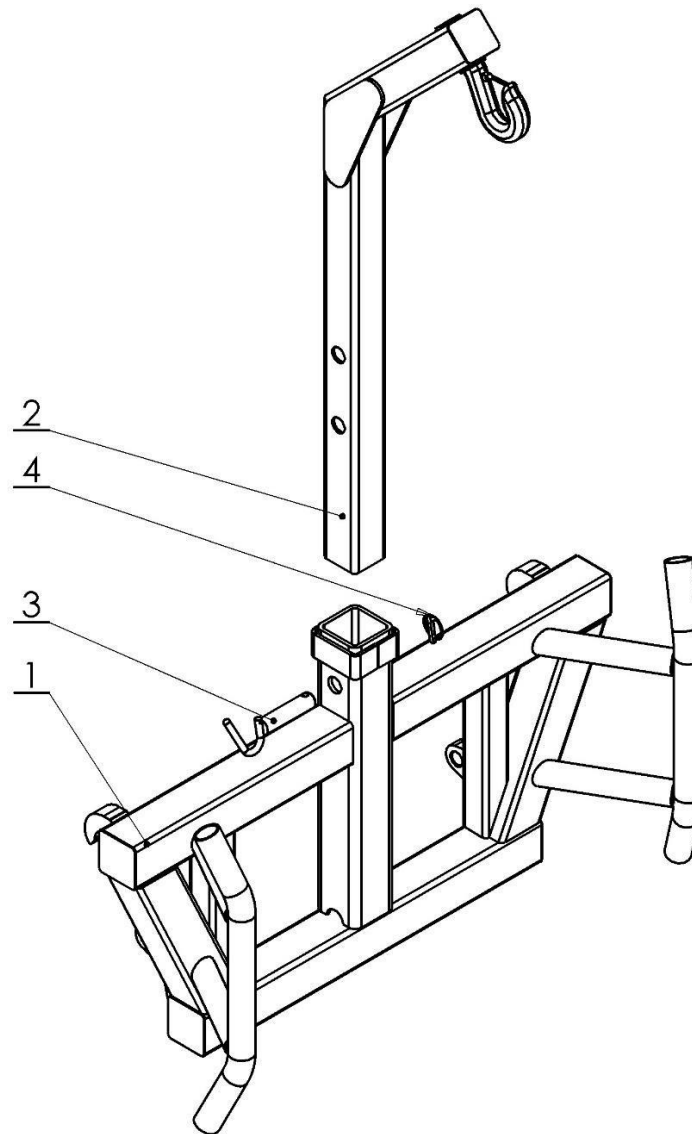


No.	Name	Fig. or index No.	
		OL.LWW 2.3E	Volume
1	Forks, complete	OL.LWW 01.00.00E	1
2	Bucket	OL.LWW 02.00.00	1
3	Pin, complete	OL.LWW 03.00.00	4
4	Pin	OL.LWW 00.00.04	2
5	Sleeve GSM-3539-40	POD-LOZ-000220	4
6	Cylinder 63/36/250	POD-HSL-000111	2
7	T-connector 18 x 18 x 18	24KT18/18/18	2
8	Flexible hydraulic hose	A90A/111/10-890	1
9	Flexible hydraulic hose	A90A/111/10-850	1
10	Flexible hydraulic hose	A90A/111/10-520	2
11	Flexible hydraulic hose	AA/111/10-2000	2
12	HBK handle	POD-HPZ-000005-1	3
13	Euro valve-plug M18 x 1.5	24ZWE13-M18X1.5	2
14	Plug valve adapter	24ZWNE13	2
15	Spring-type pin 10 x 60	POD-ELZ-000398	2
16	Bolt M10 x 50	POD-ELZ-000051-1	4
17	Self-locking nut M10	23NS10OC	4
18	Lubricating nipple M6 x 1.0	23SM	2
19	Red protective cap	23KOC	1

*Hydraulic hoses (items 8-11) are included in the following set:

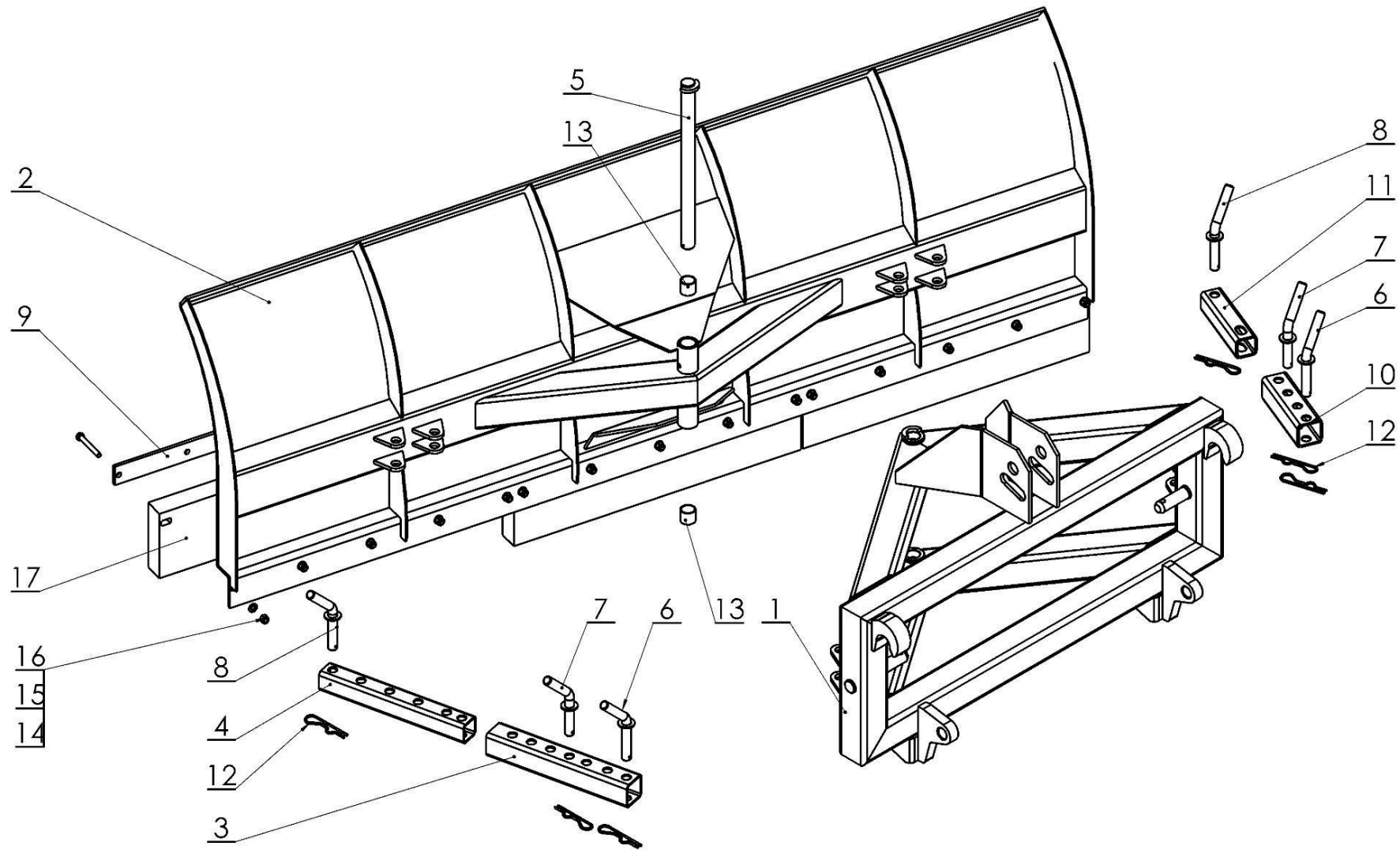
POD-HPR-000509 set No. 66: OL.LWW, OL.LWWCA bucket 2.3 m

23. FERTILISER BAG LIFTER



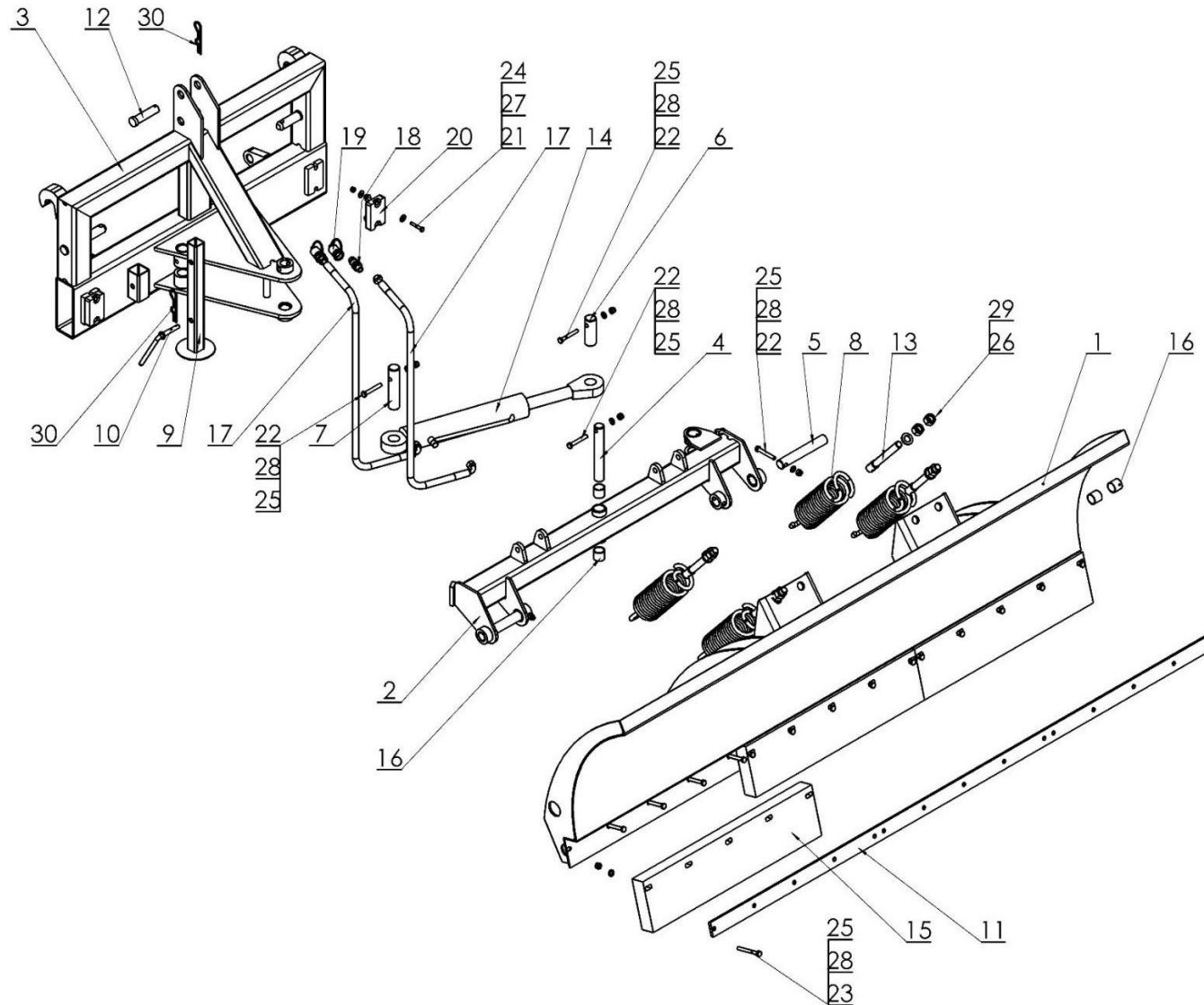
No.	Part or assembly name	Fig. or index No.			
		OL.PB E	Volume	OL.PB	Volume
1	Main frame	OL.PB 01.00.00.3E	1	OL.PB 01.00.00	1
2	Arm	OL.PB 02.00.00 arm	1	OL.PB 02.00.00 arm	1
3	Lock pin, complete	OL.PB 03.00.00	1	OL.PB 03.00.00	1
4	Cotter pin with a ring	23PR11	1	23PR11	1

24. 2.2 M SNOW PLOUGH SUSPENDED ON A LODER, EURO LIGHT TYPE



No.	Part or assembly name	Fig. or index No.			
		OL.PS 2.2E	Volume	OL.PS 2.2 SMS	Volume
1	Welded frame I	OL.PS 01.00.00.2E	1	OL.PS 01.00.00	1
2	Plough frame II	OL.PS 2.2 02.00.00.2	1	OL.PS 2.2 02.00.00.2	1
3	Lock section I	OL.PS 00.00.03.1	1	OL.PS 00.00.03.1	1
4	Section II	OL.PS 00.00.04	1	OL.PS 00.00.04	1
5	Main pin	OL.PS 00.05.00.1	1	OL.PS 00.05.00.1	1
6	Cotter pin I, complete	OL.PS 00.06.00	2	OL.PS 00.06.00	2
7	Cotter pin II, complete	OL.PS 00.07.00	2	OL.PS 00.07.00	2
8	Cotter pin III, complete	OL.PS 00.08.00	2	OL.PS 00.08.00	2
9	Clamp for inserts	OL.PS 2.2 00.00.09.1	1	OL.PS 2.2 00.00.09.1	1
10	Lock section III	OL.PS 00.00.12.1	1	OL.PS 00.00.12.1	1
11	Section IV	OL.PS 00.00.13.1	1	OL.PS 00.00.13.1	1
12	Elastic single cotter pin 4 (R-letter shaped, single)	23ZRFI4	6	23ZRFI4	6
13	Sleeve PAP 3030 P20	POD-LOZ-000112	2	POD-LOZ-000112	2
14	Bolt M10 x 80	POD-ELZ-000452	15	POD-ELZ-000452	15
15	Round washer 10.5	23P10 82005	15	23P10 82005	15
16	Self-locking nut M10	23NS10OC	15	23NS10OC	15
17	Rubber 73.5 x 17.5 x 5	POD-TSZ-000120	3	POD-TSZ-000120	3

25. SNOW PLOUGH WITH A MECHANICAL PROTECTION SUSPENDED ON A EURO SPRING TYPE 2.2 M LOADER

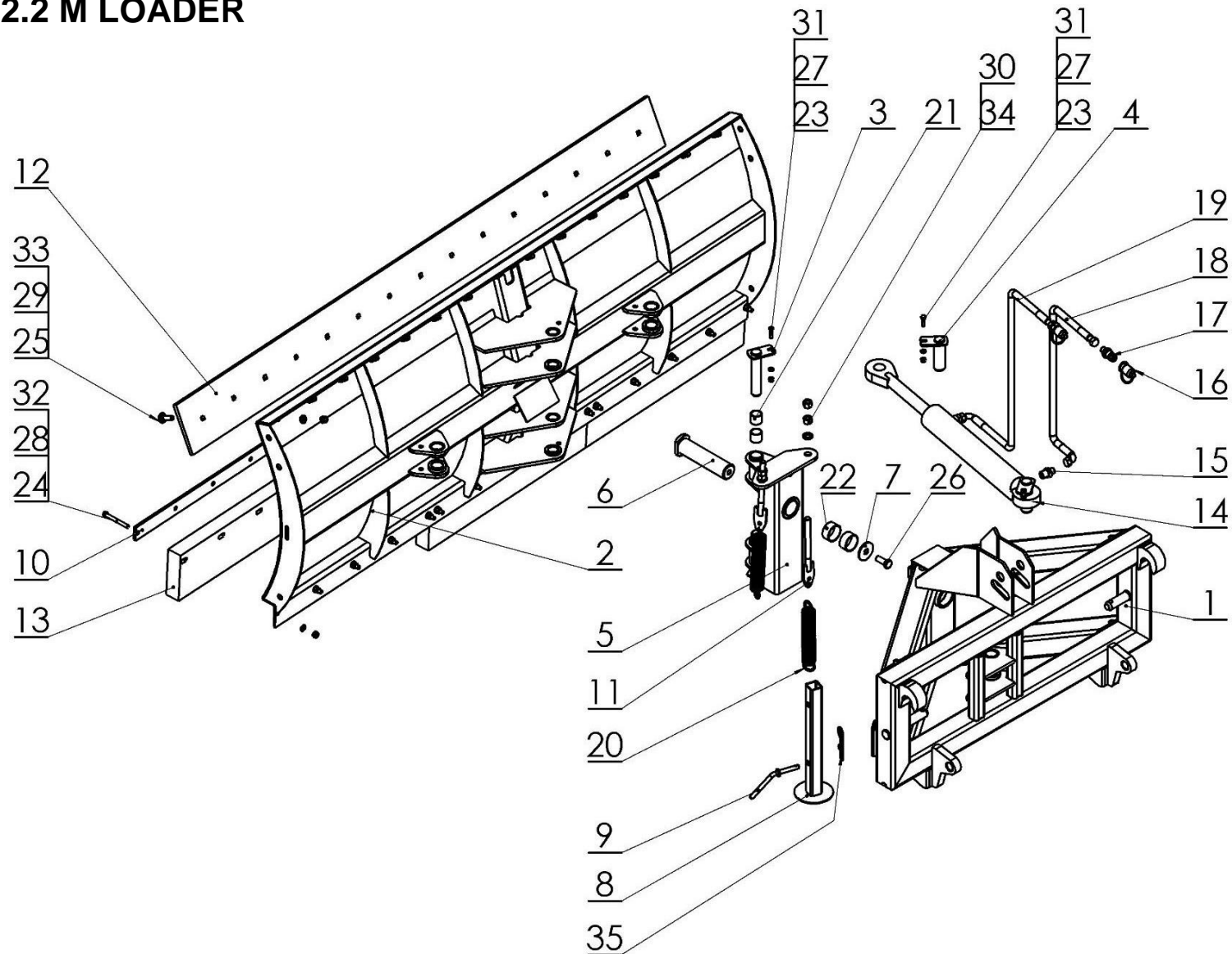


No.	Part or assembly name	Fig. or index No.			
		OL.PSZM 2.2E	Volume	OL.PSZM 2.2SMS	Volume
1	Ploughshare 2.2 m	OL.PSZM 2.2 01.00.00.1	1	OL.PSZM 2.2 01.00.00.1	1
2	Welded connector	OL.PSZM 02.00.00.1	1	OL.PSZM 02.00.00.1	1
3	Welded frame of the lifting clamp	OL.PSZM 03.00.00.2E	1	OL.PSZM 03.00.00S	1
4	Pin I	OL.PSZM 00.00.04.1	1	OL.PSZM 00.00.04.1	1
5	Pin II	OL.PSZM 00.00.05.1	2	OL.PSZM 00.00.05.1	2
6	Pin III	OL.PSZM 00.00.06.1	1	OL.PSZM 00.00.06.1	1
7	Pin IV	OL.PSZM 00.00.07.1	1	OL.PSZM 00.00.07.1	1
8	Spring	POD-SPR-000072	2	POD-SPR-000072	2
9	Support foot	OL.PSWH 08.00.00	1	OL.PSWH 08.00.00	1
10	Foot protection	OL.PSWH 09.00.00	1	OL.PSWH 09.00.00	1
11	Clamp for inserts	OL.PS 2.2 00.00.09.1	1	OL.PS 2.2 00.00.09.1	1
12	Pin I	OL.PSZM 00.00.10	1	OL.PSZM 00.00.10	1
13	Spring tensioning device	OL.PSZM 00.00.11	2	OL.PSZM 00.00.11	2
14	Cylinder 63/36/250	POD-HSL-000111	1	POD-HSL-000111	1
15	Rubber 73.5 x 17.5 x 5	POD-TSZ-000120	3	POD-TSZ-000120	3
16	Sleeve PAP 3030 P20	POD-LOZ-000112	6	POD-LOZ-000112	6
17	Flexible hydraulic hose	A90A/111/10-2500	2	A90A/111/10-2500	2
18	Euro valve-plug M18 x 1.5	24ZWE13-M18X1.5	2	24ZWE13-M18X1.5	2
19	Plug valve adapter	24ZWNE13	2	24ZWNE13	2

No.	Part or assembly name	Fig. or index No.			
		OL.PSZM 2.2E	Volume	OL.PSZM 2.2SMS	Volume
20	Cushion – Rubber bumper	POD-TSZ-000007-1	2	POD-TSZ-000007-1	2
21	Bolt M8 x 45	23S8/45OC 8.8	8	23S8/45OC 8.8	8
22	Bolt M10 x 70	23S10/70	5	23S10/70	5
23	Bolt M10 x 80	POD-ELZ-000452	15	POD-ELZ-000452	15
24	Self-locking nut M8	23NS8OC	8	23NS8OC	8
25	Self-locking nut M10	23NS10OC	21	23NS10OC	21
26	Nut M20	23N20OC	8	23N20OC	8
27	Round washer 8.4	23P8OOC	16	23P8OOC	16
28	Round washer 10.5	23P10 82005	20	23P10 82005	20
29	Round washer 20	23P20OOC	4	23P20OOC	4
30	Elastic single cotter pin 4 (R-letter shaped, single)	23ZRFI4	6	23ZRFI4	6

*Hydraulic hoses (item 17) are included in the following set: POD-HPR-000456 set No. 59-3: OŁ.PSZM snow plough

26. 2.2M MULTI TYPE DOUBLE-SIDED SNOW PLOUGH SUSPENDED ON A 2.2 M LOADER

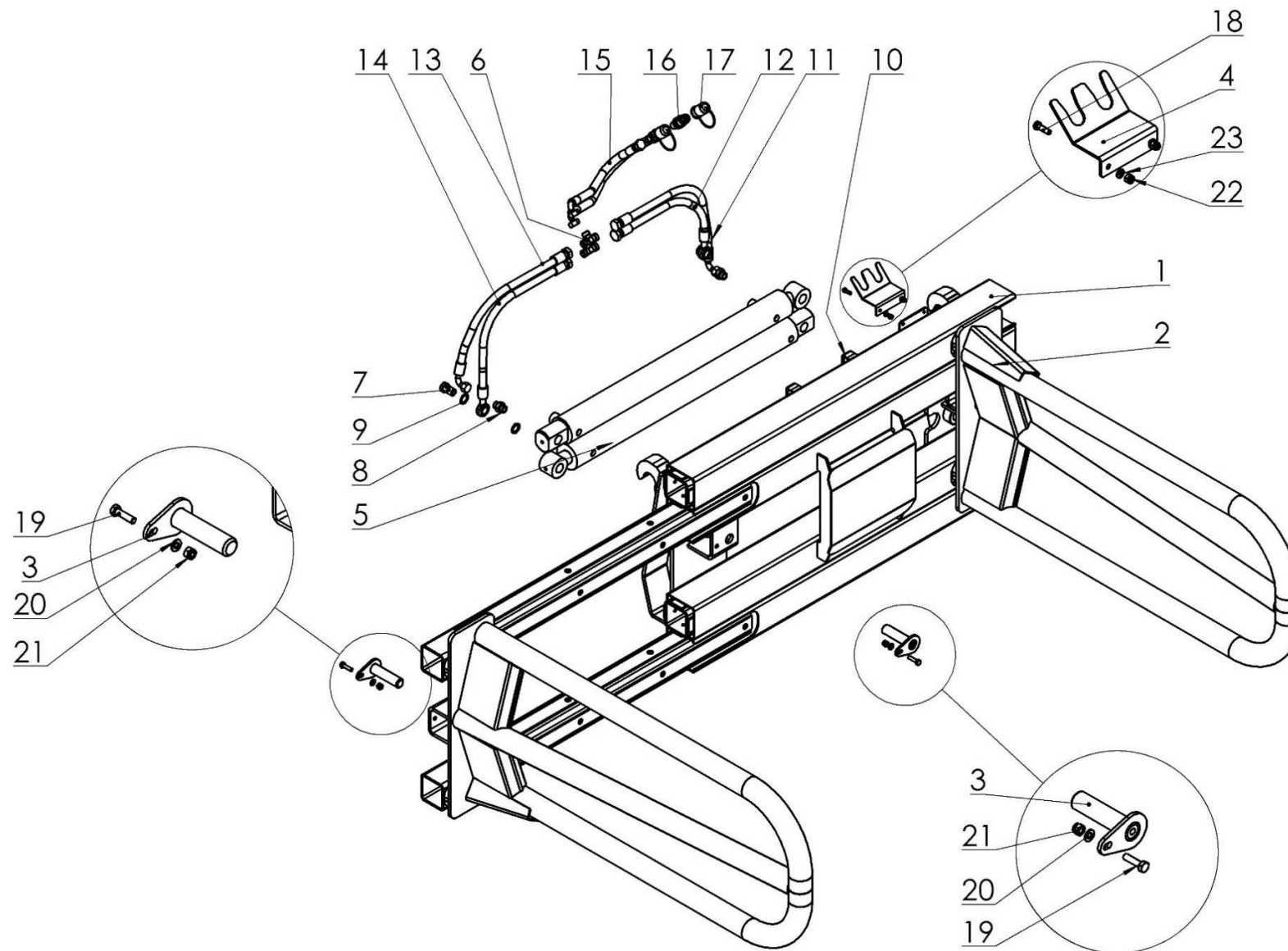


No.	Part or assembly name	Fig. or index No.			
		OL.PSWH 2.2 E	Volume	OL.PSWH 2.2 SMS	Volume
1	Self-aligning plough frame	OL.PSWH 01.00.00.3E	1	OL.PSWH 01.00.00	1
2	Frame II of the 2.2 m double-sided plough	OL.PSWH 2.2 02.00.00	1	OL.PSWH 2.2 02.00.00	1
3	Main pin, complete	OL.PSWH 03.00.00.1	2	OL.PSWH 03.00.00.1	2
4	Servo pin set	OL.PSWH 04.00.00.1	2	OL.PSWH 04.00.00.1	2
5	Swivel joint	OL.PSWH 05.00.00	1	OL.PSWH 05.00.00	1
6	Rotation pin	OL.PSWH 00.00.06	1	OL.PSWH 00.00.06	1
7	Special washer	OL.PSWH 00.00.07	1	OL.PSWH 00.00.07	1
8	Support foot	OL.PSWH 08.00.00	1	OL.PSWH 08.00.00	1
9	Foot protection	OL.PSWH 09.00.00	1	OL.PSWH 09.00.00	1
10	Clamp for inserts	OL.PS 2.2 00.00.09.1	1	OL.PS 2.2 00.00.09.1	1
11	Spring tensioning device	OL.PSP 19.00.00	2	OL.PSP 19.00.00	2
12	2.2 m levelling plate	OL.PSP.OH 2.2 00.00.21	1	OL.PSP.OH 2.2 00.00.21	1
13	Rubber 73.5 x 17.5 x 5	POD-TSZ-000120	3	POD-TSZ-000120	3
14	Cylinder 63/36/320z*L-602	24SCJ2F63/36/320Z	1	24SCJ2F63/36/320Z	1
15	Straight connector 22 x 18-1.5	24KP22/18	2	24KP22/18	2
16	Euro valve-plug M18 x 1.5	24ZWE13-M18X1.5	2	24ZWE13-M18X1.5	2
17	Plug valve adapter	24ZWNE13	2	24ZWNE13	2
18	Flexible hydraulic hose	A90A/111/10-2500	1	A90A/111/10-2500	1
19	Flexible hydraulic hose	A90A/111/10-2800	1	A90A/111/10-2800	1

No.	Part or assembly name	Fig. or index No.			
		OL.PSWH 2.2 E	Volume	OL.PSWH 2.2 SMS	Volume
20	Tension spring	23SN5/40/255	2	23SN5/40/255	2
21	Sleeve PAP 3030 P20	POD-LOZ-000112	4	POD-LOZ-000112	4
22	Sleeve PAP 5025 P20	POD-LOZ-000199	2	POD-LOZ-000199	2
23	Bolt M8 x 30	23S8/30 8.8	4	23S8/30 8.8	4
24	Bolt M10 x 80	POD-ELZ-000452	15	POD-ELZ-000452	15
25	Carriage bolt 12 x 40 galv.	POD-ELZ-000393	15	POD-ELZ-000393	15
26	Bolt 16 x 40	23S16/40 8.8OC	1	23S16/40 8.8OC	1
27	Round washer 8.4	23P8OOC	4	23P8OOC	4
28	Round washer 10.5	23P10 82005	15	23P10 82005	15
29	Round washer 13	23P12OC	15	23P12OC	15
30	Round washer 17	23P16OOC	2	23P16OOC	2
31	Self-locking nut M8	23NS8OC	15	23NS8OC	15
32	Self-locking nut M10	23NS10OC	4	23NS10OC	4
33	Self-locking nut M12	23NS12OC	15	23NS12OC	15
34	Nut M16	23N16OC	4	23N16OC	4
35	Elastic single cotter pin 4 (R-letter shaped, single)	23ZRFI4	1	23ZRFI4	1

*Hydraulic hoses (items 18-19) are included in the following set: POD-HPR-000455 set No. 59-2: OL.PSWH 2.2E snow plough

27. RECTANGULAR BALE GRABBER

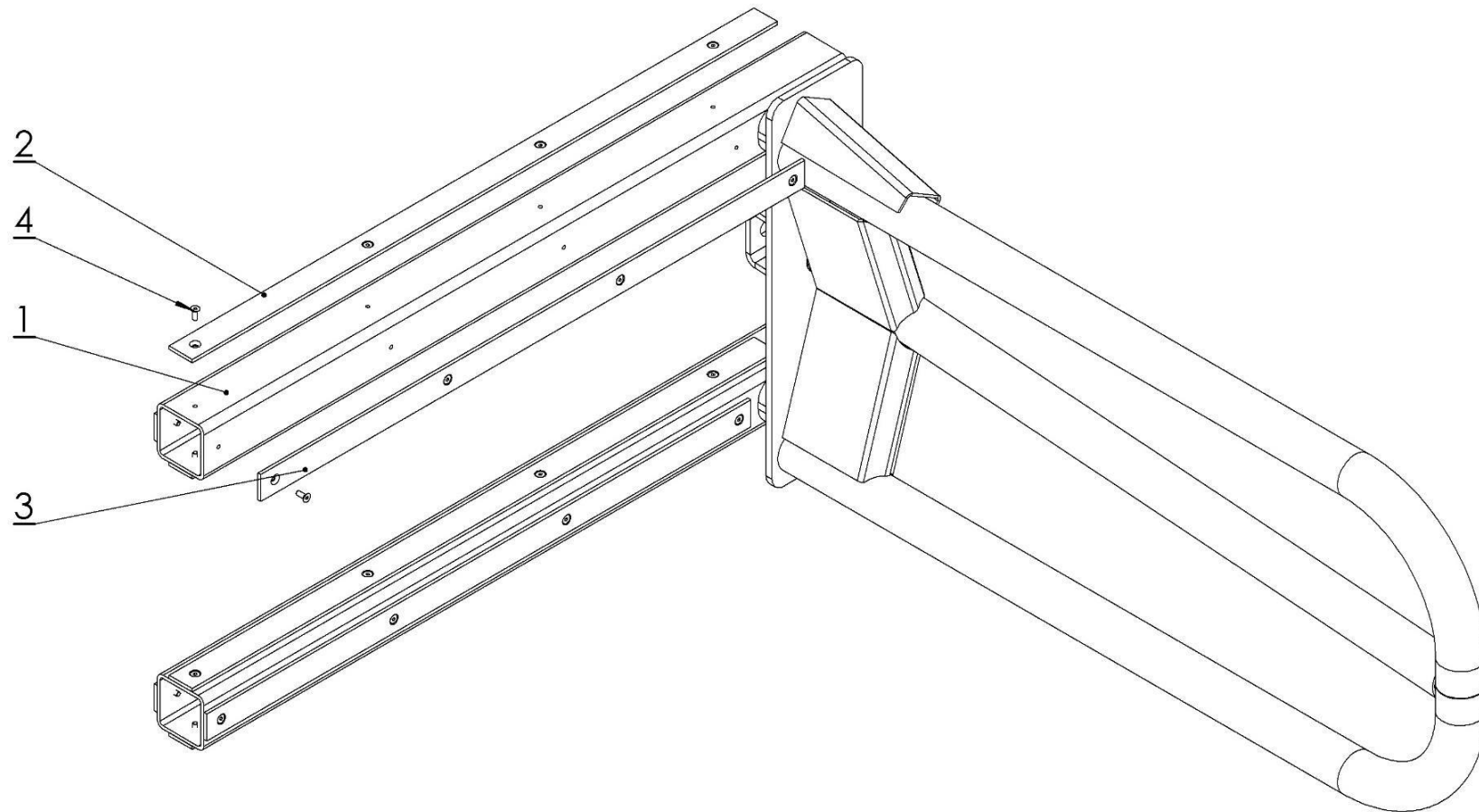


No.	Name	Fig. or index No.	
		OL.CHP	Volume
1	Complete frame	OL.CHP 01.00.00E	1
2	Mobile arm, complete	OL.CHP 02.00.00	2
3	Pin, complete	OL.CHP 00.03.00	4
4	Hook for cables	OL.CHB 01.00.14.1	1
5	Membrane	POD-HSL-000191	2
6	Asymmetric T	24KT18/18/18	2
7	Eye bolt M18 x 1.5	24SO18/1.5	2
8	Straight connection 18 x 18-1.5	POD-HKR- 000040	2
9	Metal & rubber washer PPM18 26x18	24UPPM18	4
10	HBK handle diam. 18 x 2 – double	POD-HPZ- 000005-1	2
11	Flexible hydraulic hose	A90A/111/10 L- 570	1
12	Flexible hydraulic hose	ARNM/111/10 L- 440	1
13	Flexible hydraulic hose	A90A/111/10 L- 480	1
14	Flexible hydraulic hose	ARNM/111/10 L- 540	1
15	Flexible hydraulic hose	A9A/111/10 L- 2000	2
16	Euro valve-plug M18 x 1.5	24ZWE13- M18X1.5	2
17	Plug valve adapter	24ZWNE13	2
18	Bolt M6 x 20	23S6/20	2

No.	Name	Fig. or index No.	
		OL.CHP	Volume
19	Bolt M8 x 30	23S8/30 8.8	2
20	Round washer 8.4	23P8OOC	4
21	Self-locking nut M8	23NS8OC	4
22	Self-locking nut M6	23NS6OC	2
23	Round washer 6.4	23P6OOC	4

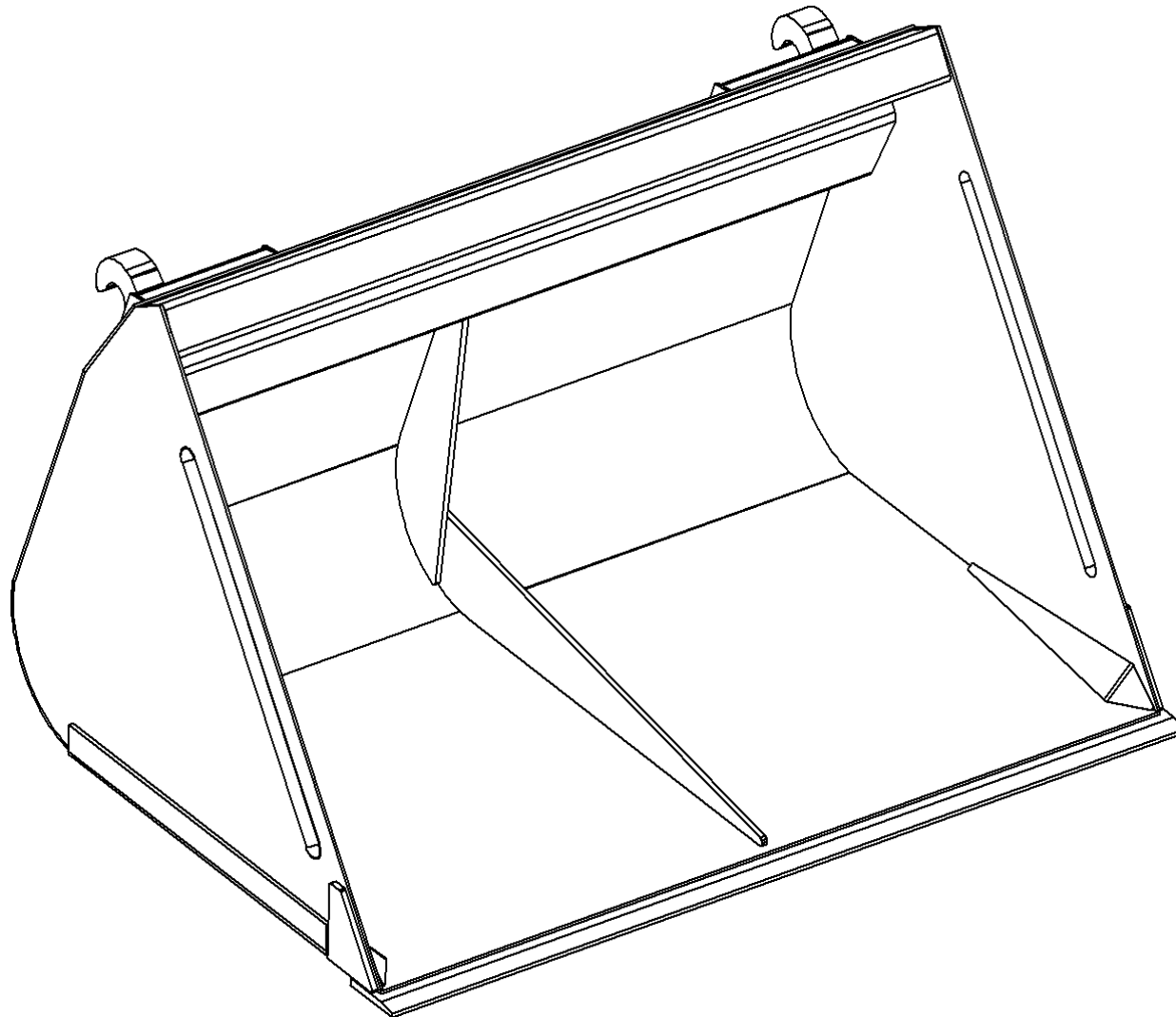
*Hydraulic hoses (items 11-15) are included in the following sets: POD-HPR-000623 set No. 78: OL.CHP E grabber

28. RECTANGULAR BALE GRIPPER – ARM



No.	Name	Fig. or index No.	
		OL.CHP 02.00.00	Volume
1	Swing arm	OL.CHP 02.01.00	1
2	Long slide	OL.CHP 00.00.04	6
3	Short slide	OL.CHP 00.00.05	2
4	Countersunk screw 6 x 16	POD-ELZ-000753	32

29. BUCKET FOR LOOSE MATERIAL



No.	Part or assembly name	Fig. or index No.			
		OL.LK	Volume	OL.LK 2	Volume
1	Bucket for loose material (SMS mounting)	OL.LK 1.2	1	OL.LK2 1.2	1
		OL.LK 1.5	1	OL.LK2 1.5	1
		OL.LK 1.8	1	OL.LK2 1.8	1
		OL.LK 2.0	1	OL.LK2 2.0	1
		OL.LK 2.2	1	OL.LK2 2.2	1
		OL.LK 2.4	1	OL.LK2 2.4	1
2	Bucket for loose material (EURO mounting)	OL.LK 1.2 E	1	OL.LK2 1.2 E	1
		OL.LK 1.5 E	1	OL.LK2 1.5 E	1
		OL.LK 1.8 E	1	OL.LK2 1.8 E	1
		OL.LK 2.0 E	1	OL.LK2 2.0 E	1
		OL.LK 2.2 E	1	OL.LK2 2.2 E	1
		OL.LK 2.4 E	1	OL.LK2 2.4 E	1



Metal-Fach Sp. z o.o. is constantly improving its products and adjusting its package to the needs of its customers, so it reserves the right to make changes to its product range without notice. Therefore, before making your purchase decision, please contact an authorised dealer or sales representative of Metal-Fach Sp. z o.o. Metal-Fach Sp. z o.o. will not accept any complaints regarding the data and pictures contained in the catalogue, as the presented range of products does not constitute an offer within the meaning of the provisions of the Civil Code.

The pictures do not necessarily show standard accessories.

Original spare parts are available from authorised dealers, both in Poland and abroad, and also at the Metal-Fach retail outlet.

TECHNICAL SERVICE

16-100 Sokółka, ul. Kresowa 62
phone: +48 85 711 07 80; fax: +48 85 711 07 93
serwis@metalfach.com.pl

SALES

16-100 Sokółka, ul. Kresowa 62
phone: +48 85 711 07 78; fax: +48 85 711 07 89
handel@metalfach.com.pl

SPARE PARTS WHOLESALE STORE

16-100 Sokółka, ul. Kresowa 62

Wholesale:
phone: 85 711 07 81; fax: 85,711 07 93
hurtownia@metalfach.com.pl

Spare parts - retail sales
24/7 PHONE: +48 533 111 477
Phone: +48 85 711 07 90
sklep.kontakt@metalfach.com.pl

CURRENT INFORMATION ABOUT OUR PRODUCTS CAN BE FOUND ON WWW.METALFACH.COM.PL