



# METAL-FACH



## SELF-LOADING BALE WRAPPER WITH MECHANICAL FILM CUTTER

### Z577

PARTS CATALOGUE  
REVISION IV  
MARCH 2022



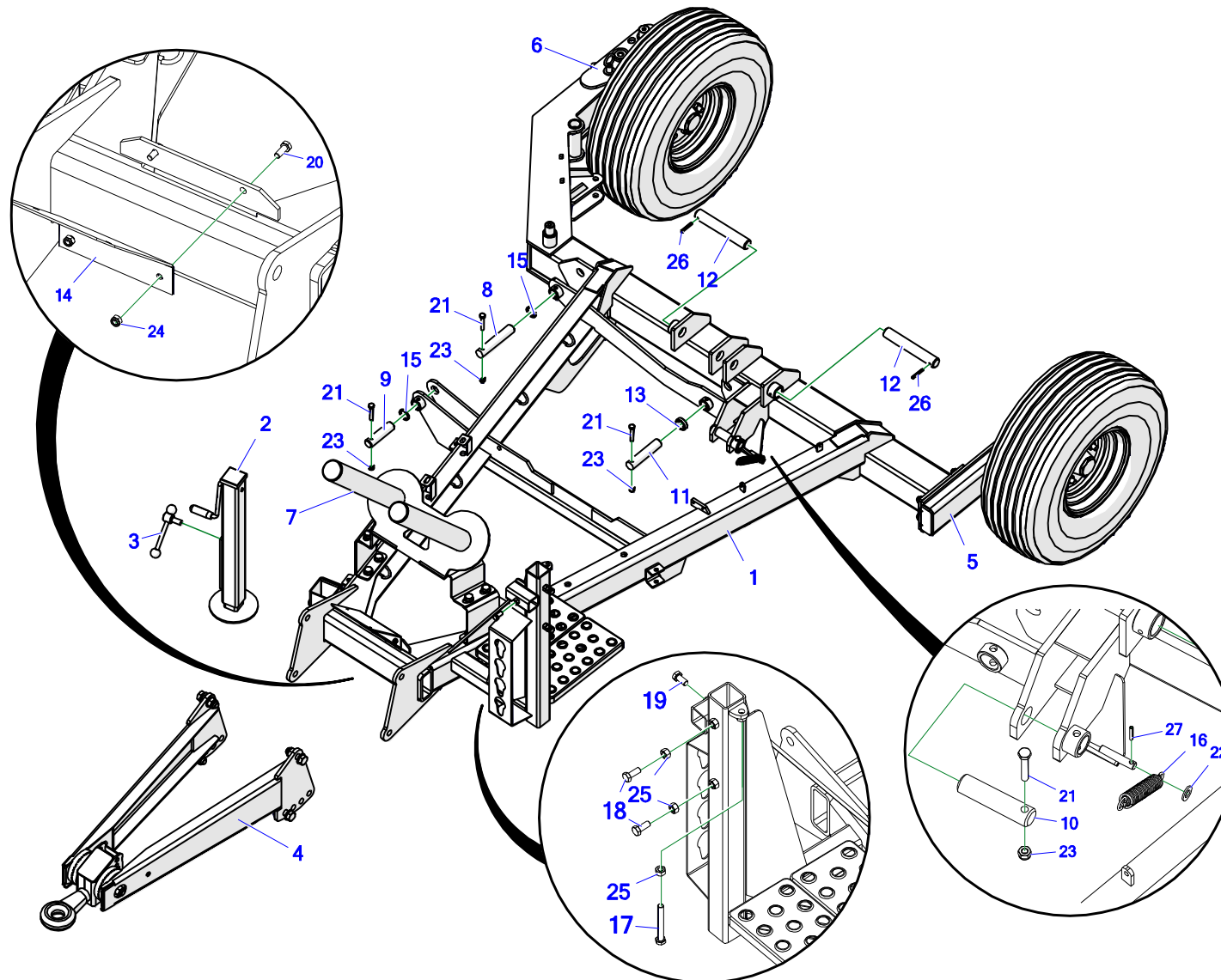
The information included in the catalogue is valid as of the date of its preparation. The manufacturer reserves its right to make design changes to machines, and due to this, some values or illustrations might not correspond to the actual state of the machine supplied to the user. The manufacturer reserves its right to make design changes without changing this catalogue.

## Table of Contents

1. MAIN FRAME, PART 1.....	5
2. MAIN FRAME, PART 2.....	8
3. DRAWBAR.....	10
4. FILM BRACKET.....	12
5. PARKING SUPPORT.....	14
6. WHEEL AXLES.....	16
7. MOVABLE FRAME – PART 1.....	18
8. MOVABLE FRAME – PART 2.....	20
9. ROTARY FRAME – PART 1.....	23
10. ROTARY FRAME – PART 2.....	25
11. ROTARY FRAME – GEAR.....	28
12. ROTARY FRAME – GEARBOX COVER.....	30
13. ROTARY FRAME – THICK SHAFT I.....	32
14. ROTARY FRAME – THIN SHAFT II.....	34
15. LOADING ARM.....	36
16. REVERSE FILM FEEDER.....	38
17. BALE TIPPER.....	42
18. MECHANICAL FILM CUTTER.....	45
19. HYDRAULICS – WORK TABLE.....	48
20. HYDRAULICS – MOVABLE FRAME.....	50
21. HYDRAULICS – LOADING ARM.....	52
22. HYDRAULICS – CONTROL LEVERS.....	54
23. LIGHTS – FRONT.....	56

24. LIGHTS – REAR.....	58
25. HITCH PROTECTION (EU APPROVAL).....	60
NOTES.....	62

# 1. MAIN FRAME, PART 1

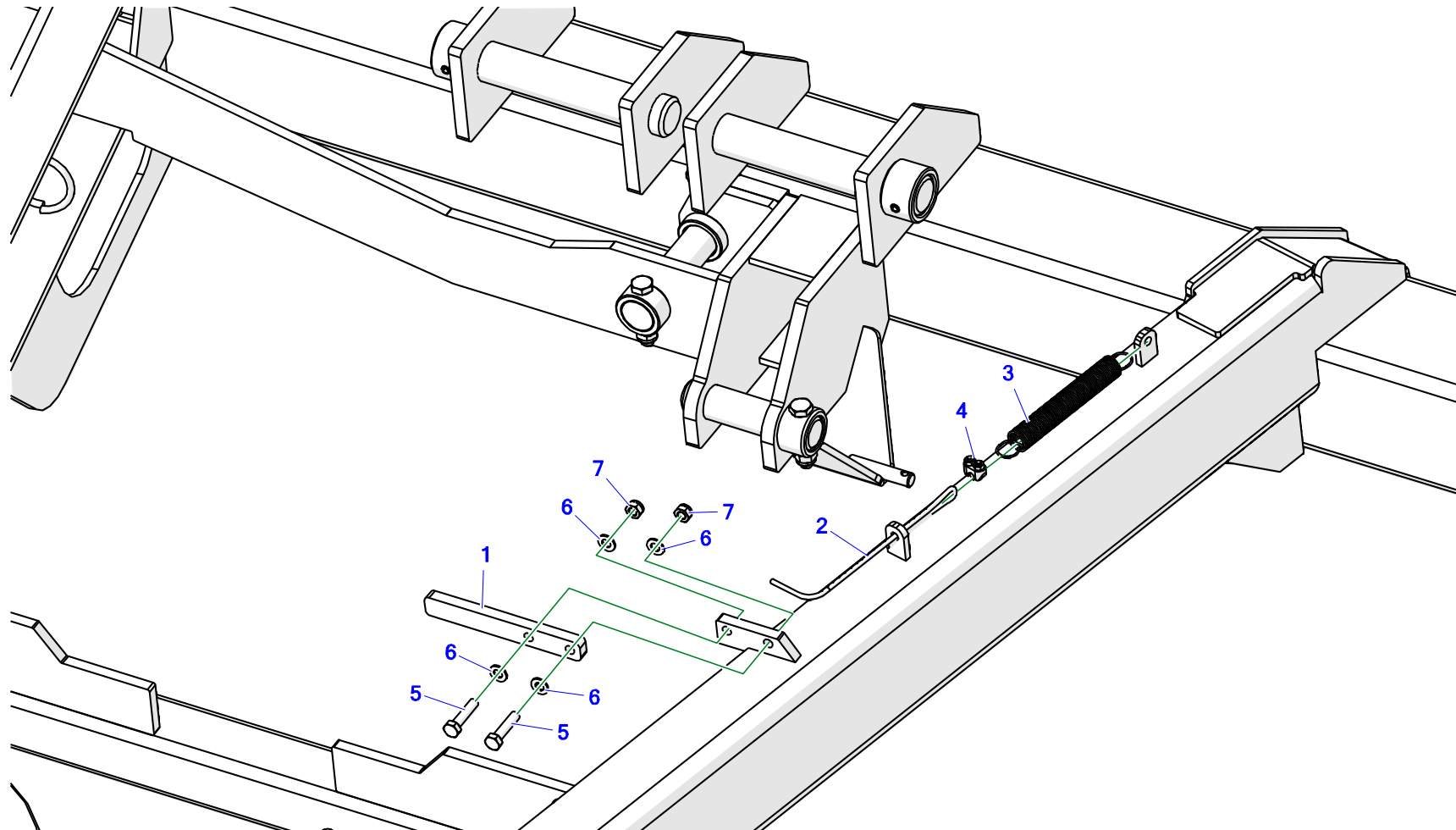


**Tabela 1. Main frame, part 1**

No.	No.	Part or assembly name	Volume
1.	Z-577 01.01.00	Main frame, welded	1
2.	Z577-10 01.02.00	self-loading parking jack	1
3.	Z577-10 01.02.10	Parking jack clamp, assy.	1
4.	Z-577 01.03.00	Drawbar mount	1
5.	Z577-10 01.05.00	Wheel support	1
6.	Z577-10 01.06.00	Rotation axle shaft	1
7.	Z577-10 01.10.00	Welded film bracket.	1
8.	Z-577 00.00.21	Loading arm mounting pin I	1
9.	Z-577 00.00.22	Loading arm mounting pin II	1
10.	Z-577 00.00.23	Actuator mounting pin II	1
11.	Z-577 00.00.25	Actuator mounting pin III	1
12.	Z-577 00.00.27.1	Movable frame mounting pin	2
13.	Z-577 00.00.29	Spacer bushing	1
14.	Z-577 00.17.01.1	Separator device support	1
15.	Z577-10 01.00.02	Spacer bushing	2
16.	23SPN3/23/135 MAZ1771/1	Tension spring 3/23/136/34 galv., (maz-1771/B-1)	1
17.	23S12/100OC 8.8	Bolt 12 x 100 galv., 8.8 82101 82101	1
18.	23S12/30OC 8.8	Bolt 12 x 30 galv., 8.8 82105 82105	2
19.	23S12/25OC 8.8	Screw 12 x 25 galv., 8.8 82105 82105	1

No.	No.	Part or assembly name	Volume
20.	23S8/20OC 8.8	Bolt 8 x 20 galv., 8.8 82105 82105	2
21.	23S10/60OC 8.8	Bolt 10 x 60 galv. 8.8 82101 82101	4
22.	23P12OC	Round washer 12 galv., 82005	1
23.	23NS10OC	Self-locking nut M10 galv., 82175 8 82175 8	4
24.	23NS8OC	Self-locking nut M8 galv., 82175 8 82175 8	2
25.	23N12OC	Nut M12 galv., 82144 5	3
26.	23K8/50	Spring pin 8 x 50 DIN 1481	2
27.	POD-ELZ-000344	Spring pin 5 x 30 DIN 1481	1

## 2. MAIN FRAME, PART 2

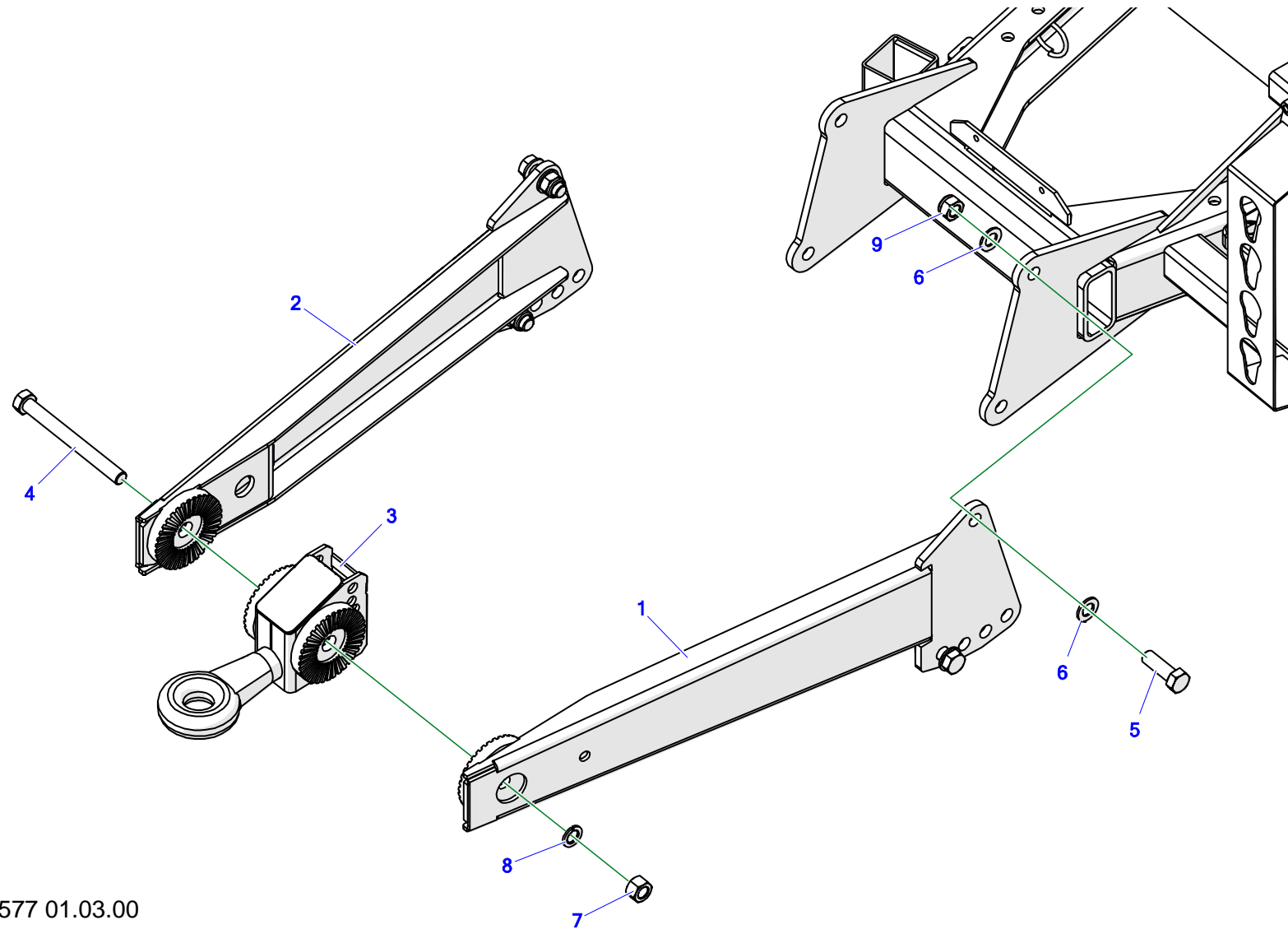




**Tabela 2. Main frame, part 2**

<b>No.</b>	<b>No.</b>	<b>Part or assembly name</b>	<b>Volume</b>
1.	Z-577 01.00.43	Cutter lever bumper	1
2.	Z-577 02.00.10	Bumper tie rod cable	1
3.	23S1.5/20/160	Tension spring 1.5/20/160/79.5 galv., (maz-2048)	1
4.	23ZL	Cable clamp 5mm	1
5.	23S8/35OC 8.8	Bolt 8 x 35 galv., 8.8 82105 82105	2
6.	23P8OOC	Round washer 8 galv., 82005 82005	4
7.	23NS8OC	Self-locking nut M8 galv., 82175 8 82175 8	2

**3. DRAWBAR**



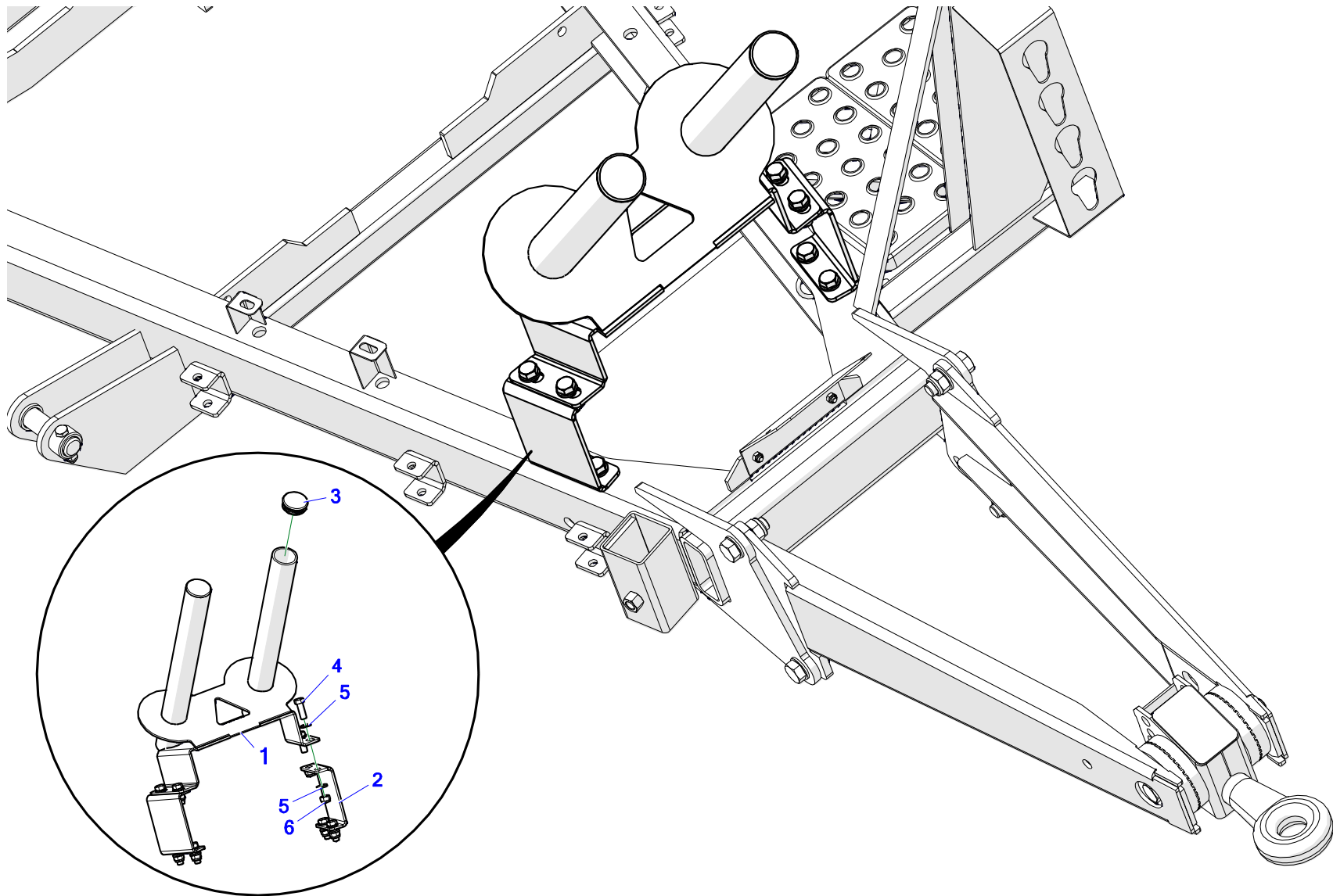
Z-577 01.03.00

### Tabela 3. Drawbar

Drawbar mount - Z-577 01.03.00

No.	No.	Part or assembly name	Volume
1.	Z-577 01.03.30	Left hitch arm, assy.	1
2.	Z-577 01.03.40	Right hitch arm, assy.	1
3.	Z-577 01.03.50	Hitch, welded	1
4.	POD-ELZ-000924	bolt 20 x 200 galv., 10.9 82101	1
5.	23S20/60 8.8 OC	Bolt 20 x 60 galv., 8.8 82105 82105	4
6.	23P20OOC	Round washer 20 galv., 82005 82005	8
7.	23N M20 CL.8 DIN934OC	Nut M20 galv., 8.8 DIN934 8 DIN934 8	1
8.	23P20SP	Spring washer, 20.5 galv., 82008 82008	1
9.	23NS20OC 82.175	Self-locking nut M20 galv., 82175 8 82175 8	4

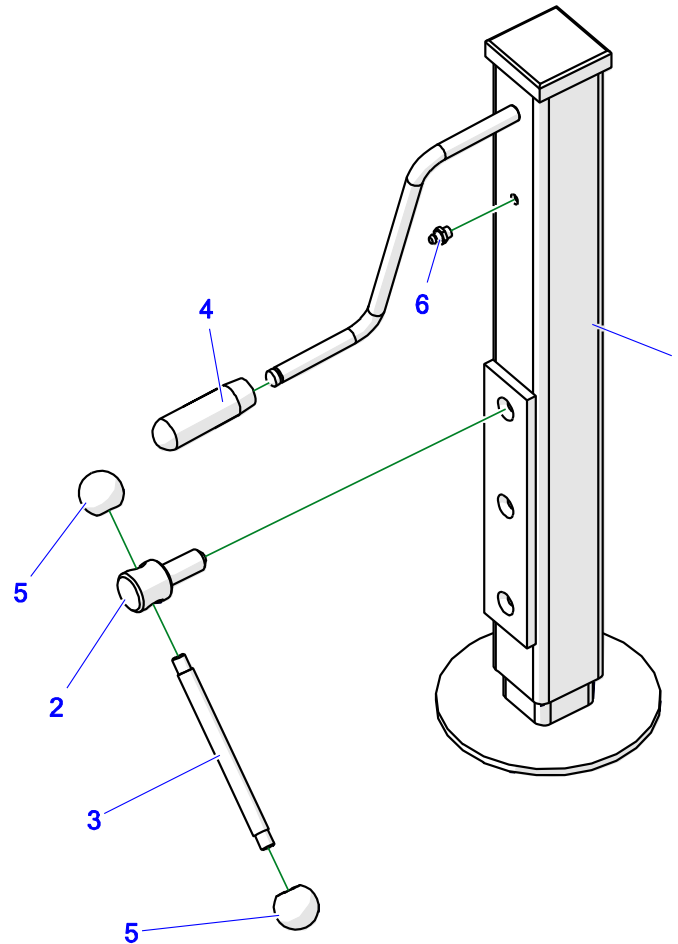
#### 4. FILM BRACKET



**Tabela 4. Film bracket**

<b>No.</b>	<b>No.</b>	<b>Part or assembly name</b>	<b>Volume</b>
1.	Z577-10 01.10.00	Welded film bracket.	1
2.	Z577-10 01.00.03	Hopper spacer	2
3.	POD-TSZ-000230	Round end cap, dia. 70 (Es-465601)	2
4.	23S16/45OC	Screw 16 x 45 galv., 8.8 82105 82105	8
5.	23P16OOC	Round washer 16 galv., 82005 82005	16
6.	23NS16OC	Self-locking nut M16 galv., 82175 8 82175 8	8

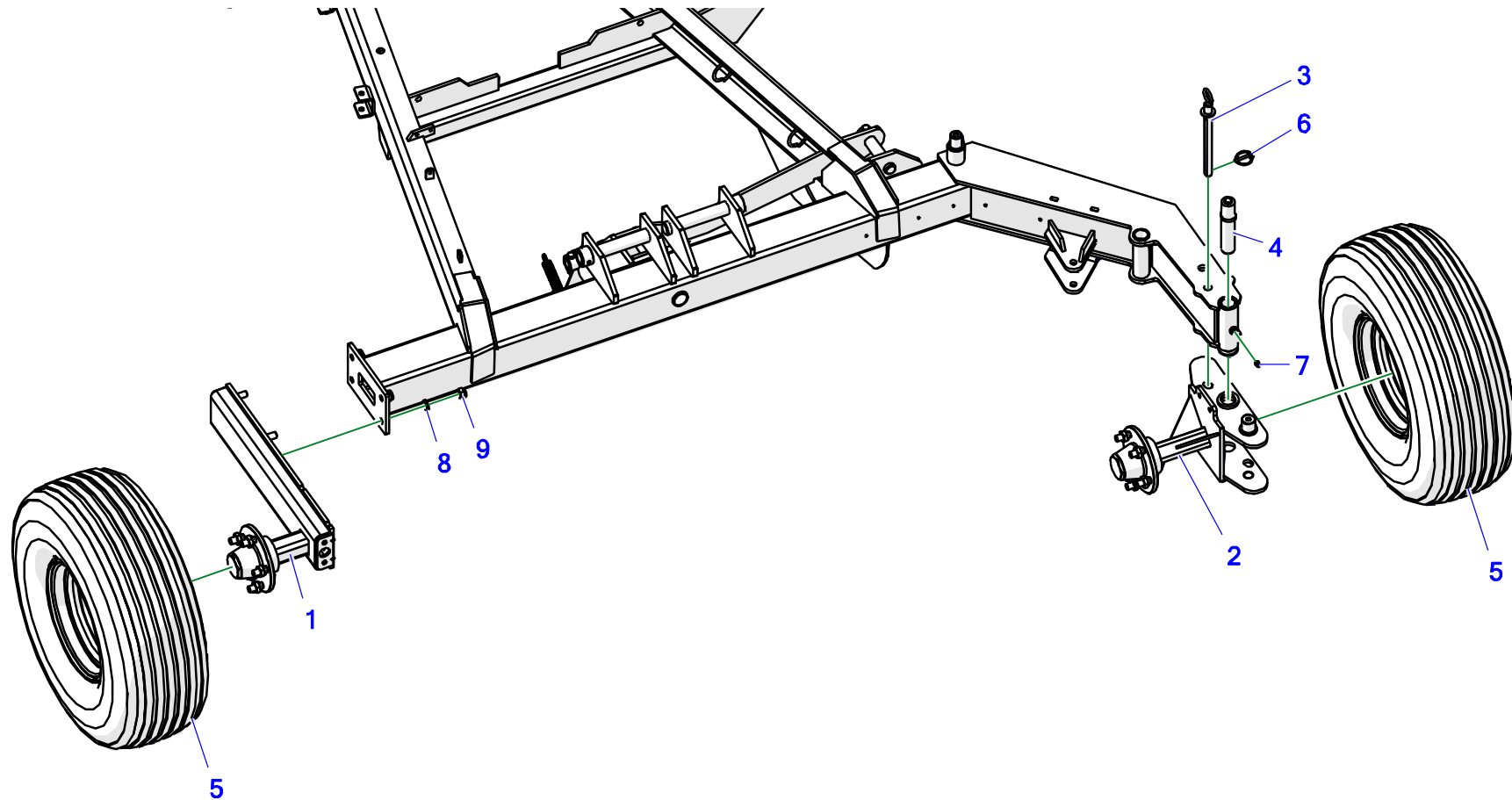
## 5. PARKING SUPPORT



**Tabela 5. Parking jack**

No.	No.	Part or assembly name	Volume
1.	Z577-10 01.02.00	support jack	1
2.	Z577-10 01.02.12	Hand wheel bolt	1
3.	Z577-10 01.02.11	Hand wheel rod	1
4.	25RP	Feeder handle	1
5.	28B32 M10	Knob B32 M10 No. 462099	2
6.	23SM8	Lubricating nipple M8 x 1.0 straight	1

## 6. WHEEL AXLES

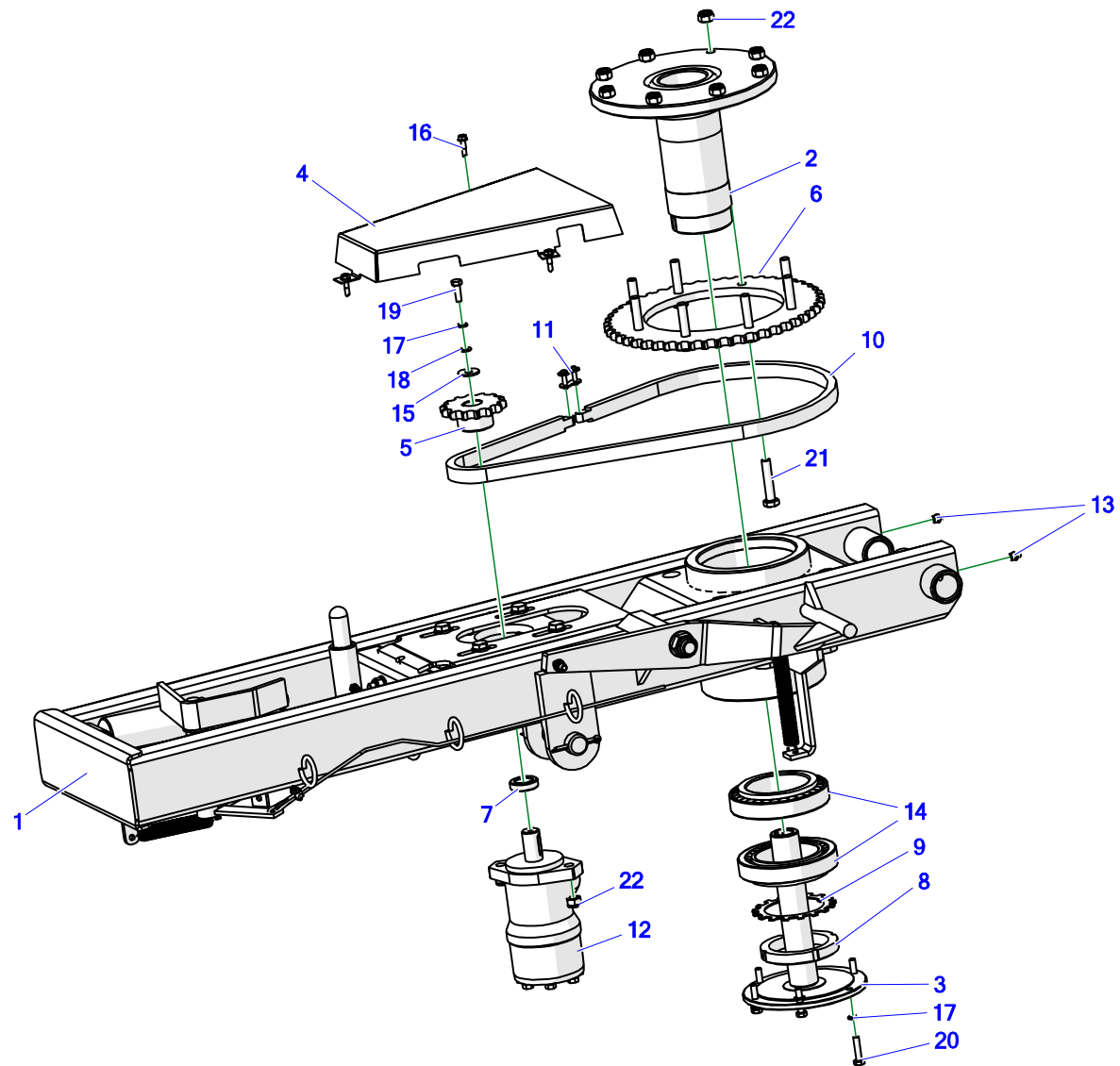




**Tabela 6. Wheel axles**

No.	No.	Part or assembly name	Volume
1.	Z577-10 01.05.00	Wheel support	1
2.	Z577-10 01.06.00	Rotation axle shaft	1
3.	Z577-10 00.03.00	Wheel protection assy.	1
4.	Z577-10 01.13.00	Wheel pin, complete	1
5.	25K10.0/80-12 10PR	Wheel 10.0/80-12 10PR	2
6.	23PR6	cotter pin with a ring 6	1
7.	23SM10/1	Lubricating nipple M10 x 1.0 straight	1
8.	23P16OOC	Round washer 16 galv., 82005 82005	4
9.	23NS16OC	Self-locking nut M16 galv., 82175 8 82175 8	4

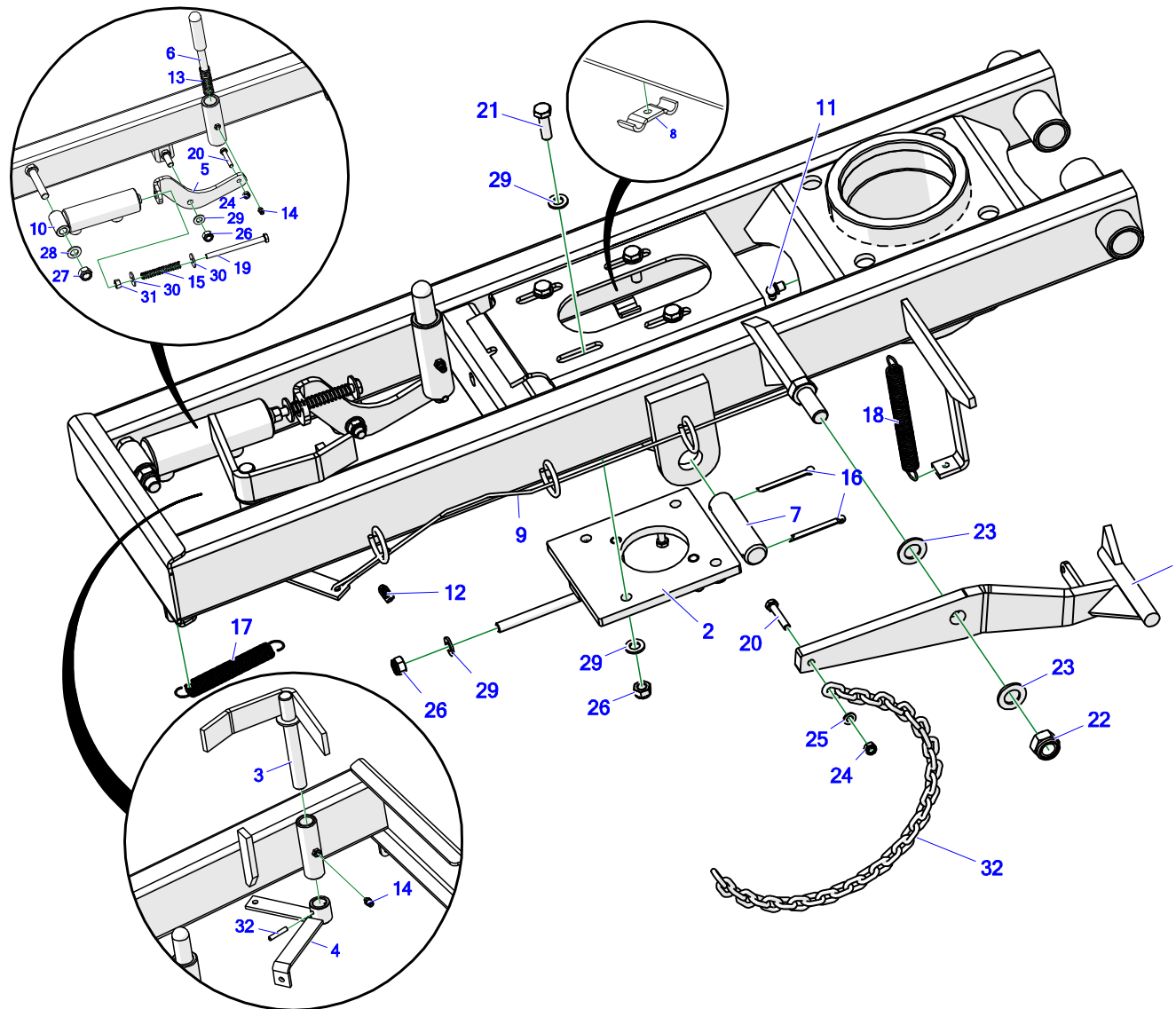
## 7. MOVABLE FRAME – PART 1



**Tabela 7. Movable frame**

No.	No.	Part or assembly name	Volume
1.	Z-577 02.01.00	Movable frame, welded	1
2.	Z-237 00.15.00.1	Journal, complete	1
3.	Z-237 00.16.00	Axle, complete	1
4.	Z-577 02.00.22.1	Chain transmission guard	1
5.	Z-237 00.00.12	Sprocket Z-14	1
6.	Z-237 00.00.14.1	Sprocket Z-50	1
7.	Z-237 00.00.11	Engine spacer	1
8.	25L17KM	KM17(N) bearing nut	1
9.	25PL	Bearing washer MB17	1
10.	25LO12B1 73OGN	Chain 12B1 73 links (1.45 m)	1
11.	25LO12P	Chain link 12B1 R-1 3/4"	1
12.	24S200	OMR 200 (BMR) hydraulic motor	1
13.	23SM10/1	Lubricating nipple M10 x 1.0 straight	2
14.	25L32018	32018 bearing	2
15.	23P10 OC030	Round washer 10 galv., coated 82030 82030	1
16.	28W6,3X25 OC	Screw, self-drilling, 6.3 x 25 galv., hex head	3
17.	23P8SPOC	Spring washer 8.2 galv., 82008 82008	7
18.	23P8OOC	Round washer 8 galv., 82005 82005	1
19.	23S8/25OC8.8	Bolt 8 x 25 galv., 8.8 82105 82105	1
20.	23S8/35OC 8.8	Bolt 8 x 35 galv., 8.8 82105 82105	6
21.	23S12/60OC 8.8	Bolt 12 x 60 galv., 8.8 82101 82101	8
22.	23NS12OC	Self-locking nut M12 galv., 82175 8 82175 8	10

## 8. MOVABLE FRAME – PART 2

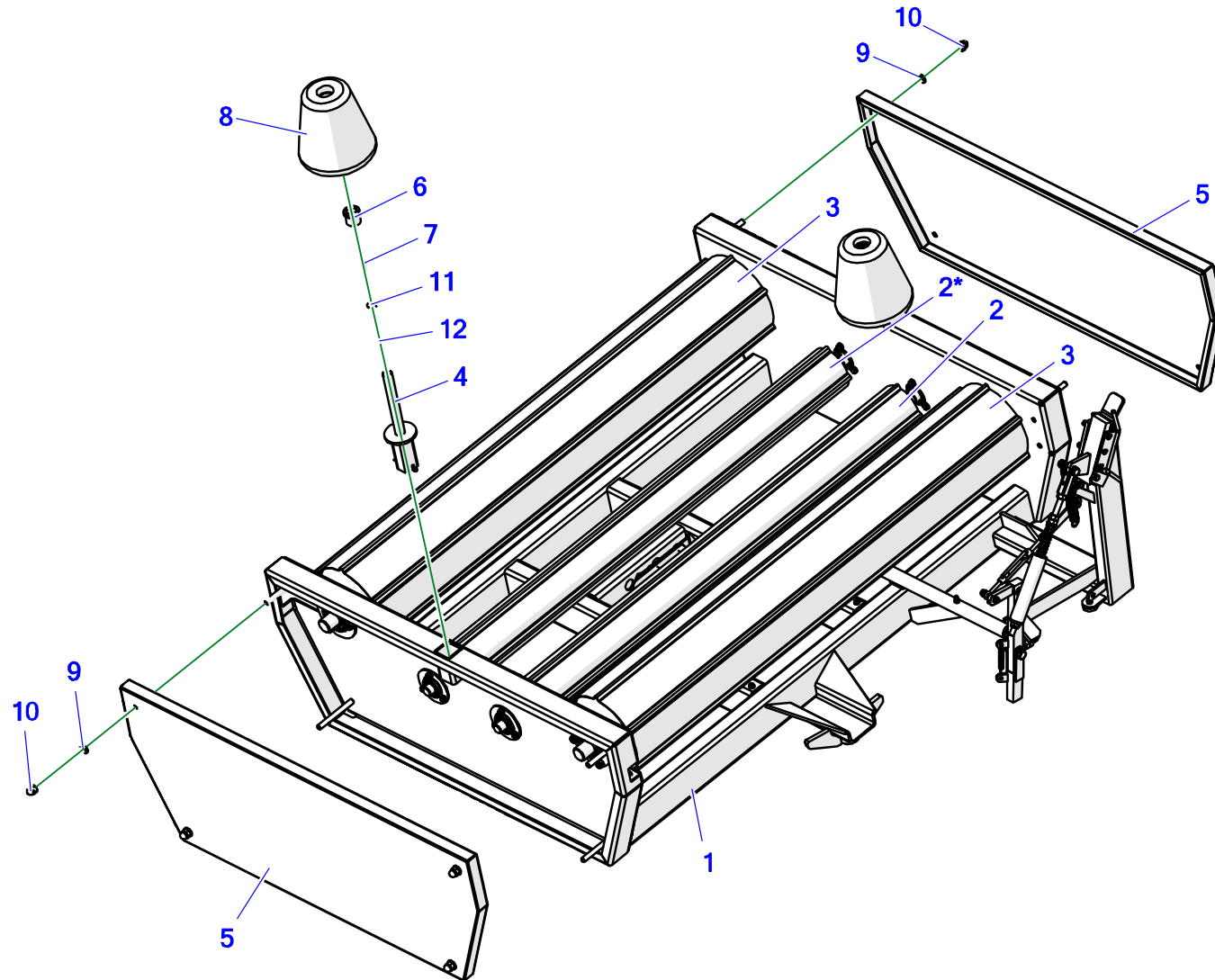


**Tabela 8. Movable frame – part 2**

No.	No.	Part or assembly name	Volume
1.	Z-577 03.04.00	Lever assy.	1
2.	Z-577 00.10.00	Engine support	1
3.	Z-577 00.04.00	Lever I	1
4.	Z-577 00.05.00	Lever II	1
5.	Z-237 00.00.06	Lever III	1
6.	Z-237 00.00.07	Lock pin	1
7.	Z-577 00.00.24	Actuator mounting pin II	1
8.	Z-593 01.00.11	Hose clamp	1
9.	Z-577 02.00.10	Bumper tie rod cable	1
10.	24SCJ2F40/22/65	Actuator 40/22/65*L-180	1
11.	23SM10KAT90	lubricating nipple M10 x 1.0 90 angle	1
12.	23ZL	Cable clamp 5 mm	1
13.	23SPS2/17/75	Compression spring 2.5/22/75/10 galv., (maz-2047)	1
14.	23SM	Lubricating nipple M6 x 1.0 straight	2
15.	23S22	Compression spring 2/15/85/18.5 galv., (maz-2046)	1
16.	23Z6/63	Cotter pin 6.3 x 63 galv.,	2
17.	23S1.5/20/160	Tension spring 1.5/20/160/79.5 galv., (maz-2048)	1
18.	23SP2/20/200	Tension spring 2/20/200/69.5 galv., (maz-2050)	1
19.	23S10/130OC	Bolt 10 x 130 galv., 8.8 82101 82101	1

No.	No.	Part or assembly name	Volume
20.	23S8/45OC 8.8	Bolt 8 x 45 galv., 8.8 82105 82105	2
21.	23S12/40OC	Bolt 12 x 40 galv., 8.8 82101 82101	4
22.	23NS20OC 82.175	Self-locking nut M20 galv., 82175 8 82175 8	1
23.	23P20OOC	Round washer 20 galv., 82005 82005	2
24.	23NS8OC	Self-locking nut M8 galv., 82175 8 82175 8	2
25.	23P8OOC	Round washer 8 galv., 82005 82005	1
26.	23NS12OC	Self-locking nut M12 galv., 82175 8 82175 8	6
27.	23NS16OC	Self-locking nut M16 galv., 82175 8 82175 8	1
28.	23P16OOC	Round washer 16 galv., 82005 82005	1
29.	23P12OC	Round washer 12 galv., 82005	10
30.	23P10 OC030	Round washer 10 galv., coated 82030 82030	2
31.	23N10OC	Nut M10 galv., 82144 5 82144 5	1
32.	Z-577 02.00.09	Cutter lever chain	1

## 9. ROTARY FRAME – PART 1

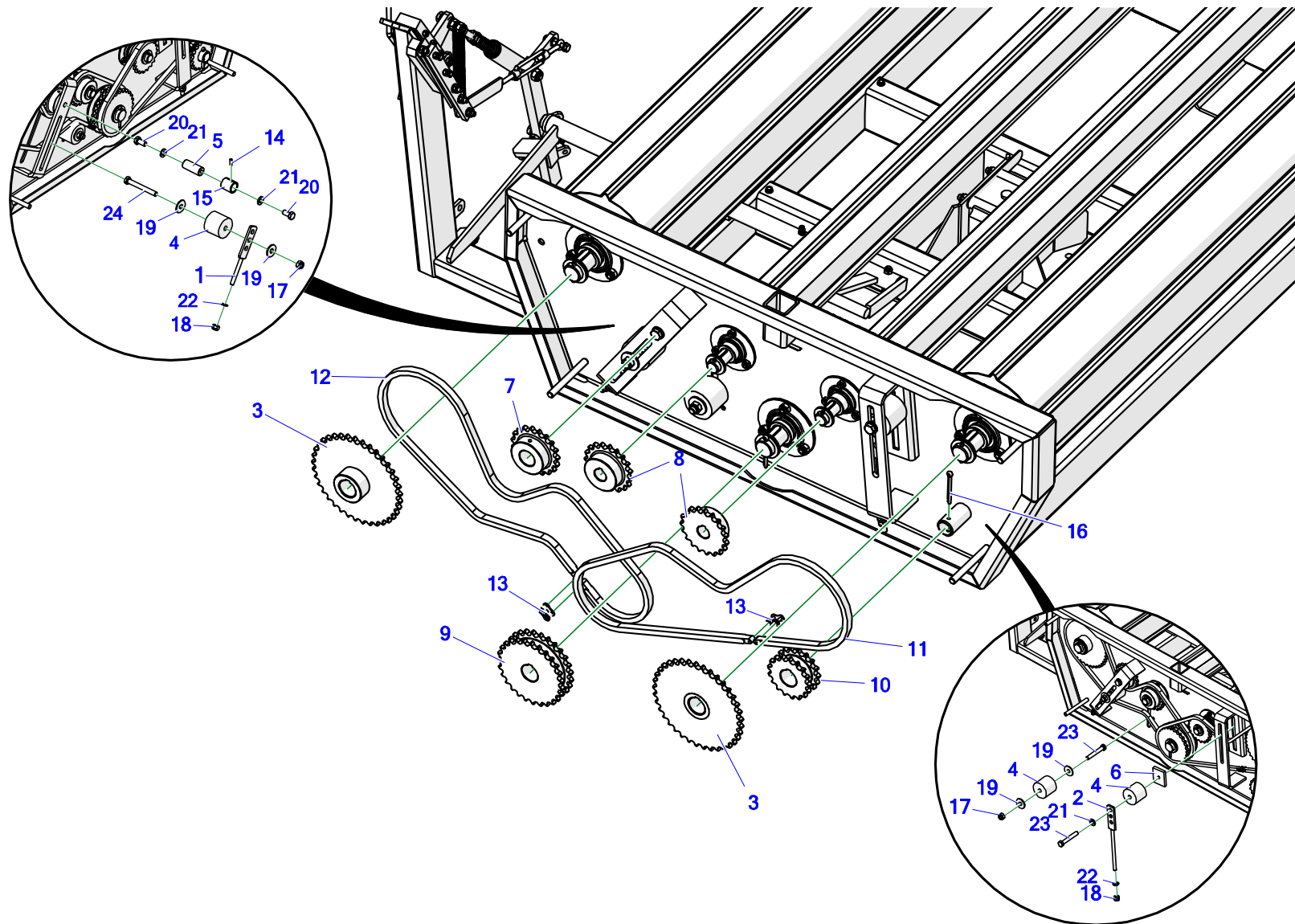


**Tabela 9. Rotary frame – part 1**

No.	No.	Part or assembly name	Volume
1.	Z-577 03.01.00	Welded frame	1
2.	Z-237 33.19.00	Thin shaft II, right	1
2*.	Z-237 33.19.00	Thin shaft II, left	1
3.	Z-237 33.20.00	Thick shaft I	2
4.	Z-237 05.01.00	Side wheel bracket	2
5.	Z-237 33.00.30	Side guard	2
6.	Z-237 05.00.04	Bevel wheel hub	2
7.	23S8/20OC 8.8	Bolt 8 x 20 galv., 8.8 82105 82105	2
8.	25KS	Bale wrapper cone wheel	2
9.	23P12OC	Round washer 12 galv., 82005	8
10.	23N12KOL	Acorn nut M12 galv., 82181 8 82181 8	8
11.	23P8OC 82.030	Round washer 8 galv., coated 82030	2
12.	23P8SPOC	Spring washer 8.2 galv., 82008 82008	2



## 10. ROTARY FRAME – PART 2

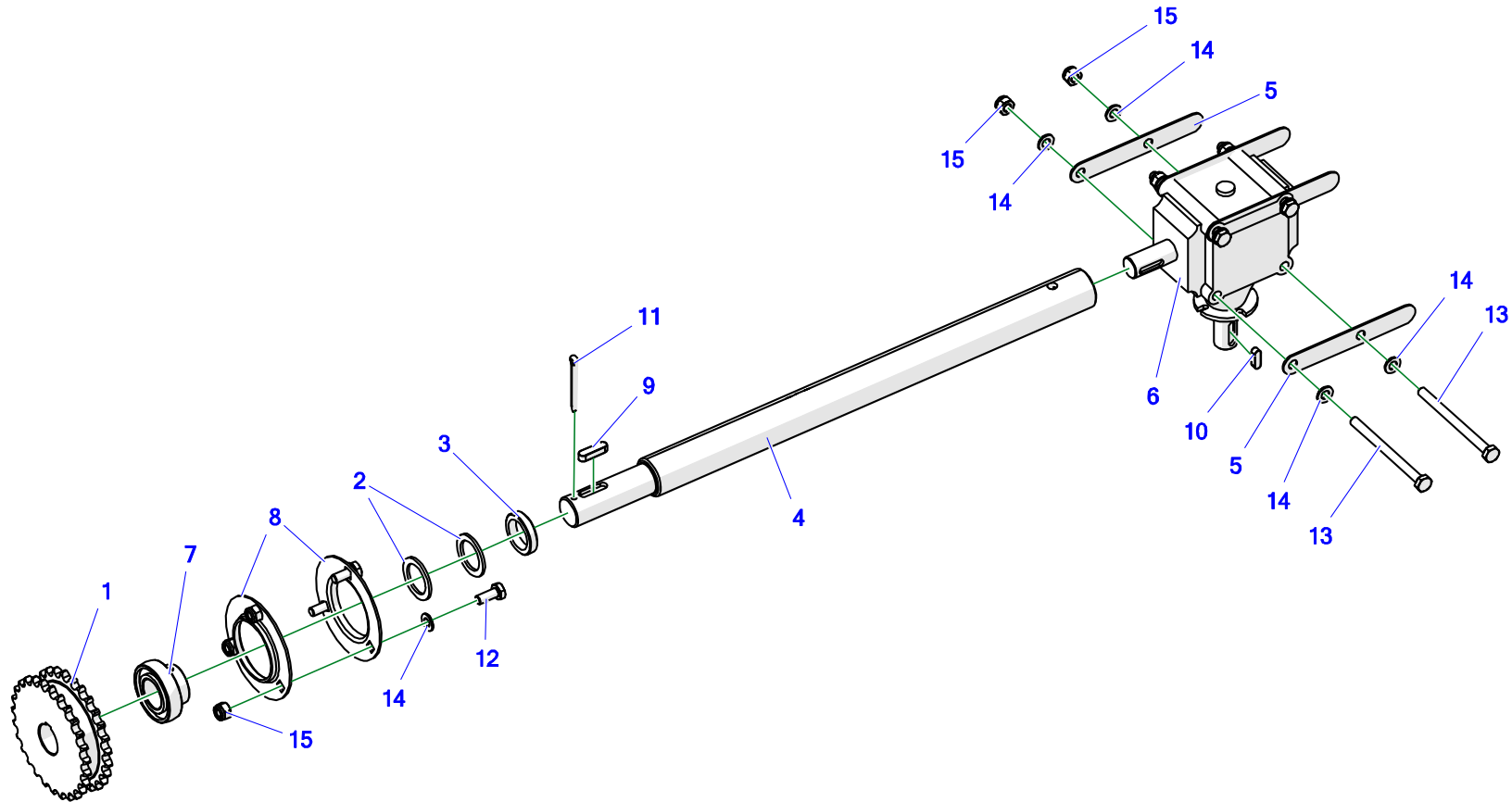


**Tabela 10. Rotary frame – part 2**

No.	No.	Part or assembly name	Volume
1.	Z-237 33.66.00	Tensioner I	1
2.	Z-237 33.64.00	Tensioner II	1
3.	Z-237 33.17.00.1	Sprocket Z-37	2
4.	Z-237 33.00.27	Chain tensioner I	3
5.	Z-237 33.00.10	Wheel axle Z-19	1
6.	Z-237 33.00.32	Threaded block M12	1
7.	Z-237 33.00.48	Sprocket Z-19	1
8.	Z-237 33.00.16.1	Sprocket Z-19	2
9.	Z-237 33.00.15.1	Sprocket Z-27	1
10.	Z-237 33.00.12	Sprocket Z-17	1
11.	25LO10B1 93OGN	Chain 10B1 93 links	1
12.	25LO10B1 99OGN.	Chain 10B1 99 links	1
13.	25LO10P	Chain link 10B1 R-1 5/8"	2
14.	POD-ELZ-000346	Resilient stud 6 x 20 DIN 1481	1
15.	25T25/32.6/35	Self-lubricating sleeve 25H7/32.6 x 35	1
16.	23Z6/63	Cotter pin 6.3 x 63 galv.,	1
17.	23NS12OC	Self-locking nut M12 galv., 82175 8 82175 8	2
18.	23NS10OC	Self-locking nut M10 galv., 82175 8 82175 8	2
19.	23P12OOC	Round washer 12 galv., coat. 82030	4

No.	No.	Part or assembly name	Volume
20.	23S12/25OC 8.8	Screw 12 x 25 galv., 8.8 82105 82105	2
21.	23P12OC	Round washer 12 galv., 82005	3
22.	23P10 82.005	Round washer 10 galv., 82005 82005	2
23.	23S12/80OC 8.8	Bolt 12 x 80 galv., 8.8 82101 82101	2
24.	23S12/100OC 8.8	Bolt 12 x 100 galv., 8.8 82101 82101	1

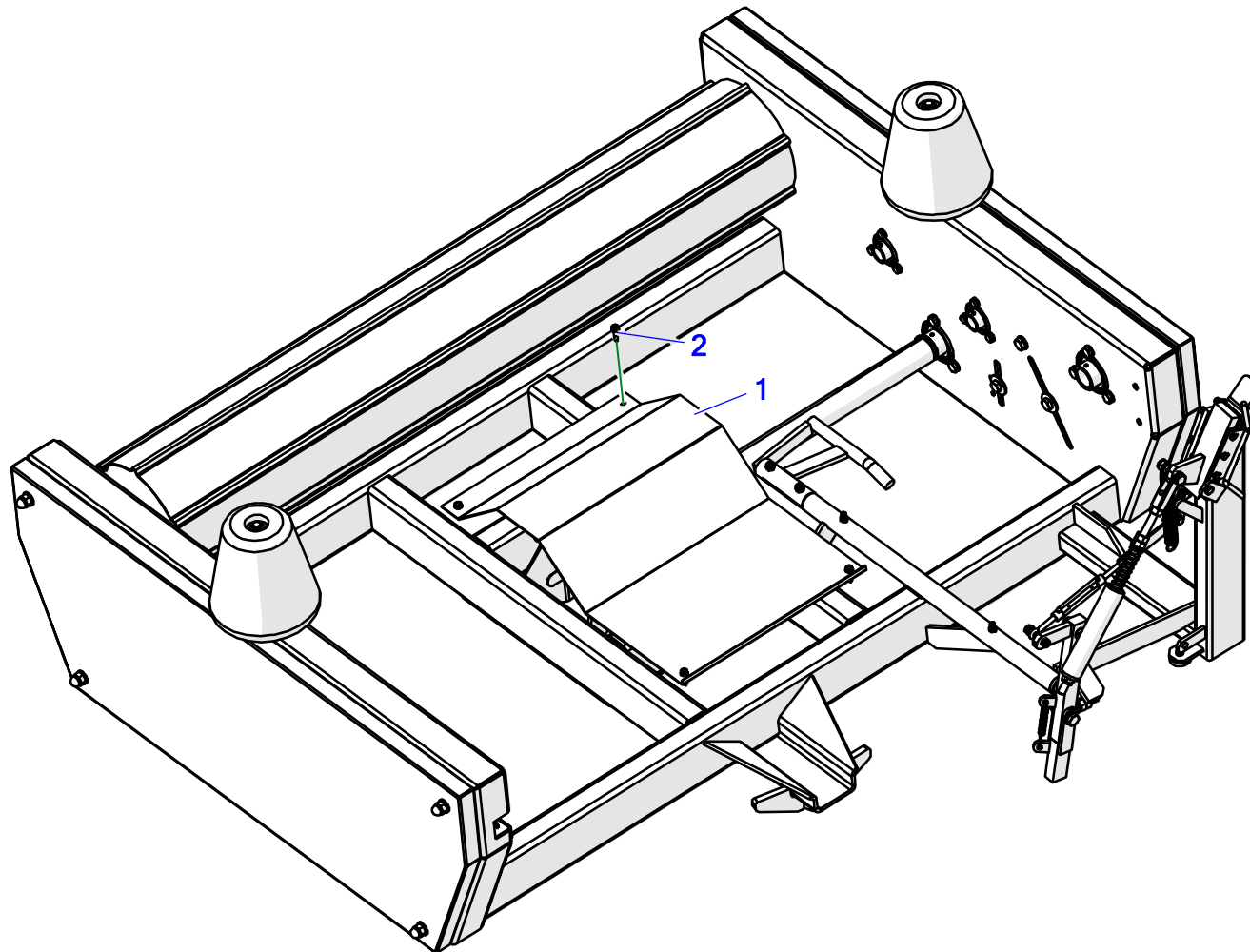
# 11. ROTARY FRAME – GEAR



**Tabela 11. Rotary frame – gear**

No.	No.	Part or assembly name	Volume
1.	Z-237 33.00.15.1	Sprocket Z-27	1
2.	Z-237 33.00.14	Washer I	2
3.	Z-237 33.00.13	Distance sleeve II	1
4.	Z-237 33.00.11.1	Wheel drive shaft Z-17	1
5.	Z-577 03.00.01	Gearbox spacer plate	4
6.	25PPS	Self-loading gearbox 005-03.OGGRO(MB30.01)	1
7.	25L207	Bearing FD207	1
8.	25OP207	Metal housing P-207	2
9.	23WP10/8/36	Groove 10 x 8 x 36	1
10.	23WP8/7/25	Key groove 8 x 7 x 25 DIN6885A DIN6885A	1
11.	23Z6/63	Cotter pin 6.3 x 63 galv.,	1
12.	23S10/25OC 8.8	Bolt 10 x 25 galv., 8.8 82105 82105	3
13.	23S10/130OC	Bolt 10 x 130 galv., 8.8 82101 82101	4
14.	23P10 82.005	Round washer 10 galv., 82005 82005	11
15.	23NS10OC	Self-locking nut M10 galv., 82175 8 82175 8	7

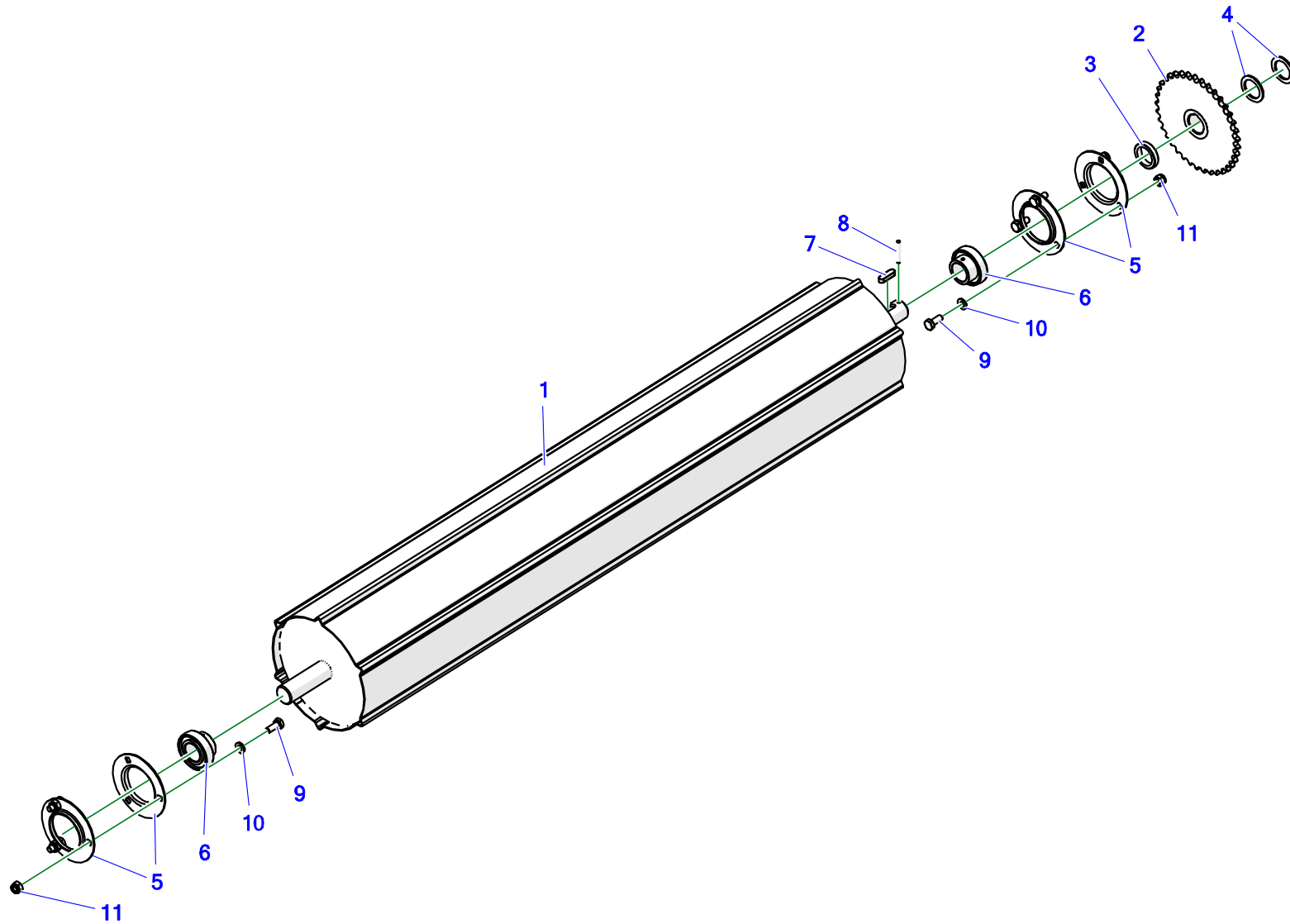
## 12. ROTARY FRAME – GEARBOX COVER



**Tabela 12. Rotary frame – gearbox cover**

<b>No.</b>	<b>No.</b>	<b>Part or assembly name</b>	<b>Volume</b>
1.	Z-237 33.00.31	Gear guard	1
2.	28W6,3X25 OC	Screw, self-drilling, 6.3 x 25 galv., hex head	4

### 13. ROTARY FRAME – THICK SHAFT I

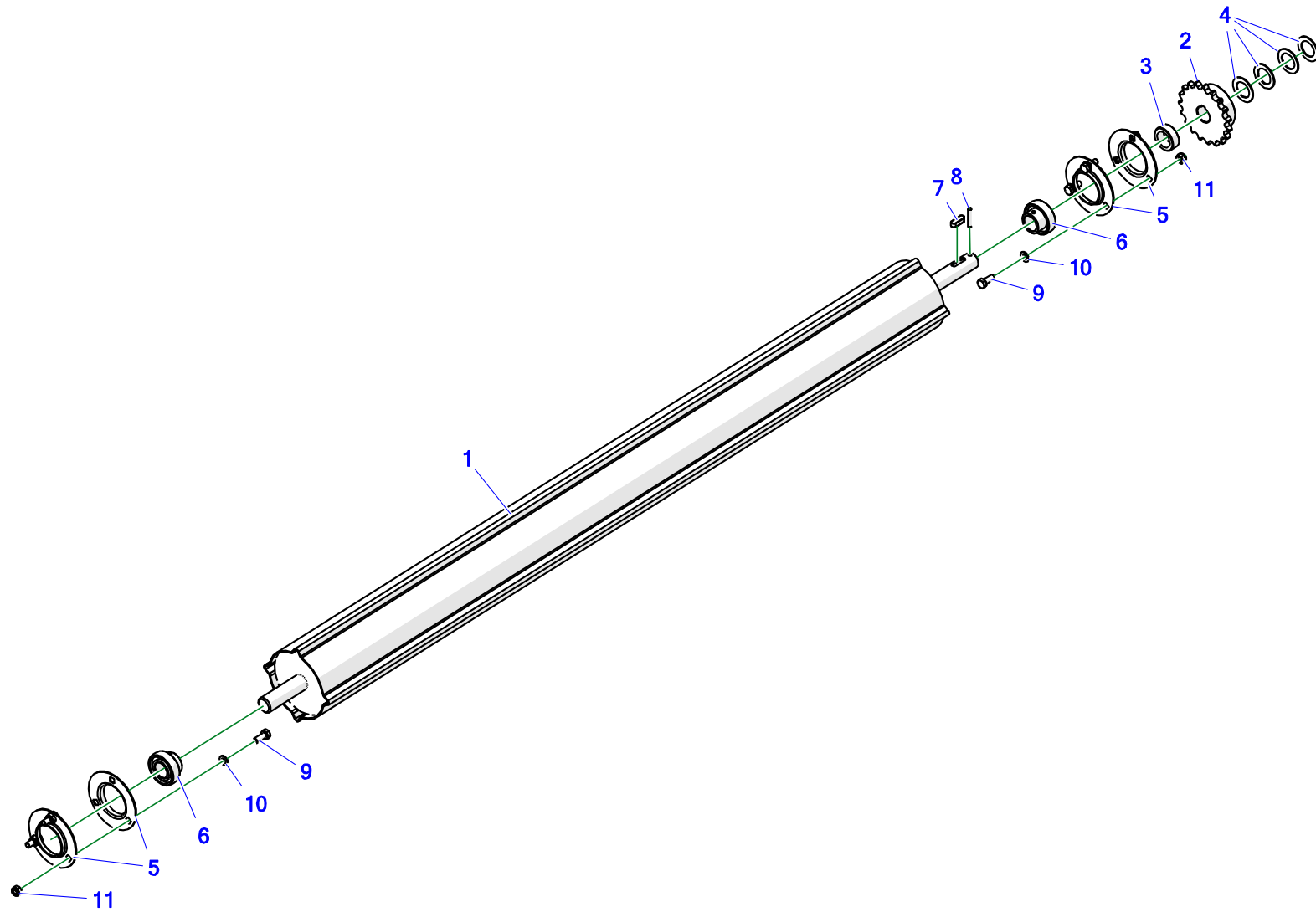




**Tabela 13. Rotary frame – thick shaft i**

No.	No.	Part or assembly name	Volume
1.	Z-237 33.20.00	Thick shaft I	1
2.	Z-237 33.17.00.1	Sprocket Z-37	1
3.	Z-237 33.00.13	Distance sleeve II	1
4.	Z-237 33.00.14	Washer I	2
5.	25OP207	Metal housing P-207	4
6.	25L207	Bearing FD207	2
7.	23WP10/8/36	Groove 10 x 8 x 36	1
8.	23K6/45	Spring pin 6 x 45 DIN 1481	1
9.	23S10/25OC 8.8	Bolt 10 x 25 galv., 8.8 82105 82105	6
10.	23P10 82.005	Round washer 10 galv., 82005 82005	6
11.	23NS10OC	Self-locking nut M10 galv., 82175 8 82175 8	6

**14. ROTARY FRAME – THIN SHAFT II**



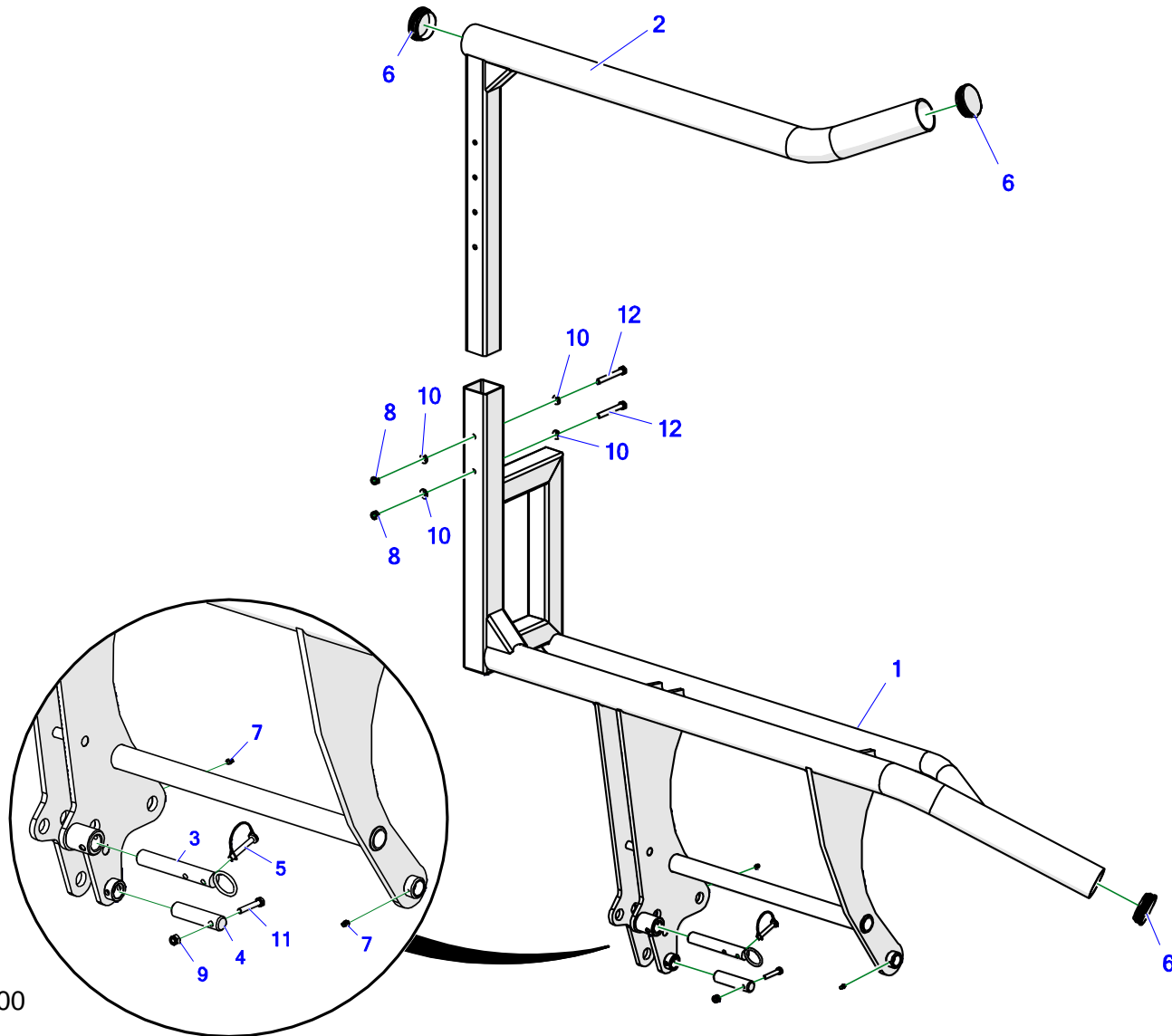
**Tabela 14. Rotary frame – thin shaft II**

No.	No.	Part or assembly name	Volume
1.	Z-237 33.19.00	Thin shaft II	1
2.	Z-237 33.00.16.1	Sprocket Z-19	1
3.	Z-237 33.00.24*	Distance sleeve IV	1
3.	Z-237 33.00.22**	Distance sleeve III	1
4.	Z-237 33.00.25	Washer V	4
5.	25OP205	Metal housing P-205	4
6.	25L205	Bearing FD205	2
7.	23WP8/7/25	Key groove 8 x 7 x 25 DIN6885A DIN6885A	1
8.	23K6/32	Resilient stud 6 x 32 DIN 1481	1
9.	23S8/20OC 8.8	Bolt 8 x 20 galv., 8.8 82105 82105	6
10.	23P8OOC	Round washer 8 galv., 82005 82005	6
11.	23NS8OC	Self-locking nut M8 galv., 82175 8 82175 8	6

\* The spacer sleeve with the index Z-237 33.00.22 is used for the left-hand thin shaft II – see Table 9 item 2 and 2\*

\*\* The spacer sleeve with the index Z-237 33.00.24 is used for the right-hand thin shaft II – see Table 9 item 2 and 2\*

**15. LOADING ARM**



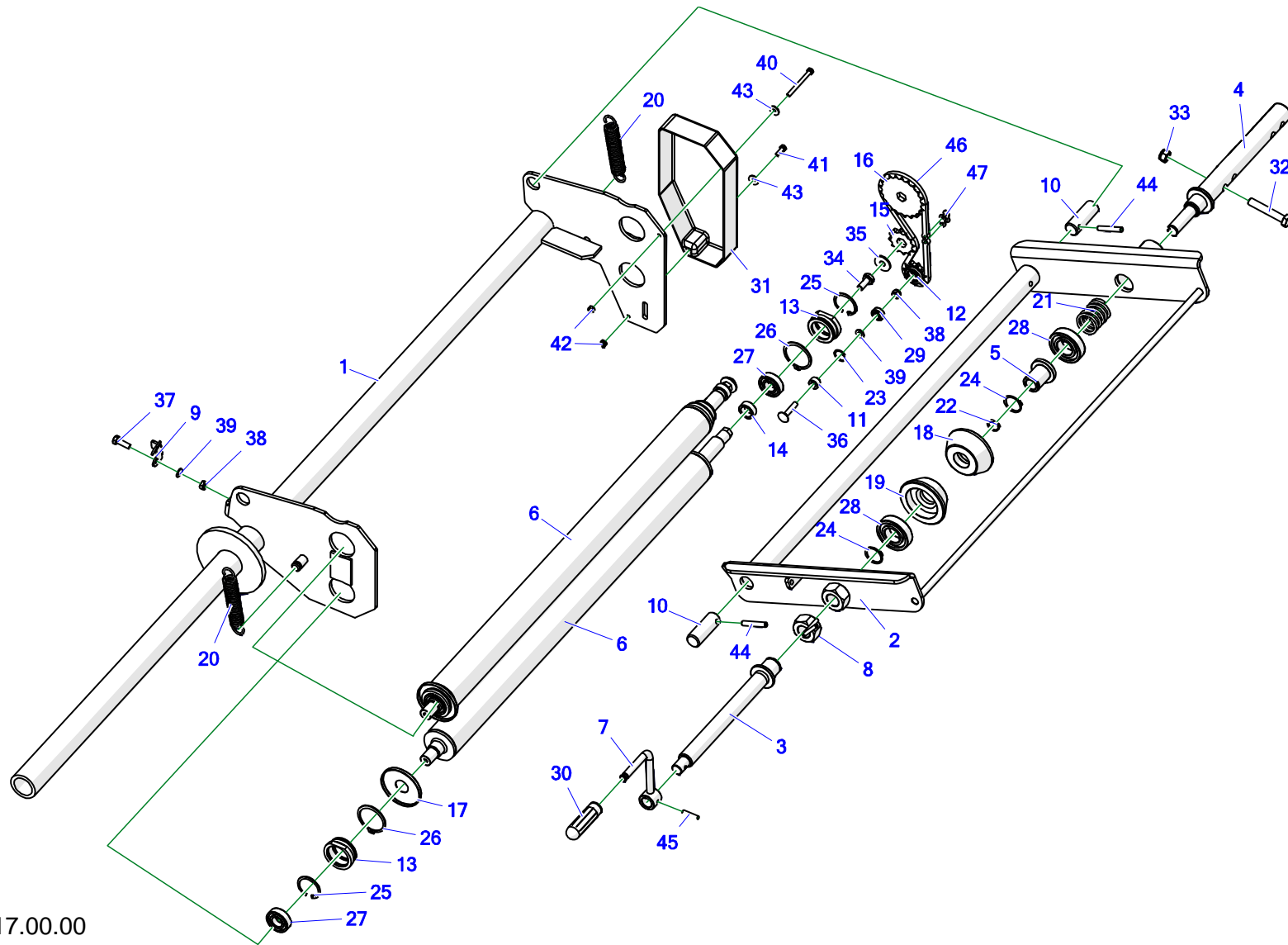
Z577-10 04.00.00

### Tabela 15. Loading arm

Loading arm mount. - Z577-10 04.00.00

No.	No.	Part or assembly name	Volume
1.	Z577-10 04.02.00	Loading arm I welded.	1
2.	Z-577 04.03.00	Tube II, assy.	1
3.	Z-577 00.28.00	Loading frame lock pin	1
4.	Z-577 00.00.26	Actuator mounting pin III to the frame annex.	1
5.	POD-ELZ-000543	Tubular cotter pin 10x60 A-9.8 C-70	1
6.	POD-TSZ-000246	Round stopper, int. 88.9 mm black (Es-085088969903)	3
7.	23SM	Lubricating nipple M6 x 1.0 straight	2
8.	23NS12OC	Self-locking nut M12 galv., 82175 8 82175 8	2
9.	23NS10OC	Self-locking nut M10 galv., 82175 8 82175 8	1
10.	23P12OC	Round washer 12 galv., 82005	4
11.	23S10/60OC 8.8	Bolt 10 x 60 galv. 8.8 82101 82101	1
12.	23S12/100OC 8.8	Bolt 12 x 100 galv., 8.8 82101 82101	2

**16. REVERSE FILM FEEDER**



Z-577 17.00.00

**Tabela 16. Reverse film feeder**

Reverse film feeder assy. - Z-577 17.00.00

No.	No.	Part or assembly name	Volume
1.	Z-577 17.01.00.1	Mount bracket	1
2.	Z593-1E 07.05.00.2	Foil bracket set	1
3.	Z593-1E 07.06.00.1	Lower bracket, assy.	1
4.	Z593-1E 07.07.00.1	Upper bracket, assy.	1
5.	Z-560 02.00.31.1	Bushing	1
6.	Z-577 17.08.00	Pressure roller	2
7.	Z-560 02.37.00.1	Handle set	1
8.	Z-560 02.38.00	Backnut M27	1
9.	Z-560 02.00.04	Lock	1
10.	Z-560 02.00.07	Foil bracket shaft	2
11.	Z-560 02.00.08	Distance sleeve II	1
12.	Z-560 02.00.09	Chain wheel Z-11	1
13.	Z-560 02.00.25.1	Shaft mounting	4
14.	Z-560 02.00.26	Distance sleeve III	2
15.	Z-560 02.00.30	Sprocket Z-12	1
16.	Z-560 02.00.32	Sprocket Z-21	1
17.	Z-560 02.00.36	Bearing guard	2
18.	Z-560 02.00.41.1	Film mount, upper	1

No.	No.	Part or assembly name	Volume
19.	Z-593 17.00.02	Pressure cone II	1
20.	23SPN3/23/135 MAZ1771/1	Tension spring 3/23/136/34 galv., (maz-1771/B-1)	2
21.	23S4/32/50	Compression spring 4/40/50/7 galv., (maz-2401)	1
22.	23SZ20	Circlip Z20	1
23.	23SW22	Circlip W22	1
24.	23SZ30	Circlip Z30	2
25.	23SW42	Circlip W42	4
26.	23SZ50	Circlip Z50	4
27.	25L6004	Bearing 6004 2RS	4
28.	25L6206	Bearing 6206 2RS	2
29.	25L608 2RS	Bearing 608 2RS	1
30.	25RP	Feeder handle	1
31.	POD-TSZ-000033	Tensioner guard ABS Z577 Z560	1
32.	23S12/70OC 8.8	Bolt 12 x 70 galv., 8.8 82101 82101	1
33.	23NS12OC	Self-locking nut M12 galv., 82175 8 82175 8	1
34.	23S10/25OC 8.8	Bolt 10 x 25 galv., 8.8 82105 82105	2
35.	23P10 OC030	Round washer 10 galv., coated 82030 82030	2
36.	23S8/40P	Carriage bolt 8 x 40 galv., 8.8 82406 82406	1
37.	23S8/25OC8.8	Bolt 8 x 25 galv., 8.8 82105 82105	1



No.	No.	Part or assembly name	Volume
38.	23NS8OC	Self-locking nut M8 galv., 82175 8 82175 8	2
39.	23P8OOC	Round washer 8 galv., 82005 82005	2
40.	23S6/70 105	Bolt 6 x 70 galv. 8.8 82101 82101 8.8	1
41.	23S6/20	Bolt 6 x 20 galv., 8.8 82105 82105 8.8	1
42.	23NS6OC	Self-locking nut M6 galv., 82175 8 82175 8	2
43.	23P6OC030	Round washer 6 galv., coated 82030	2
44.	23K8/50	Spring pin 8 x 50 DIN 1481	2
45.	23K6/30	Spring pin 6 x 30 DIN 1481	1
46.	25LO08B1 43OGN	Chain 08B1 43 links	1
47.	25LO08P	Chain link 08B1 R-1 1/2"	1



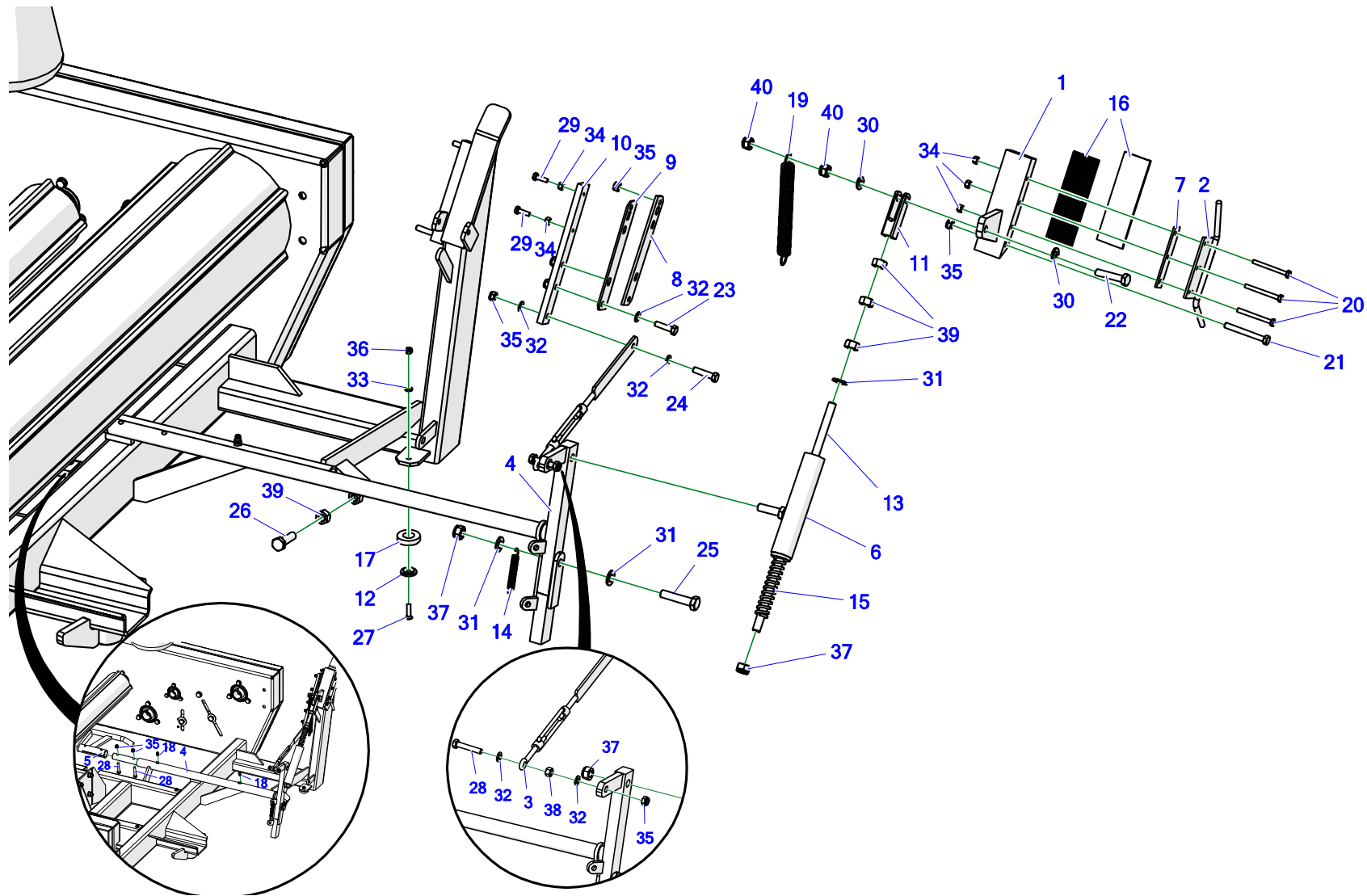
**Tabela 17. Bale tipper**

Bale tipper for the wrapper – Z577-0U

No.	No.	Part or assembly name	Volume
1.	Z-577 05.01.00	Bale vertical positioning arm	1
2.	Z-577 05.01.600	Backstay	1
3.	Z-577 05.02.00.1	Attachment frame	1
4.	Z-577 05.03.00	Slider	1
5.	Z-577 05.03.500	Lock pin, assy.	1
6.	Z-577 05.04.010	Support complete	1
7.	Z-577 05.01.011	Tube	1
8.	Z-577 05.01.012	Shaft	1
9.	Z-577 05.01.013	Shaft washer assy.	6
10.	Z-577 05.01.72	Cotter pin	1
11.	Z-577 05.03.80	Lock	1
12.	Z-577 05.02.60	Clamp	2
13.	Z-577 05.02.70	Tipper fixing clamp	2
14.	Z-577 05.04.04	Bevel wheel hub	1
15.	Z-577 05.04.05	Bevel wheel hub II	1
16.	Z-577 05.03.70	Pin	1
17.	POD-SPR-000055	Compression spring 8/40/125/15.5 galv., (maz-4792) (KIG)	1

No.	No.	Part or assembly name	Volume
18.	23ZRFI4	Elastic single cotter pin 4 (R-letter shaped, single)	1
19.	23SM	Lubricating nipple M6 x 1.0 straight	2
20.	POD-ELZ-000346	Resilient stud 6 x 20 DIN 1481	1
21.	23K6/32	Resilient stud 6 x 32 DIN 1481	1
22.	25KSO	Bevel wheel of the vertical bale drop-off gear Z-577	1
23.	23S16/140OC 8.8	Bolt 16 x 140 galv., 8.8 82101 82101	1
24.	23S16/110OC 8.8	Bolt 16 x 110 galv., 8.8 82101 82101	1
25.	23S8/50OC	Bolt 8 x 50 galv., 8.8 82101 82101	1
26.	23S16/30OC 5.8-B	Screw 16 x 30 galv., 8.8 82105 82105	2
27.	23P16OOC	Round washer 16 galv., 82005 82005	2
28.	23P12OC	Round washer 12 galv., 82005	8
29.	23P10 OC030	Round washer 10 galv., coated 82030 82030	1
30.	23P8OOC	Round washer 8 galv., 82005 82005	1
31.	23P8SPOC	Spring washer 8.2 galv., 82008 82008	1
32.	23S8/25OC8.8	Bolt 8 x 25 galv., 8.8 82105 82105	1
33.	23NS16OC	Self-locking nut M16 galv., 82175 8 82175 8	2
34.	23NS8OC	Self-locking nut M8 galv., 82175 8 82175 8	1
35.	23NS12OC	Self-locking nut M12 galv., 82175 8 82175 8	8
36.	25L6206	Bearing 6206 2RS	2

## 18. MECHANICAL FILM CUTTER

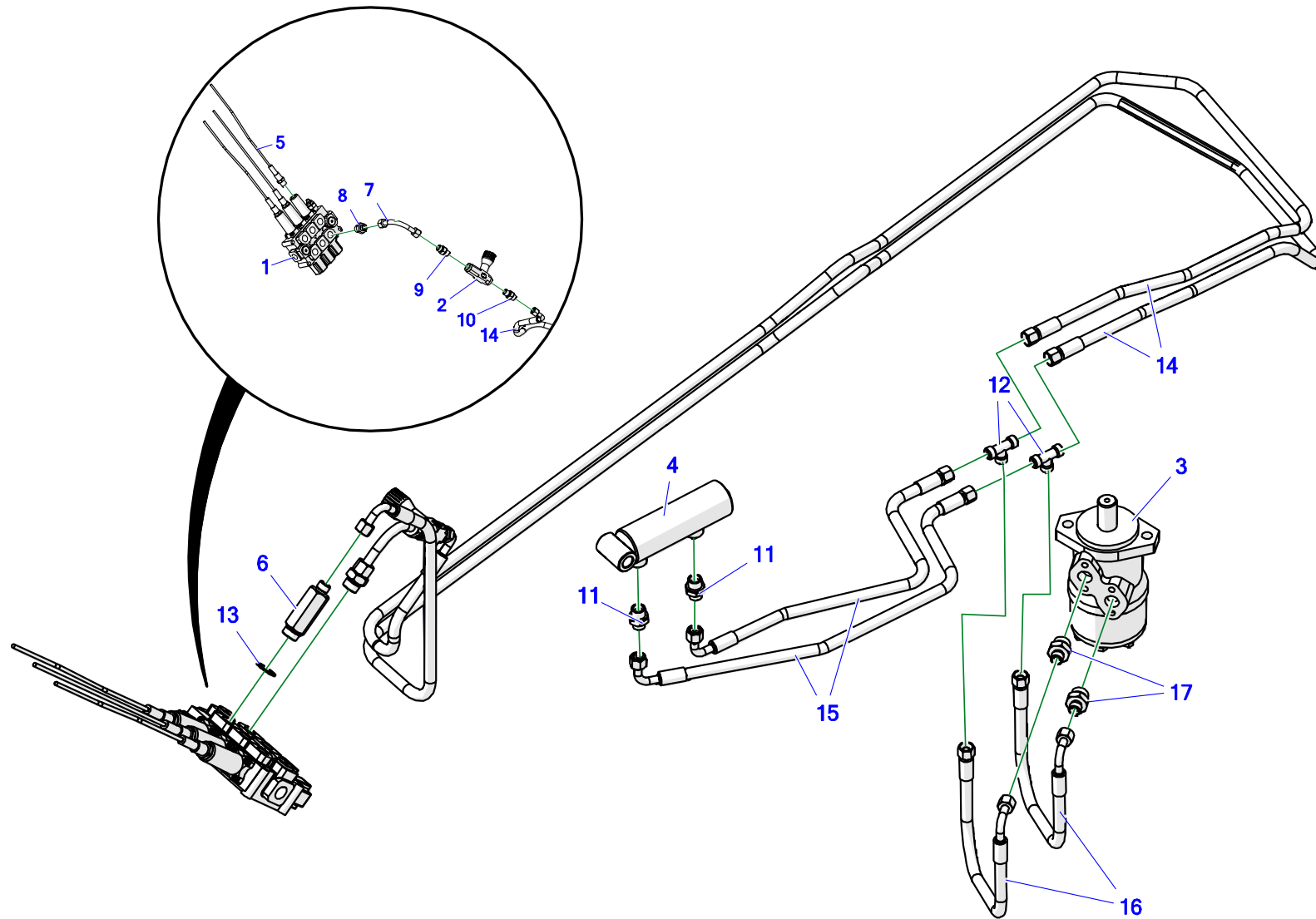


**Tabela 18. Mechanical film cutter**

No.	No.	Part or assembly name	Volume
1.	Z-577 03.17.30	Clamp, complete	1
2.	Z-577 03.17.80	Initial pressure element	1
3.	Z-577 03.17.06	Tie-rod	1
4.	Z-577 03.65.00	Brace assy.	1
5.	Z-577 03.06.00	Cutter lever	1
6.	Z-237 33.03.100	Tube assy.	1
7.	Z-577 03.17.05	Spacer plate	1
8.	Z-577 03.17.52.2	Movable cutter	1
9.	Z-577 03.17.52.2	Movable cutter	1
10.	Z-577 03.17.51.1	Movable cutter holder	1
11.	Z-237 33.03.04	Fork end	1
12.	Z-552 00.00.02	Magnet washer	1
13.	Z-577 03.03.03	Special bolt	1
14.	23s1,5/10/80	tension spring 1.5/10/80/36 galv., (maz-2446)	1
15.	23SS3/22/230	Compression spring 3.5/22/260/32 galv., (maz-2049)	1
16.	POD-TSZ-000037 (45 x 145)	Corrugated rubber plate #4-(CSG-4/1200 narrow stomil corrugation) (45 x 145)	2
17.	25MG	Ferrite ring magnet 36 x 18 x 8/F30	1
18.	23SM	Lubricating nipple M6 x 1.0 straight	2
19.	23SP2/20/200	Tension spring 2/20/200/69.5 galv., (maz-2050)	1

No.	No.	Part or assembly name	Volume
20.	23S6/60OC 8.8	Bolt 6 x 60 galv., 8.8 82101 82101 8,8	3
21.	23S8/70OC	Bolt 8 x 70 galv., 8.8 82101 82101	1
22.	POD-ELZ-000051-1	Bolt 10 x 50 galv., 8.8 82101	1
23.	23S8/30OC 8.8	Bolt 8 x 30 galv., 8.8 82105 82105	1
24.	23S8/35OC 8.8	Bolt 8 x 35 galv., 8.8 82105 82105	1
25.	23S12/55OC	Bolt 12 x 55 galv., 8.8 82101 82101	1
26.	23S12/45OC	Bolt 12 x 45 galv., 8.8 82105 82105	1
27.	23W6/25OC	Screw, cheese head 6 x 25 gal 82208 82208	1
28.	23S8/45OC 8.8	Bolt 8 x 45 galv., 8.8 82105 82105	3
29.	23S6/20	Bolt 6 x 20 galv., 8.8 82105 82105 8.8	2
30.	23P10 82.005	Round washer 10 galv., 82005 82005	2
31.	23P12OC	Round washer 12 galv., 82005	4
32.	23P8OOC	Round washer 8 galv., 82005 82005	7
33.	23P6OOC	Round washer 6 galv., 82005 82005	1
34.	23N6OC	Nut M6 galv., 82144 5 82144 5	5
35.	23NS8OC	Self-locking nut M8 galv., 82175 8 82175 8	8
36.	23NS6OC	Self-locking nut M6 galv., 82175 8 82175 8	1
37.	23NS12OC	Self-locking nut M12 galv., 82175 8 82175 8	3
38.	23N8OC	Nut M8 galv., 82144 82144 5 82144	1
39.	23N12OC	Nut M12 galv., 82144 5	4
40.	23NS10OC	Self-locking nut M10 galv., 82175 8 82175 8	2

**19. HYDRAULICS – WORK TABLE**

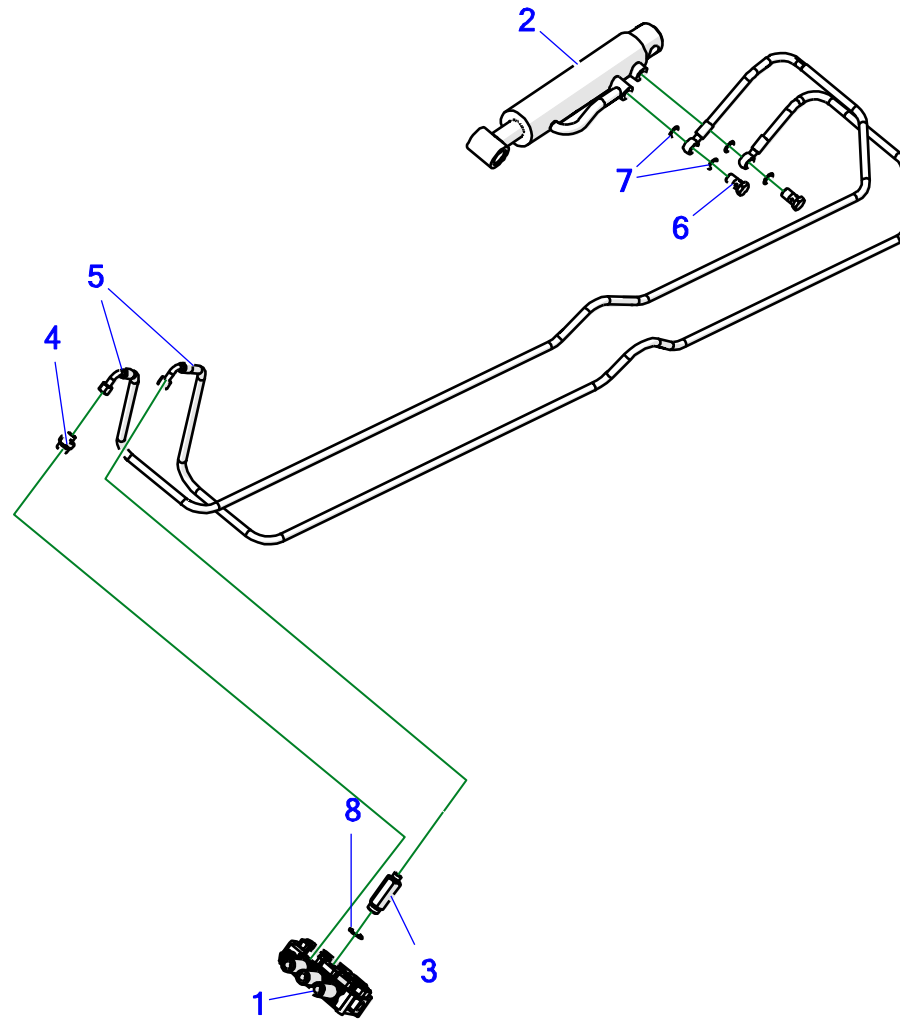




**Tabela 19. Hydraulics – work table**

No.	No.	Part or assembly name	Volume
1.	24RMD3 LINKOWY	MD3 rope distributor Q45	1
2.	24ZD	Throttle check valve VRFU 90-3/8"	1
3.	24S200	OMR 200 (BMR) hydraulic motor	1
4.	24SCJ2F40/22/65	Actuator 40/22/65*L-180	1
5.	24LS2,5M	Control wire L-2500 (fork)	3
6.	24K1/2-16X1.5 L-59	Straight connector 1/2 16 x 1.5 L-59	1
7.	24KZ18/18	Angle nipple 18/18 x 1.5 (short tube)	1
8.	24KP1/2 18	Straight connection 1/2 edx18-1.5	1
9.	24KP3/8 18	Straight connector 3/8 x 18-1.5 12LR	1
10.	24KP3/8 16	Straight connector 3/8 x 16-1.5	1
11.	POD-HKR-000076	Straight connector 18 x 1.5 - 16 x 1.5	2
12.	24KT16/16/16	Tee connector 16 x 16 x 16 10L	2
13.	24UPPM22	Metal & rubber washer, PPM22 30 x 22	1
14.	POD-HPR-000109	AA90/111/8 L=2900	2
15.	POD-HPR-000109	AA90/111/8 L=700	2
16.	POD-HPR-000109	AA90/111/8 L=300	2
17.	24KP1/2 16	Straight connection 1/2 edx16-1.5	2

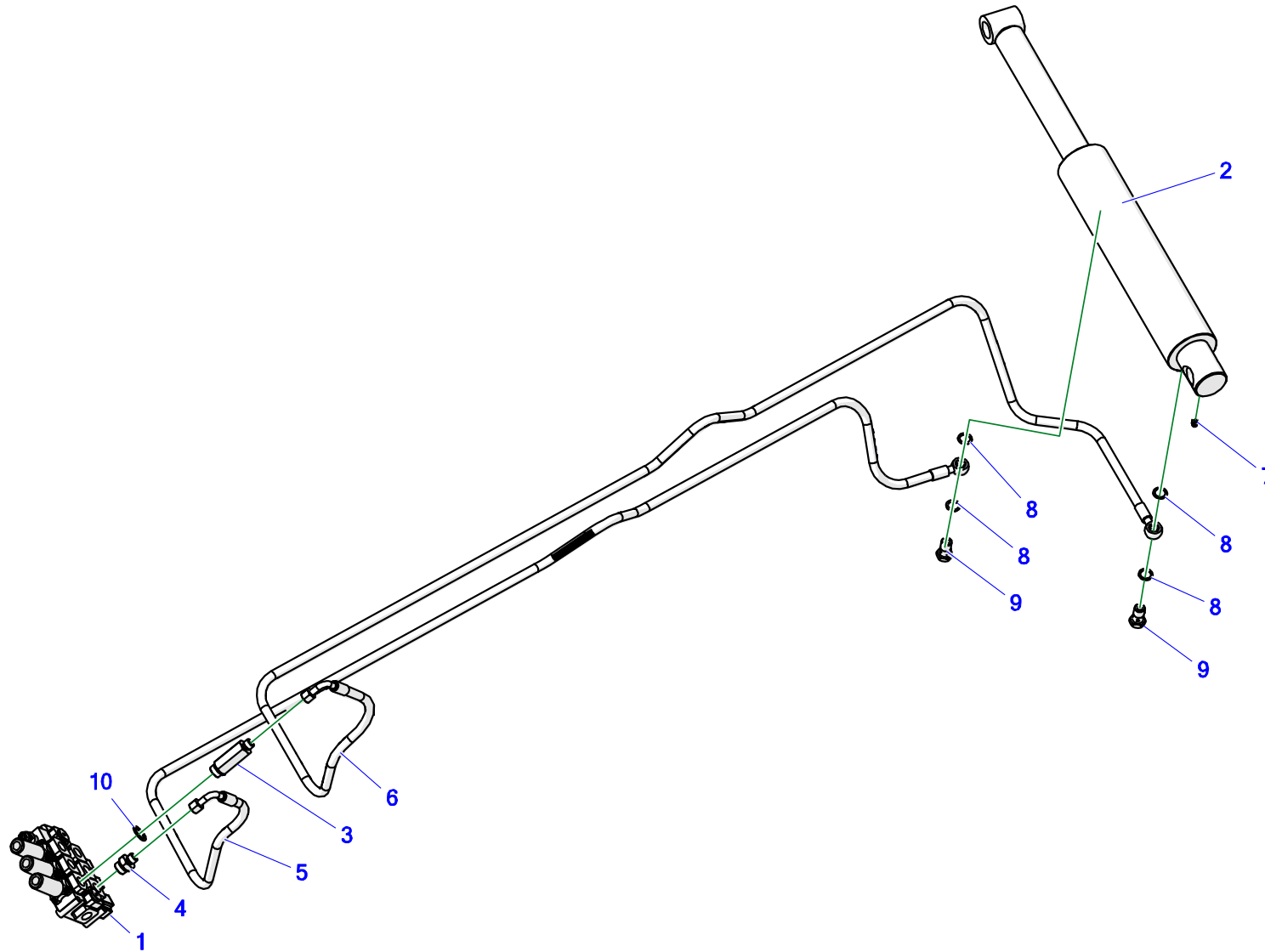
**20. HYDRAULICS – MOVABLE FRAME**



**Tabela 20. Hydraulics – movable frame**

No.	No.	Part or assembly name	Volume
1.	24RMD3 LINKOWY	MD3 rope distributor Q45	1
2.	24SCJ63/32/200	Cylinder 63/36/200 SMT2S *L-446	1
3.	24K1/2-16X1.5 L-59	Straight connector 1/2 16 x 1.5 L-59	1
4.	24KP1/2 16	Straight connection 1/2 edx16-1.5	1
5.	A90RNM/114/8 L=2400	A90RNM/114/8 L=2400	2
6.	24SO18/1.5	Eye bolt M18 x 1.5 16 L31	2
7.	24U18	Copper washer diam. 18 x 24 x 1.5	4
8.	24UPPM22	Metal & rubber washer, PPM22 30 x 22	1

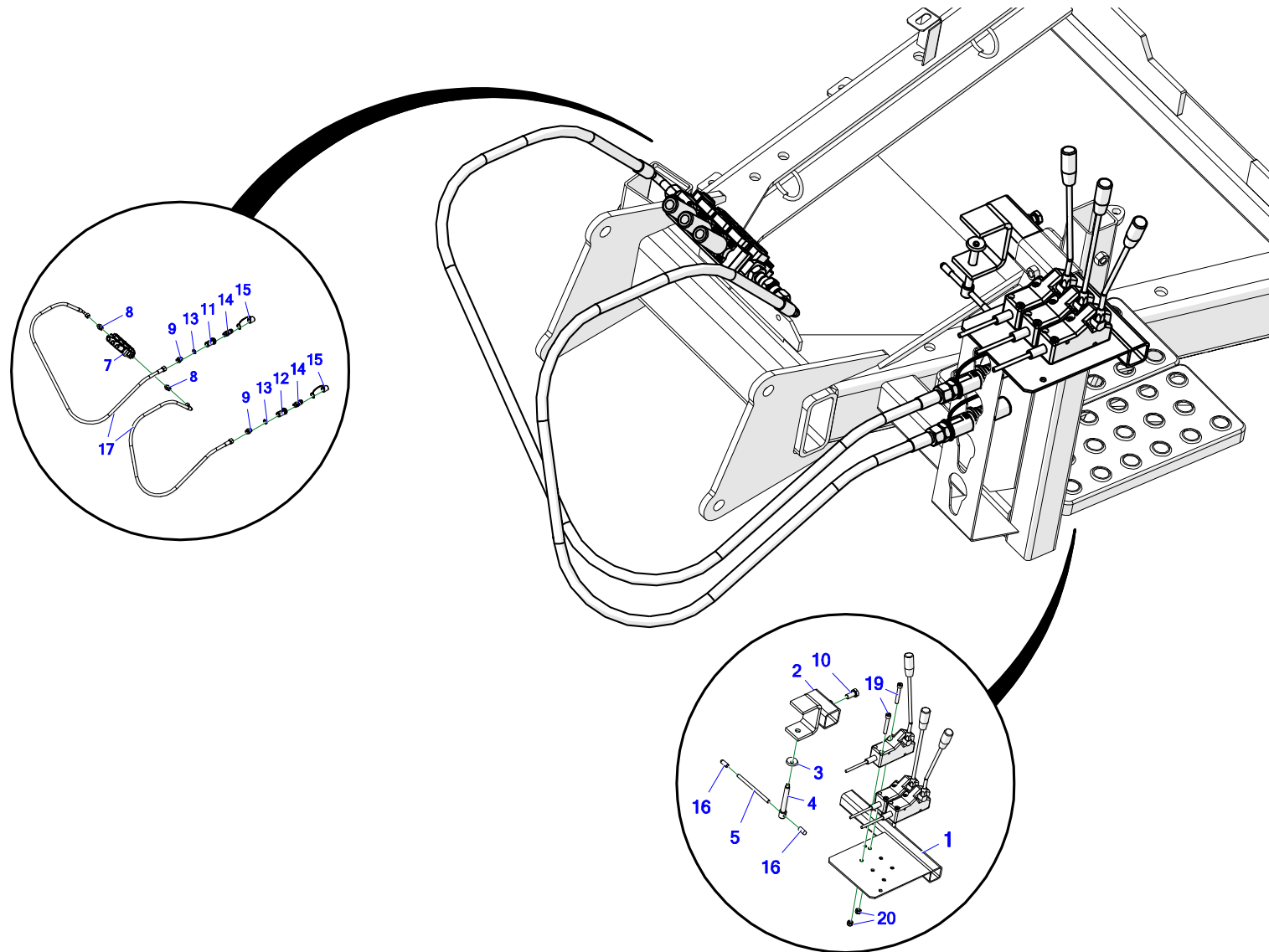
**21. HYDRAULICS – LOADING ARM**



**Tabela 21. Hydraulics – loading arm**

No.	No.	Part or assembly name	Volume
1.	24RMD3 LINKOWY	MD3 rope distributor Q45	1
2.	24SCJ2F80/50/275	Actuator 80/50/275*L-520	1
3.	24K1/2-16X1.5 L-59	Straight connector 1/2 16 x 1.5 L-59	1
4.	24KP1/2 16	Straight connection 1/2 edx16-1.5	1
5.	POD-HPR-000109	A90RNM/114/8 L=2450	1
6.	POD-HPR-000109	A90RNM/114/8 L=2650	1
7.	23SM	Lubricating nipple M6 x 1.0 straight	1
8.	24U18	Copper washer diam. 18 x 24 x 1.5	4
9.	24SO18/1.5	Eye bolt M18 x 1.5 16 L31	2
10.	24UPPM22	Metal & rubber washer, PPM22 30 x 22	1

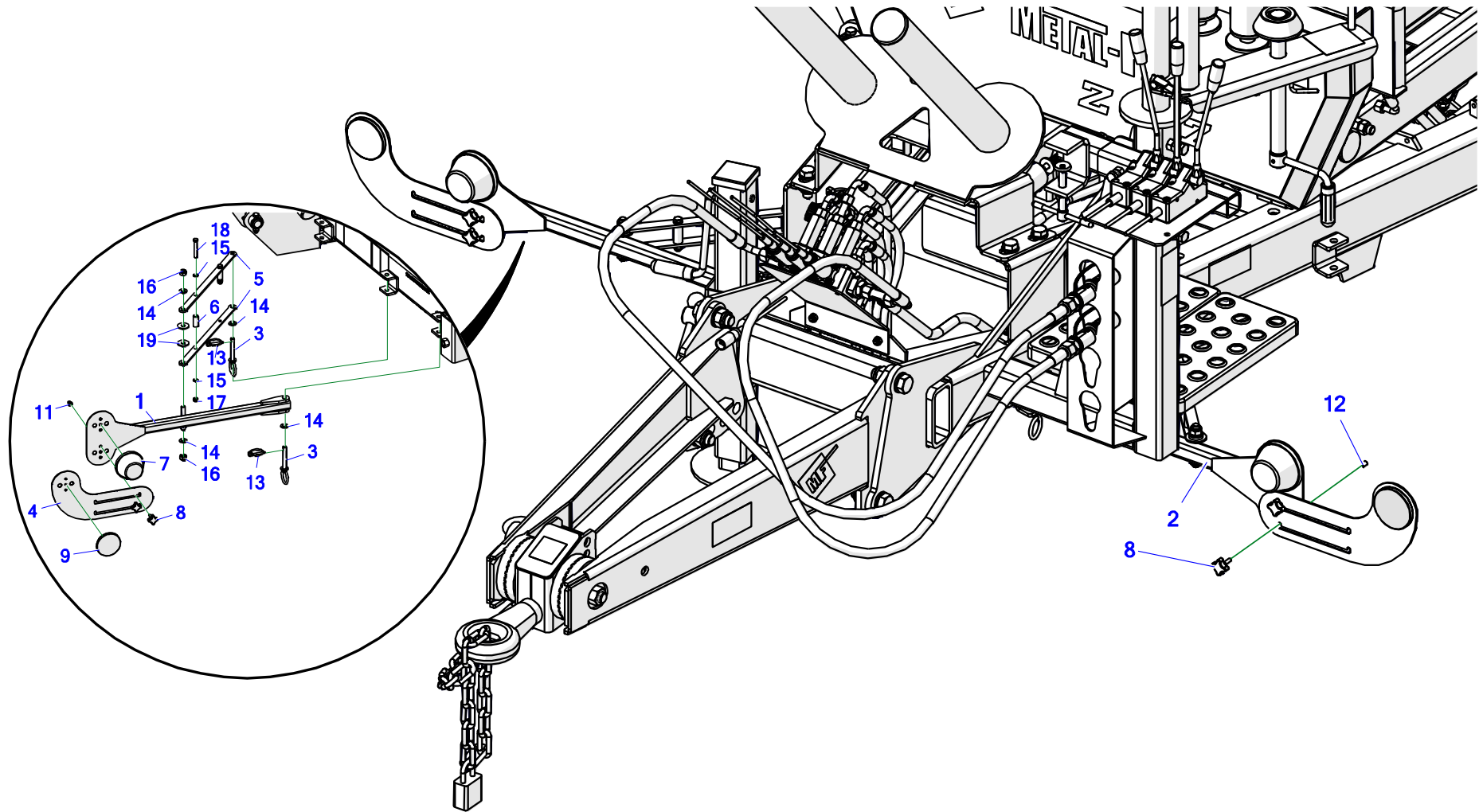
## 22. HYDRAULICS – CONTROL LEVERS



**Tabela 22. Hydraulics – control levers**

No.	No.	Part or assembly name	Volume
1.	Z-577 00.13.00	Separator device support	1
2.	Z-237 00.54.10	Handle body	1
3.	Z-237 215.000.004	Cap	1
4.	Z-237 00.54.30	Special bolt	1
5.	Z-237 00.54.04	Knob	1
6.	24DZS	Rope controller lever	3
7.	24RMD3 LINKOWY	MD3 rope distributor Q45	1
8.	24KP1/2 18	Straight connection 1/2 edx18-1.5	2
9.	24K1/2 22	Straight connector 1/2 edx22-1.5 15L	2
10.	23S12/25OC 8.8	Screw 12 x 25 galv., 8.8 82105 82105	1
11.	POD-HPZ-000309	EURO plug marking holder green +	1
12.	POD-HPZ-000310	EURO plug marking holder green -	1
13.	24UPPM22	Metal & rubber washer, PPM22 30 x 22	2
14.	24ZWE13	EURO plug valve13 M22 x 1.5	2
15.	24ZWNE13	Cap for EURO valve plug 13 (green, yellow, blue, red)	2
16.	POD-TSZ-000142	Round plug, ext. 9.8 mm black (Es-12888)	2
17.	POD-HPR-00010	A90/114/10 L-2200	2
18.	23N12	Nut M12 black 82144 5 82144 5	1
19.	23SI8X55	Allen bolt 8 x 55 galv., 8.8 82302	6
20.	23NS8OC	Self-locking nut M8 galv., 82175 8 82175 8	6

**23. LIGHTS – FRONT**



Z577-10 09.00.00

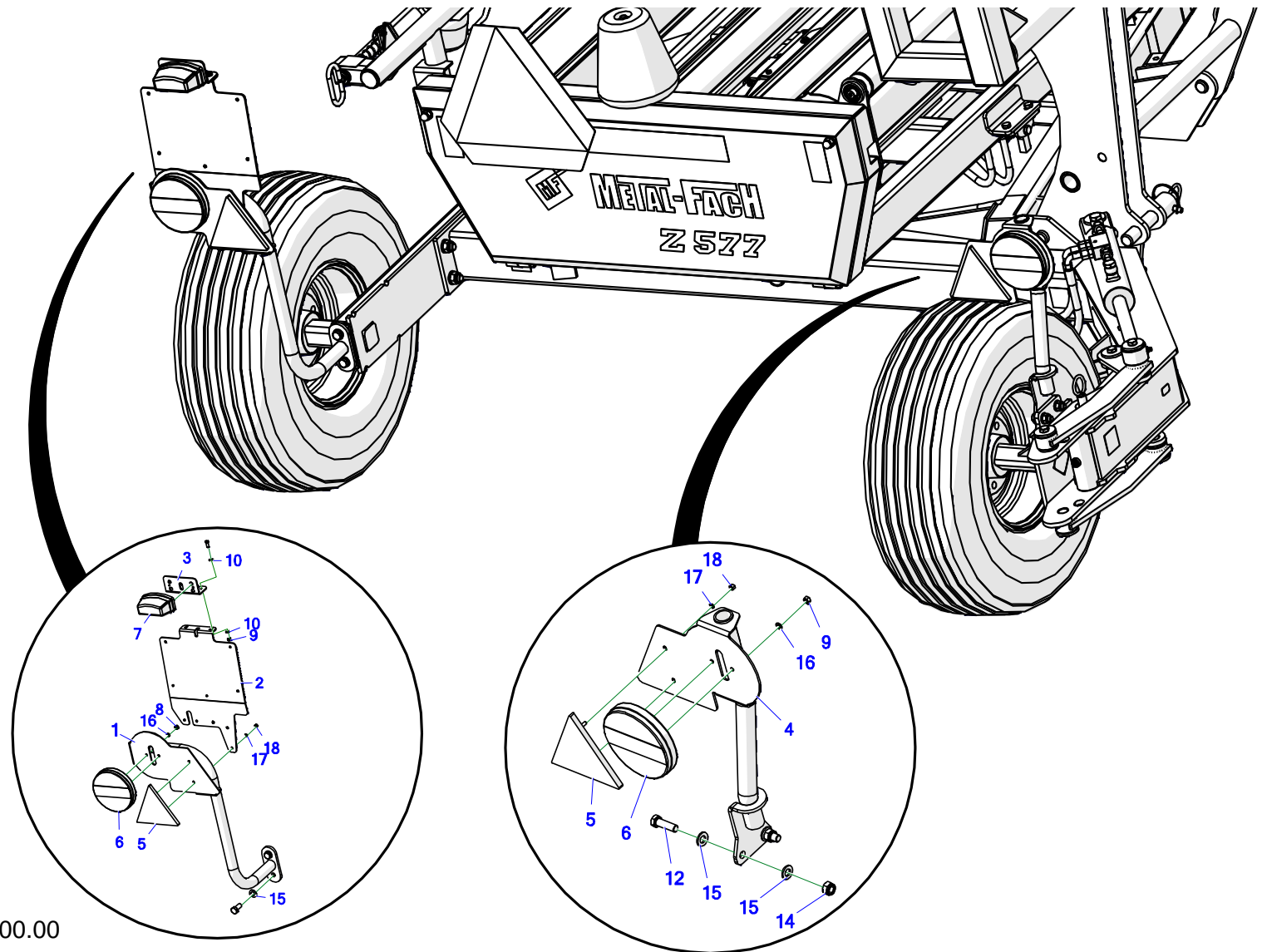


### Tabela 23. Lights – front

Electrics and lighting assy. - Z577-10 09.00.00

No.	No.	Part or assembly name	Volume
1.	Z577-10 09.30.10	Right headlight bracket, assy.	1
2.	Z577-10 09.40.10	Left headlight bracket, assy.	1
3.	Z577-10 09.30.20	Lights bracket pin	4
4.	Z577-10 09.30.03	Front reflector bracket	2
5.	Z577-10 09.30.01	Right lock beam	4
6.	Z577-10 09.30.02	Lock spacer sleeve	4
7.	26LP	Front position light WE92-12z	2
8.	POD-KAB-000030-1	Knob P1M6 x 20	4
9.	POD-ELK-000089	Round reflector, white	2
10.	POD-ELK-000339	Round reflector orange No. 844	2
11.	POD-ELZ-000001-1	Flanged cylindrical rivet nut With knurled shank M6 x 14 FE	2
12.	23NM6	Flanged rivet nut M6 steel	2
13.	23PR6	cotter pin with a ring 6	4
14.	23P12OC	Round washer 12 galv., 82005	8
15.	23P8OOC	Round washer 8 galv., 82005 82005	8
16.	23NS12OC	Self-locking nut M12 galv., 82175 8 82175 8	4
17.	23NS8OC	Self-locking nut M8 galv., 82175 8 82175 8	4
18.	23S8/60OC 8.8	Bolt 8 x 60 galv., 8.8 82101 82101	4
19.	23P12OOC	Round washer 12 galv., coat. 82030	4

**24. LIGHTS – REAR**

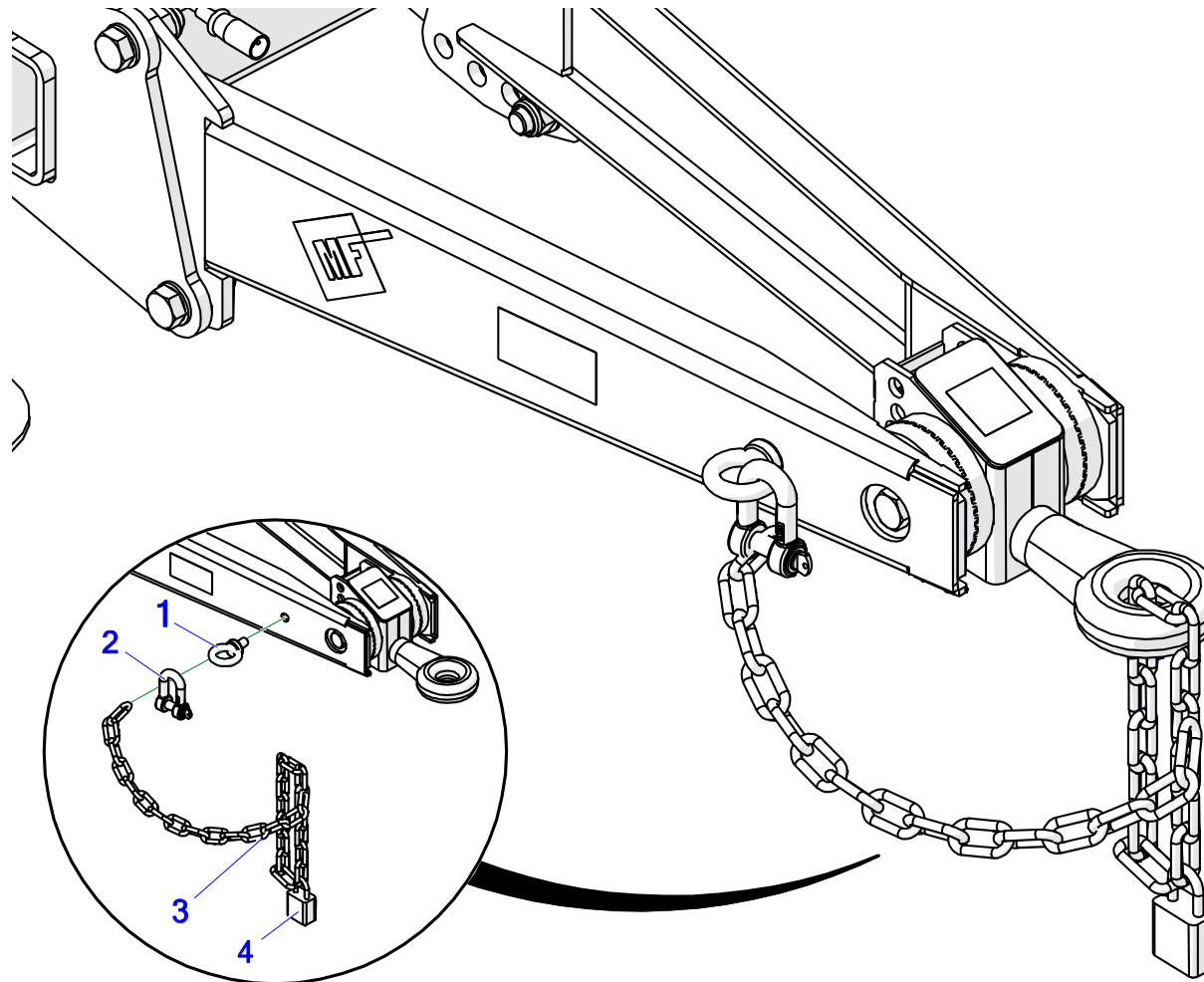


Z577-10 09.00.00

### Tabela 24. Lights – rear

Electrics and lighting assy. - Z577-10 09.00.00

No.	No.	Part or assembly name	Volume
1.	Z577-10 09.10.10	Left light bracket welded	1
2.	Z577-10 09.50.01	Licence plate support	1
3.	Z577-10 09.50.02	Licence plat light bracket	1
4.	Z577-10 09.20.10	Right light bracket welded	1
5.	26TO	Reflective triangle	2
6.	POD-ELK-000308	Rear combination light W95 (744) with 200 cm YLY-S 4 x 0.75 mm cable	2
7.	POD-ELK-000237	Licence plate light WO8-48	1
8.	23N6OC	Nut M6 galv., 82144 5 82144 5	4
9.	23NS6OC	Self-locking nut M6 galv., 82175 8 82175 8	2
10.	23P6OOC	Round washer 6 galv., 82005 82005	4
11.	23S6/16 8.8OC	Bolt 6 x 16 galv., 8.8 82105 82105 8.8	2
12.	23S12/40OC 8.8	Bolt 12 x 40 galv., 8.8 82105 82105	2
13.	23S12/30OC 8.8	Bolt 12 x 30 galv., 8.8 82105 82105	2
14.	23NS12OC	Self-locking nut M12 galv., 82175 8 82175 8	2
15.	23P12OC	Round washer 12 galv., 82005	6
16.	23P6SPOC	Spring washer, 6.1 galv., 82008 82008	4
17.	23P5,1SPOC	Spring washer 5.1 galv., 82008 82008	4
18.	23N5OC	Nut M5 galv.,82144 5 82144 5	4

**25. HITCH PROTECTION (EU APPROVAL)****Tabela 25. Hitch protection (EU approval)**

No.	No.	Part or assembly name	Volume
1.	POD-ELZ-000818	Eye bolt M16 galv. DIN580	1
2.	POD-ELZ-000477	Shackle, 16 mm	1
3.	23LSFI8OC	General purpose chain 8 mm galv., 8 x 30 x 50 (0.7 m Z560)I	1
4.	POD-OGL-001109	Padlock 50 mm	1







Metal-Fach Sp. z o.o. stale doskonali swoje wyroby i dostosowuje ofertę do potrzeb klientów, w związku z tym zastrzega sobie prawo do wprowadzania zmian w wyrobach bez powiadamiania. Prosimy więc przed podjęciem decyzji o zakupie, o kontakt z autoryzowanym dealerm lub handlowcami Metal-Fach Sp. z o.o. Metal-Fach Sp. z o.o. wyklucza roszczenia związane z danymi i zdjęciami zawartymi w tym katalogu, przedstawiona oferta nie stanowi oferty w myśl przepisów Kodeksu Cywilnego.

Zdjęcia nie zawsze przedstawiają wyposażenie standardowe.

Oryginalne części zamienne są dostępne u autoryzowanych dealerów na terenie kraju i zagranicy oraz w sklepie firmowym Metal-Fach.

#### SERWIS

16-100 Sokółka, ul. Kresowa 62  
tel.: +48 85 711 07 80; fax: +48 85 711 07 93  
serwis@metalfach.com.pl

#### SPRZEDAŻ

16-100 Sokółka, ul. Kresowa 62  
tel.: +48 85 711 07 78; fax: +48 85 711 07 89  
handel@metalfach.com.pl

#### HURTOWNIA CZĘŚCI ZAMIENNYCH

16-100 Sokółka, ul. Kresowa 62

#### Sprzedaż Hurtowa:

tel.: +48 85 711 07 80; fax: +48 85 711 07 93  
serwis@metalfach.com.p

#### Sprzedaż Indywidualna:

tel.: +48 85 711 07 80; fax: +48 85 711 07 93  
serwis@metalfach.com.p