



METAL-FACH



SELF-LOADING BALE WRAPPER WITH HYDRAULIC FILM CUTTER

Z577

PARTS CATALOGUE
REVISION IV
MARCH 2022



The information included in the catalogue is valid as of the date of its preparation. The manufacturer reserves its right to make design changes to machines, and due to this, some values or illustrations might not correspond to the actual state of the machine supplied to the user. The manufacturer reserves its right to make design changes without changing this catalogue.

Table of Contents

1. MAIN FRAME	4
2. DRAWBAR	7
3. FILM BRACKET	9
4. PARKING SUPPORT	11
5. WHEEL AXLES	13
6. MOVABLE FRAME.....	15
7. ROTARY FRAME – PART 1.....	19
8. ROTARY FRAME – PART 2.....	22
9. ROTARY FRAME – PART 3.....	25
10. ROTARY FRAME – THICK SHAFT I.....	28
11. ROTARY FRAME – THIN SHAFT II	30
12. LOADING ARM	32
13. REVERSE FILM FEEDER.....	34
14. MODULE	38
15. BALE TIPPER	41
16. HYDRAULIC FILM CUTTER	44
17. HYDRAULICS – WORK TABLE	48
18. HYDRAULIC SYSTEM – FILM CUTTER, MOVABLE FRAME.....	50
19. HYDRAULICS – LOADING ARM.....	53
20. HYDRAULICS – CONTROL LEVERS	55
21. LIGHTS – FRONT	58
22. LIGHTS – REAR.....	61
23. HITCH PROTECTION (EU APPROVAL).....	63
NOTES.....	65

1. MAIN FRAME

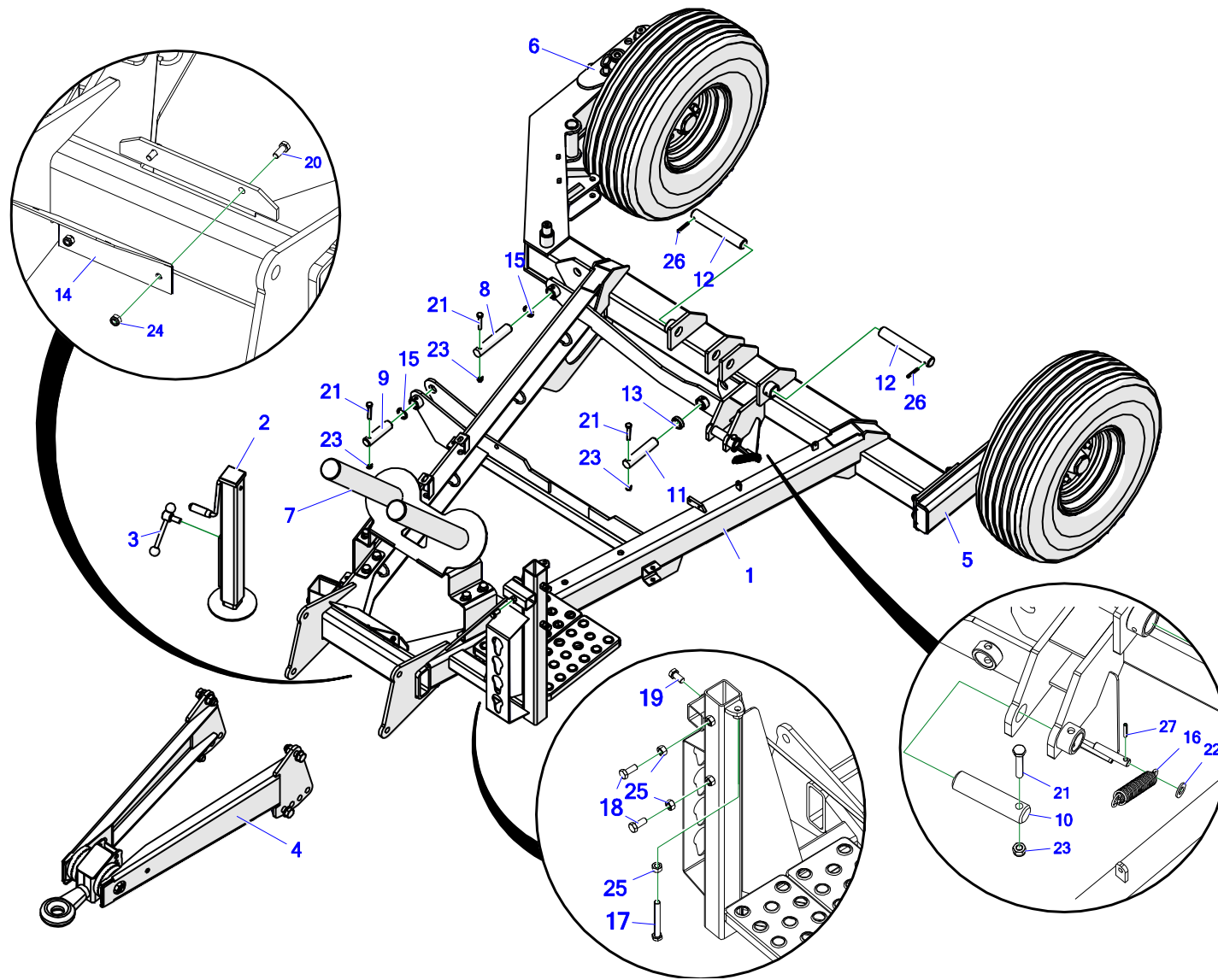
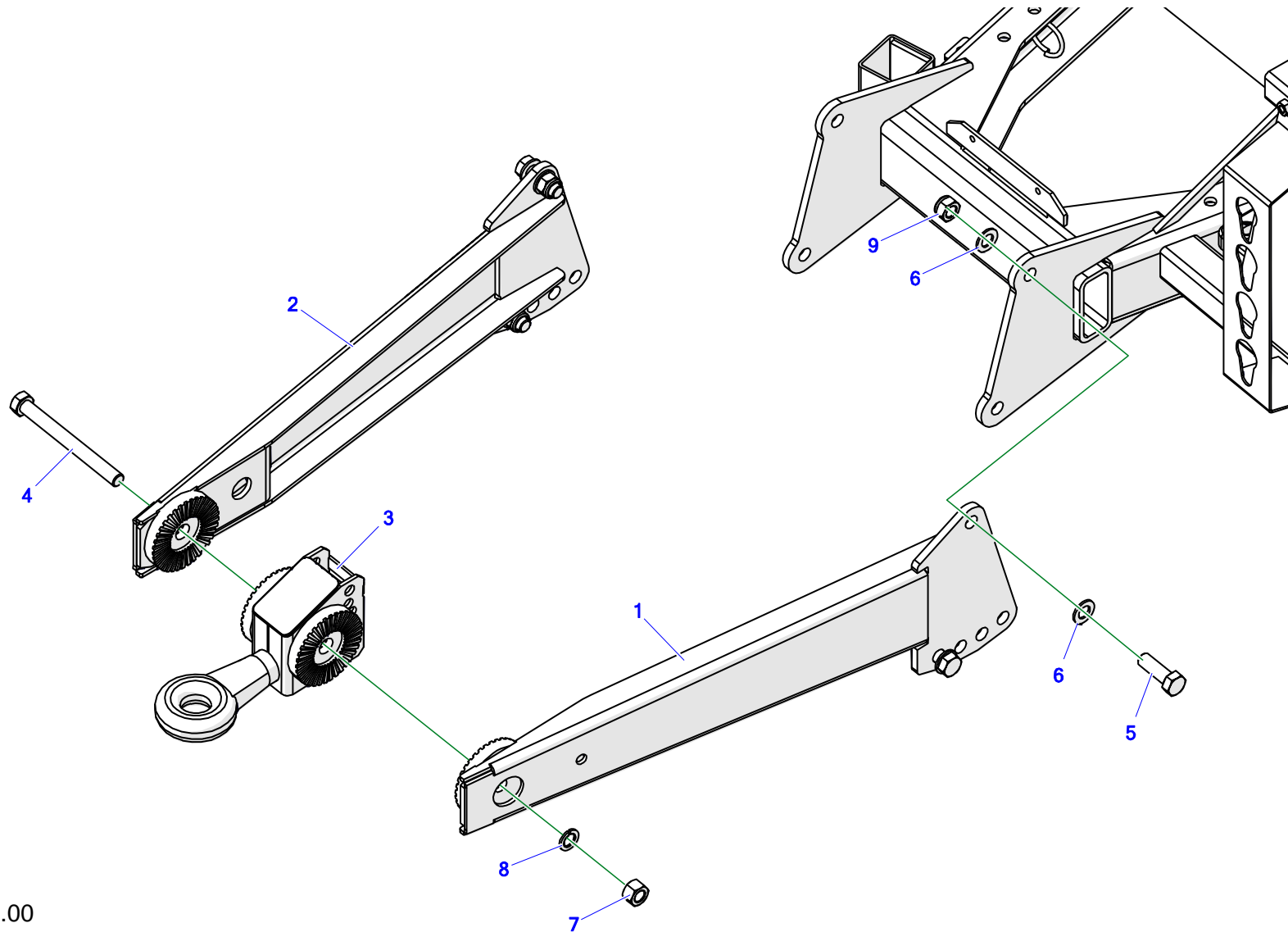


Tabela 1. Main frame

No.	No.	Part or assembly name	Volume
1.	Z577-10 01.01.00	Main frame, welded	1
2.	Z577-10 01.02.00	self-loading parking jack	1
3.	Z577-10 01.02.10	Parking jack clamp, assy.	1
4.	Z-577 01.03.00	Drawbar mount	1
5.	Z577-10 01.05.00	Wheel support	1
6.	Z577-10 01.06.00	Rotation axle shaft	1
7.	Z577-10 01.10.00	Welded film bracket.	1
8.	Z-577 00.00.21	Loading arm mounting pin I	1
9.	Z-577 00.00.22	Loading arm mounting pin II	1
10.	Z-577 00.00.23	Actuator mounting pin II	1
11.	Z-577 00.00.25	Actuator mounting pin III	1
12.	Z-577 00.00.27.1	Movable frame mounting pin	2
13.	Z-577 00.00.29	Spacer bushing	1
14.	Z-577 00.17.01.1	Separator device support	1
15.	Z577-10 01.00.02	Spacer bushing	2
16.	23SPN3/23/135 MAZ1771/1	Tension spring 3/23/136/34 galv., (maz-1771/B-1)	1
17.	23S12/100OC 8.8	Bolt 12 x 100 galv., 8.8 82101 82101	1
18.	23S12/30OC 8.8	Bolt 12 x 30 galv., 8.8 82105 82105	2
19.	23S12/25OC 8.8	Screw 12 x 25 galv., 8.8 82105 82105	1

No.	No.	Part or assembly name	Volume
20.	23S8/20OC 8.8	Bolt 8 x 20 galv., 8.8 82105 82105	2
21.	23S10/60OC 8.8	Bolt 10 x 60 galv. 8.8 82101 82101	4
22.	23P12OC	Round washer 12 galv., 82005	1
23.	23NS10OC	Self-locking nut M10 galv., 82175 8 82175 8	4
24.	23NS8OC	Self-locking nut M8 galv., 82175 8 82175 8	2
25.	23N12OC	Nut M12 galv., 82144 5	3
26.	23K8/50	Spring pin 8 x 50 DIN 1481	2
27.	POD-ELZ-000344	Spring pin 5 x 30 DIN 1481	1

2. DRAWBAR



Z-577 01.03.00

Tabela 2. Drawbar

Drawbar mount - Z-577 01.03.00

No.	No.	Part or assembly name	Volume
1.	Z-577 01.03.30	Left hitch arm, assy.	1
2.	Z-577 01.03.40	Right hitch arm, assy.	1
3.	Z-577 01.03.50	Hitch, welded	1
4.	POD-ELZ-000924	bolt 20 x 200 galv., 10.9 82101	1
5.	23S20/60 8.8 OC	Bolt 20 x 60 galv., 8.8 82105 82105	4
6.	23P20OOC	Round washer 20 galv., 82005 82005	8
7.	23N M20 CL.8 DIN934OC	Nut M20 galv., 8.8 DIN934 8 DIN934 8	1
8.	23P20SP	Spring washer, 20.5 galv., 82008 82008	1
9.	23NS20OC 82.175	Self-locking nut M20 galv., 82175 8 82175 8	4

3. FILM BRACKET

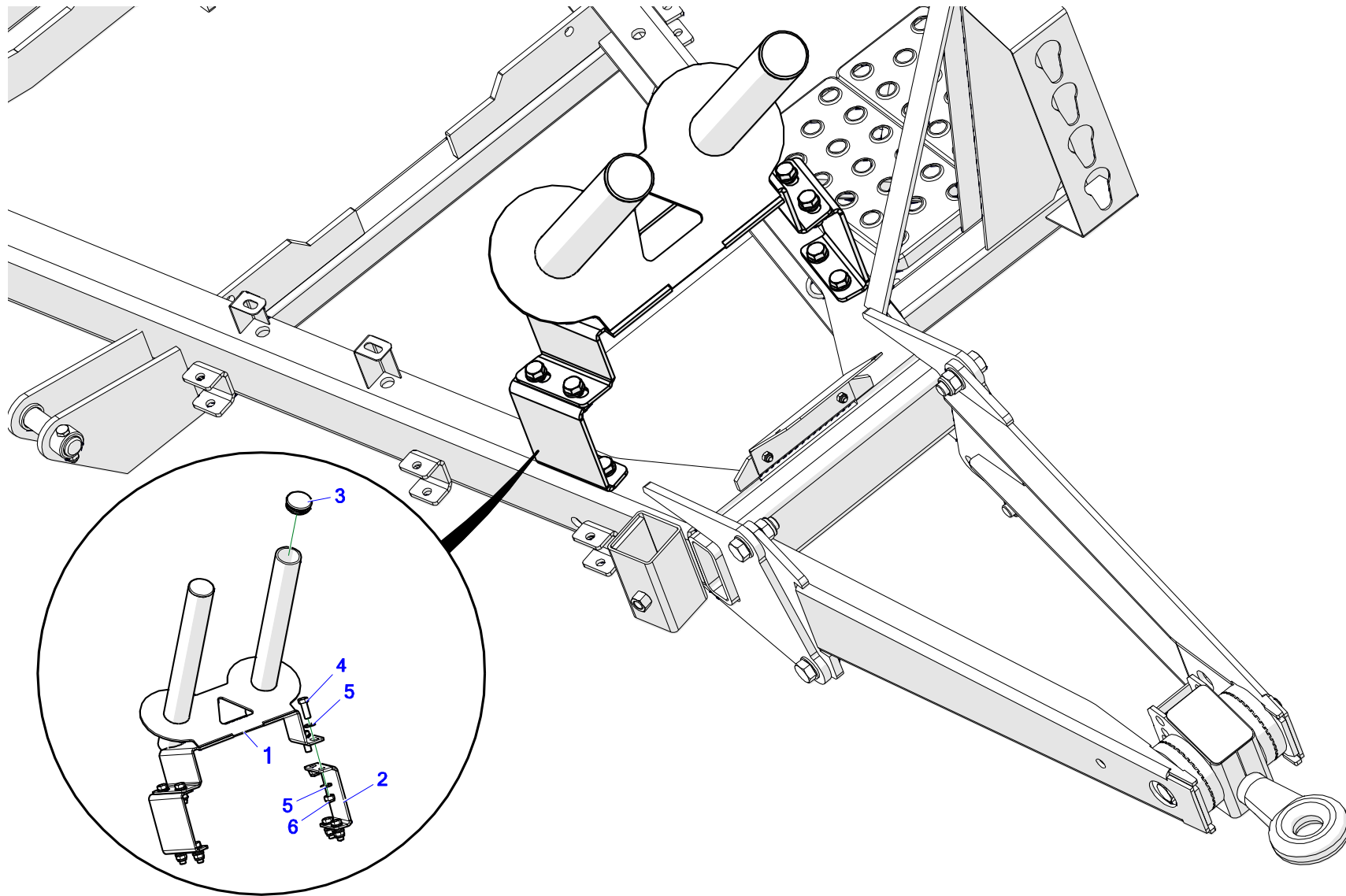


Tabela 3. Film bracket

No.	No.	Part or assembly name	Volume
1.	Z577-10 01.10.00	Welded film bracket.	1
2.	Z577-10 01.00.03	Hopper spacer	2
3.	POD-TSZ-000230	Round end cap, dia. 70 (Es-465601)	2
4.	23S16/45OC	Screw 16 x 45 galv., 8.8 82105 82105	8
5.	23P16OOC	Round washer 16 galv., 82005 82005	16
6.	23NS16OC	Self-locking nut M16 galv., 82175 8 82175 8	8

4. PARKING SUPPORT

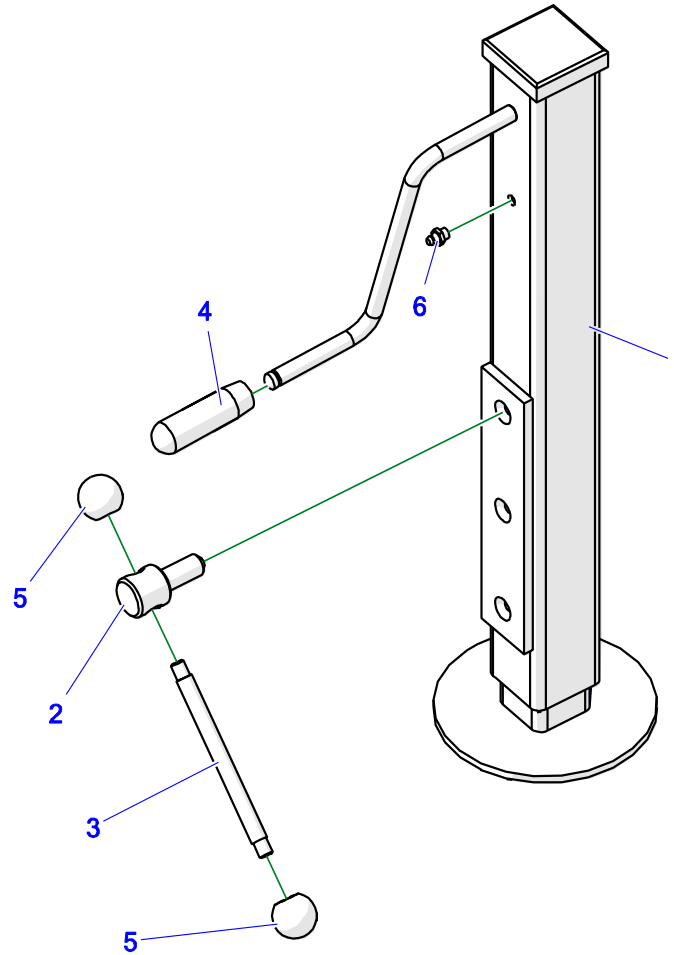


Tabela 4. Parking jack

No.	No.	Part or assembly name	Volume
1.	Z577-10 01.02.00	support jack	1
2.	Z577-10 01.02.12	Hand wheel bolt	1
3.	Z577-10 01.02.11	Hand wheel rod	1
4.	25RP	Feeder handle	1
5.	28B32 M10	Knob B32 M10 No. 462099	2
6.	23SM8	Lubricating nipple M8 x 1.0 straight	1

5. WHEEL AXLES

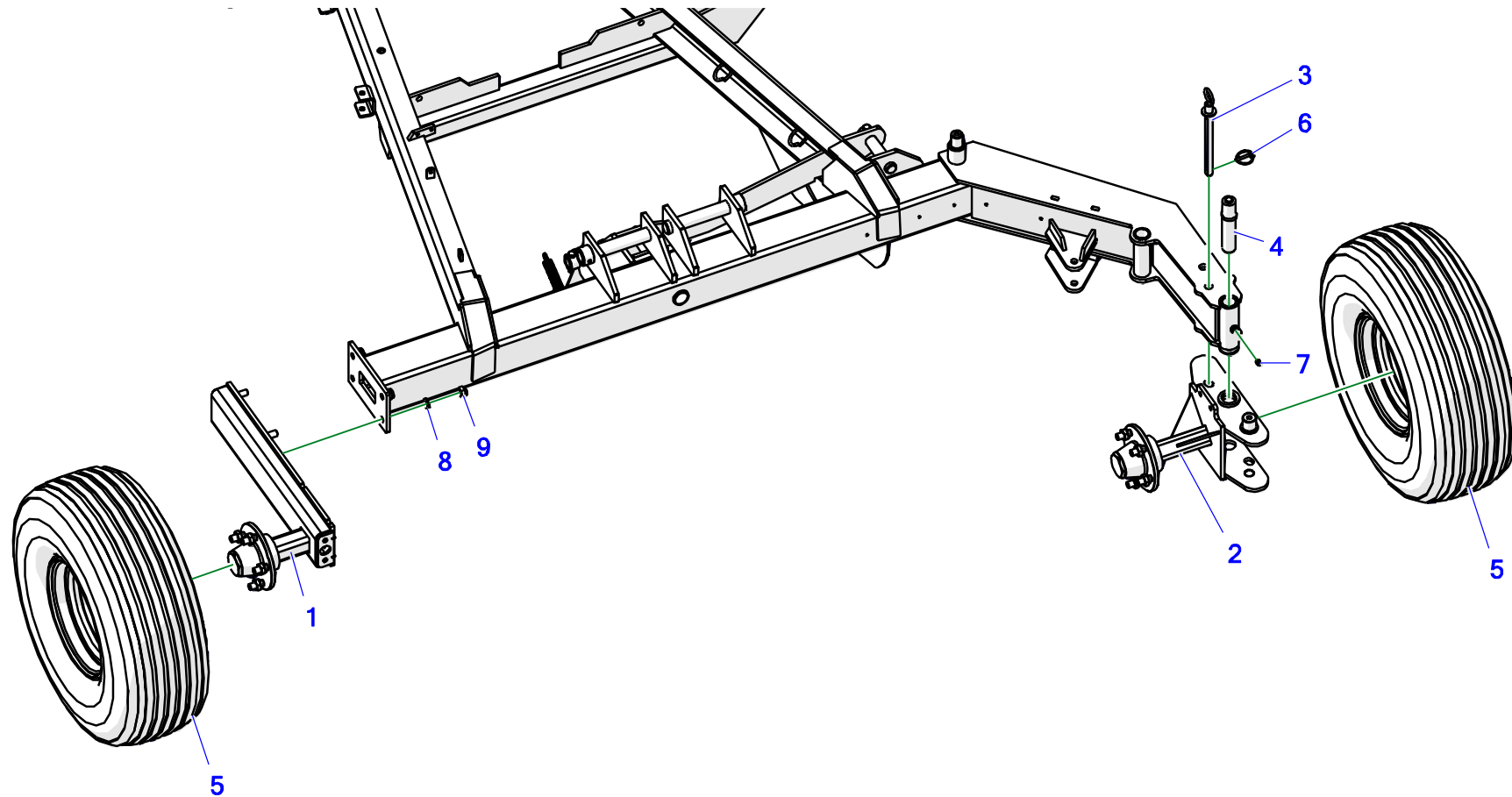
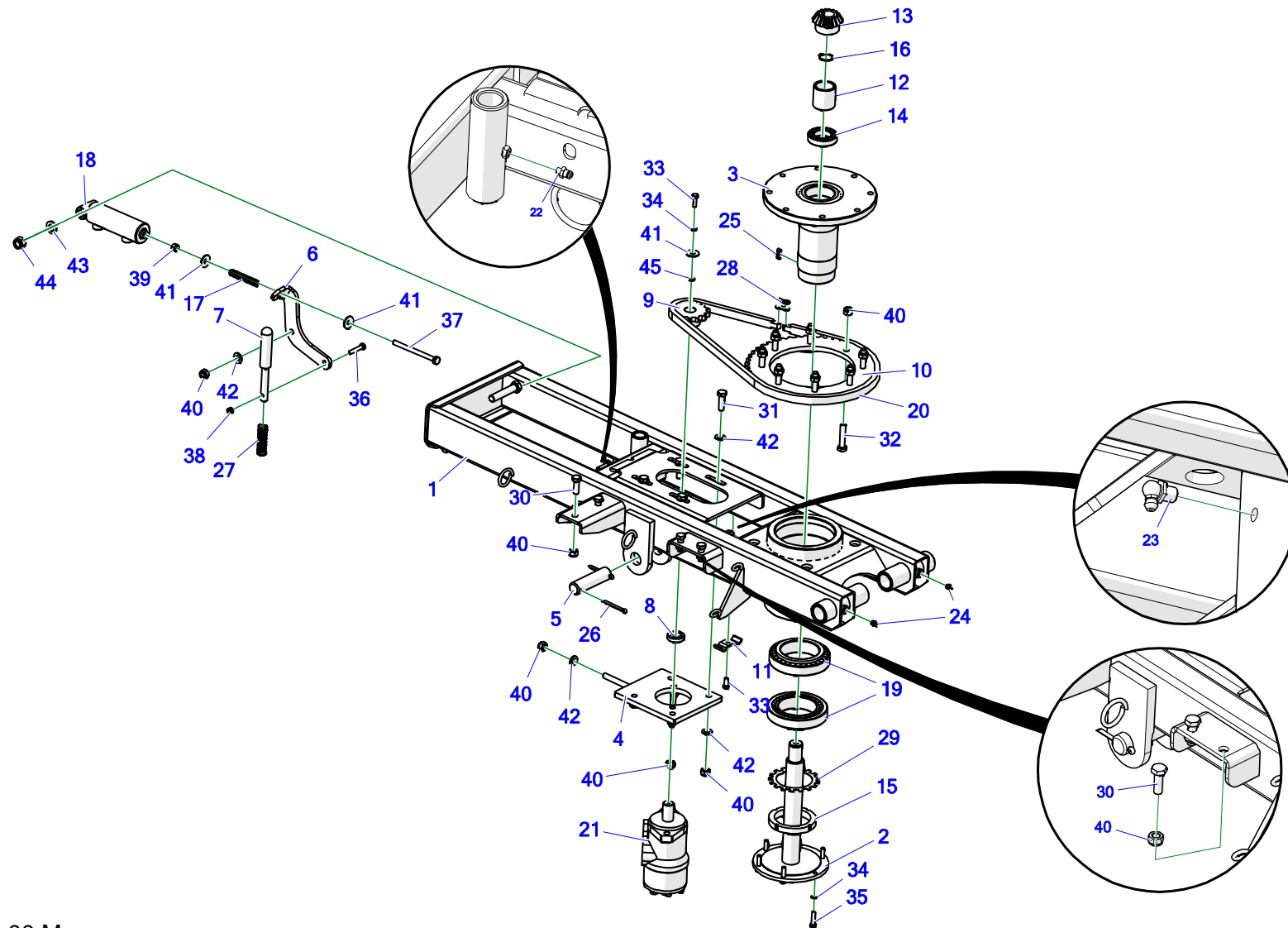


Tabela 5. Wheel axles

No.	No.	Part or assembly name	Volume
1.	Z577-10 01.05.00	Wheel support	1
2.	Z577-10 01.06.00	Rotation axle shaft	1
3.	Z577-10 00.03.00	Wheel protection assy.	1
4.	Z577-10 01.13.00	Wheel pin, complete	1
5.	25K10.0/80-12 10PR	Wheel 10.0/80-12 10PR	2
6.	23PR6	cotter pin with a ring 6	1
7.	23SM10/1	Lubricating nipple M10 x 1.0 straight	1
8.	23P16OOC	Round washer 16 galv., 82005 82005	4
9.	23NS16OC	Self-locking nut M16 galv., 82175 8 82175 8	4

6. MOVABLE FRAME



Z-577 02.00.00.M

Tabela 6. Movable frame

Movable frame mount - Z-577 02.00.00.M

No.	No.	Part or assembly name	Volume
1.	Z577-10 02.01.00.1	Movable frame, welded	1
2.	Z593-1E 02.04.00	Axle, complete	1
3.	Z-237 00.15.00.1	Journal, complete	1
4.	Z-577 00.10.00	Engine support	1
5.	Z-577 00.00.24	Actuator mounting pin II	1
6.	Z-237 00.00.06	Lever III	1
7.	Z-237 00.00.07	Lock pin	1
8.	Z-237 00.00.11	Engine spacer	1
9.	Z-237 00.00.12	Sprocket Z-14	1
10.	Z-237 00.00.14.1	Sprocket Z-50	1
11.	Z-593 01.00.11	Hose clamp	1
12.	Z577-10 02.00.11	Axle bearing spacer bushing	1
13.	POD-EOS-000409	Bevel wheel Z16 M4	1
14.	POD-LOZ-000322	Bearing 6008 2RS	1
15.	25L17KM	KM17(N) bearing nut	1
16.	23SZ30	Circlip Z30	1
17.	23S22	Compression spring 2/15/85/18.5 galv., (maz-2046)	1
18.	24SCJ2F40/22/65	Actuator 40/22/65*L-180	1

No.	No.	Part or assembly name	Volume
19.	25L32018	32018 bearing	2
20.	25LO12B1 73OGN	Chain 12B1 73 links (1.45 m)	1
21.	24S200	OMR 200 (BMR) hydraulic motor	1
22.	23SM	Lubricating nipple M6 x 1.0 straight	1
23.	23SM10KAT90	lubricating nipple M10 x 1.0 90 angle	1
24.	23SM10/1	Lubricating nipple M10 x 1.0 straight	2
25.	23WP8/7/25	Key groove 8 x 7 x 25 DIN6885A DIN6885A	1
26.	23Z6/63	Cotter pin 6.3 x 63 galv.,	2
27.	23SPS2/17/75	Compression spring 2.5/22/75/10 galv., (maz-2047)	1
28.	25LO12P	Chain link 12B1 R-1 3/4"	1
29.	25PL	Bearing washer MB17	1
30.	23S12/35OC 8.8	Bolt 12 x 35 galv., 8.8 82105 82105	4
31.	23S12/40OC	Bolt 12 x 40 galv., 8.8 82101 82101	4
32.	23S12/60OC 8.8	Bolt 12 x 60 galv., 8.8 82101 82101	8
33.	23S8/2	Bolt 8 x 2	2
34.	23P8SPOC	Spring washer 8.2 galv., 82008 82008	7
35.	23S8/35OC 8.8	Bolt 8 x 35 galv., 8.8 82105 82105	6
36.	23S8/45OC 8.8	Bolt 8 x 45 galv., 8.8 82105 82105	1
37.	23S10/130OC	Bolt 10 x 130 galv., 8.8 82101 82101	1

No.	No.	Part or assembly name	Volume
38.	23NS8OC	Self-locking nut M8 galv., 82175 8 82175 8	1
39.	23N10OC	Nut M10 galv., 82144 5 82144 5	1
40.	23NS12OC	Self-locking nut M12 galv., 82175 8 82175 8	20
41.	23P10 OC030	Round washer 10 galv., coated 82030 82030	3
42.	23P12OC	Round washer 12 galv., 82005	10
43.	23P16OOC	Round washer 16 galv., 82005 82005	1
44.	23NS16OC	Self-locking nut M16 galv., 82175 8 82175 8	1
45.	23P8OOC	Round washer 8 galv., 82005 82005	1

7. ROTARY FRAME – PART 1

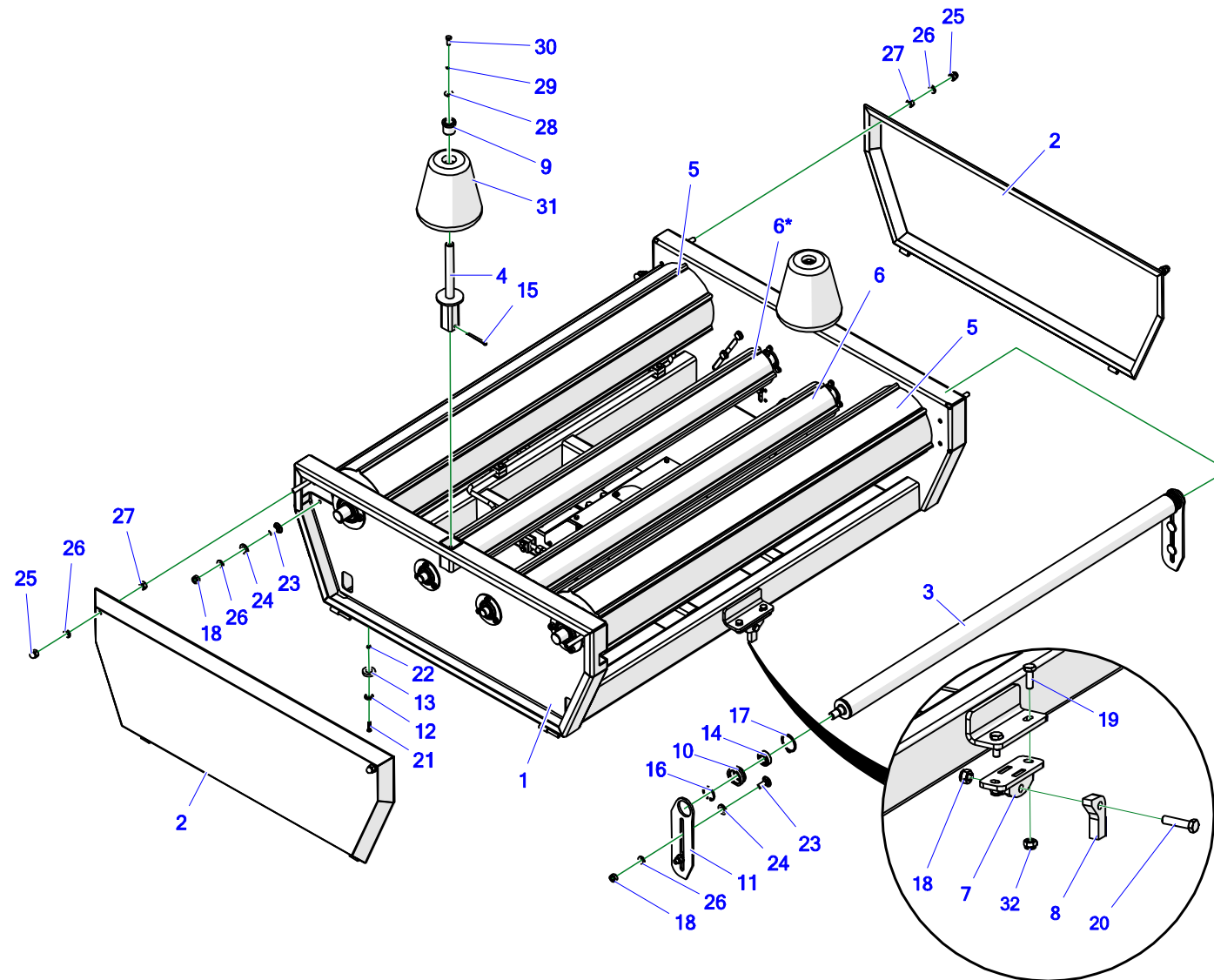


Tabela 7. Rotary frame – part 1

No.	No.	Part or assembly name	Volume
1.	Z577-10 03.01.00	Rotary frame, welded	1
2.	Z-593 03.10.00	Side guard	2
3.	Z-577 03.66.00	Buffer	1
4.	Z-237 05.01.00	Side wheel bracket	2
5.	Z-237 33.20.00	Thick shaft I	2
6.	Z-237 33.19.00	Thin shaft II, right	1
6.*	Z-237 33.19.00	Thin shaft II, left	1
7.	Z577-10 03.02.00	Welded bumper mount	1
8.	Z577-10 03.00.01	Buffer	1
9.	Z-237 05.00.04	Bevel wheel hub	2
10.	Z-560 02.00.25.1	Shaft mounting	2
11.	Z-593 03.00.13	Bumper mount	2
12.	Z-552 00.00.02	Magnet washer	1
13.	25MG	Ferrite ring magnet 36 x 18 x 8/F30	1
14.	25L6004	Bearing 6004 2RS	2
15.	23Z6/63	Cotter pin 6.3 x 63 galv.,	2
16.	23SW42	Circlip W42	2
17.	23SZ50	Circlip Z50	2
18.	23NS12OC	Self-locking nut M12 galv., 82175 8 82175 8	9

No.	No.	Part or assembly name	Volume
19.	23S10/30OC 8.8	Bolt 10 x 30 galv., 8.8 82105 82105	2
20.	23S12/50OC 8.8	Bolt 12 x 50 galv., 8.8 82101 82101	1
21.	23W6/30OC	Screw 6 x 30 galv., 82208 82208	1
22.	23NS6OC	Self-locking nut M6 galv., 82175 8 82175 8	1
23.	POD-ELZ-000486	Carriage bolt 12 x 35 galv., 8.8 82406	8
24.	23P16OOC	Round washer 16 galv., 82005 82005	6
25.	23N12KOL	Acorn nut M12 galv., 82181 8 82181 8	4
26.	23P12OC	Round washer 12 galv., 82005	11
27.	23N12OC	Nut M12 galv., 82144 5	4
28.	23P8OC 82.030	Round washer 8 galv., coated 82030	2
29.	23P8SPOC	Spring washer 8.2 galv., 82008 82008	2
30.	23S8/20OC 8.8	Bolt 8 x 20 galv., 8.8 82105 82105	2
31.	25KS	Bale wrapper cone wheel	2
32.	23NS10OC	Self-locking nut M10 galv., 82175 8 82175 8	2

8. ROTARY FRAME – PART 2

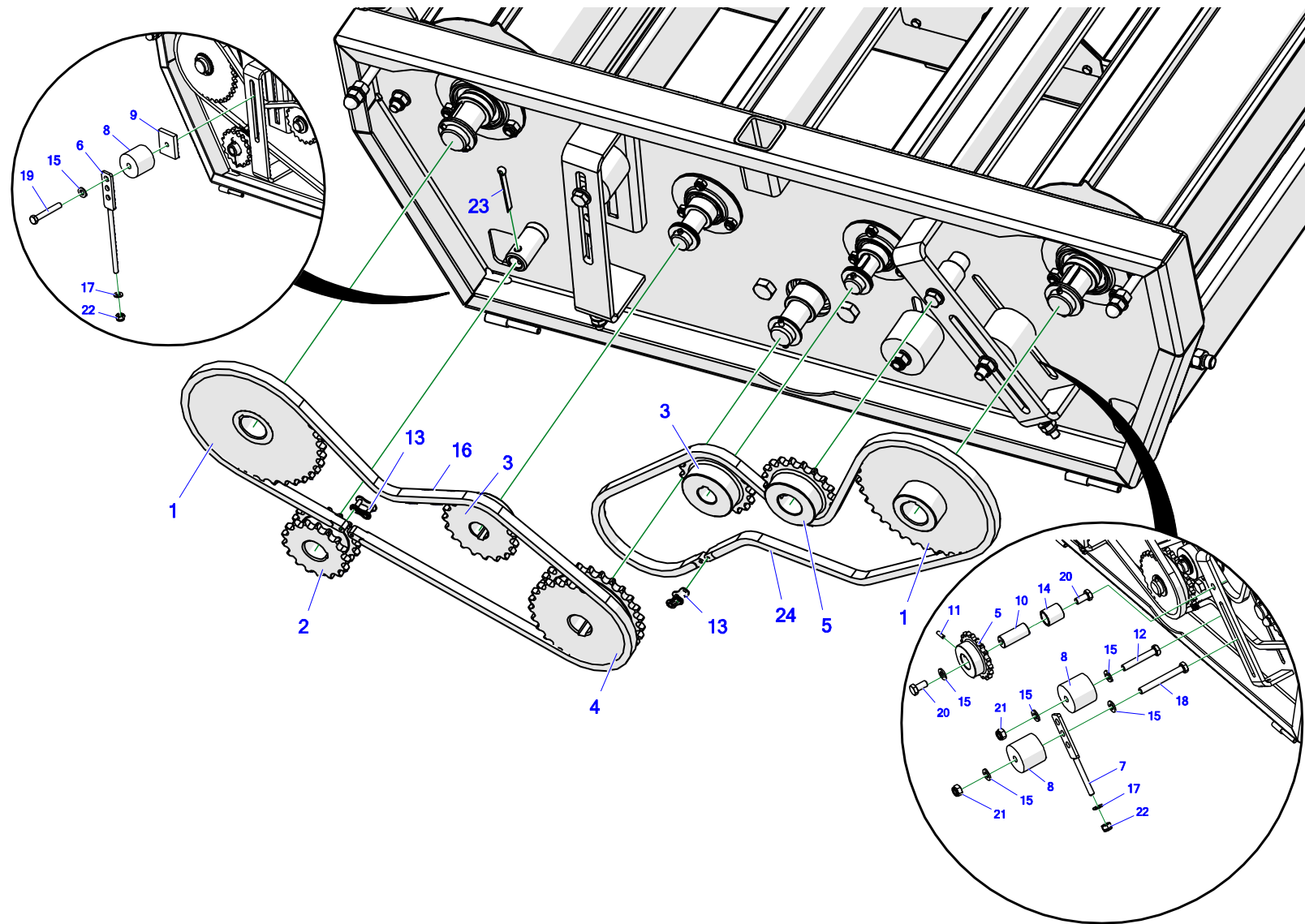


Tabela 8. Rotary frame – part 2

No.	No.	Part or assembly name	Volume
1.	Z-237 33.17.00.1	Sprocket Z-37	2
2.	Z593-1E 03.00.27	Double chain wheel Z-17	1
3.	Z-237 33.00.16.1	Sprocket Z-19	2
4.	Z593-1E 03.00.28	Double chain wheel Z-27	1
5.	Z-237 33.00.48	Sprocket Z-19	1
6.	Z-237 33.64.00	Tensioner II	1
7.	Z-237 33.66.00	Tensioner I	1
8.	Z-237 33.00.27	Chain tensioner I	3
9.	Z-237 33.00.32	Threaded block M12	1
10.	Z-237 33.00.10	Wheel axle Z-19	1
11.	POD-ELZ-000346	Resilient stud 6 x 20 DIN 1481	1
12.	POD-ELZ-000081	Bolt 12 x 75 galv., 8.8 82101	1
13.	25LO10P	Chain link 10B1 R-1 5/8"	2
14.	25T25/32.6/35	Self-lubricating sleeve 25H7/32.6x35	1
15.	23P12OC	Round washer 12 galv., 82005	7
16.	25LO10B1 93OGN	Chain 10B1 93 links	1
17.	23P10 82.005	Round washer 10 galv., 82005 82005	2
18.	23S12/100OC 8.8	Bolt 12 x 100 galv., 8.8 82101 82101	1
19.	23S12/80OC 8.8	Bolt 12 x 80 galv., 8.8 82101 82101	1

No.	No.	Part or assembly name	Volume
20.	23S12/25OC 8.8	Screw 12 x 25 galv., 8.8 82105 82105	2
21.	23NS12OC	Self-locking nut M12 galv., 82175 8 82175 8	2
22.	23NS10OC	Self-locking nut M10 galv., 82175 8 82175 8	2
23.	23Z6/63	Cotter pin 6.3 x 63 galv.	1
24.	25LO10B1 99OGN.	Chain 10B1 99 links	1

9. ROTARY FRAME – PART 3

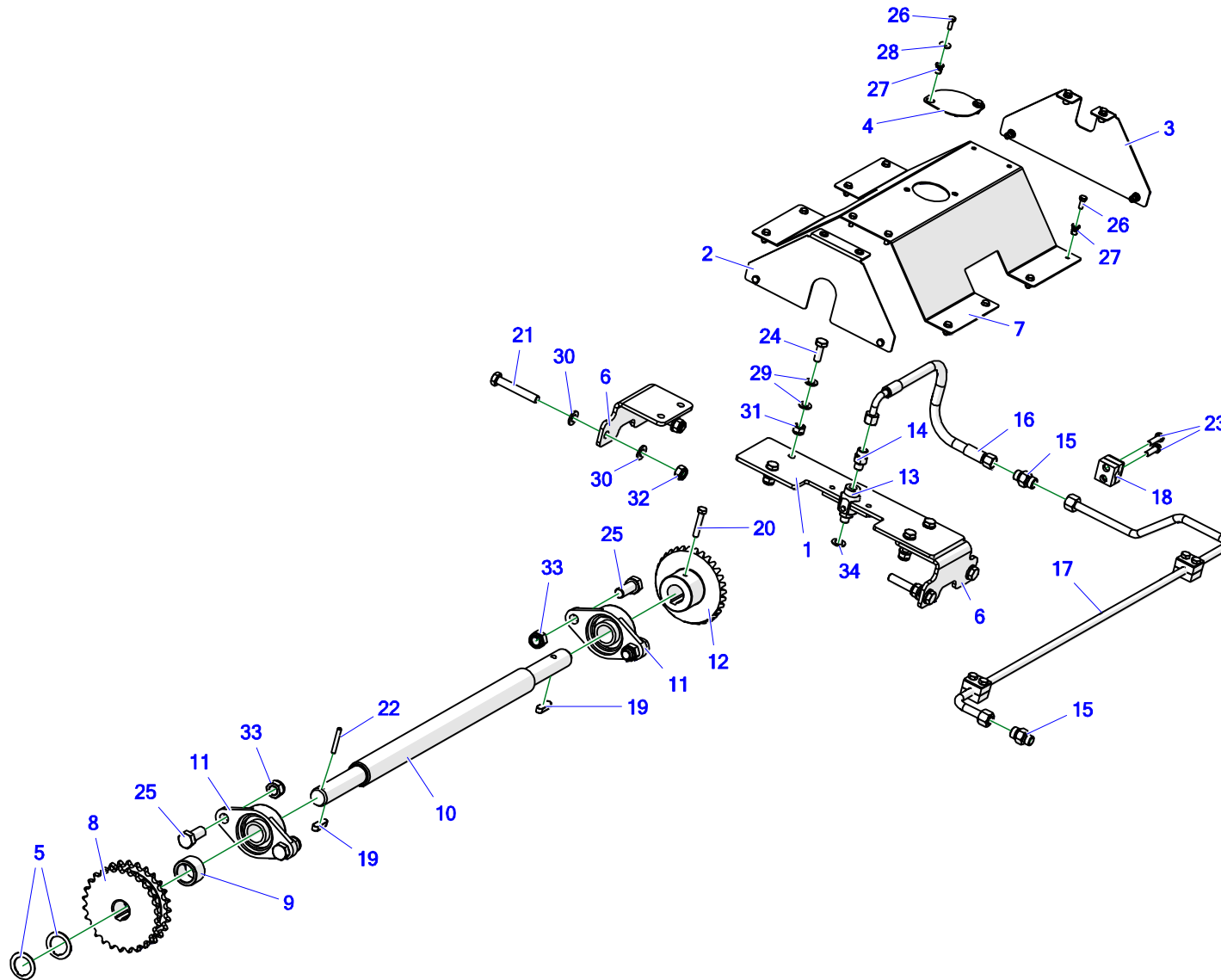


Tabela 9. Rotary frame – part 3

No.	No.	Part or assembly name	Volume
1.	Z593-1E 03.15.00	Union plate assy.	1
2.	Z593-1E 03.13.00	Gearbox guard II assy.	1
3.	Z593-1E 03.14.00	Gearbox guard III assy.	1
4.	Z593-1E 03.00.25	Cover	1
5.	Z593-1E 03.00.33	Drum shaft washer	2
6.	Z593-1E 03.00.22	Plate support	2
7.	Z593-1E 03.00.24	Gear guard I	1
8.	Z593-1E 03.00.28	Double chain wheel Z-27	1
9.	Z593-1E 03.00.29	Shaft spacer bushing	1
10.	Z577-10 03.00.02	Chain wheel drive shaft	1
11.	25L206UCFL	Bearing unit UCFL206	2
12.	POD-EOS-000410	Bevel wheel Z32 M4	1
13.	POD-HPZ-000199	Rotary coupling 1/4" GGIL140	1
14.	POD-HKR-000126	Straight connector 1/4"-M16 x 1.5	1
15.	24KP16/18	Straight coupling, 16 x 18-1.5	2
16.	POD-HPR-000631	AA90/111/8 L=450 Z577-10, assy.	1
17.	POD-HPR-000631	Pipe I Z577-10 dia. 12, assy.	1
18.	POD-HPZ-000066	Handle HBK dia. 12 single	3
19.	23WP10/8/36	Groove 10 x 8 x 36	2

No.	No.	Part or assembly name	Volume
20.	23S8/45OC 8.8	Bolt 8 x 45 galv., 8.8 82105 82105	1
21.	POD-ELZ-000081	Bolt 12 x 75 galv., 8.8 82101	4
22.	23K6/45	Spring pin 6 x 45 DIN 1481	1
23.	23S8/30OC 8.8	Bolt 8 x 30 galv., 8.8 82105 82105	2
24.	23S10/30OC 8.8	Bolt 10 x 30 galv., 8.8 82105 82105	4
25.	23S16/40 8.8OC	Bolt 16 x 40 galv., 8.8 82105 82105	4
26.	23S6/16 8.8OC	Bolt 6 x 16 galv., 8.8 82105 82105 8.8	18
27.	POD-ELZ-000001-1	Flanged cylindrical rivet nut With knurled shank M6 x 14 FE	14
28.	23P6OC030	Round washer 6 galv., coated 82030	2
29.	23P10 82.005	Round washer 10 galv., 82005 82005	8
30.	23P12OC	Round washer 12 galv., 82005	8
31.	23NS10OC	Self-locking nut M10 galv., 82175 8 82175 8	4
32.	23NS12OC	Self-locking nut M12 galv., 82175 8 82175 8	4
33.	23NS16OC	Self-locking nut M16 galv., 82175 8 82175 8	4
34.	POD-HPZ-000121	sealing ring PPM 1/4"	1

10. ROTARY FRAME – THICK SHAFT I

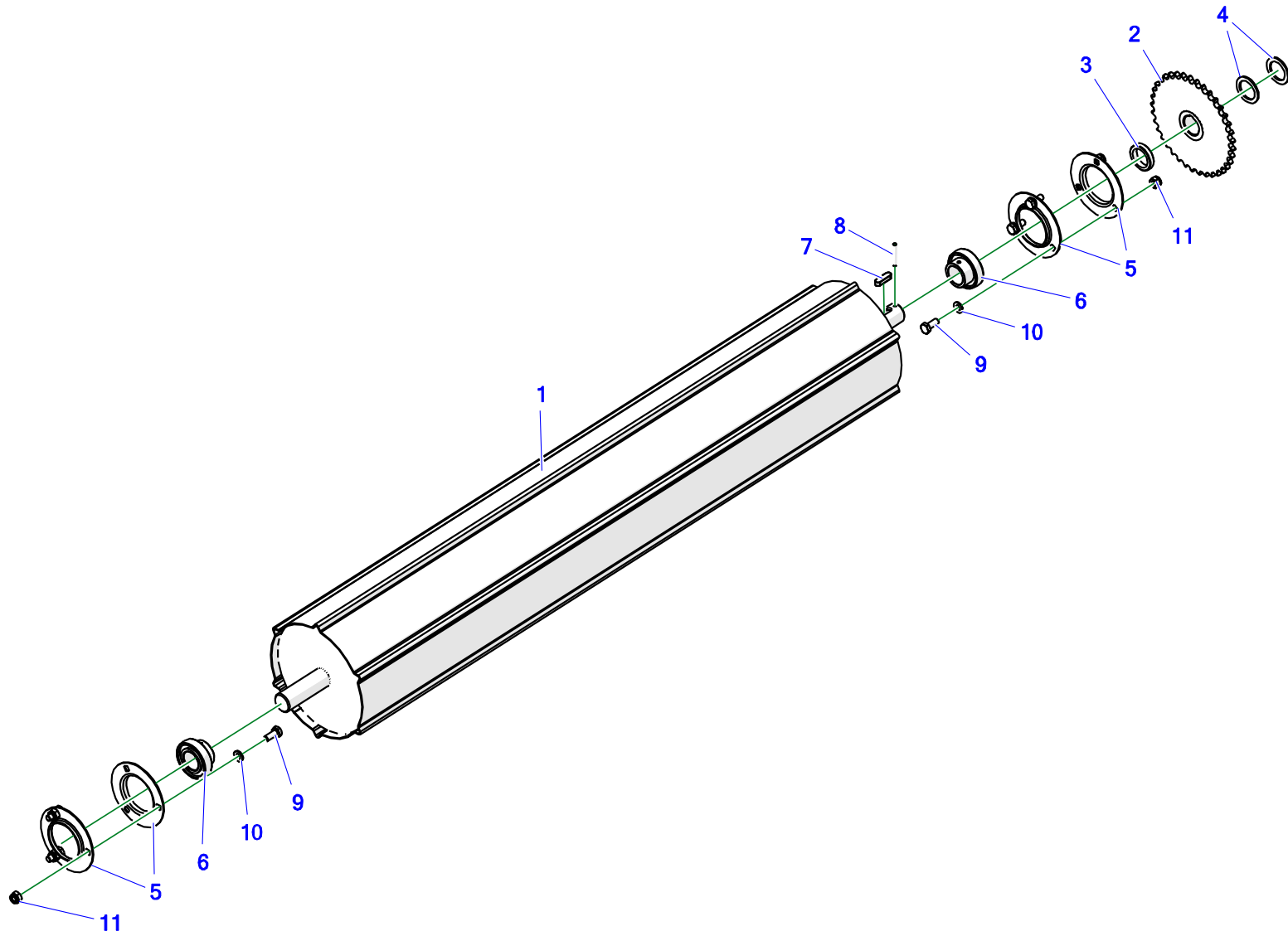


Tabela 10. Rotary frame – thick shaft i

No.	No.	Part or assembly name	Volume
1.	Z-237 33.20.00	Thick shaft I	1
2.	Z-237 33.17.00.1	Sprocket Z-37	1
3.	Z-237 33.00.13	Distance sleeve II	1
4.	Z-237 33.00.14	Washer I	2
5.	25OP207	Metal housing P-207	4
6.	25L207	Bearing FD207	2
7.	23WP10/8/36	Groove 10 x 8 x 36	1
8.	23K6/45	Spring pin 6 x 45 DIN 1481	1
9.	23S10/25OC 8.8	Bolt 10 x 25 galv., 8.8 82105 82105	6
10.	23P10 82.005	Round washer 10 galv., 82005 82005	6
11.	23NS10OC	Self-locking nut M10 galv., 82175 8 82175 8	6

11. ROTARY FRAME – THIN SHAFT II

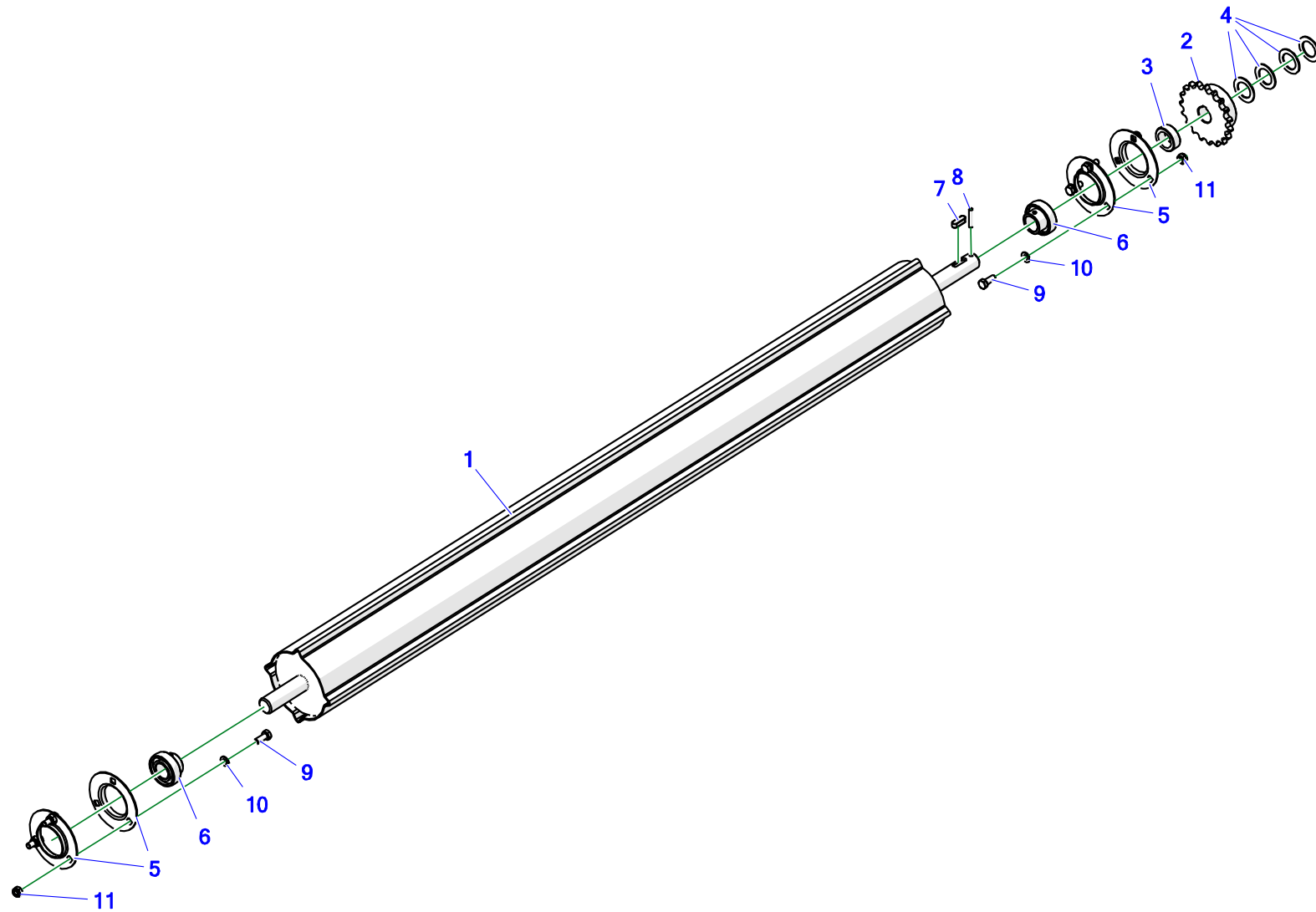


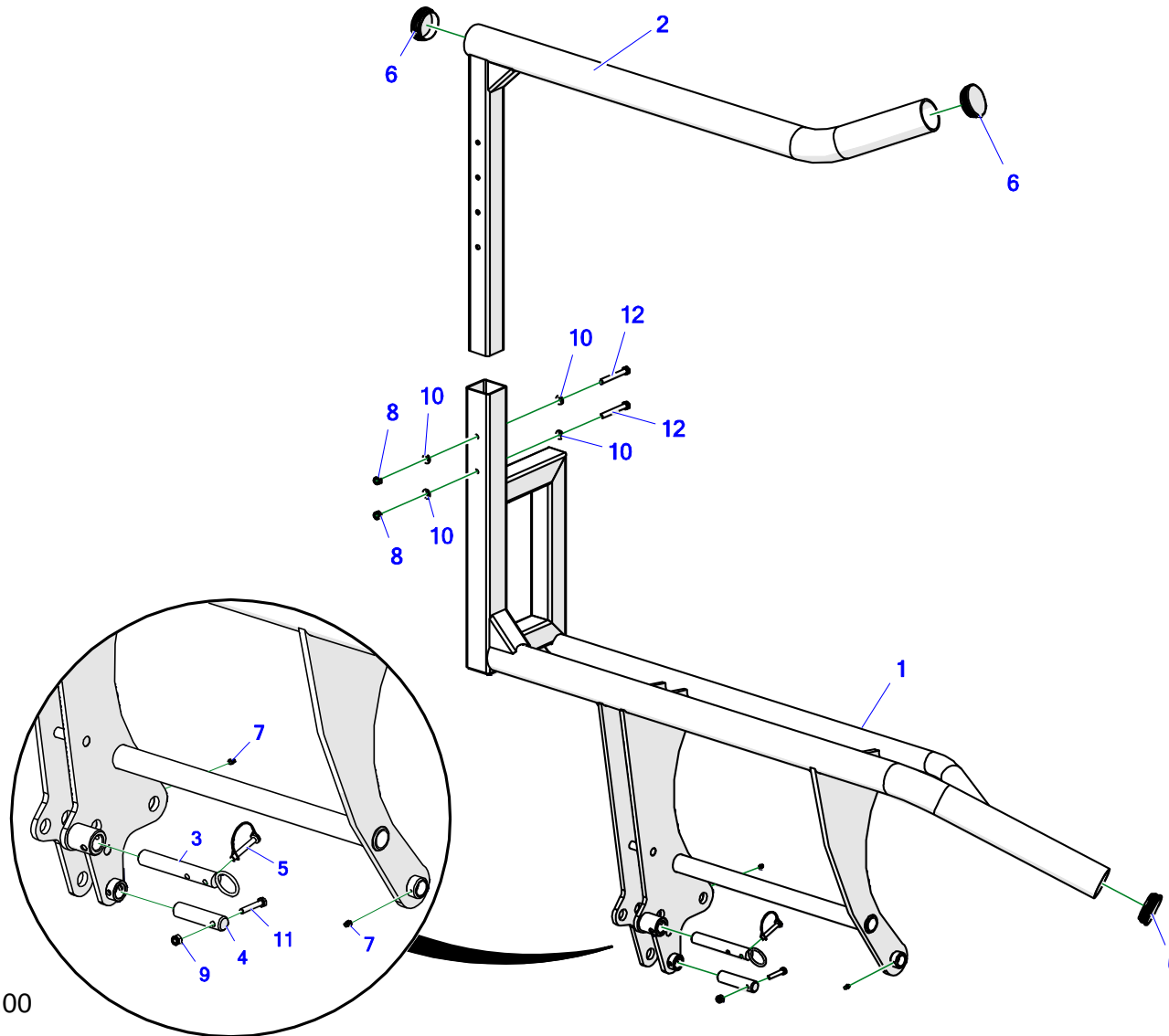
Tabela 11. Rotary frame – thin shaft II

No.	No.	Part or assembly name	Volume
1.	Z-237 33.19.00	Thin shaft II	1
2.	Z-237 33.00.16.1	Sprocket Z-19	1
3.	Z-237 33.00.24*	Distance sleeve IV	1
3.	Z-237 33.00.22**	Distance sleeve III	1
4.	Z-237 33.00.25	Washer V	4
5.	25OP205	Metal housing P-205	4
6.	25L205	Bearing FD205	2
7.	23WP8/7/25	Key groove 8 x 7 x 25 DIN6885A DIN6885A	1
8.	23K6/32	Resilient stud 6 x 32 DIN 1481	1
9.	23S8/20OC 8.8	Bolt 8 x 20 galv., 8.8 82105 82105	6
10.	23P8OOC	Round washer 8 galv., 82005 82005	6
11.	23NS8OC	Self-locking nut M8 galv., 82175 8 82175 8	6

* The spacer sleeve with the index Z-237 33.00.22 is used for the left-hand thin shaft II – see table 9 item 2 and 2*

** The spacer sleeve with the index Z-237 33.00.24 is used for the right-hand thin shaft II – see Table 9 item 2 and 2*

12. LOADING ARM



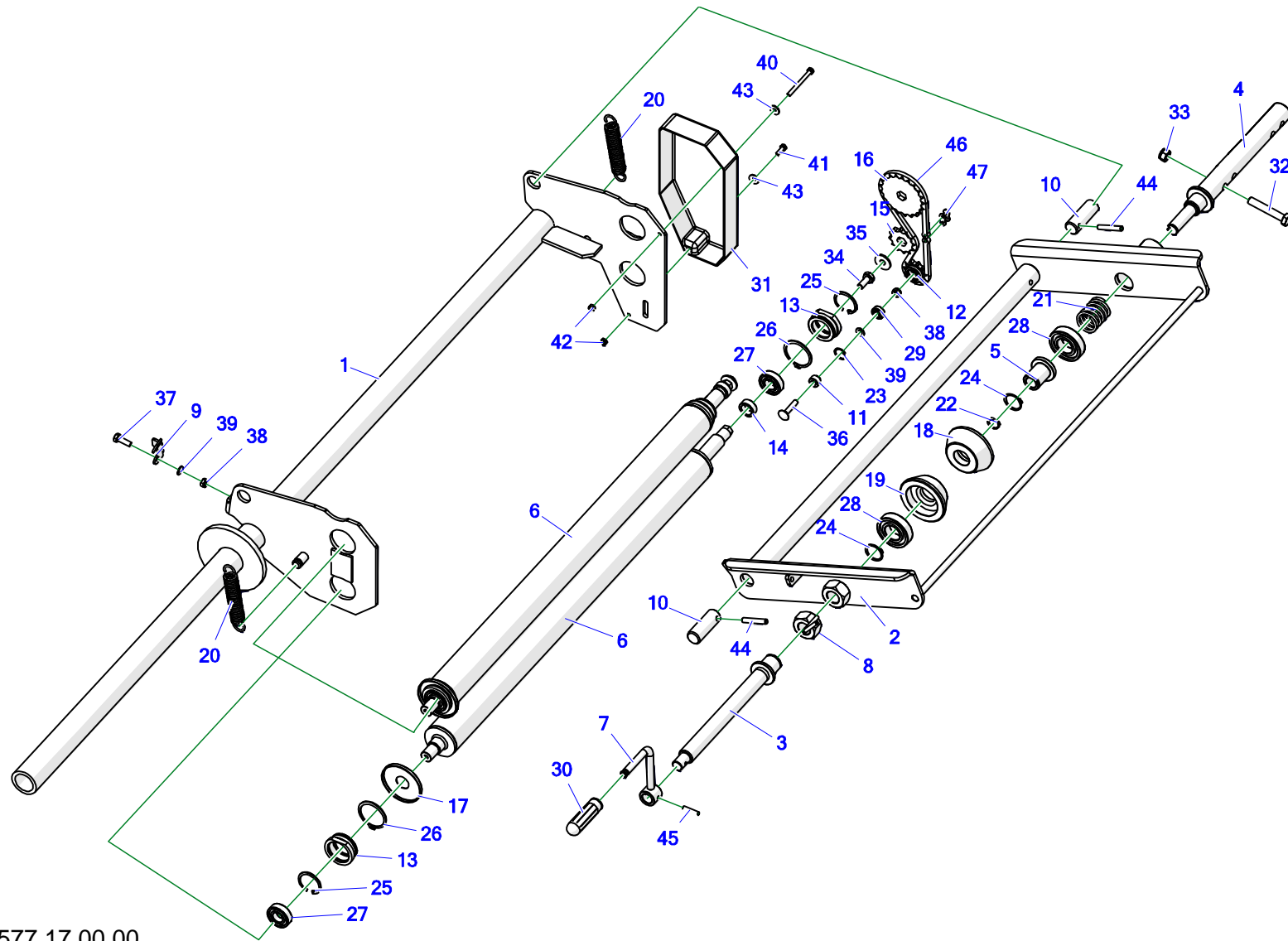
Z577-10 04.00.00

Tabela 12. Loading arm

Loading arm mount. - Z577-10 04.00.00

No.	No.	Part or assembly name	Volume
1.	Z577-10 04.02.00	Loading arm I welded.	1
2.	Z-577 04.03.00	Tube II, assy.	1
3.	Z-577 00.28.00	Loading frame lock pin	1
4.	Z-577 00.00.26	Actuator mounting pin III to the frame annex.	1
5.	POD-ELZ-000543	Tubular cotter pin 10 x 60 A-9.8 C-70	1
6.	POD-TSZ-000246	Round stopper, int. 88.9 mm black (Es-085088969903)	3
7.	23SM	Lubricating nipple M6 x 1.0 straight	2
8.	23NS12OC	Self-locking nut M12 galv., 82175 8 82175 8	2
9.	23NS10OC	Self-locking nut M10 galv., 82175 8 82175 8	1
10.	23P12OC	Round washer 12 galv., 82005	4
11.	23S10/60OC 8.8	Bolt 10 x6 0 galv., 8.8 82101 82101	1
12.	23S12/100OC 8.8	Bolt 12 x 100 galv., 8.8 82101 82101	2

13. REVERSE FILM FEEDER



Z-577 17.00.00

Tabela 13. Reverse film feeder

Reverse film feeder assy. - Z-577 17.00.00

No.	No.	Part or assembly name	Volume
1.	Z-577 17.01.00.1	Mount bracket	1
2.	Z593-1E 07.05.00.2	Foil bracket set	1
3.	Z593-1E 07.06.00.1	Lower bracket, assy.	1
4.	Z593-1E 07.07.00.1	Upper bracket, assy.	1
5.	Z-560 02.00.31.1	Bushing	1
6.	Z-577 17.08.00	Pressure roller	2
7.	Z-560 02.37.00.1	Handle set	1
8.	Z-560 02.38.00	Backnut M27	1
9.	Z-560 02.00.04	Lock	1
10.	Z-560 02.00.07	Foil bracket shaft	2
11.	Z-560 02.00.08	Distance sleeve II	1
12.	Z-560 02.00.09	Chain wheel Z-11	1
13.	Z-560 02.00.25.1	Shaft mounting	4
14.	Z-560 02.00.26	Distance sleeve III	2
15.	Z-560 02.00.30	Sprocket Z-12	1
16.	Z-560 02.00.32	Sprocket Z-21	1
17.	Z-560 02.00.36	Bearing guard	2
18.	Z-560 02.00.41.1	Film mount, upper	1

No.	No.	Part or assembly name	Volume
19.	Z-593 17.00.02	Pressure cone II	1
20.	23SPN3/23/135 MAZ1771/1	Tension spring 3/23/136/34 galv., (maz-1771/B-1)	2
21.	23S4/32/50	Compression spring 4/40/50/7 galv., (maz-2401)	1
22.	23SZ20	Circlip Z20	1
23.	23SW22	Circlip W22	1
24.	23SZ30	Circlip Z30	2
25.	23SW42	Circlip W42	4
26.	23SZ50	Circlip Z50	4
27.	25L6004	Bearing 6004 2RS	4
28.	25L6206	Bearing 6206 2RS	2
29.	25L608 2RS	Bearing 608 2RS	1
30.	25RP	Feeder handle	1
31.	POD-TSZ-000033	Tensioner guard ABS Z577 Z560	1
32.	23S12/70OC 8.8	Bolt 12 x 70 galv., 8.8 82101 82101	1
33.	23NS12OC	Self-locking nut M12 galv., 82175 8 82175 8	1
34.	23S10/25OC 8.8	Bolt 10 x 25 galv., 8.8 82105 82105	2
35.	23P10 OC030	Round washer 10 galv., coated 82030 82030	2
36.	23S8/40P	Carriage bolt 8 x 40 galv., 8.8 82406 82406	1
37.	23S8/25OC8.8	Bolt 8 x 25 galv., 8.8 82105 82105	1

No.	No.	Part or assembly name	Volume
38.	23NS8OC	Self-locking nut M8 galv., 82175 8 82175 8	2
39.	23P8OOC	Round washer 8 galv., 82005 82005	2
40.	23S6/70 105	Bolt 6 x 70 galv. 8.8 82101 82101 8.8	1
41.	23S6/20	Bolt 6 x 20 galv., 8.8 82105 82105 8.8	1
42.	23NS6OC	Self-locking nut M6 galv., 82175 8 82175 8	2
43.	23P6OC030	Round washer 6 galv., coated 82030	2
44.	23K8/50	Spring pin 8 x 50 DIN 1481	2
45.	23K6/30	Spring pin 6 x 30 DIN 1481	1
46.	25LO08B1 43OGN	Chain 08B1 43 links	1
47.	25LO08P	Chain link 08B1 R-1 1/2"	1

14. MODULE

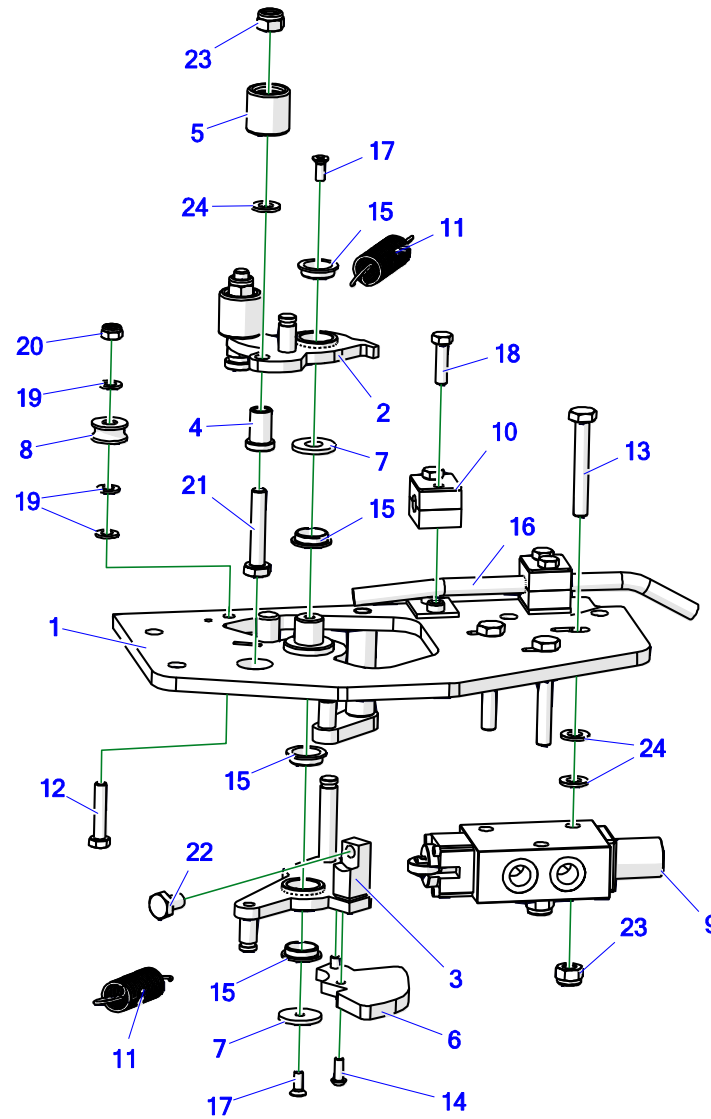
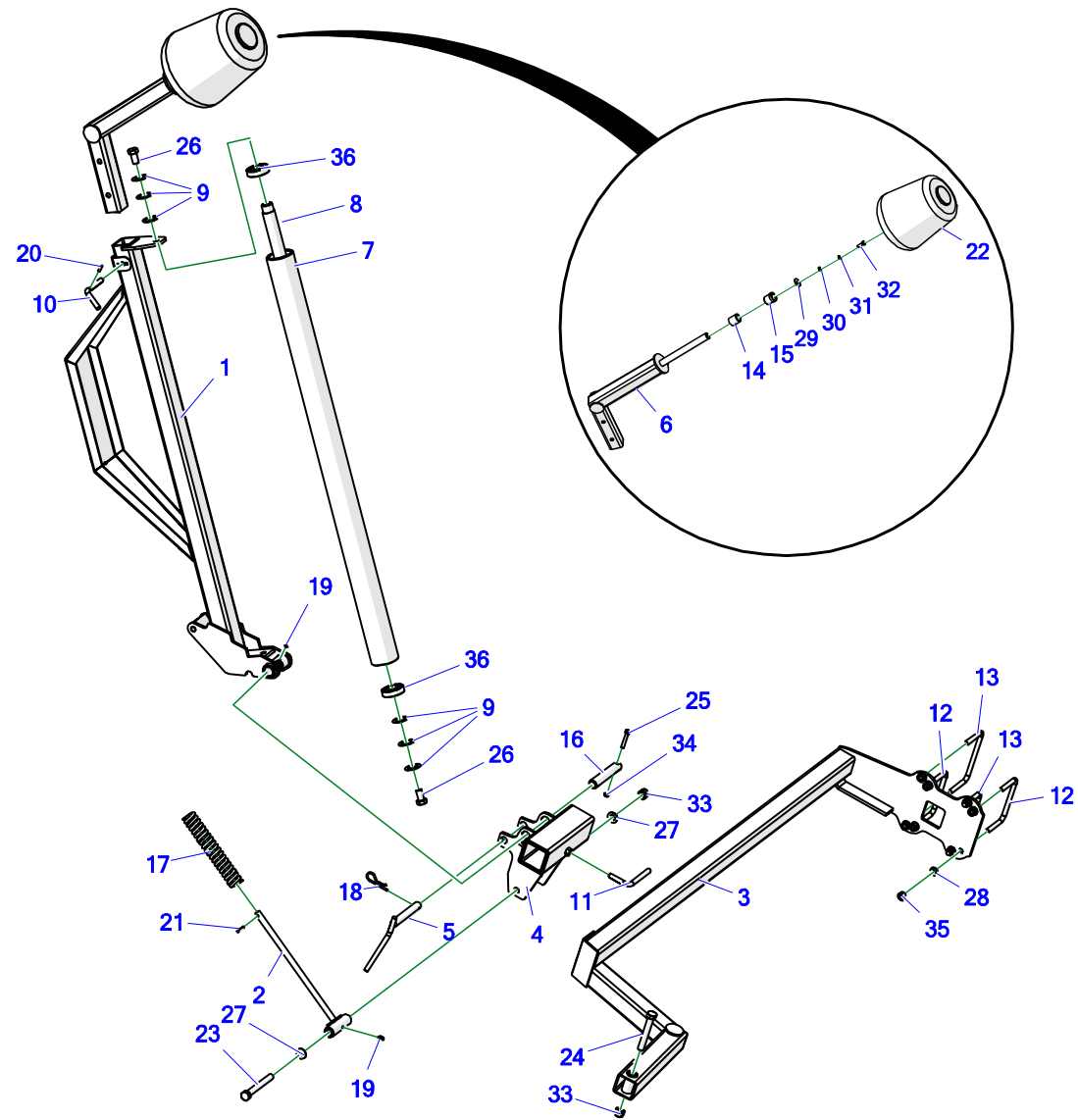


Tabela 14. Module

No.	No.	Part or assembly name	Volume
1.	Z577-10 06.03.00	Module body, complete	1
2.	Z577-10 06.01.00	Upper turntable	1
3.	Z577-10 06.02.00	Lower turntable	1
4.	Z577-10 06.00.01	Roller mount	2
5.	Z577-10 06.00.02	Bumper roller	2
6.	Z577-10 06.00.03	Valve cam	1
7.	Z577-10 06.00.04	Axle washer	2
8.	Z577-10 06.00.05	Cable roller	1
9.	POD-HZW-000097	Three way valve with a roller IF3/8"2C3M4(2-1)	1
10.	POD-HPZ-000066	Handle HBK dia. 12 single	2
11.	POD-SPR-000060	spring maz-6531 galv., (1800025)-feraboli	2
12.	POD-ELZ-000526	Bolt 8 x 40 galv., 8.8 82101	1
13.	POD-ELZ-000741	Bolt 10 x 70 galv., 8,8 82101	3
14.	POD-ELZ-000777	Mushroom head bolt Allen bolt 6 x 16 ISO 7380 galv. 8.8	2
15.	POD-LOZ-000114	F type iglidur G bearing GFM-2023-07	4
16.	POD-HPR-000631	Pipe II Z577-10 dia. 12	1
17.	23W6/16	Screw 6 x 16 galv., 82208	2
18.	23S8/30OC 8.8	Bolt 8 x 30 galv., 8.8 82105 82105	4
19.	23P8OOC	Round washer 8 galv., 82005 82005	3

No.	No.	Part or assembly name	Volume
20.	23NS8OC	Self-locking nut M8 galv., 82175 8 82175 8	1
21.	23S10/55OC	Bolt 10 x 55 galv., 8.8 82105 82105	2
22.	23S10/16OC 8.8	Bolt 10 x 16 galv., 8.8 82105 82105	1
23.	23NS10OC	Self-locking nut M10 galv., 82175 8 82175 8	5
24.	23P10 82.005	Round washer 10 galv., 82005 82005	8

15. BALE TIPPER



Z577-0U

Tabela 15. Bale tipper

Bale tipper for the wrapper – Z577-0U

No.	No.	Part or assembly name	Volume
1.	Z-577 05.01.00	Bale vertical positioning arm	1
2.	Z-577 05.01.600	Backstay	1
3.	Z-577 05.02.00.1	Attachment frame	1
4.	Z-577 05.03.00	Slider	1
5.	Z-577 05.03.500	Lock pin, assy.	1
6.	Z-577 05.04.010	Support complete	1
7.	Z-577 05.01.011	Tube	1
8.	Z-577 05.01.012	Shaft	1
9.	Z-577 05.01.013	Shaft washer assy.	6
10.	Z-577 05.01.72	Cotter pin	1
11.	Z-577 05.03.80	Lock	1
12.	Z-577 05.02.60	Clamp	2
13.	Z-577 05.02.70	Tipper fixing clamp	2
14.	Z-577 05.04.04	Bevel wheel hub	1
15.	Z-577 05.04.05	Bevel wheel hub II	1
16.	Z-577 05.03.70	Pin	1
17.	POD-SPR-000055	Compression spring 8/40/125/15.5 galv., (maz-4792) (KIG)	1
18.	23ZRFI4	Elastic single cotter pin 4 (R-letter shaped, single)	1

No.	No.	Part or assembly name	Volume
19.	23SM	Lubricating nipple M6 x 1.0 straight	2
20.	POD-ELZ-000346	Resilient stud 6 x 20 DIN 1481	1
21.	23K6/32	Resilient stud 6 x 32 DIN 1481	1
22.	25KSO	Bevel wheel of the vertical bale drop-off gear Z-577	1
23.	23S16/140OC 8.8	Bolt 16 x 140 galv., 8.8 82101 82101	1
24.	23S16/110OC 8.8	Bolt 16 x 110 galv., 8.8 82101 82101	1
25.	23S8/50OC	Bolt 8 x 50 galv., 8.8 82101 82101	1
26.	23S16/30OC 5.8-B	Screw 16 x 30 galv., 8.8 82105 82105	2
27.	23P16OOC	Round washer 16 galv., 82005 82005	2
28.	23P12OC	Round washer 12 galv., 82005	8
29.	23P10 OC030	Round washer 10 galv., coated 82030 82030	1
30.	23P8OOC	Round washer 8 galv., 82005 82005	1
31.	23P8SPOC	Spring washer 8.2 galv., 82008 82008	1
32.	23S8/25OC8.8	Bolt 8 x 25 galv., 8.8 82105 82105	1
33.	23NS16OC	Self-locking nut M16 galv., 82175 8 82175 8	2
34.	23NS8OC	Self-locking nut M8 galv., 82175 8 82175 8	1
35.	23NS12OC	Self-locking nut M12 galv., 82175 8 82175 8	8
36.	25L6206	Bearing 6206 2RS	2

16. HYDRAULIC FILM CUTTER

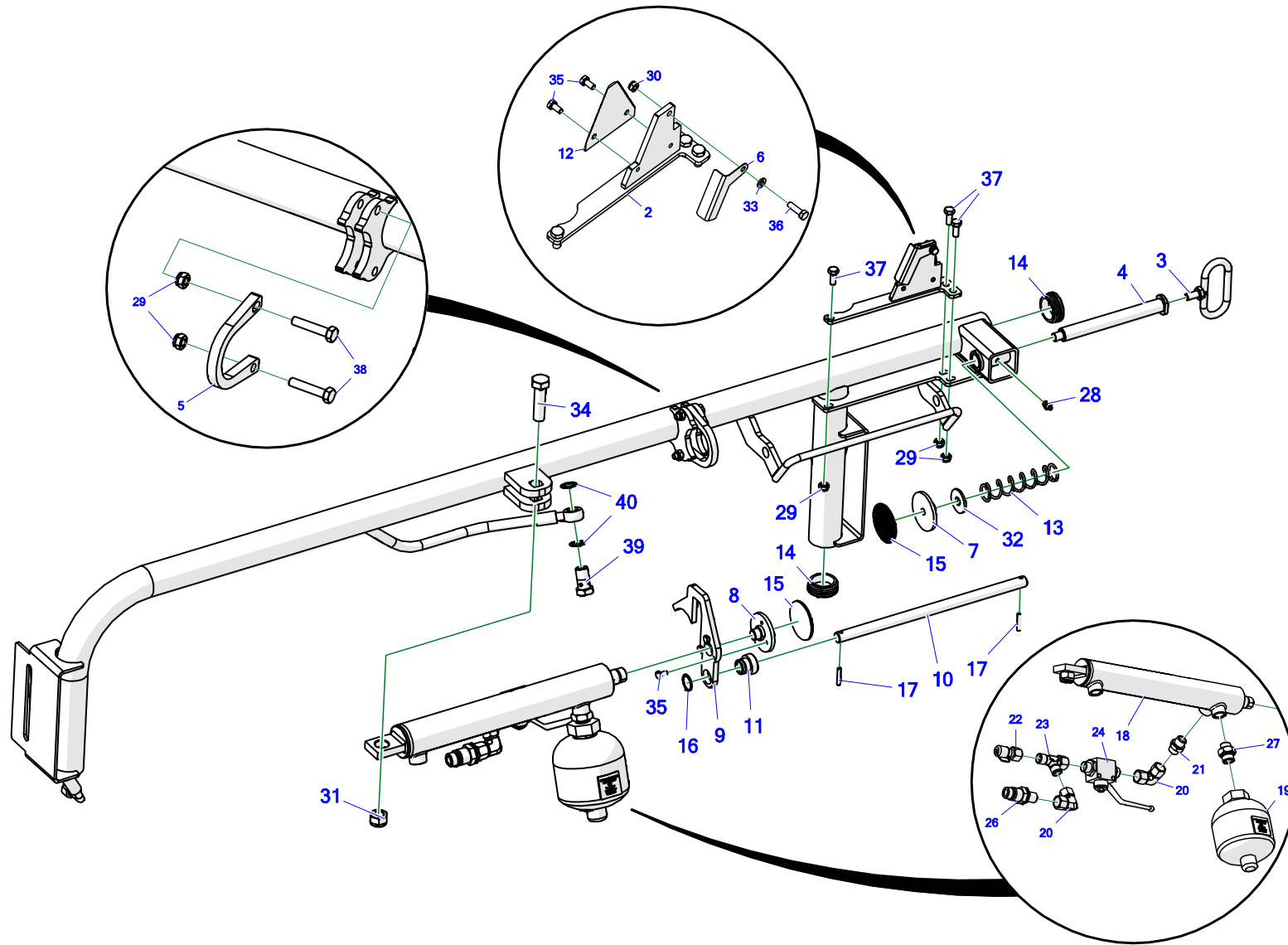


Tabela 16. Hydraulic film cutter

No.	No.	Part or assembly name	Volume
1.	Z577-10 10.01.00	Cutter frame	1
2.	Z593-1E 10.02.00	Cutter bracket, complete	1
3.	Z593-1E 10.03.00	Pressure clamp handle	1
4.	Z593-1E 10.00.01	Pressure clamp axle	1
5.	Z593-1E 10.00.02	0.18 Actuator mount II	1
6.	Z593-1E 10.00.03	Blade cover	1
7.	Z593-1E 10.00.05	Pressure clamp II	1
8.	Z593-1E 10.00.06	Pressure clamp I	1
9.	Z593-1E 10.00.07	Guide plate	1
10.	Z593-1E 10.00.12	Guide rod	1
11.	Z593-1E 10.00.13	Slide bushing	1
12.	POD-NOZ-000023	Cutter blade Z593	1
13.	POD-SPR-000002-1	Spring T241-1.004.000.005 (not to be purchased) changed 09/06/2010	1
14.	POD-TSZ-000066	Round stopper, int. 45 mm white (Es-111610)	2
15.	POD-TSZ-000037 [D60]	Corrugated rubber plate #4-(CSG-4/1200 narrow, stomil) [D60]	0.0032
16.	POD-ELZ-000646	Circlip Z22	1
17.	POD-ELZ-000344	Spring pin 5 x 30 DIN 1481	2
18.	POD-HSL-000130	Cylinder UCJ250-40/22/240*L-418	1
19.	POD-HPZ-000209	Hydraulic accumulator 0.5 L (D0.50-210 G1/2") -40bar	1

No.	No.	Part or assembly name	Volume
20.	POD-HKR-000120	AA M18 x 1.5 12L adjustable elbow connector (2 x nut)	2
21.	POD-HKR-000040	Straight connection 18 x 18 - 1.5	1
22.	POD-HKR-000160	Measuring connection (minimess SMK20-12L-PK-C6F) (16 x 2 nut x 18 x 1.5 nut)	1
23.	POD-HKR-000121	T-connector, asymmetrical 18 x 18 x 18-1.5 12L with nut on side	1
24.	POD-HZW-000032	Ball valve RS2 12L (with holes)	1
25.	POD-HPR-000631	A90RNM-114-8 L=1300 assy.	1
26.	24ZWE13-M18X1.5	Plug valve, Euro 13, M18 x 1.5	1
27.	24KP1/2 18	Straight connection 1/2 edx18-1.5	1
28.	23SM8	Lubricating nipple M8 x 1.0 straight	1
29.	23NS8OC	Self-locking nut M8 galv., 82175 8 82175 8	5
30.	23NS6OC	Self-locking nut M6 galv., 82175 8 82175 8	1
31.	23NS16OC	Self-locking nut M16 galv., 82175 8 82175 8	1
32.	23P12OOC	Round washer 12 galv., coat. 82030	1
33.	23P6OOC	Round washer 6 galv., 82005 82005	1
34.	23S16/60	Bolt 16 x 60 galv., 8.8 82105 82105	1
35.	23S6/12OC 8.8	Bolt 6 x 12 galv. 8.8 82105 82105 8.8	5
36.	23S6/20	Bolt 6 x 20 galv., 8.8 82105 82105 8.8	1
37.	23S8/20OC 8.8	Bolt 8 x 20 galv., 8.8 82105 82105	3
38.	23S8/40OC 8.8	Bolt 8 x 40 galv., 8.8 82105 82105	2

No.	No.	Part or assembly name	Volume
39.	24SO18/1.5	Eye bolt M18 x 1.5 16 L31	1
40.	24U18	Copper washer diam. 18 x 24 x 1.5	2

17. HYDRAULICS – WORK TABLE

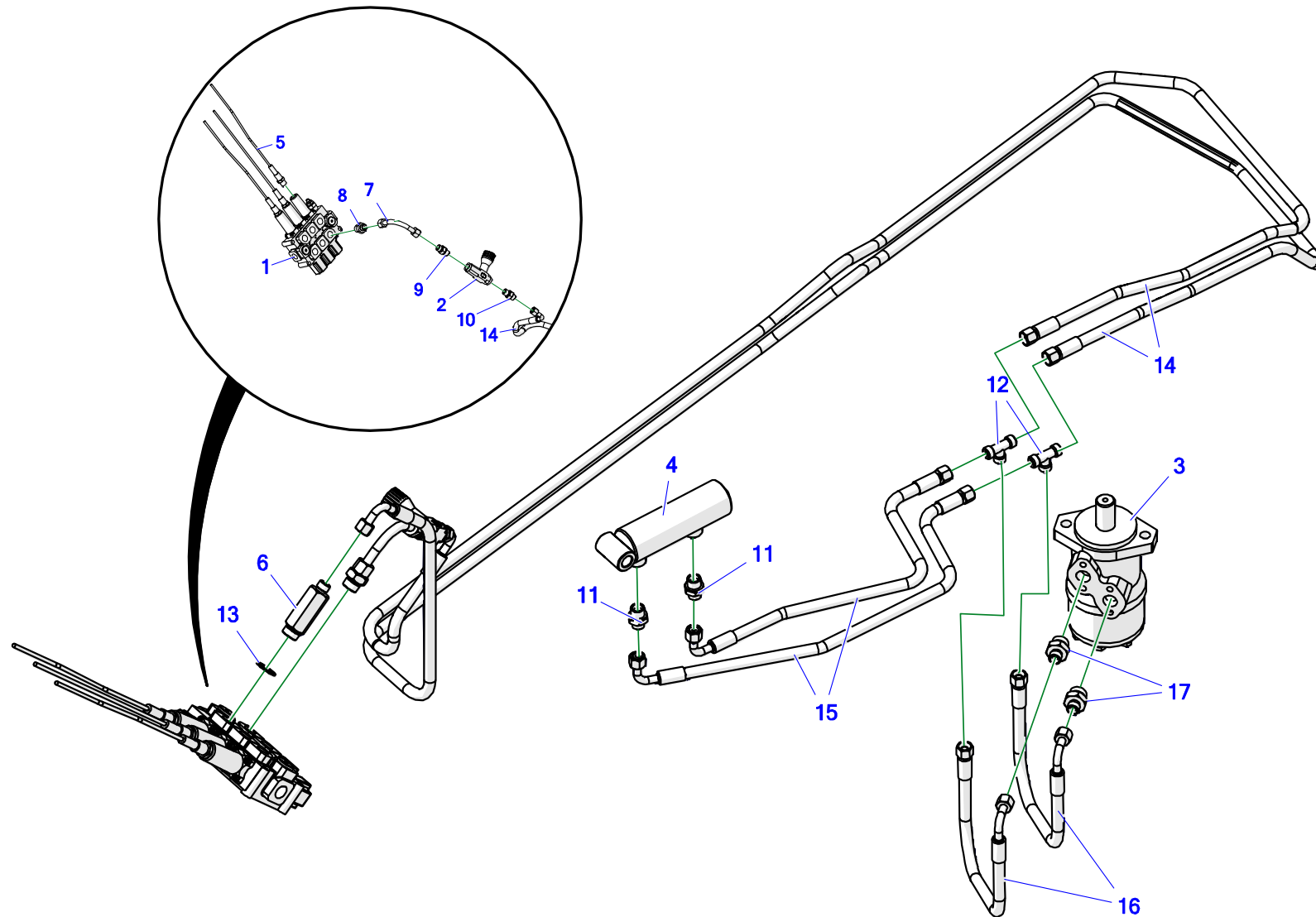


Tabela 18. Hydraulics – work table

No.	No.	Part or assembly name	Volume
1.	24RMD3 LINKOWY	MD3 rope distributor Q45	1
2.	24ZD	Throttle check valve VRFU 90-3/8"	1
3.	24S200	OMR 200 (BMR) hydraulic motor	1
4.	24SCJ2F40/22/65	Actuator 40/22/65*L-180	1
5.	24LS2,5M	Control wire L-2500 (fork)	3
6.	24K1/2-16X1.5 L-59	Straight connector 1/2 16 x 1.5 L-59	1
7.	24KZ18/18	Angle nipple 18/18 x 1.5 (short tube)	1
8.	24KP1/2 18	Straight connection 1/2 edx18-1.5	1
9.	24KP3/8 18	Straight connector 3/8 x 18-1.5 12LR	1
10.	24KP3/8 16	Straight connector 3/8 x 16-1.5	1
11.	POD-HKR-000076	Straight connector 18 x 1.5 - 16 x 1.5	2
12.	24KT16/16/16	Tee connector 16 x 16 x 16 10L	2
13.	24UPPM22	Metal & rubber washer, PPM22 30 x 22	1
14.	POD-HPR-000631	AA90/111/8 L=2900 Z577-10 (2
15.	POD-HPR-000631	AA90/111/8 L=700 Z577-10 (2
16.	POD-HPR-000631	AA90/111/8 L=300 Z577-10 (2
17.	24KP1/2 16	Straight connection 1/2 edx16-1.5	2

18. HYDRAULIC SYSTEM – FILM CUTTER, MOVABLE FRAME

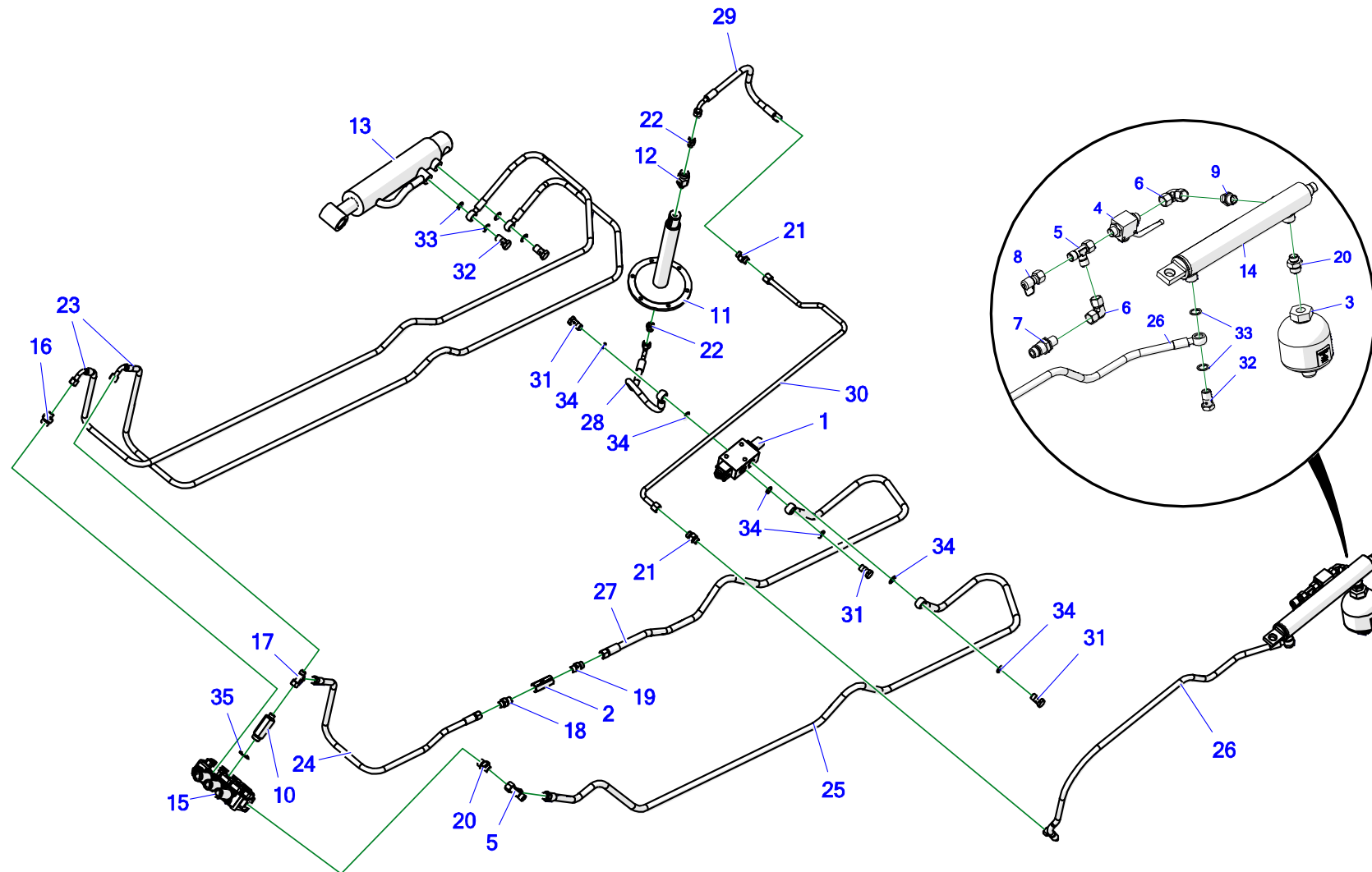


Tabela 19. Hydraulic system – film cutter, movable frame

No.	No.	Part or assembly name	Volume
1.	POD-HZW-000097	Three way valve with a roller IF3/8"2C3M4(2-1)	1
2.	POD-HZW-000035	Non-return valve VU 3/8"	1
3.	POD-HPZ-000209	Hydraulic accumulator 0.5 L (D0.50-210 G1/2") -40bar	1
4.	POD-HZW-000032	Ball valve RS2 12L (with holes)	1
5.	POD-HKR-000121	T-connector, asymmetrical 18 x 18 x 18-1.5 12L with nut on side	2
6.	POD-HKR-000120	AA M18 x 1.5 12L adjustable elbow connector (2 x nut)	2
7.	24ZWE13-M18X1.5	Plug valve, Euro 13, M18 x 1.5	1
8.	POD-HKR-000160	Measuring connection (minimes SMK20-12L-PK-C6F) (16 x 2 nut x 18 x 1.5 nut)	1
9.	POD-HKR-000040	Straight connection 18 x 18 - 1.5	1
10.	24K1/2-16X1.5 L-59	Straight connector 1/2 16 x 1.5 L-59	1
11.	Z593-1E 02/04/2000	Axle, complete	1
12.	POD-HPZ-000199	Rotary coupling 1/4" GGIL140	1
13.	24SCJ63/32/200	Cylinder 63/36/200 SMT2S *L-446	1
14.	POD-HSL-000130	Cylinder UCJ250-40/22/240*L-418	1
15.	24RMD3 ROPE	MD3 rope distributor Q45	1
16.	24KP1/2 16	Straight connection 1/2 edx16-1.5	1
17.	POD-HKR-000063	T-connector, asymmetrical 16 x 16 x 16-1.5 10L with side nut	1
18.	24KP3/8 16	Straight connector 3/8 x 16-1.5	1
19.	24KP3/8 18	Straight connector 3/8 x 18-1.5 12LR	1

No.	No.	Part or assembly name	Volume
20.	24KP1/2 18	Straight connection 1/2 edx18-1.5	1
21.	24KP16/18	Straight coupling, 16 x 18-1.5	2
22.	POD-HKR-000126	Straight connector 1/4"-M16 x 1.5	2
23.	POD-HPR-000631	A90RNM/114/8 L=2400 Z577-10 (2
24.	POD-HPR-000631	AA/111/8 L-500	1
25.	POD-HPR-000631	ARNR/111/10 L=2500 Z577-10 (1-1) assy.	1
26.	POD-HPR-000631	A90RNM-114-8 L=1300 assy.	1
27.	POD-HPR-000631	ARNR/111/10 L=2000 Z577-10 (1-1) assy.	1
28.	POD-HPR-000631	A90RNR/131/10 L=500 Z577-10, assy.	1
29.	POD-HPR-000631	AA90/111/8 L=450 Z577-10, assy.	1
30.	POD-HPR-000631	Pipe I Z577-10 dia. 12, assy.	1
31.	POD-HKR-000070	Eye bolt 3/8"	3
32.	24SO18/1.5	Eye bolt M18 x 1.5 16 L31	3
33.	24U18	Copper washer diam. 18 x 24 x 1.5	6
34.	POD-HPZ-000071	Metal & rubber washer PPM 3/8"	6
35.	24UPPM22	Metal & rubber washer, PPM22 30 x 22	1

19. HYDRAULICS – LOADING ARM

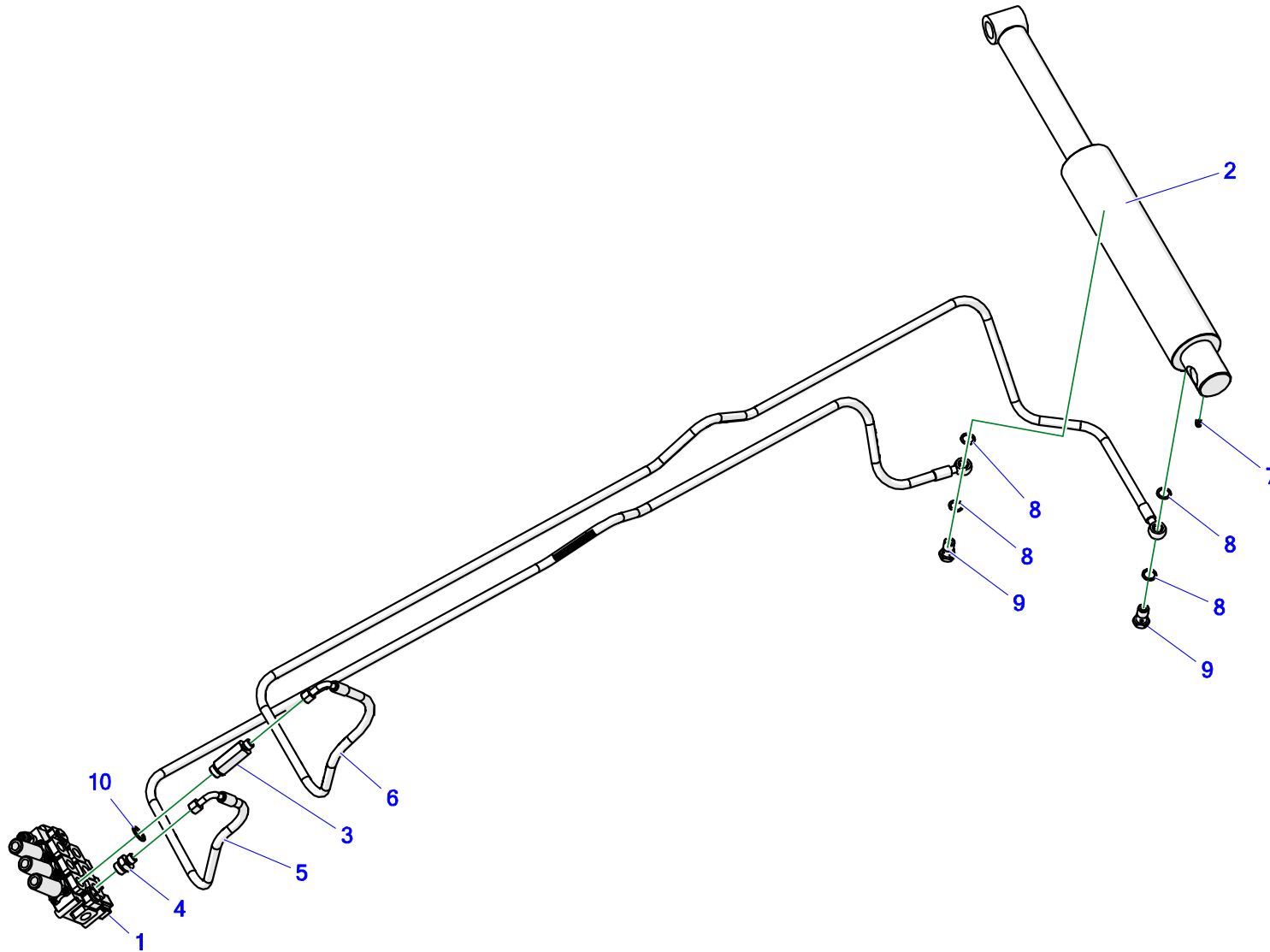


Tabela 20. Hydraulics – loading arm

No.	No.	Part or assembly name	Volume
1.	24RMD3 LINKOWY	MD3 rope distributor Q45	1
2.	24SCJ2F80/50/275	Actuator 80/50/275*L-520	1
3.	24K1/2-16X1.5 L-59	Straight connector 1/2 16 x 1.5 L-59	1
4.	24KP1/2 16	Straight connection 1/2 edx16-1.5	1
5.	POD-HPR-000631	A90RNM/114/8 L=2450 Z577-10 (1-1) assy.	1
6.	POD-HPR-000631	A90RNM/114/8 L=2650 Z577-10 (1-1) assy.	1
7.	23SM	Lubricating nipple M6 x 1.0 straight	1
8.	24U18	Copper washer diam. 18 x 24 x 1.5	4
9.	24SO18/1.5	Eye bolt M18 x 1.5 16 L31	2
10.	24UPPM22	Metal & rubber washer, PPM22 30 x 22	1

20. HYDRAULICS – CONTROL LEVERS

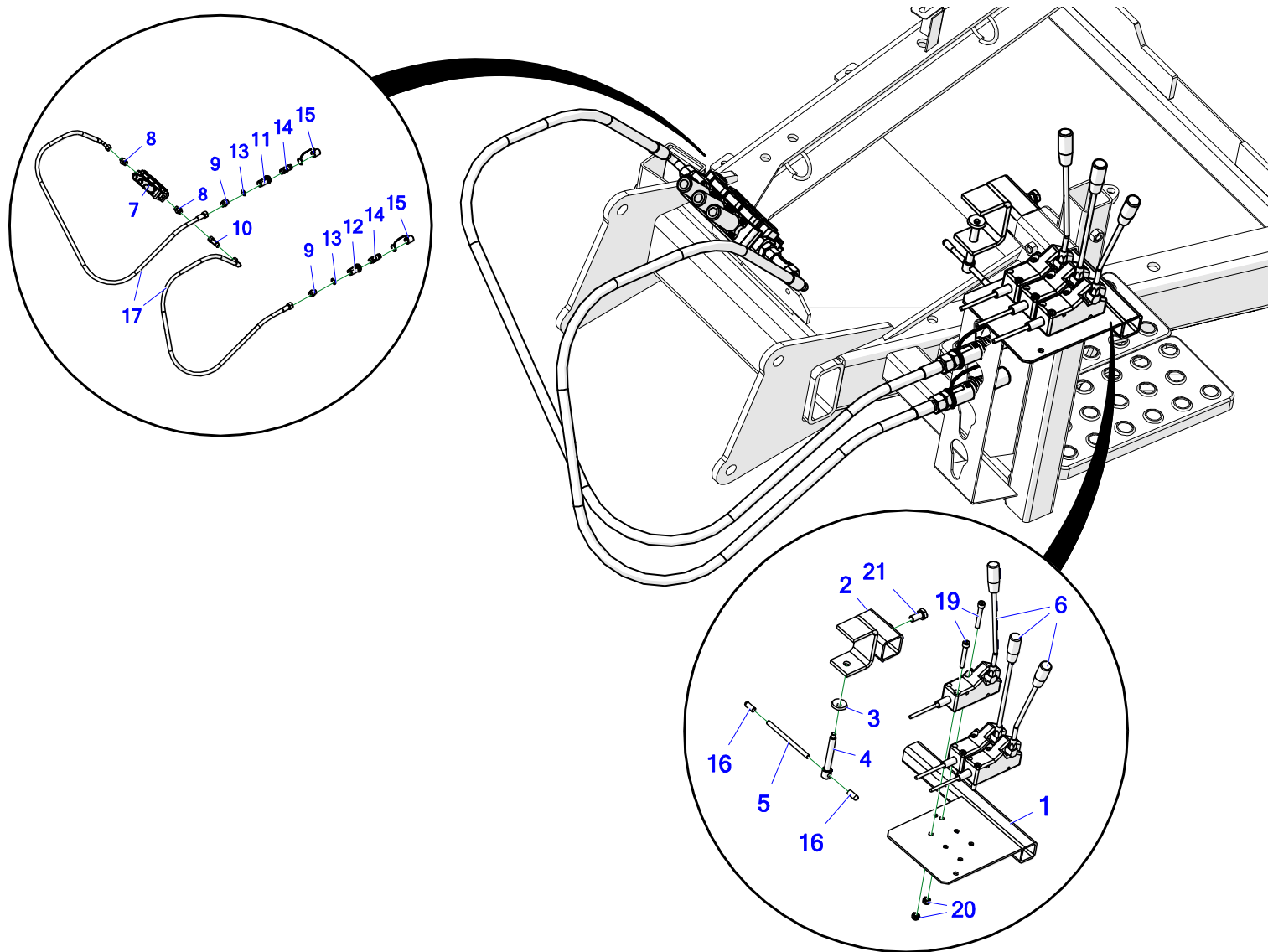
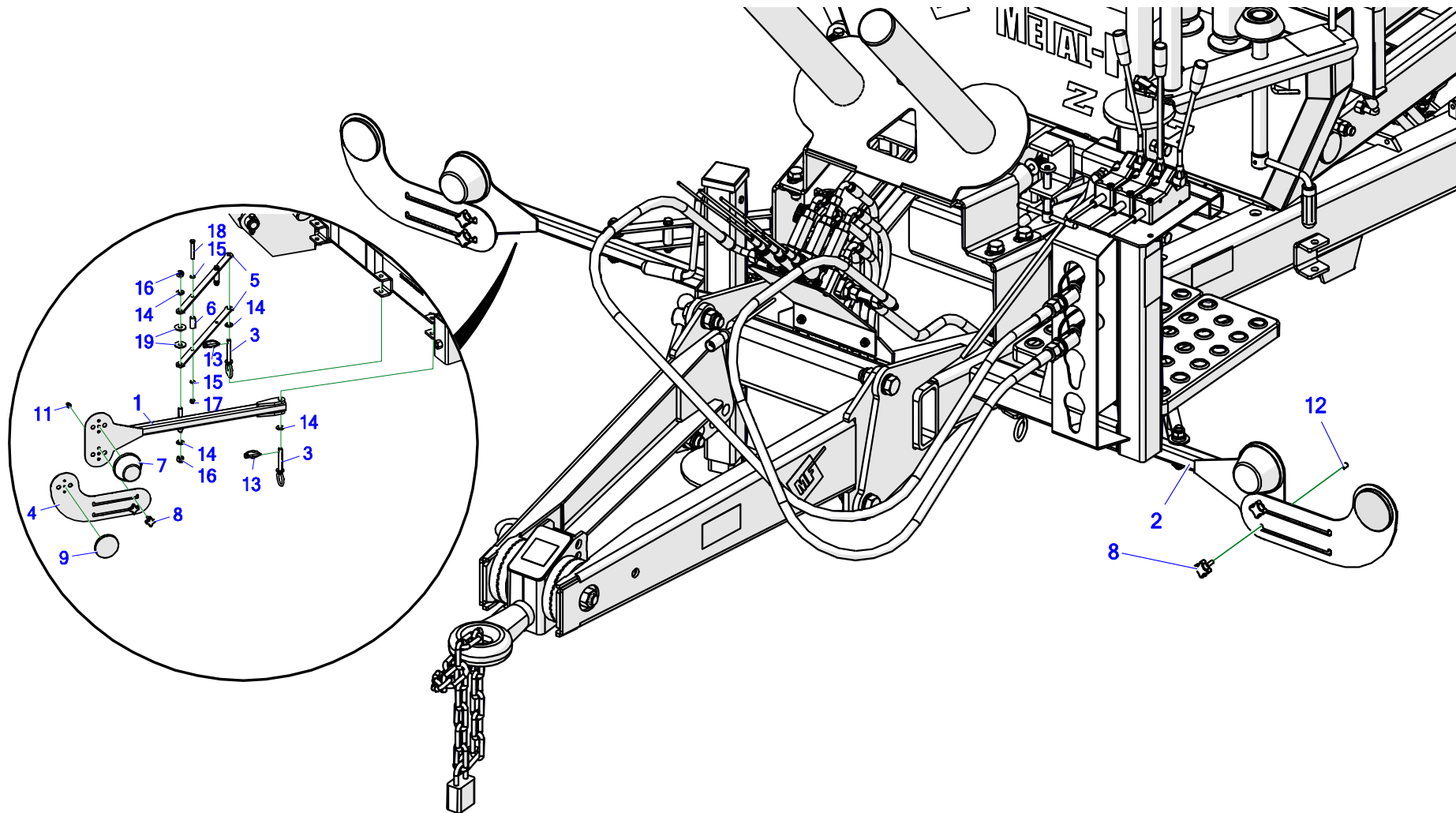


Tabela 21. Hydraulics – control levers

No.	No.	Part or assembly name	Volume
1.	Z-577 00.13.00	Separator device support	1
2.	Z-237 00.54.10	Handle body	1
3.	Z-237 215.000.004	Cap	1
4.	Z-237 00.54.30	Special bolt	1
5.	Z-237 00.54.04	Knob	1
6.	24DZS	Rope controller lever	3
7.	24RMD3 LINKOWY	MD3 rope distributor Q45	1
8.	24KP1/2 18	Straight connection 1/2 edx18-1.5	2
9.	24K1/2 22	Straight connector 1/2 edx22-1.5 15L	2
10.	POD-HKR-000121	T-connector, asymmetrical 18 x 18 x 18-1.5 12L with nut on side	1
11.	POD-HPZ-000309	EURO plug marking holder green +	1
12.	POD-HPZ-000310	EURO plug marking holder green -	1
13.	24UPPM22	Metal & rubber washer, PPM22 30 x 22	2
14.	24ZWE13	EURO plug valve13 M22 x 1.5	2
15.	24ZWNE13	Cap for EURO valve plug 13 (green, yellow, blue, red)	2
16.	POD-TSZ-000142	Round plug, ext. 9.8 mm black (Es-12888)	2
17.	POD-HPR-000631	A90/114/10 L-2200	2
18.	23N12	Nut m12 black, 82144 5 82144 5	1
19.	23SI8X55	Allen bolt 8 x 55 galv., 8.8 82302	6

No.	No.	Part or assembly name	Volume
20.	23NS8OC	Self-locking nut M8 galv., 82175 8 82175 8	6
21.	23S12/25OC 8.8	Screw 12 x 25 galv., 8.8 82105 82105	1

21. LIGHTS – FRONT



Z577-10 09.00.00

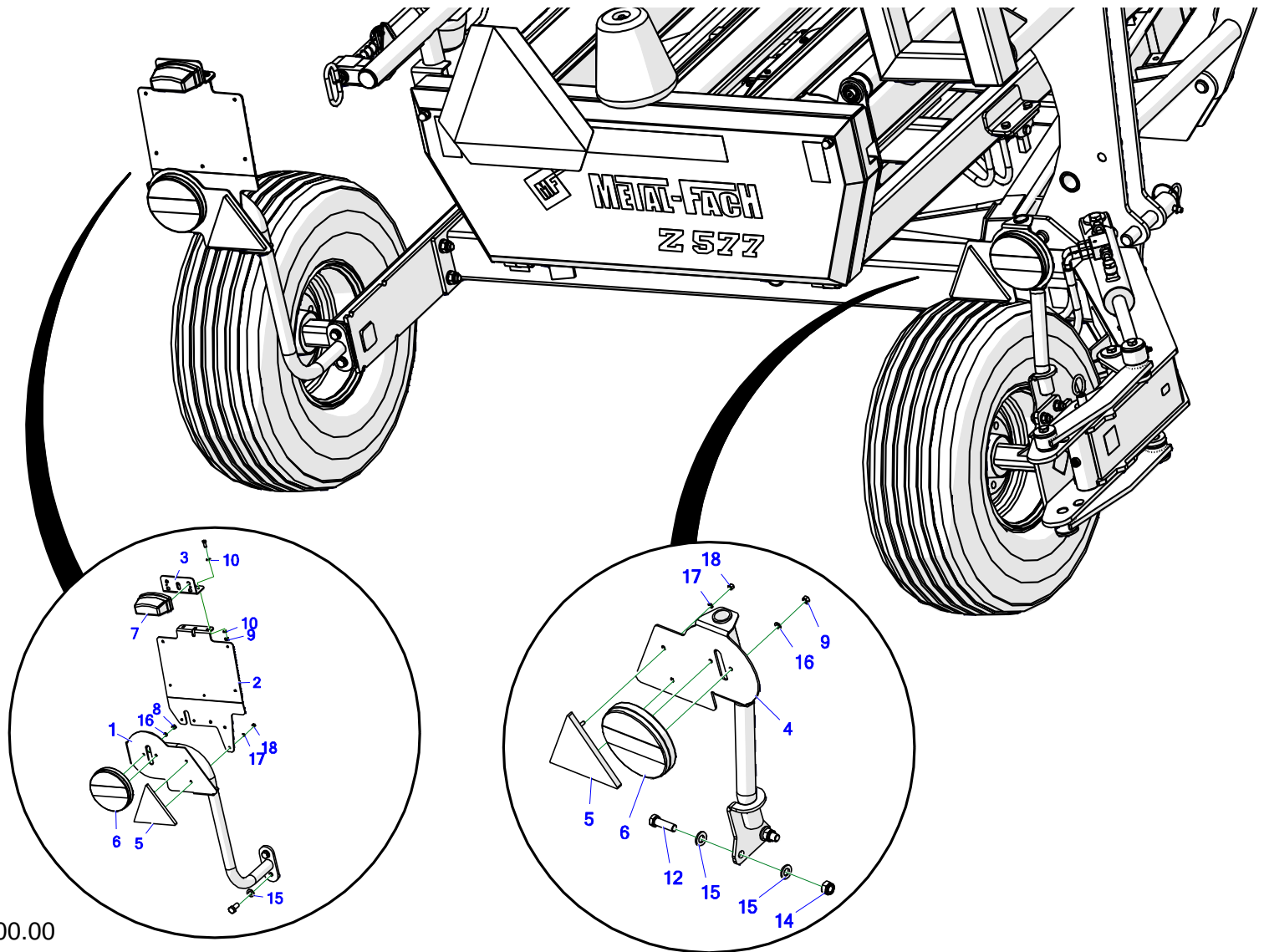
Tabela 22. Lights – front

Electrics and lighting assy. - Z577-10 09.00.00

No.	No.	Part or assembly name	Volume
1.	Z577-10 09.30.10	Right headlight bracket, assy.	1
2.	Z577-10 09.40.10	Left headlight bracket, assy.	1
3.	Z577-10 09.30.20	Lights bracket pin	4
4.	Z577-10 09.30.03	Front reflector bracket	2
5.	Z577-10 09.30.01	Right lock beam	4
6.	Z577-10 09.30.02	Lock spacer sleeve	4
7.	26LP	Front position light WE92-12z	2
8.	POD-KAB-000030-1	Knob P1M6 x 20	4
9.	POD-ELK-000089	Round reflector, white	2
10.	POD-ELK-000339	Round reflector orange No. 844	2
11.	POD-ELZ-000001-1	Flanged cylindrical rivet nut With knurled shank M6 x 14 FE	2
12.	23NM6	Flanged rivet nut M6 steel	2
13.	23PR6	cotter pin with a ring 6	4
14.	23P12OC	Round washer 12 galv., 82005	8
15.	23P8OOC	Round washer 8 galv., 82005 82005	8
16.	23NS12OC	Self-locking nut M12 galv., 82175 8 82175 8	4
17.	23NS8OC	Self-locking nut M8 galv., 82175 8 82175 8	4
18.	23S8/60OC 8.8	Bolt 8 x 60 galv., 8.8 82101 82101	4

No.	No.	Part or assembly name	Volume
19.	23P12OOC	Round washer 12 galv., coat. 82030	4

22. LIGHTS – REAR



Z577-10 09.00.00

Tabela 23. Lights – rear

Electrics and lighting assy. - Z577-10 09.00.00

No.	No.	Part or assembly name	Volume
1.	Z577-10 09.10.10	Left light bracket welded	1
2.	Z577-10 09.50.01	Licence plate support	1
3.	Z577-10 09.50.02	Licence plat light bracket	1
4.	Z577-10 09.20.10	Right light bracket welded	1
5.	26TO	Reflective triangle	2
6.	POD-ELK-000308	Rear combination light W95 (744) with 200 cm YLY-S 4 x 0.75 mm cable	2
7.	POD-ELK-000237	Licence plate light WO8-48	1
8.	23N6OC	Nut M6 galv., 82144 5 82144 5	4
9.	23NS6OC	Self-locking nut M6 galv., 82175 8 82175 8	2
10.	23P6OOC	Round washer 6 galv., 82005 82005	4
11.	23S6/16 8.8OC	Bolt 6 x 16 galv., 8.8 82105 82105 8.8	2
12.	23S12/40OC 8.8	Bolt 12 x 40 galv., 8.8 82105 82105	2
13.	23S12/30OC 8.8	Bolt 12 x 30 galv., 8.8 82105 82105	2
14.	23NS12OC	Self-locking nut M12 galv., 82175 8 82175 8	2
15.	23P12OC	Round washer 12 galv., 82005	6
16.	23P6SPOC	Spring washer, 6.1 galv., 82008 82008	4
17.	23P5,1SPOC	Spring washer 5.1 galv., 82008 82008	4
18.	23N5OC	Nut m5oc 82144 5 82144 5	4

23. HITCH PROTECTION (EU APPROVAL)

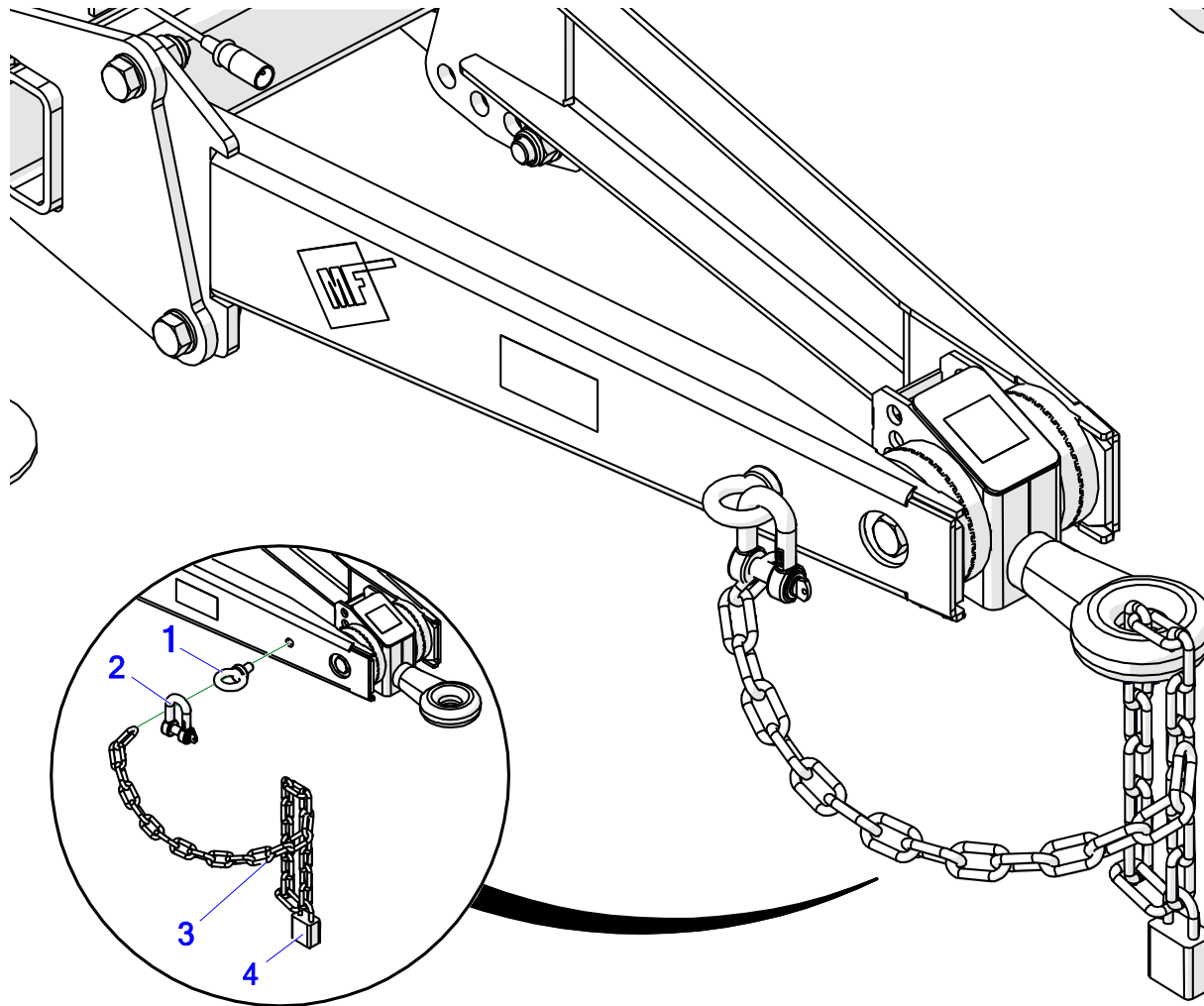


Tabela 24. Hitch protection (EU approval)

No.	No.	Part or assembly name	Volume
1.	POD-ELZ-000818	Eye bolt M16 galv. DIN580	1
2.	POD-ELZ-000477	Shackle, 16 mm	1
3.	23LSFI8OC	General purpose chain 8 mm galv., 8 x 30 x 50 (0.7 m Z560)I	1
4.	POD-OGL-001109	Padlock 50 mm	1

NOTES

A series of horizontal dotted lines for taking notes, spanning the width of the page.



Metal-Fach Sp. z o.o. stale doskonali swoje wyroby i dostosowuje ofertę do potrzeb klientów, w związku z tym zastrzega sobie prawo do wprowadzania zmian w wyrobach bez powiadamiania. Prosimy więc przed podjęciem decyzji o zakupie, o kontakt z autoryzowanym dealerm lub handlowcami Metal-Fach Sp. z o.o. Metal-Fach Sp. z o.o. wyklucza roszczenia związane z danymi i zdjęciami zawartymi w tym katalogu, przedstawiona oferta nie stanowi oferty w myśl przepisów Kodeksu Cywilnego.

Zdjęcia nie zawsze przedstawiają wyposażenie standardowe.

Oryginalne części zamienne są dostępne u autoryzowanych dealerów na terenie kraju i zagranicy oraz w sklepie firmowym Metal-Fach.

SERWIS

16-100 Sokółka, ul. Kresowa 62
tel.: +48 85 711 07 80; fax: +48 85 711 07 93
serwis@metalfach.com.pl

SPRZEDAŻ

16-100 Sokółka, ul. Kresowa 62
tel.: +48 85 711 07 78; fax: +48 85 711 07 89
handel@metalfach.com.pl

HURTOWNIA CZĘŚCI ZAMIENNYCH

16-100 Sokółka, ul. Kresowa 62

Sprzedaż Hurtowa:

tel.: +48 85 711 07 80; fax: +48 85 711 07 93
serwis@metalfach.com.p

Sprzedaż Indywidualna:

tel.: +48 85 711 07 80; fax: +48 85 711 07 93
serwis@metalfach.com.p

