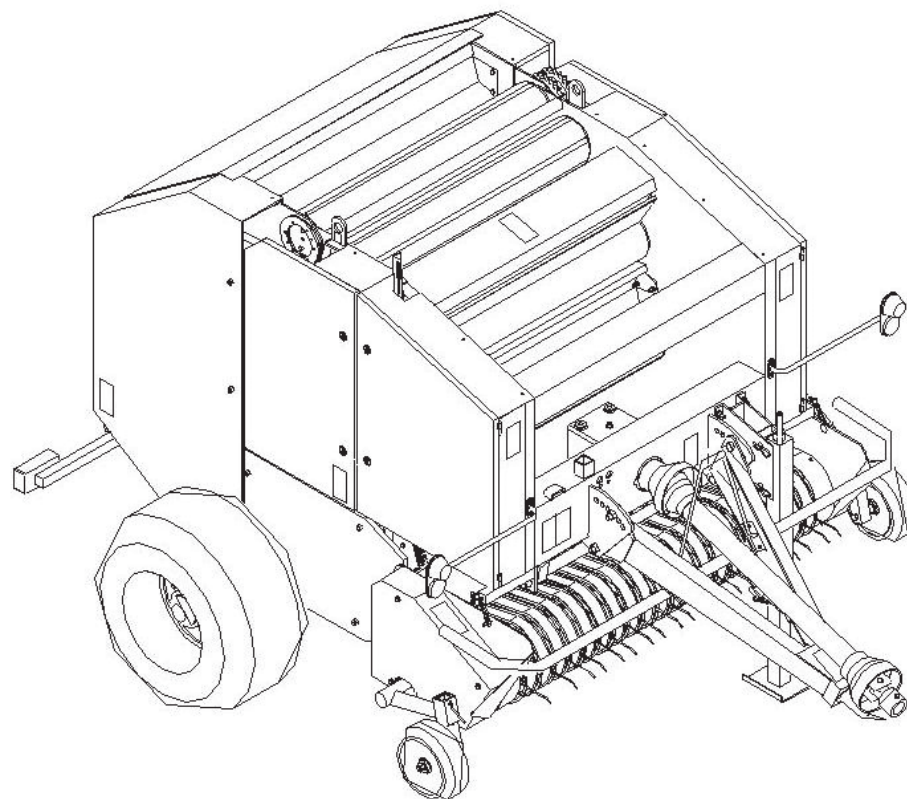


Spare parts catalogue  
Z-562 baling press with rotary feeder



Sokółka 20.....

## *LIST OF CATALOGUE ITEMS*

1.	Wheel axle, complete .....	4
2.	Tow bar, complete .....	6
3.	Press body, complete .....	8
4.	Bale release mechanism .....	10
5.	Bale ejector .....	14
6.	Power system .....	16
7.	Chain stretcher assembly .....	18
8.	Rolling shaft, complete, II .....	22
9.	Rolling shaft, complete III .....	24
10.	Rolling shaft, complete, IV .....	26
11.	Rolling shaft, complete V .....	28
12.	Rolling shaft, complete, VI .....	30
13.	Rolling shaft, complete, VII .....	32
14.	Cord feeder assembly .....	34
15.	Cord wrapping mechanism body .....	36
16.	Cord wrapping mechanism .....	40
17.	Worm gear .....	44
18.	Cord wrapping mechanism guards .....	46
19.	Hydraulic system .....	48
20.	Electrical system .....	52
21.	Net wrapping mechanism .....	54
22.	Central lubrication system .....	66
23.	Right side guards .....	70
24.	Left side guards .....	72
25.	Rear guards .....	74
26.	Rotary feeder assembly .....	76
27.	Cutter assembly .....	80
28.	Pickup, complete .....	82

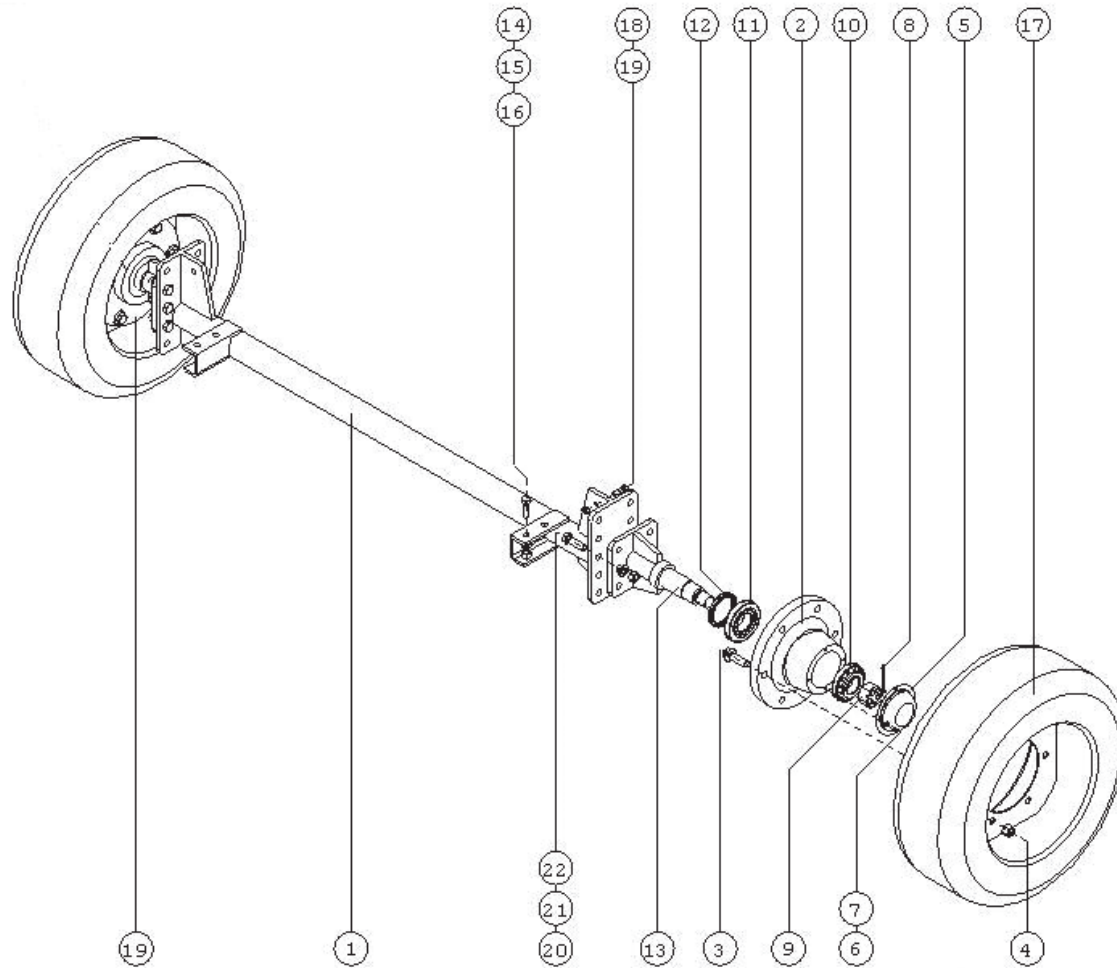


## USING THE PARTS CATALOGUE

The Parts Catalogue includes drawing tables and descriptions of the baling press subassemblies with their assembly parts listing.

Use the Catalogue as follows:

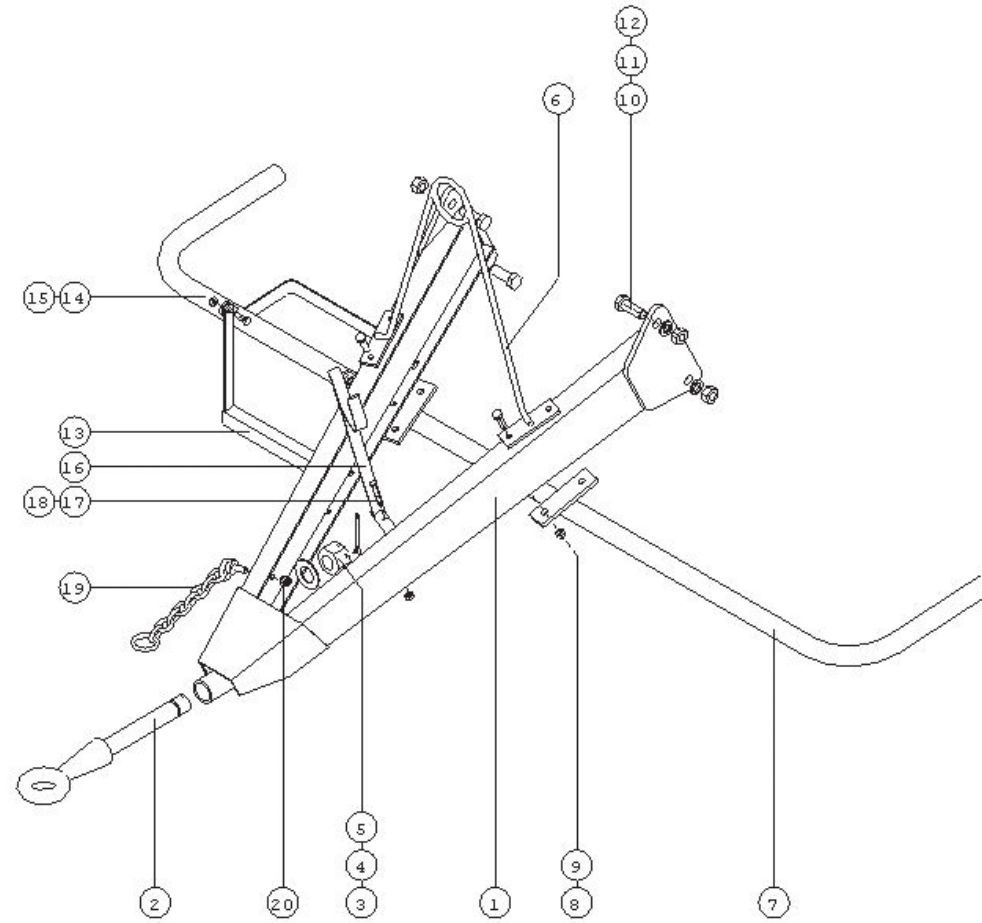
- 1) Determine which assembly of the machine houses the part to be replaced.
- 2) Find the applicable Catalogue table and then find the part in the table.
- 3) Using the part number in the drawing as the reference, find the appropriate drawing/standard number and part name in the table description.



Wheel axle, complete

**WHEEL AXLE, COMPLETE**

No. in dwg	Part name	Drawing or standard no.	Number of pieces		
			Z562	Z 562/1	Z562/2
1	Primary axle	Z-562 000.008.000	1		
2	Hub		1		
3	Pin, M18x1.5x55 – 8.8 – B		12		
4	Ball nut, M18 8 – B		12		
5	Hub cover		2		
6	Bolt, M6x16 5.8 – B	PN/M – 82105	8		
7	Plain washer $\varnothing$ 6.5	PN/M – 82030	8		
8	Cotter pin, 6.3x71	PN/M – 82001	2		
9	Nut, M36 8 – B	PN/M – 82148	2		
10	Cone bearing, 32210 RS	PN – ISO 355:1997	2		
11	Cone bearing, 32211 RS	PN – ISO 355:1997	2		
12	Pierścień uszczelniający	A75x100x10	2		
13	Axle shaft	Z-562 099.000.000	2		
14	Bolt, M6x40 8.8 – B	PN/M – 82105	4		
15	Nut, M16 8 – B	PN/M – 82144	4		
16	Spring washer, 16.3	PN/M – 82008	4		
17	Wheel, complete	400\60 – 15.5 –14PR	2		
18	Bolt, M12x40 5.8 – B	PN/M – 82105	2		
19	Nut, M12 5 – B	PN/M – 82175	2		
20	Bolt, M20x60 8.8 – B	PN/M – 82105	12		
21	Spring washer, 20.5	PN/M – 82008	12		
22	Nut, M20 8 – B	PN/M – 82144	12		

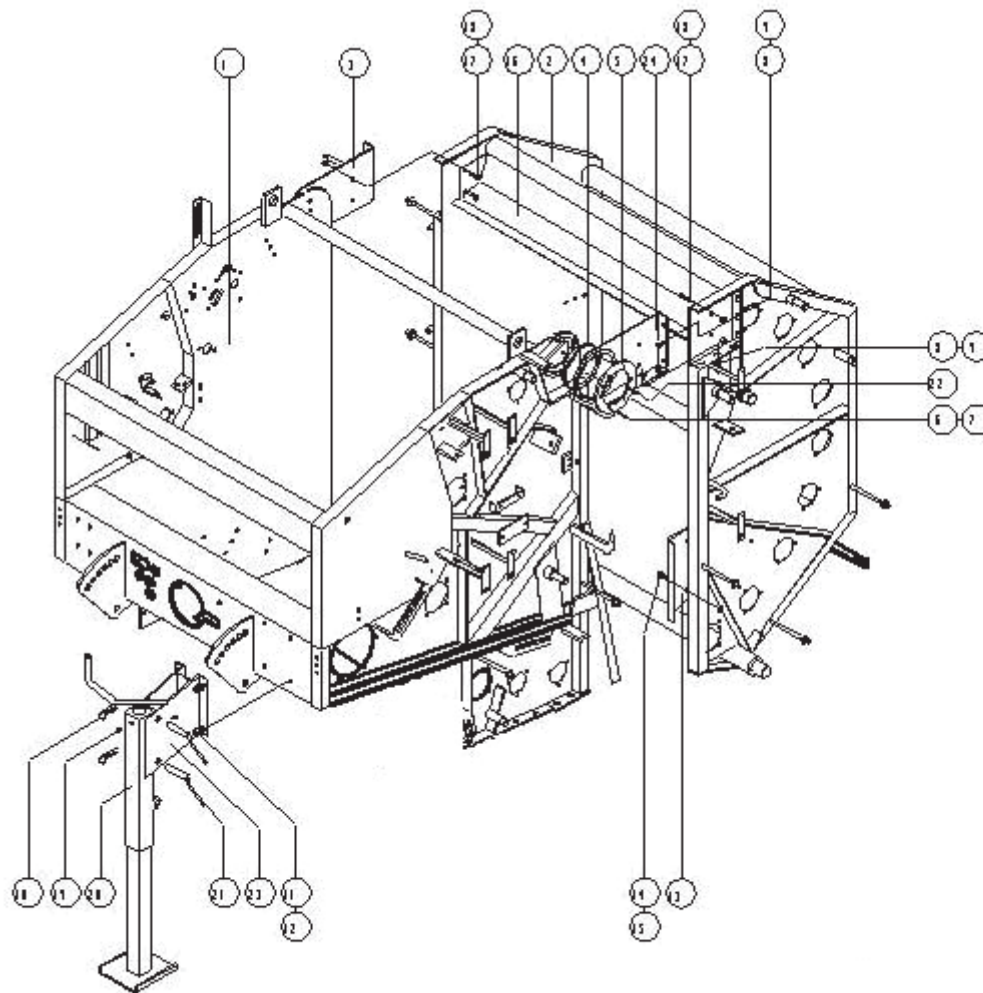


Drawbar, complete

***TOW BAR, COMPLETE***

No. in dwg	Part name	Drawing or standard no.	Number of pieces		
			Z562	Z 562/1	Z562/2
1	Welded tow bar	Z-562 002.000.000R	1		
2	Tow bar eye	Z-562 002.000.005A	1		
3	Plain washer Ø37	PN/M – 82005	1		
4	Nut, A M36 5 – B	PN/M – 82159	1		
5	Cotter pin, 6.3x71	PN/M – 82001	1		
6	Cable bracket	Z-562 000.217.000	1		
7	Step pipe	Z-562 000.003.000R	1		
8	Bolt, M8x35 5.8 – B	PN/M – 82105	4		
9	Nut, M8 5 – B	PN/M – 82175	4		
10	Bolt, M20x50 8.8 – B	PN/M – 82105	4		
11	Nut, M20 5 – B	PN/M – 82144	4		
12	Spring washer, 20.5	PN/M – 82008	4		
13	Step II	Z-562 000.003.500	1		
14	Bolt, M10x25 8.8 – B	PN/M – 82105	2		
15	Nut, M10 8 – B	PN/M – 82175	2		
16	PTO support	Z-562 002.010.000	1		
17	Bolt, M8x45 8 – B	PN/M – 82101	1		
18	Nut, M8 8 – B	PN/M – 82175	1		
19	Chain, complete	Z-562 002.600.000	1		
20	Nut, M12 8 – B	PN/M – 82175	1		

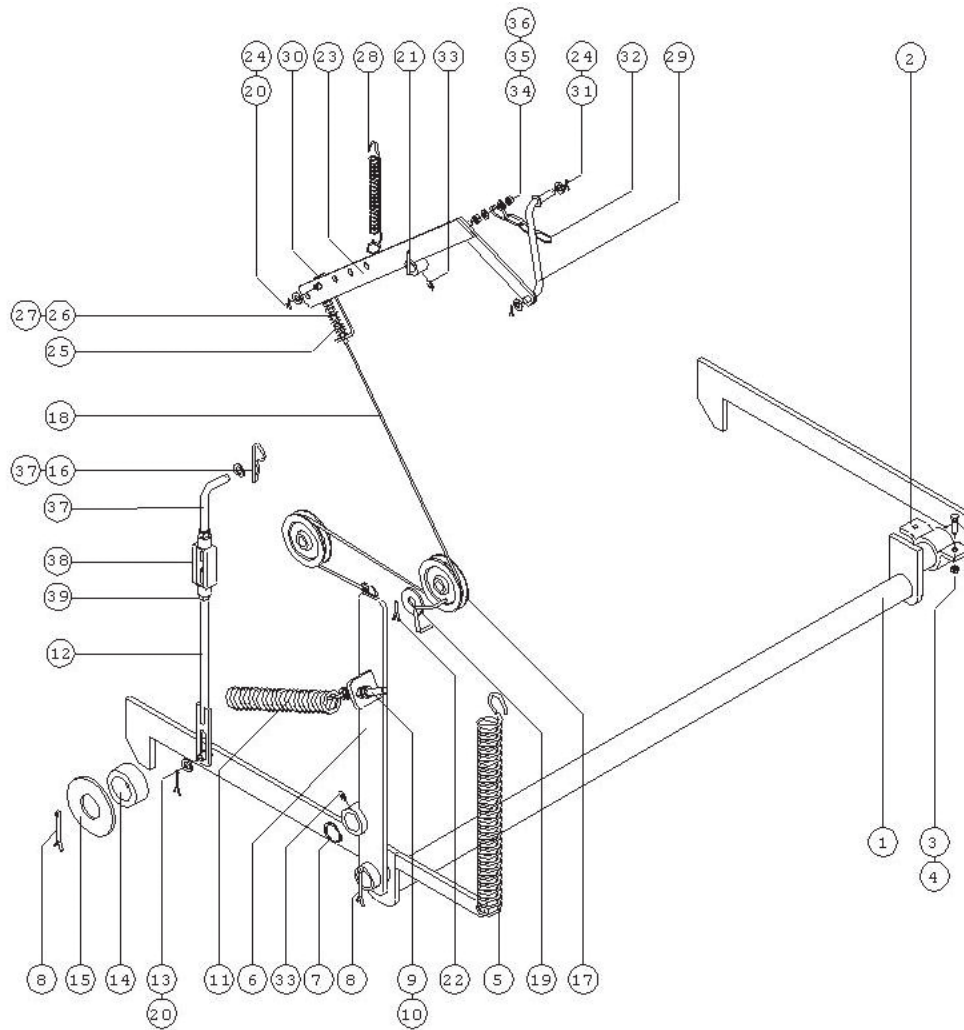




Press body, complete

***PRESS BODY, COMPLETE***

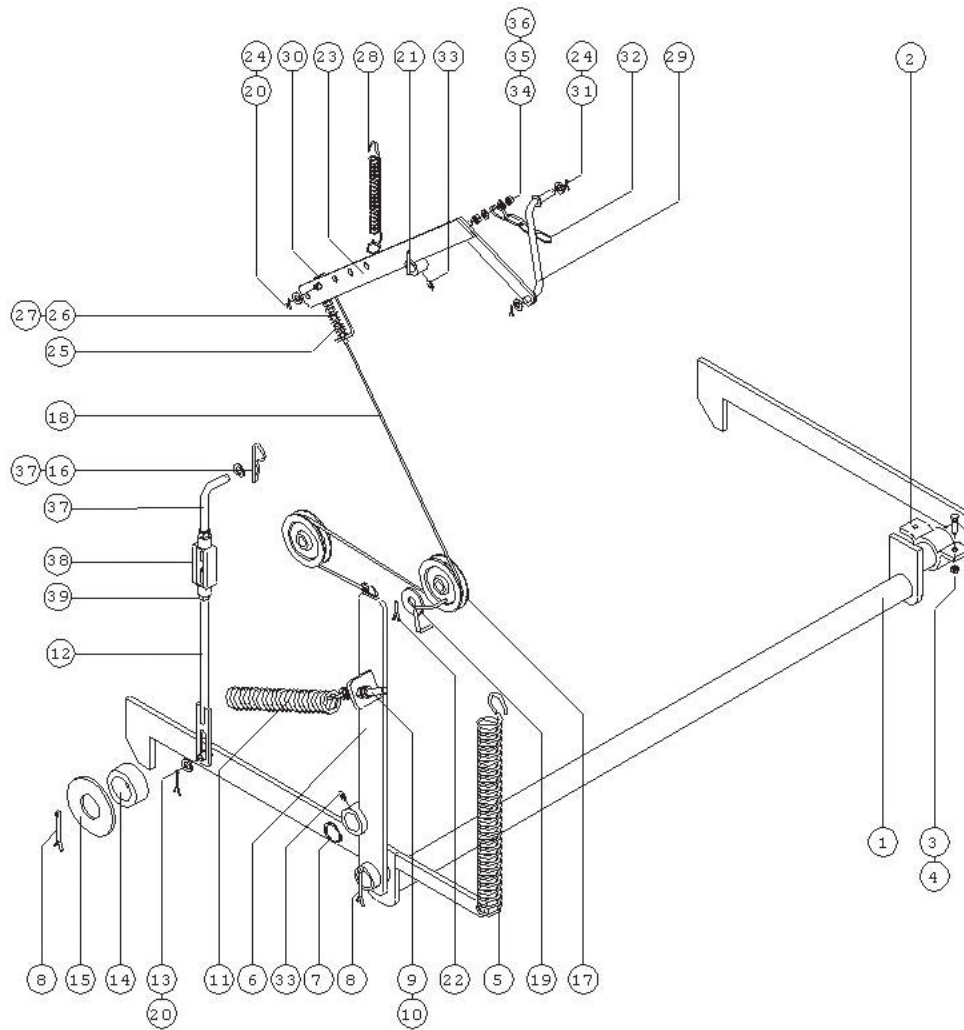
No. in dwg	Part name	Drawing or standard no.	Number of pieces		
			Z562	Z 562/1	Z562/2
1	Front body	Z-562 063.100.000	1		
2	Rear body	Z-562 001.002.000	1		
3	Right fastener	Z-562 000.005.000P	1		
4	Slide bushing	Z-562 000.000.006	2		
5	Cover	Z-562 000.000.007	2		
6	Bolt, M6x16 8.8 – B	PN/M – 82105	12		
7	Plain washer Ø6.5	PN/M – 82030	12		
8	Bolt, M12x30 8.8 – B	PN/M – 82105	12		
9	Nut, M12 5 – B	PN/M – 82175	12		
10	Pin – cotter pin Ø5	DIN 11024	2		
11	Bolt, M12x30 8.8 – B	PN/M – 82105	4		
12	Nut, M12 5 – B	PN/M – 82175	4		
13	Inner sheet panel, L+R	Z-562 000.000.202	1+1		
14	Bolt, M10x30 5.8 – B	PN/M – 82406	6		
15	Nut, M10 5 – B	PN/M – 82175	6		
16	Inner guard I	Z-562 000.000.027	1		
17	Bolt, M10x30 8.8 – B	PN/M – 82105	4		
18	Nut, M10 5 – B	PN/M – 82175	4		
19	Grease nipple, M10x1	PN/M – 86003	1		
20	Support foot	Z-562 067.000.000	1		
21	Pin – pin	Z-562 000.212.000	2		
22	Grease nipple, M6x1	PN/M – 86003	4		
23	Foot support	Z-562 000.211.000R	1		
24	Left fastener	Z-562 000.005.000L	1		



Bale release mechanism

### ***BALE RELEASE MECHANISM***

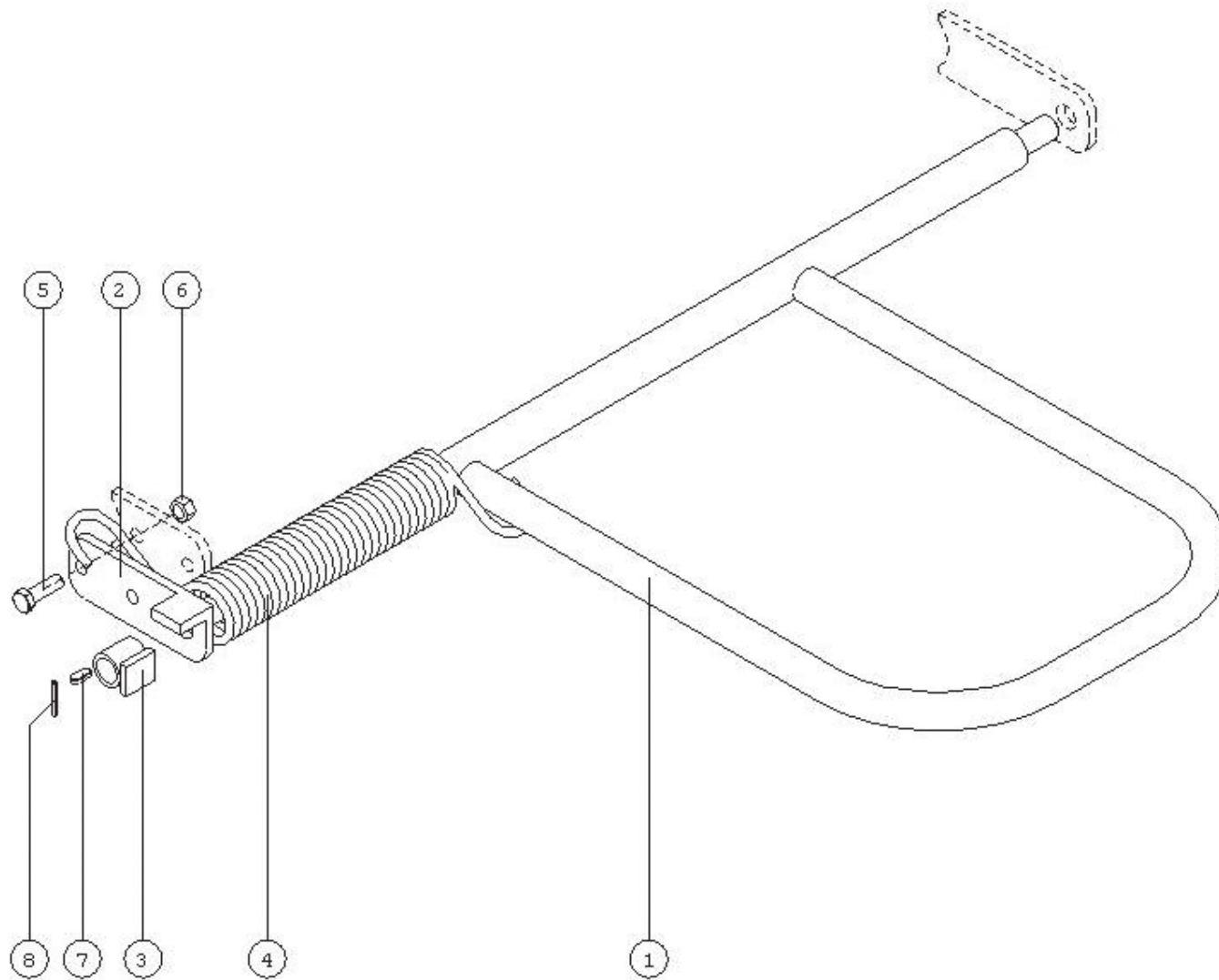
No. in dwg	Part name	Drawing or standard no.	Number of pieces		
			Z562	Z 562/1	Z562/2
1	Lever system	Z-562 000.009.000	1		
2	Pin, Ø4	DIN 11024	1		
3	Bolt, M12x40 5.8 – B	PN/M – 82105	2		
4	Nut, M12 5 – B	PN/M – 82175	2		
5	Spring III	Z-562 000.000.056	1		
6	Lever I	Z-562 000.010.000	1		
7	Spring ring, Z35	PN/M – 85111	1		
8	Cotter pin, 6.3x71	PN/M – 82001	3		
9	Bolt, M12x100 5.8	PN/M – 82105	1		
10	Nut, M12 5 – B	PN/M – 82144	3		
11	Spring VII	Z-562 000.000.060	1		
12	Fastener II	Z-562 015.002.000	1		
13	Plain washer Ø10.5	PN/M – 82005	1		
14	Bush	Z-562 001.000.008	2		
15	Washer	Z-562 001.000.009	2		
16	Plain washer Ø17	PN/M – 82005	1		
17	Pull wheel	Z-562 000.000.024	2		
18	Cable, complete	Z-562 000.000.025	1		
19	Safety washer	Z-562 000.000.026	2		
20	Cotter pin, 3x36	PN/M – 82001	2		
21	Spring pin, 6x45	PN/M – 85023	1		
22	Cotter pin, 5x50	PN/M – 82001	2		
23	Lever II	Z-562 011.000.000	1		
24	Plain washer Ø10.5	PN/M – 82030	3		



Bale release mechanism

***BALE RELEASE MECHANISM***

No. in dwg	Part name	Drawing or standard no.	Number of pieces		
			Z562	Z 562/1	Z562/2
25	Spring VI	Z-562 000.000.059	1		
26	Nut, M10 5 – B	PN/M – 82144	2		
27	Plain washer Ø10.5	PN/M – 82005	2		
28	Spring I	Z-562 000.000.054	1		
29	Lever III	Z-562 011.005.000	1		
30	Flat bar	Z-562 011.004.001	1		
31	Cotter pin, 3x28	PN/M – 82001	2		
32	Farming chain, Ø4x16x40	4 links	1		
33	Grease nipple, M6x1	PN/M – 86003	2		
34	Plain washer Ø8.5	PN/M – 82030	2		
35	Nut, M8 5 – B	PN/M – 82144	1		
36	Nut, M8 5 – B	PN/M – 82175	1		
37	Fastener I	Z-562 015.000.001	1		
38	String nut, M16	23NC	1		
39	Nut, M16 5 – B	PN/M – 82144	1		

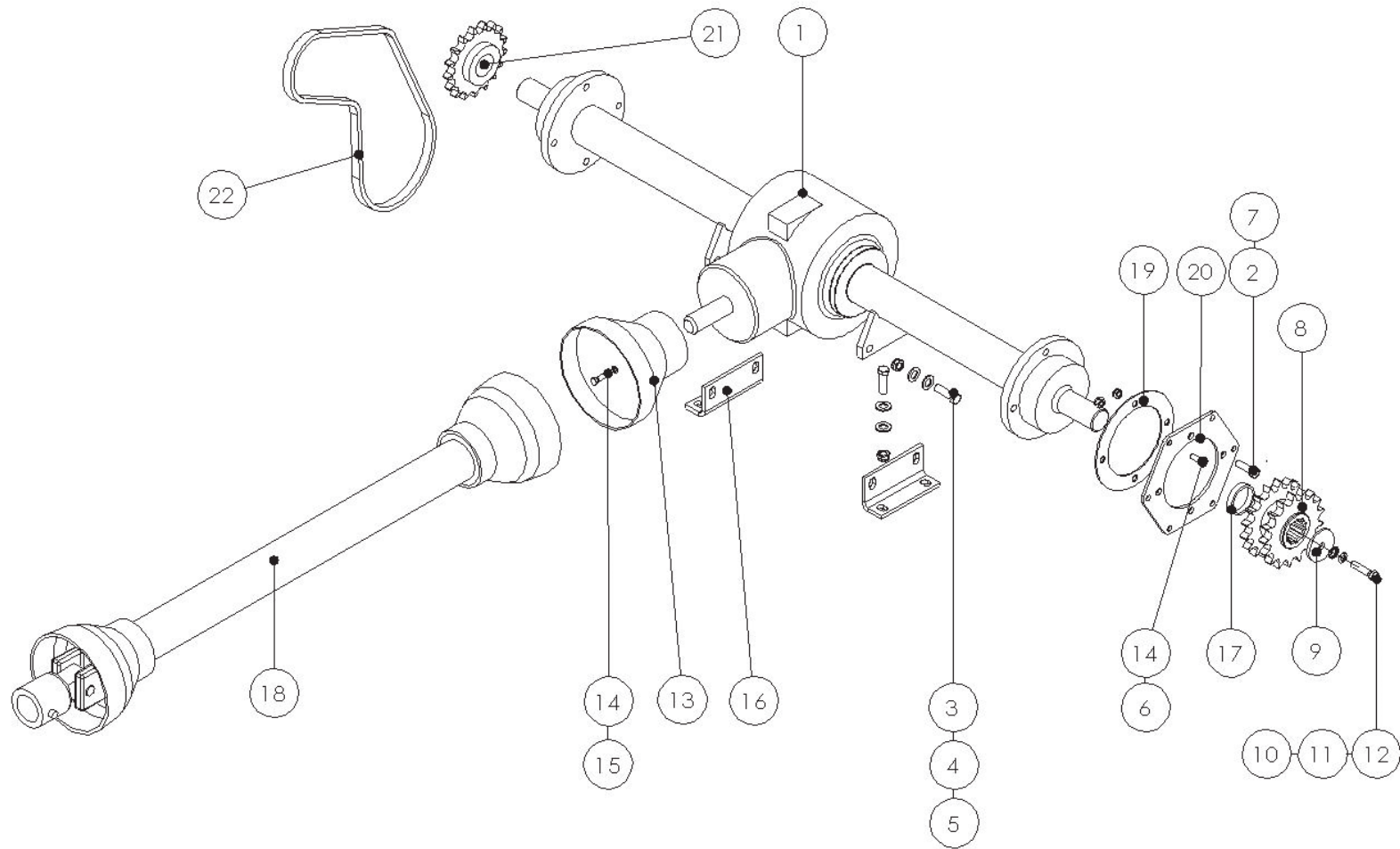


Bale ejector

***BALE EJECTOR***

No. in dwg	Part name	Drawing or standard no.	Number of pieces		
			Z562	Z 562/1	Z562/2
1	Ejector frame	Z-562 000.079.000	1		
2	Bracket	Z-562 000.008.009	1		
3	Lock	Z-562 000.204.000	1		
4	Spring	Z-562 000.000.206	1		
5	Bolt, M16x50 8.8 – B	PN/M – 82105	2		
6	Nut, M16 5 – B	PN/M – 82175	2		
7	Key, A8x7x36	PN/M – 85005	1		
8	Spring pin, 6x45	PN/M – 85023	1		

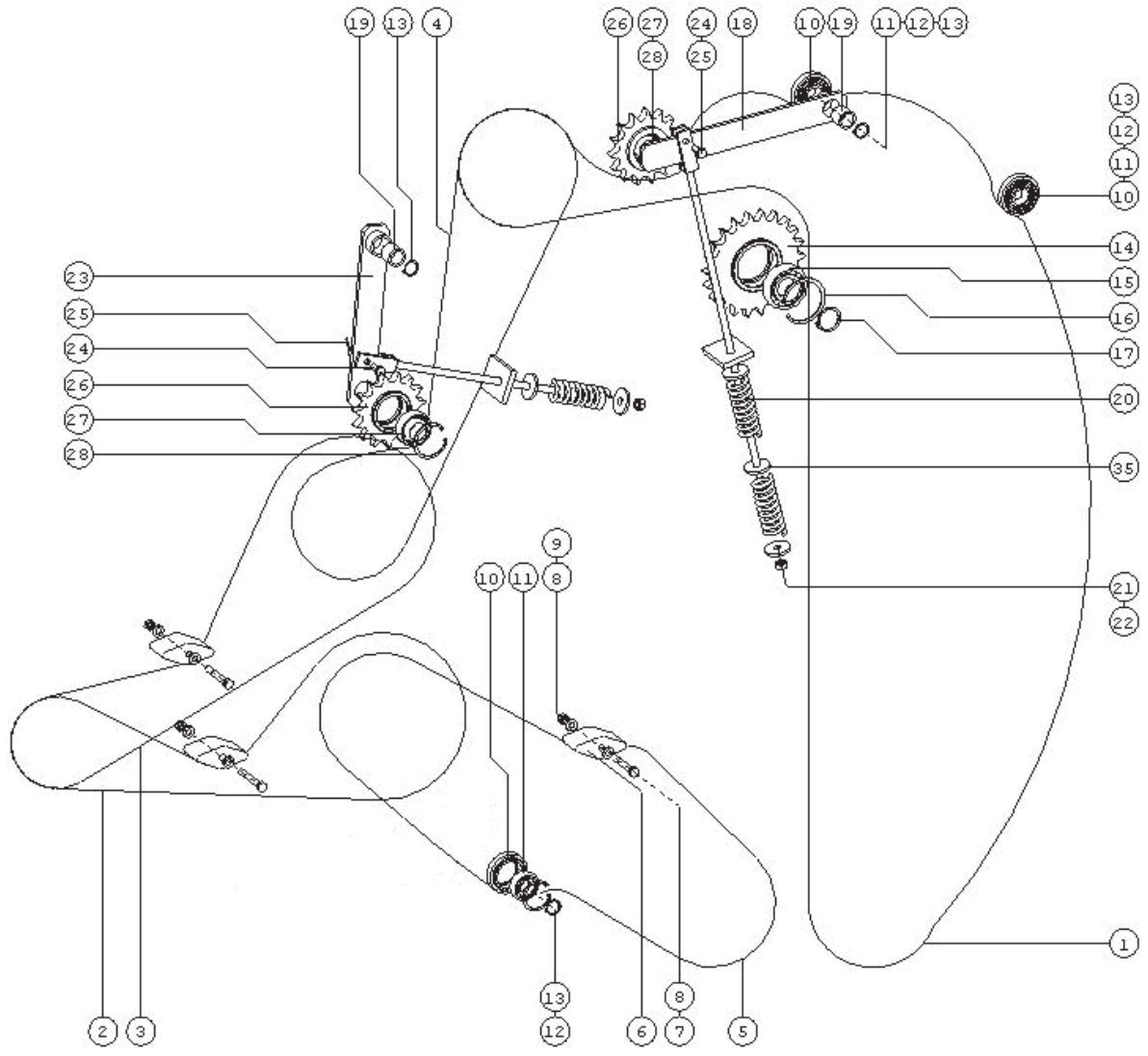




Power system

***POWER SYSTEM***

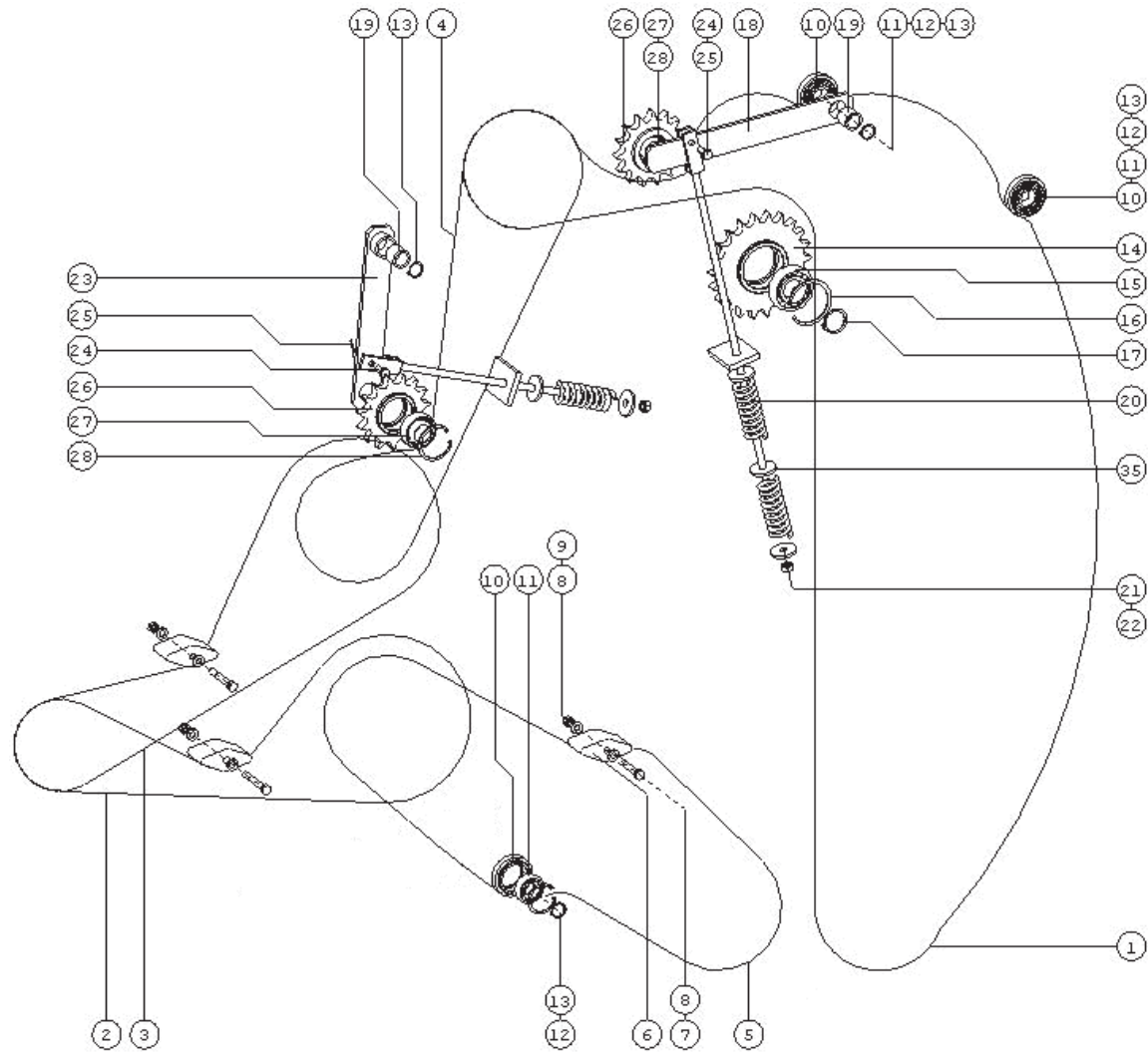
No. in dwg	Part name	Drawing or standard no.	Number of pieces		
			Z562	Z 562/1	Z562/2
1	Final intersecting axis gear	141-01.A1A.L	1		
2	Bolt, M12x40 8.8 – B	PN/M – 82105	4		
3	Nut, M14 5 – B	PN/M – 82175	8		
4	Plain washer Ø15	PN/M – 82005	16		
5	Bolt, M14x40 8.8 – B	PN/M – 82105	8		
6	Nut, M10 5 – B	PN/M – 82175	4		
7	Nut, M12 5 – B	PN/M – 82175	4		
8	Wheel, Z – 17	Z-562 000.064.000	1		
9	Washer II	Z-562 000.000.069	1		
10	Bolt, M12x50 8.8 – B	PN/M – 82105	1		
11	Plain washer Ø13	PN/M – 82005	1		
12	Spring washer, 12.2	PN/M – 82008	1		
13	Shaft mounting guard		1		
14	Bolt, M10x25 5.8 – B	PN/M – 82105	10		
15	Plain washer Ø10.5	PN/M – 82030	4		
16	Bracket	Z-562 063.400.010	2		
17	Special washer	Z-562 000.000.065	1		
(17)	Bushing I (l=75)	Z-562 070.000.001	1		
18	Drive shaft	6R – 602 – 7 – B1	1		
19	Cover plate I	Z-562 063.400.020	1		
20	Cover plate II	Z-562 063.400.030	1		
21	Wheel, Z-15	Z-562 063.420.000	1		
22	Chain, 1", 53 links	PN/M – 84168	1		



Chain stretcher assembly

***CHAIN STRETCHER ASSEMBLY***

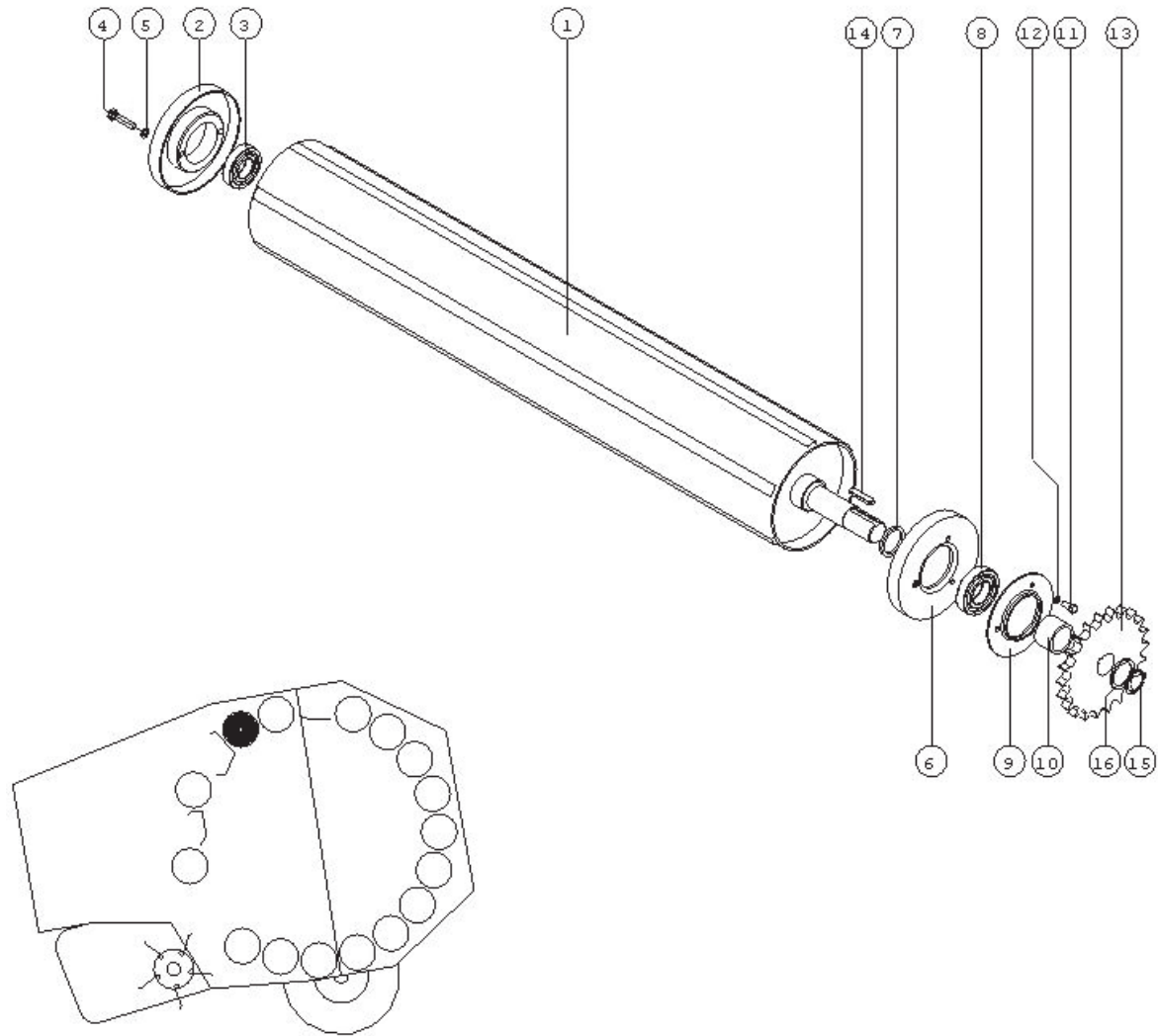
No. in dwg	Part name	Drawing or standard no.	Number of pieces		
			Z562	Z 562/1	Z562/2
1	Chain, 1", 169 links	PN/M – 84168	1		
2	Chain, 1", 61WZ links	PN/M – 84168	1		
3	Chain, 1", 79 links	PN/M – 84168	1		
4	Chain, 1", 69 links	PN/M – 84168	1		
5	Chain, 1", 92 links	PN/M – 84168	1		
6	Chain slide I	Z-562 000.000.036	3		
7	Bolt, M12x100 5.8 – B	PN/M – 82101	3		
8	Plain washer Ø13	PN/M – 82005	9		
9	Nut, M12 5 – B	PN/M – 82175	4		
10	Stretcher roller	Z-562 000.000.039	3		
11	Bearing, 6205 RS	PN/M – 86100	3		
12	Spring ring, W – 52	PN/M – 85111	3		
13	Spring ring, Z – 25	PN/M – 85111	4		
14	Wheel, Z – 22	Z-562 000.074.000	1		
15	Bearing, 6208S	PN/M – 86100	1		
16	Spring ring, W – 80	PN/M – 85111	1		
17	Spring ring, Z – 40	PN/M – 85111	1		
18	Stretcher lever I	Z-562 037.000.000	1		
19	Slide bushing	Z-562 037.000.002	2		
20	Spring V	Z-562 000.000.058	3		
21	Washer I	Z-562 000.000.137	4		
22	Nut, M12 5 – B	PN/M – 82175	2		
23	Stretcher lever II	Z-562 038.000.000	1		
24	Rivet, 10x30	PN/M – 82952	2		



Chain stretcher assembly

***CHAIN STRETCHER ASSEMBLY***

No. in dwg	Part name	Drawing or standard no.	Number of pieces		
			Z562	Z 562/1	Z562/2
25	Cotter pin, 3x36	PN/M – 82001	2		
26	Wheel, Z – 15	Z-562 000.040.000	2		
27	Bearing, RAE 30NPP FA106		2		
28	Spring ring, W – 62	PN/M – 85111	2		
29					

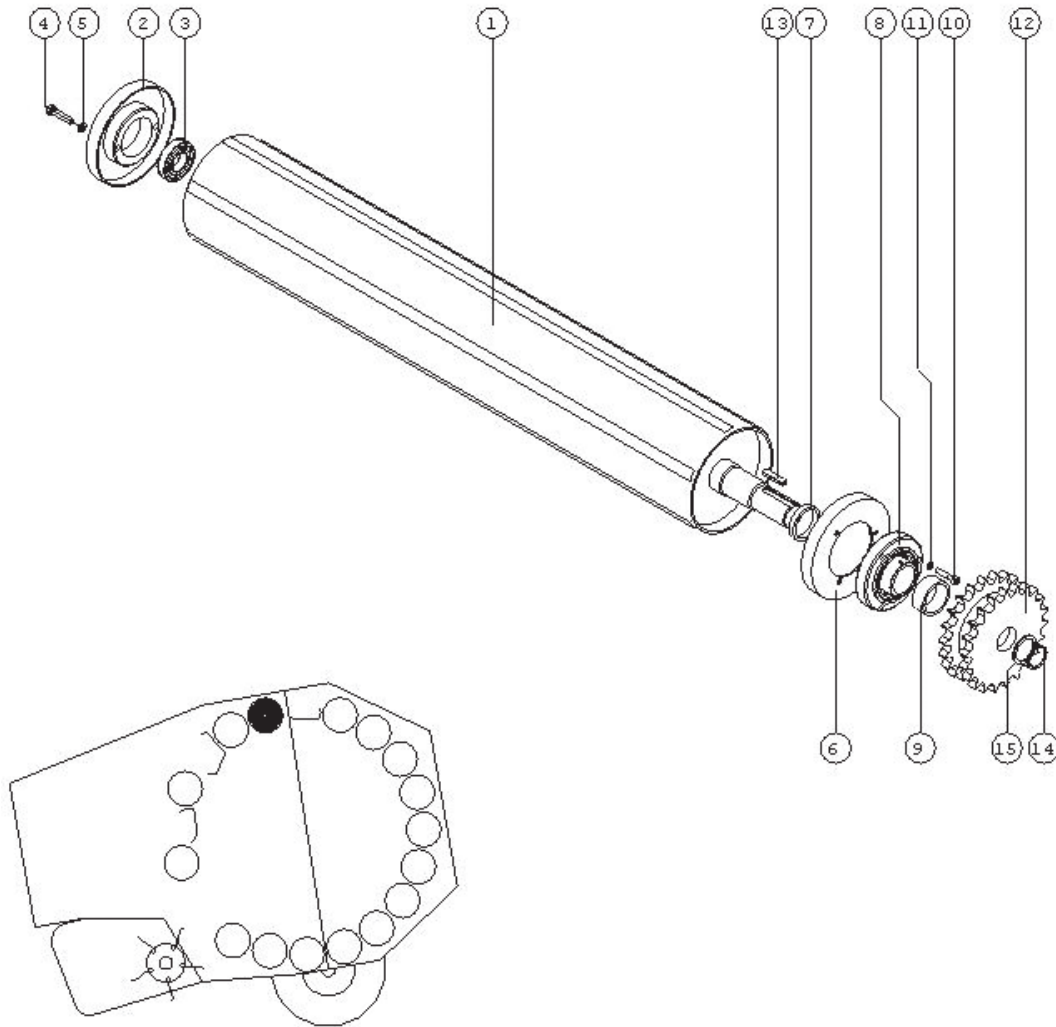


Rolling shaft complete II

**ROLLING SHAFT, COMPLETE, II**

No. in dwg	Part name	Drawing or standard no.	Number of pieces		
			Z562	Z 562/1	Z562/2
1	Rolling shaft I	Z-562 000.071.000/I	1		
2	Cover I	Z-562 000.077.000	1		
3	Bearing, K6207 RS	PN/M – 86120	1		
4	Bolt, M10x30 8.8 – B	PN/M – 82105	2		
5	Spring washer, Ø10.2	PN/M – 82008	2		
6	Cover II	Z-562 000.075.000	1		
7	Special washer	Z-562 000.000.090	1		
8	Bearing, K6208 RS	PN/M – 86120	1		
9	Bearing housing, P208	Z-562 000.000.080	1		
10	Bushing	Z-562 000.000.087	1		
11	Bolt, M8x30 8.8 – B	PN/M – 82105	3		
12	Spring washer, Ø8.2	PN/M – 82008	3		
13	Wheel, Z – 22	Z-562 000.081.000/I	1		
14	Key, A10x8x50	PN/M – 85005	1		
15	Spring ring, Z – 38	PN/M – 85111	1		
16	Plain washer Ø39	PN/M – 82005	1		

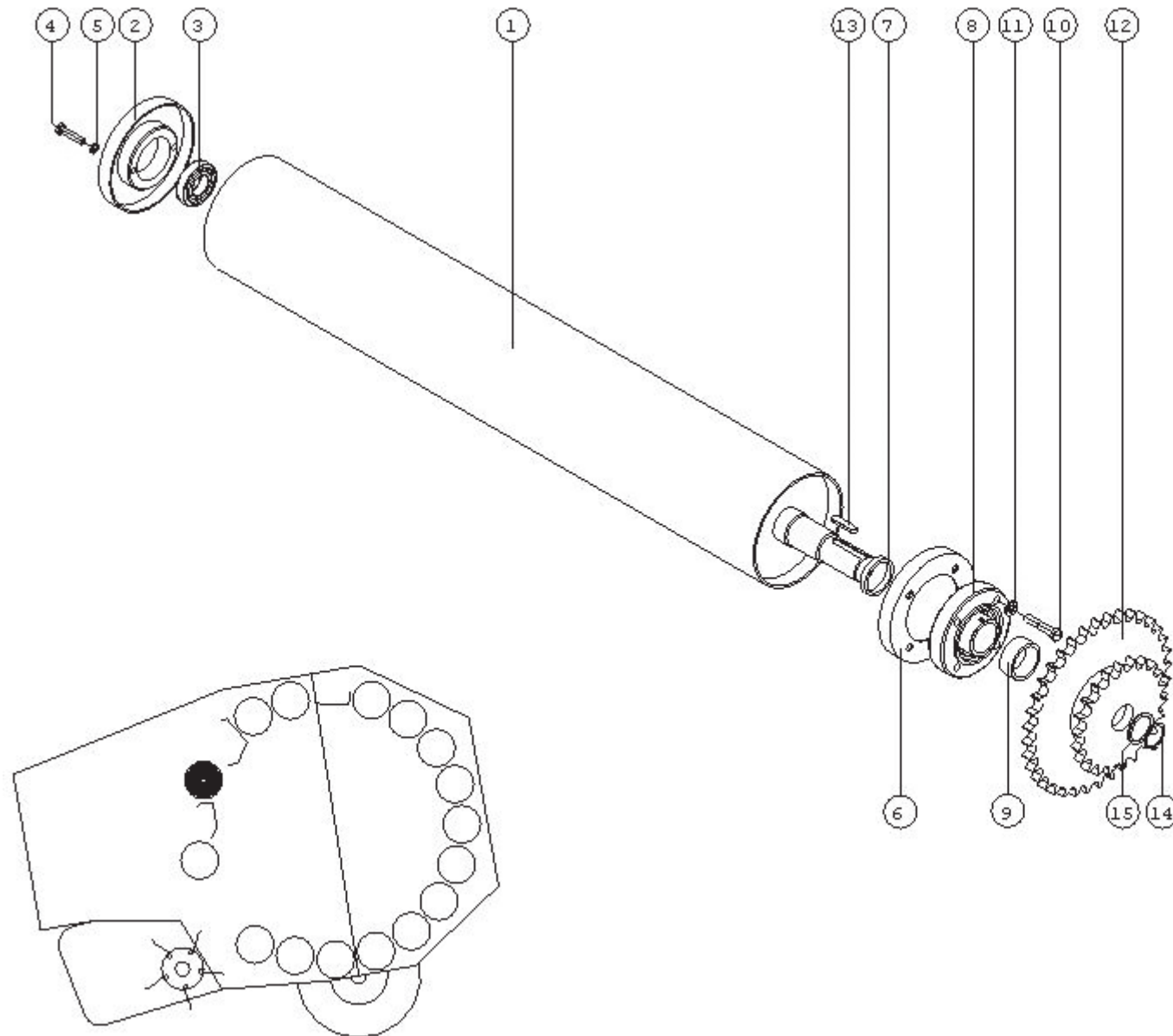




Rolling shaft complete III

**ROLLING SHAFT, COMPLETE, III**

No. in dwg	Part name	Drawing or standard no.	Number of pieces		
			Z562	Z 562/1	Z562/2
1	Rolling shaft II	Z-562 000.072.000/I	1		
2	Cover I	Z-562 000.077.000	1		
3	Bearing, K6207 RS	PN/M – 86120	1		
4	Bolt, M10x30 8.8 – B	PN/M – 82105	2		
5	Spring washer, Ø10.2	PN/M – 82008	2		
6	Cover II	Z-562 000.075.000	1		
7	Special washer	Z-562 000.000.090	1		
8	Bearing, UCFC210	PN ISO 3228:1996	1		
9	Bushing	Z-562 000.000.087	1		
10	Bolt, M8x40 8.8 – B	PN/M – 82302	3		
11	Spring washer, Ø8.2	PN/M – 82008	3		
12	Wheel, Z – 22 / Z – 22	Z-562 000.085.000/I	1		
13	Key, A10x8x50	PN/M – 85005	1		
14	Spring ring, Z – 45	PN/M – 85111	1		
15	Plain washer Ø46	PN/M – 82005	1		



Rolling shaft complete IV

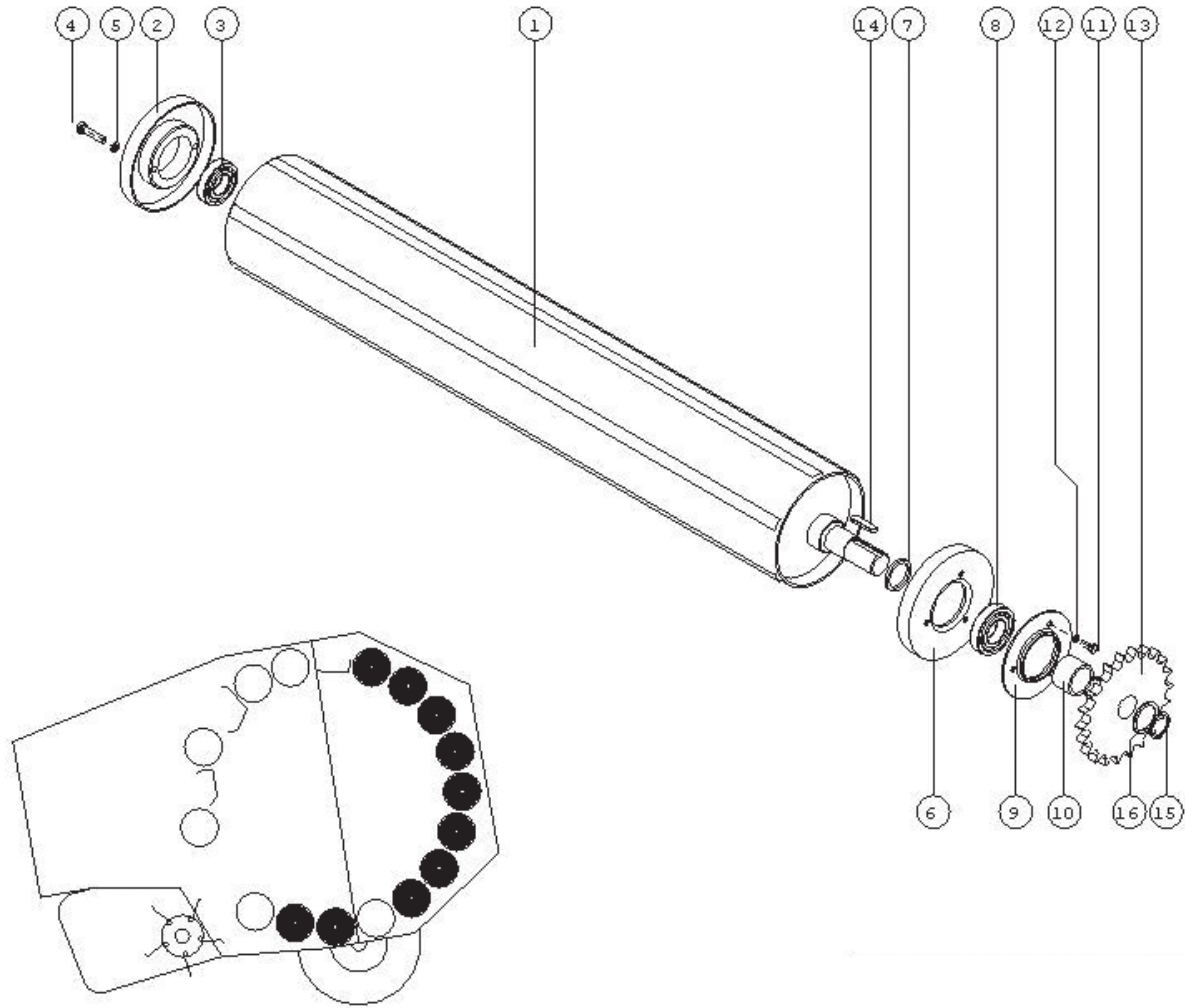
***ROLLING SHAFT, COMPLETE IV***

No. in dwg	Part name	Drawing or standard no.	Number of pieces		
			Z562	Z 562/1	Z562/2
1	Rolling shaft II	Z-562 000.072.000/I	1		
2	Cover I	Z-562 000.077.000	1		
3	Bearing, K6207 RS	PN/M – 86120	1		
4	Bolt, M10x30 8.8 – B	PN/M – 82105	2		
5	Spring washer, Ø10.2	PN/M – 82008	2		
6	Cover II	Z-562 000.075.000	1		
7	Special washer	Z-562 000.000.090	1		
8	Bearing, UCFC210	PN ISO 3228:1996	1		
9	Bushing	Z-562 000.000.089	1		
10	Bolt, M12x60 8.8 – B	PN/M – 82101	4		
11	Spring washer, Ø12.2	PN/M – 82008	4		
12	Wheel, Z – 36 / Z – 22	Z-562 000.083.000/I	1		
13	Key, A10x8x50	PN/M – 85005	1		
14	Spring ring, Z – 45	PN/M – 85111	1		
15	Plain washer Ø46	PN/M – 82005	1		



***ROLLING SHAFT, COMPLETE V***

No. in dwg	Part name	Drawing or standard no.	Number of pieces		
			Z562	Z 562/1	Z562/2
1	Rolling shaft II	Z-562 000.072.000/I	1		
2	Cover I	Z-562 000.077.000	1		
3	Bearing, K6207 RS	PN/M – 86120	1		
4	Bolt, M10x30 8.8 – B	PN/M – 82105	2		
5	Spring washer, Ø10.2	PN/M – 82008	2		
6	Cover II	Z-562 000.078.000	1		
7	Special washer	Z-562 000.000.091	1		
8	Bearing, UCFC210	PN ISO 3228:1996	1		
9	Bolt, M12x60 8.8 – B	PN/M – 82101	4		
10	Spring washer, Ø12.2	PN/M – 82008	4		
11	Bushing	Z-562 000.000.089	1		
12	Wheel, Z – 22 / Z – 36	Z-562 000.084.000/I	1		
13	Key, A10x8x50	PN/M – 85005	1		
14	Spring ring, Z – 45	PN/M – 85111	1		
15	Plain washer Ø46	PN/M – 82005	1		

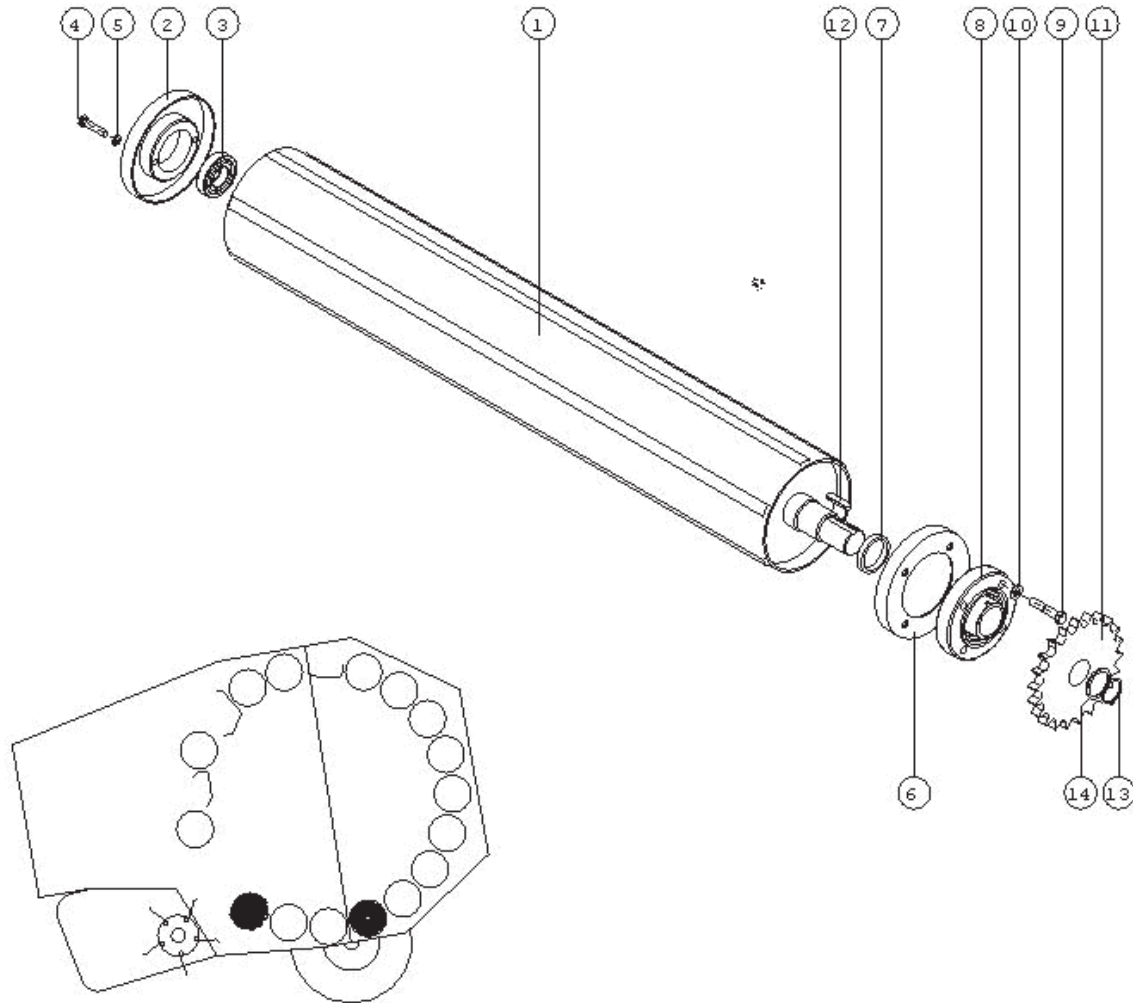


Rolling shaft complete VI

**ROLLING SHAFT, COMPLETE, VI**

No. in dwg	Part name	Drawing or standard no.	Number of pieces		
			Z562	Z 562/1	Z562/2
1	Rolling shaft III	Z-562 000.073.000/I	10		
2	Cover I	Z-562 000.077.000	10		
3	Bearing, K6207 RS	PN/M – 86120	10		
4	Bolt, M10x30 8.8 – B	PN/M – 82105	20		
5	Spring washer, Ø10.2	PN/M – 82008	20		
6	Cover II	Z-562 000.075.000	10		
7	Special washer	Z-562 000.000.090	10		
8	Bearing, K6208 RS	PN/M – 86120	10		
9	Bearing housing, P208	Z-562 000.000.080	10		
10	Bushing	Z-562 000.000.088	10		
11	Bolt, M8x30 8.8 – B	PN/M – 82105	30		
12	Spring washer, Ø8.2	PN/M – 82008	30		
13	Wheel, Z – 22	Z-562 000.081.000/I	10		
14	Key, A10x8x50	PN/M – 85005	10		
15	Spring ring, Z – 38	PN/M – 85111	10		
16	Plain washer Ø39	PN/M – 82005	10		

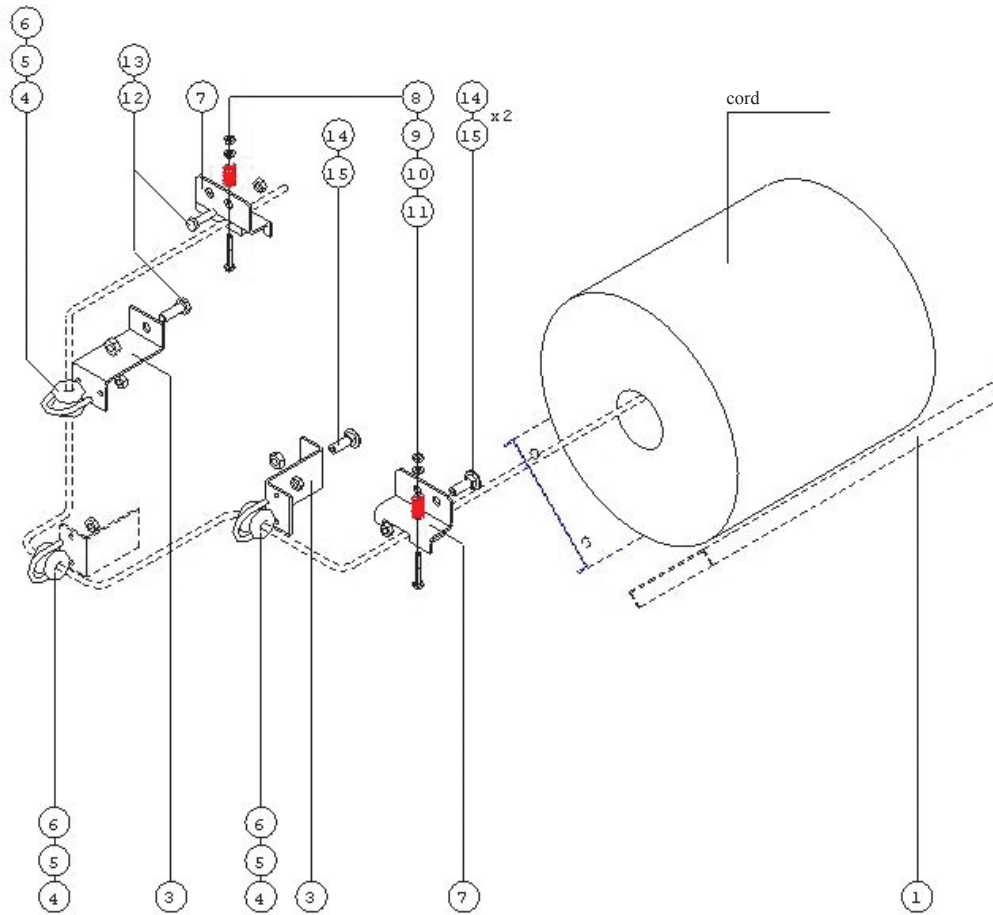




Rolling shaft complete VII

**ROLLING SHAFT, COMPLETE, VII**

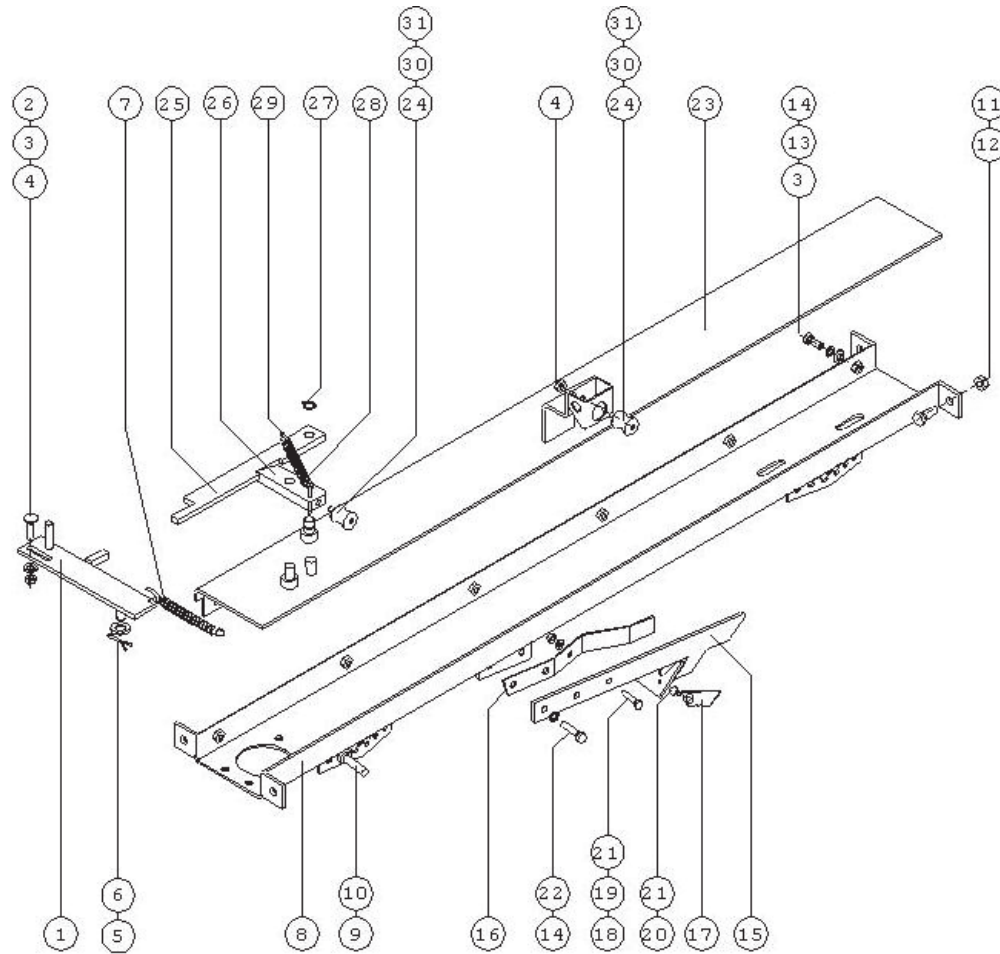
No. in dwg	Part name	Drawing or standard no.	Number of pieces		
			Z562	Z 562/1	Z562/2
1	Rolling shaft IV	Z-562 000.199.000/I	2		
2	Cover I	Z-562 000.077.000	2		
3	Bearing, K6207 RS	PN/M – 86120	2		
4	Bolt, M10x30 8.8 – B	PN/M – 82105	4		
5	Spring washer, Ø10.2	PN/M – 82008	4		
6	Cover II	Z-562 000.078.000	2		
7	Special washer	Z-562 000.000.091	2		
8	Bearing, UCFC210	PN ISO 3228:1996	2		
9	Bolt, M12x60 8.8 – B	PN/M – 82101	8		
10	Spring washer, Ø12.2	PN/M – 82008	8		
11	Wheel, Z – 22	Z-562 000.201.000/I	2		
12	Key, A10x8x36	PN/M – 85005	2		
13	Spring ring, Z – 45	PN/M – 85111	2		
14	Plain washer Ø46	PN/M – 82005	2		



Cord feeder assembly

***CORD FEEDER ASSEMBLY***

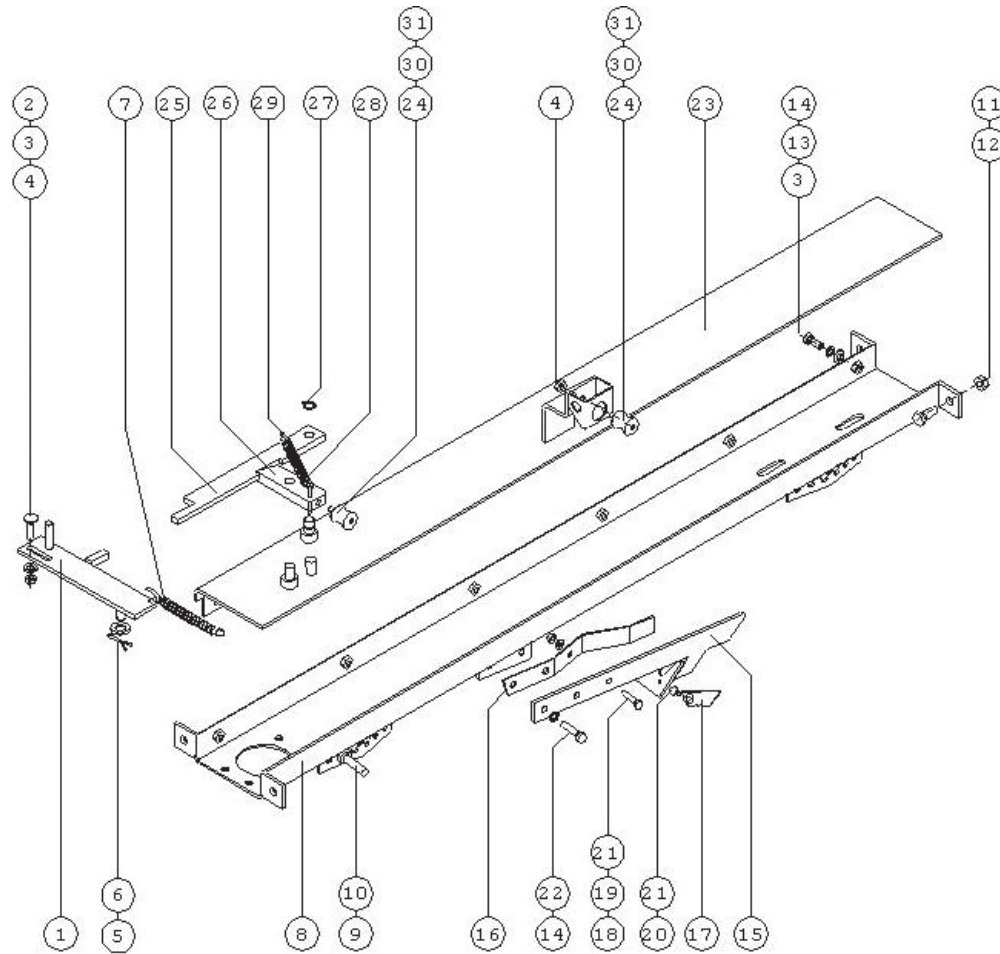
No. in dwg	Part name	Drawing or standard no.	Number of pieces		
			Z562	Z 562/1	Z562/2
1	Net (cord) storage	Z-562 061.004.001	2		
2			1		
3	Bush bracket	Z-562 000.000.019	2		
4	Ceramic roller	Z-562 000.000.044	3		
5	Steel clamping ring, M6	Z-562 000.000.043	3		
6	Nut, M6 5 – B	PN/M – 82175	6		
7	Stretcher I, L+R	Z-562 000.042.000	1+1		
8	Bolt, M6x50 5.8 – B	PN/M – 82105	2		
9	Plain washer Ø6.5	PN/M – 82030	4		
10	Nut, M6 5 – B	PN/M – 82175	2		
11	Spring	Z-562 000.042.004	2		
12	Bolt, M10x30 8.8 – B	PN/M – 82105	2		
13	Nut, M10 8 – B	PN/M – 82175	2		
14	Bolt, M10x30 5.8 – B	PN/M – 82406	3		
15	Nut, M10 5 – B	PN/M – 82175	3		



Cord wrapping mechanism body

***CORD WRAPPING MECHANISM BODY***

No. in dwg	Part name	Drawing or standard no.	Number of pieces		
			Z562	Z 562/1	Z562/2
1	Lever V	Z-562 000.016.000	1		
2	Bolt, M8x30 5.8 – B	PN/M – 82406	1		
3	Plain washer Ø8.4	PN/M – 82005	7		
4	Nut, M8 5 – B	PN/M – 82175	2		
5	Cotter pin, 3x36	PN/M – 82001	1		
6	Plain washer Ø13	PN/M – 82005	1		
7	Spring II	Z-562 000.000.054	1		
8	Base	Z-562 041.001.000	1		
9	Lever	Z-562 041.001.004	2		
10	Nut, M10 5 – B	PN/M – 82144	4		
11	Bolt, M10x30 5.8 – B	PN/M – 82105	4		
12	Nut, M10 5 – B	PN/M – 82175	4		
13	Bolt, M8x20 5.8 – B	PN/M – 82105	6		
14	Spring washer, Ø8.2	PN/M – 82008	8		
15	Bracket	Z-562 041.005.000	1		
16	Clamp	Z-562 041.005.002	1		
17	Cutting blade	Z-562 041.005.402	1		
18	Bolt, M6x70 5.8 – B	PN/M – 82105	1		
19	Nut, M6 5 – B	PN/M – 82144	1		
20	Bolt, M6x16 5.8 – B	PN/M – 82105	2		
21	Plain washer Ø6.5	PN/M – 82030	3		
22	Bolt, M8x30 5.8 – B	PN/M – 82105	2		
23	Cover	Z-562 041.002.100	1		
24	Roller	Z-562 041.002.401	2		

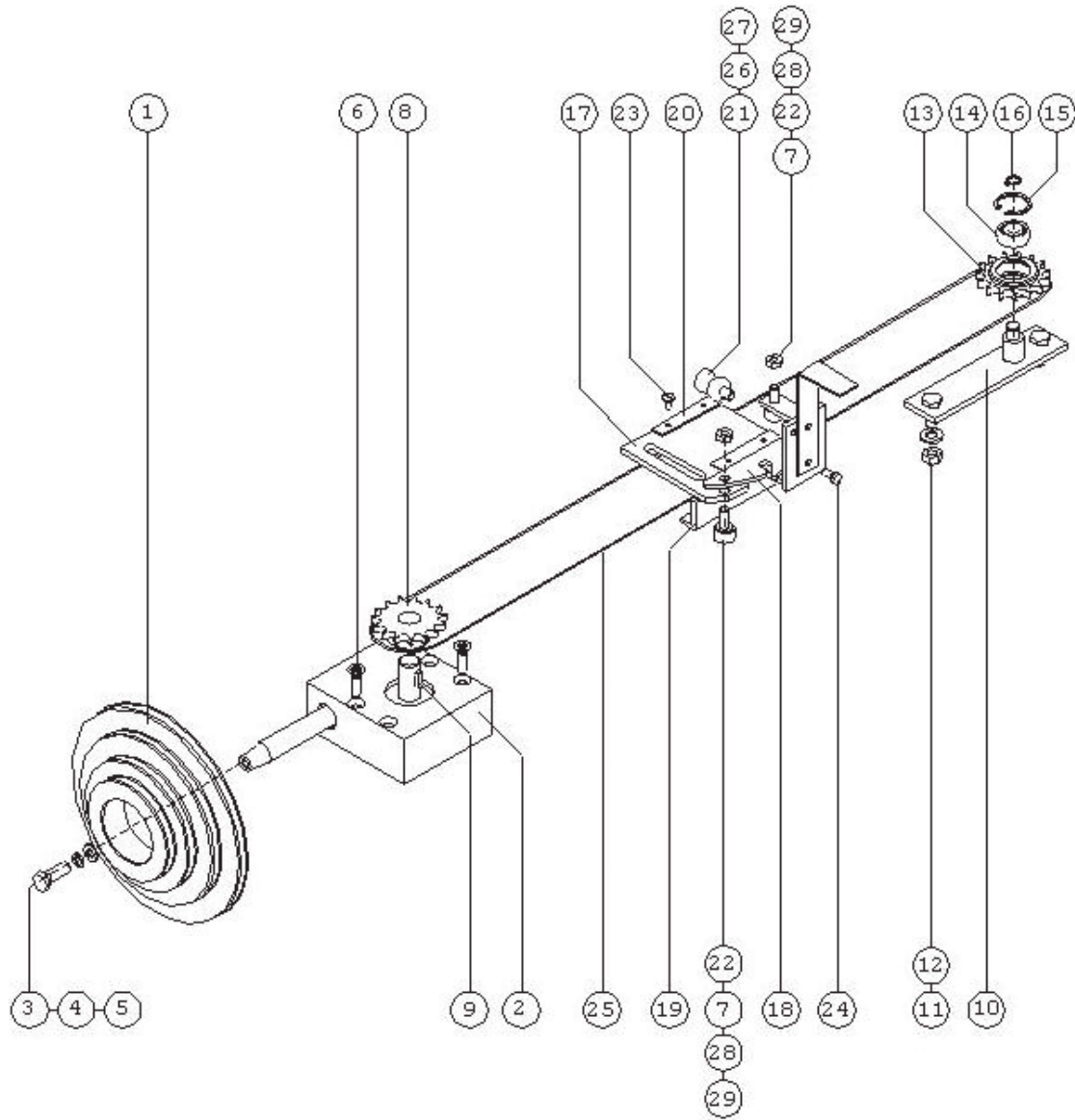


Cord wrapping mechanism body

***CORD WRAPPING MECHANISM BODY***

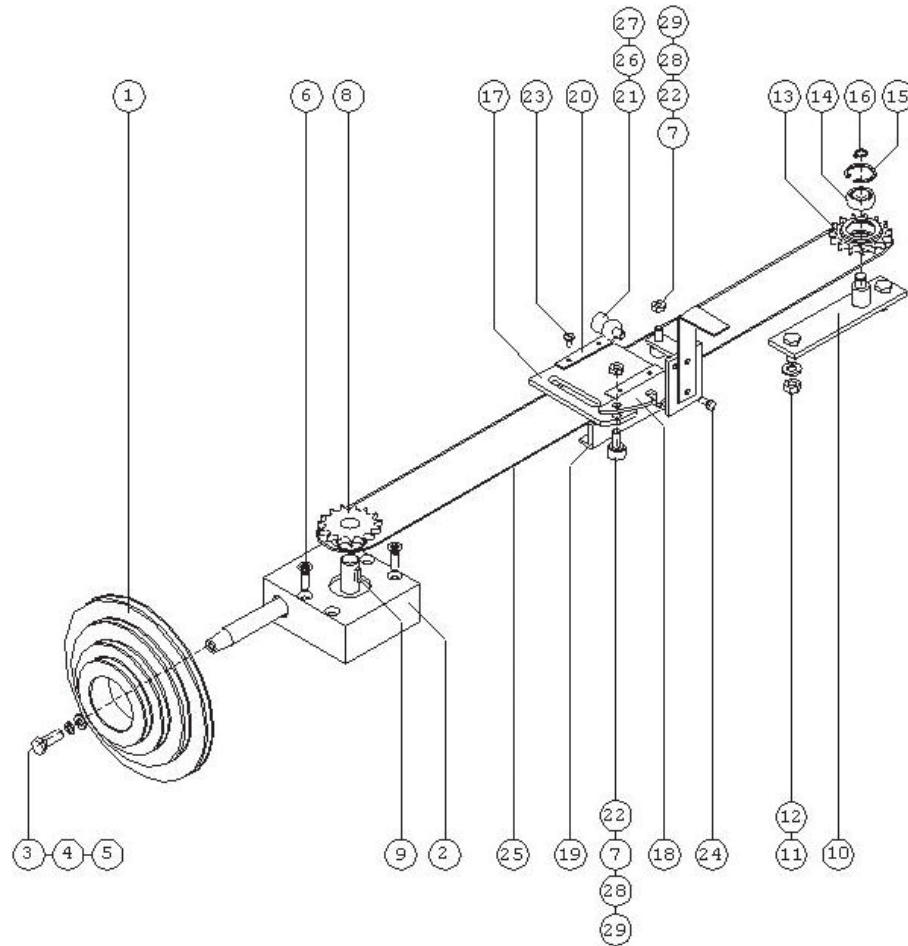
No. in dwg	Part name	Drawing or standard no.	Number of pieces		
			Z562	Z 562/1	Z562/2
25	Lever I	Z-562 041.002.600	1		
26	Lever II	Z-562 041.002.007	1		
27	Spring ring, Z – 12	PN/M – 85111	2		
28	Spring	Z-562 041.002.010	1		
29	Cotter pin, 3x28	PN/M – 82001	2		
30	Special bolt, M8	Z-562 041.002.402	2		
31	Needle bearing, HK 1012	PN/M – 86310	4		





### ***CORD WRAPPING MECHANISM***

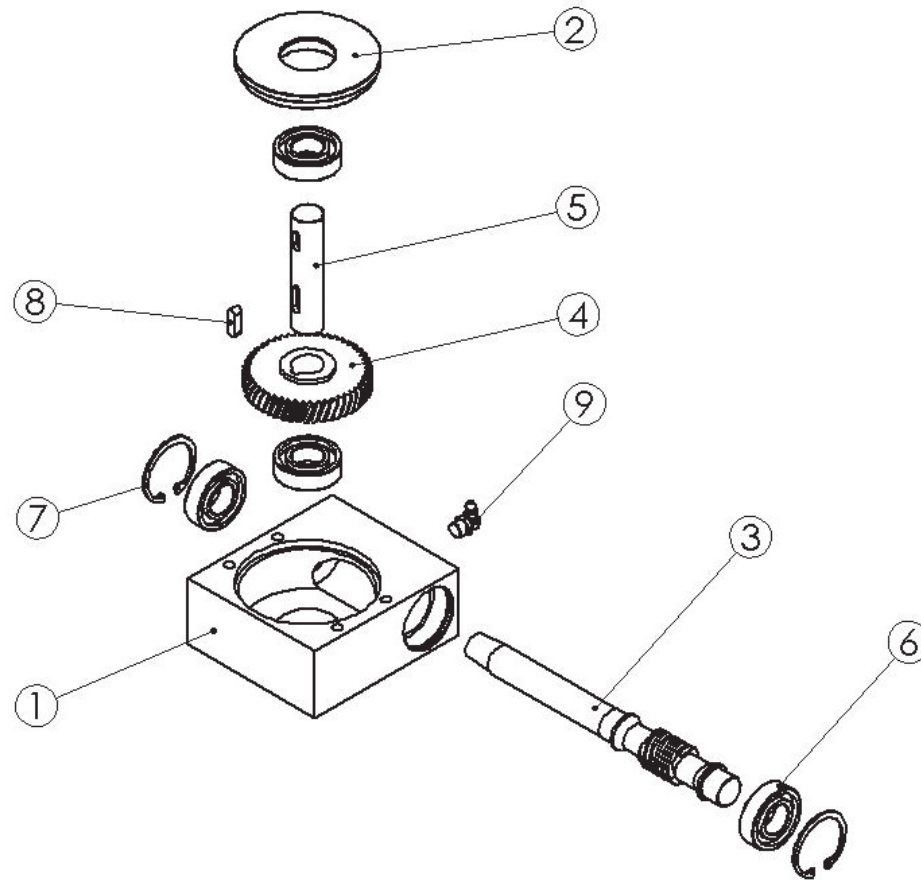
No. in dwg	Part name	Drawing or standard no.	Number of pieces		
			Z562	Z 562/1	Z562/2
1	Cord adjustment wheel	Z-562 000.000.023	1		
2	Worm gear, complete	Z-562 041.012.000	1		
3	Bolt, M8x30 5.8 – B	PN/M – 82105	1		
4	Plain washer Ø8.5	PN/M – 82030	1		
5	Spring washer, Ø8.2	PN/M – 82008	1		
6	Screw, M8x25 5.8 – B	PN/M – 82208	4		
7	Nut, M8 5 – B	PN/M – 82175	3		
8	Wheel, Z – 15 ½"	Z-562 041.012.006	1		
9	Key, A6x6x14	PN/M – 85005	1		
10	Wheel console	Z-562 041.003.000	1		
11	Plain washer Ø10.5	PN/M – 82005	2		
12	Nut, M10 5 – B	PN/M – 82144	2		
13	Wheel, Z – 15 ½"	Z-562 041.003.003	1		
14	Bearing, 6201 RS	PN/M – 86100	1		
15	Spring ring, W – 32	PN/M – 85111	1		
16	Spring ring, Z – 12	PN/M – 85111	1		
17	Guide	Z-562 041.004.000	1		
18	Clamp	Z-562 041.004.500	1		
19	Slide I	Z-562 041.004.007	1		
20	Slide II	Z-562 041.004.008	2		
21	Roller I	Z-562 041.002.401	1		
22	Bearing, Z – 608	PN/M – 86100	6		



Cord wrapping mechanism

***CORD WRAPPING MECHANISM***

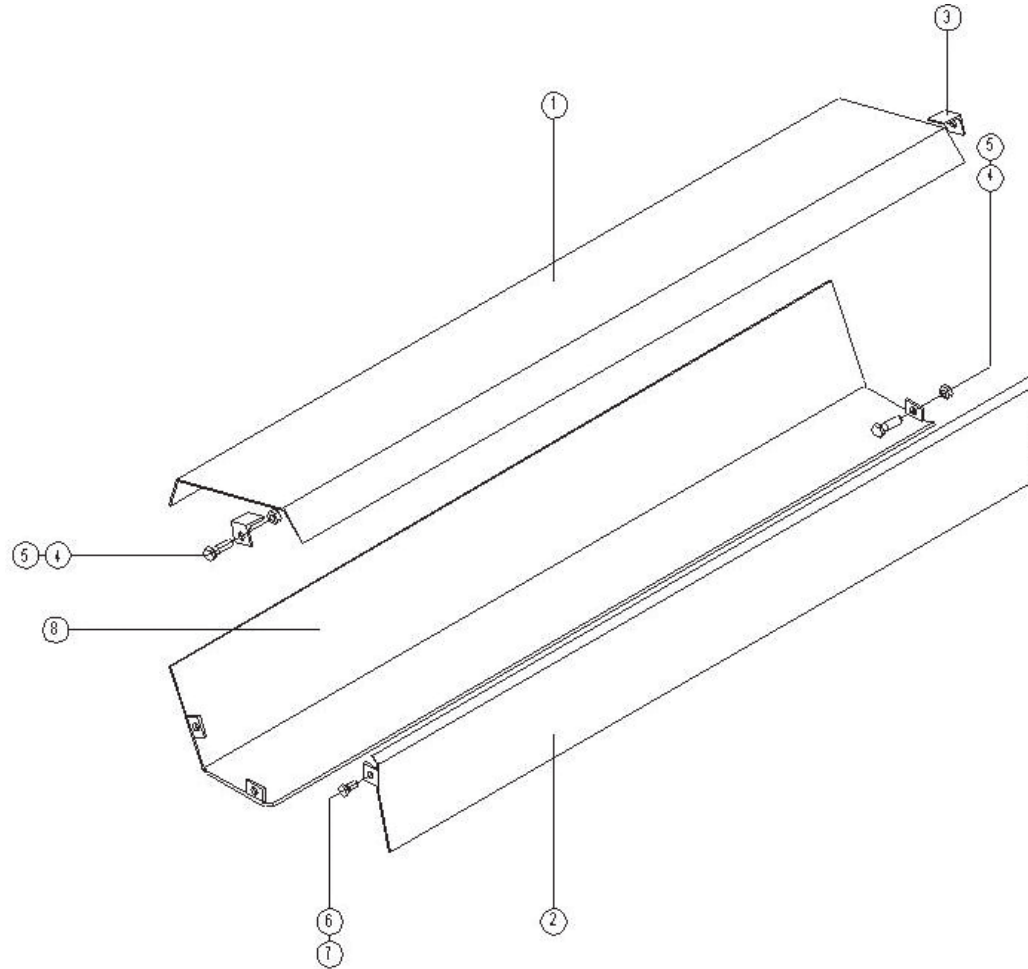
No. in dwg	Part name	Drawing or standard no.	Number of pieces		
			Z562	Z 562/1	Z562/2
23	Screw, M6x10 5.8 – B	PN/M – 82208	4		
24	Bolt, M6x16 5.8 – B	PN/M – 82105	2		
25	Chain, ½", 173 links	PN/M – 84168	1		
26	Special bolt, M8	Z-562 041.002.402	1		
27	Needle bearing, HK 1012	PN/M – 86310	2		
28	Bearing, Z – 608	PN/M – 86100	6		
29	Special bolt, M8	Z-562 041.004.013	3		



Worm gear

***WORM GEAR***

No. in dwg	Part name	Drawing or standard no.	Number of pieces		
			Z562	Z 562/1	Z562/2
1	Gear body	Z-562 041.012.001	1		
2	Cover	Z-562 041.012.002	1		
3	Worm	Z-562 041.012.003	1		
4	Worm wheel	Z-562 041.012.004	1		
5	Axle	Z-562 041.012.005	1		
6	Bearing, 6004 RS	DIN 625	4		
7	Spring ring, W42	DIN 472	2		
8	Parallel key, A6x6x20	DIN 6885A	1		
9	Grease nipple, M10x1, 90 deg. angle	DIN 71412C	1		

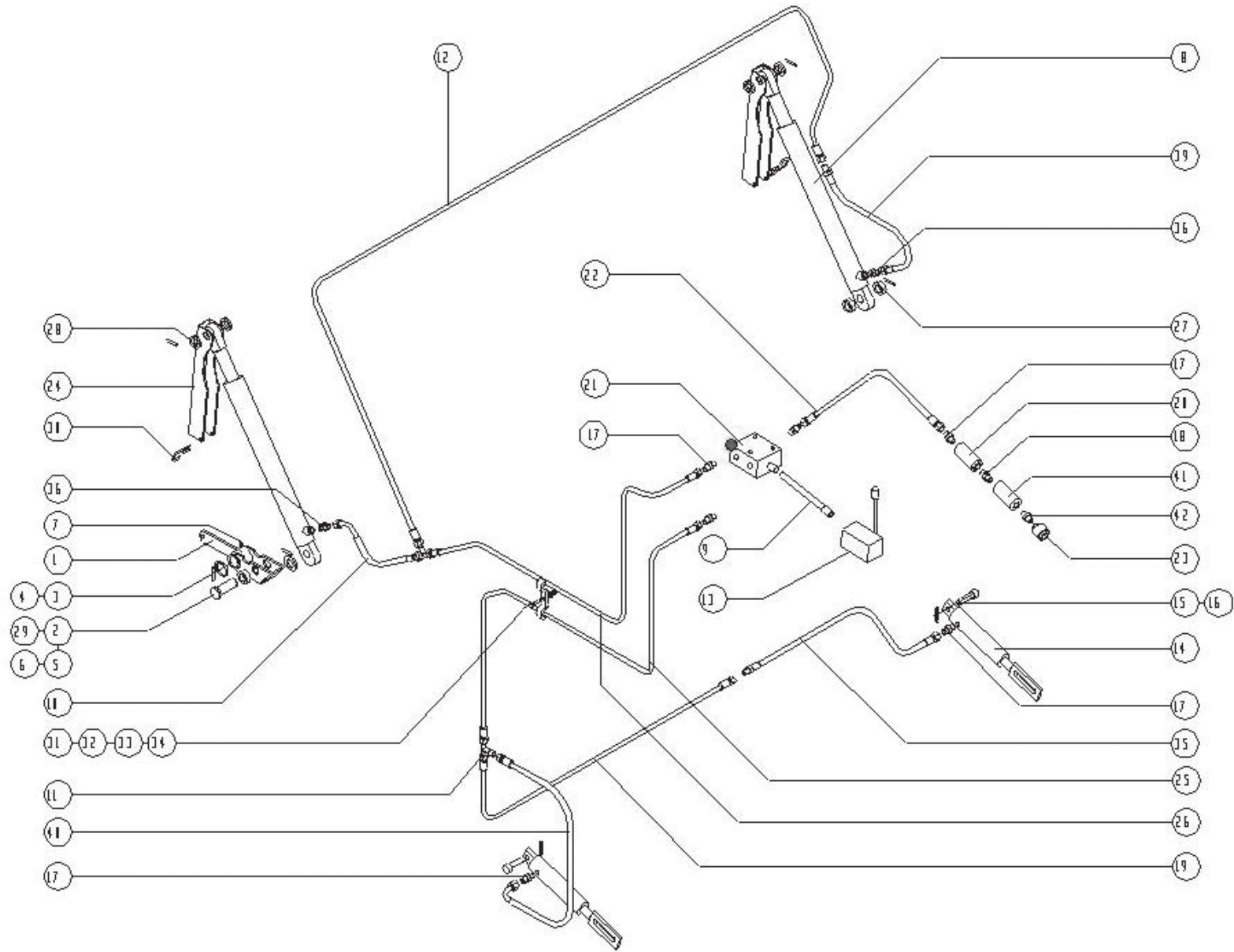


Cord wrapping mechanism guards

***CORD WRAPPING MECHANISM GUARDS***

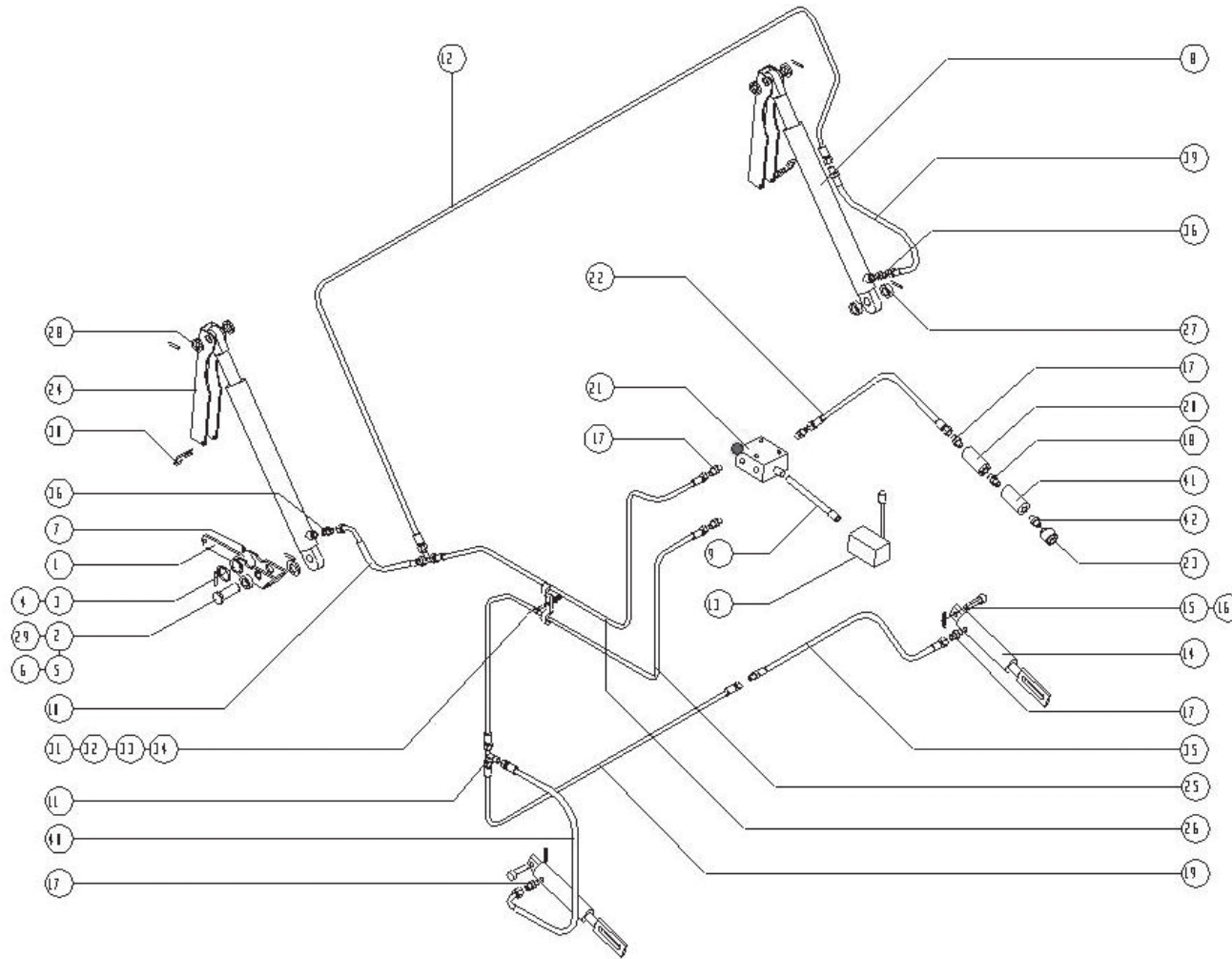
No. in dwg	Part name	Drawing or standard no.	Number of pieces		
			Z562	Z 562/1	Z562/2
1	Guard flap	Z-562 031.002.000	1		
2	Inner guard III	Z-562 000.030.000	1		
3	Guard support	Z-562 000.000.021	2		
4	Bolt, M10x30 5.8 – B	PN/M – 82105	6		
5	Nut, M10 5 – B	PN/M – 82175	6		
6	Bolt, M10x30 5.8 – B	PN/M – 82105	2		
7	Nut, M10 5 – B	PN/M – 82175	2		
8	Feeder cover	Z-562 031.002.000	1		





## *HYDRAULIC SYSTEM*

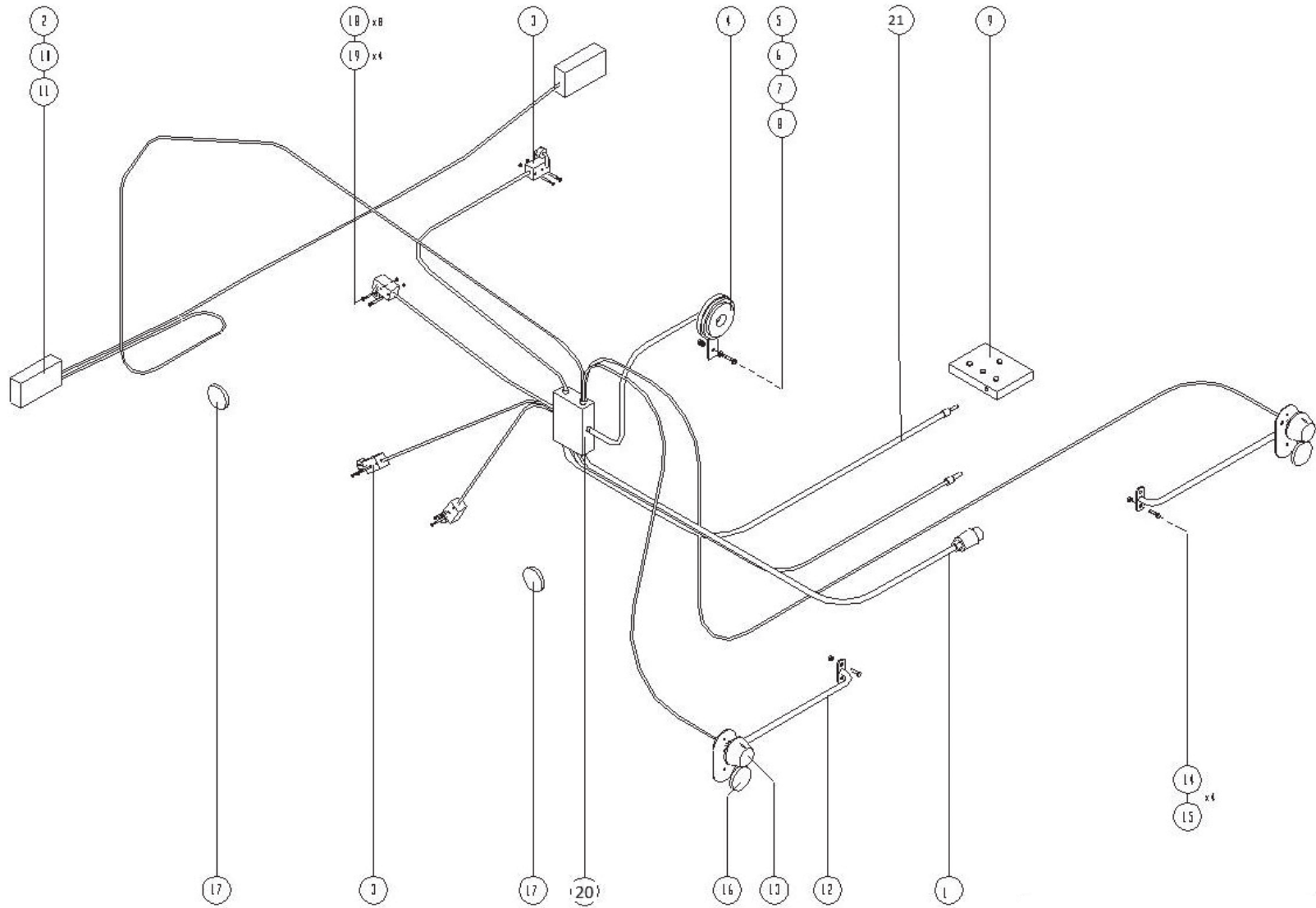
No. in dwg	Part name	Drawing or standard no.	Number of pieces		
			Z562	Z 562/1	Z562/2
1	Lever III	Z-562 000.012.000	1		
2	Pin I	Z-562 000.000.013	1		
3	Special plain washer	4/φ41/φ50	1		
4	Spring pin, 6x45	PN/M – 85023	1		
5	Special plain washer	4/φ26/φ50	4		
6	Spring pin, 6x45	PN/M – 85023	4		
7	Grease nipple, M6x1	PN/M – 86003	1		
8	Hydraulic cylinder	CN2F-16-40/400z	2		
9	DCV control cable		1		
10	Hydraulic line	AA/111/10 L-280	1		
11	Stud body, T-connection, M18x1.5	PN/M – 73145	2		
12	Hydraulic line, steel	Z-562 092.000.011	1		
13	DCV control lever		1		
14	Hydraulic cylinder	CNS08-16-25/130	2		
15	Pin	Z-562 000.000.197	2		
16	Spring pin, 6x45	PN/M – 85023	2		
17	Stud body, straight, 3/8"xM18x1.5	ZN/140	6		
18	Connector, 3/8"- 1/2"	24ZP3/8-1/2	1		
19	Hydraulic line, steel	Z-562 092.000.012	1		
20	Pressure reducing valve 3/8"	VRFU 380SP1 – 4N	1		
21	Hydraulic directional control valve	24ZTS	1		
22	Hydraulic line	A90A/111/10 L-2500	1		



Hydraulic system

## *HYDRAULIC SYSTEM*

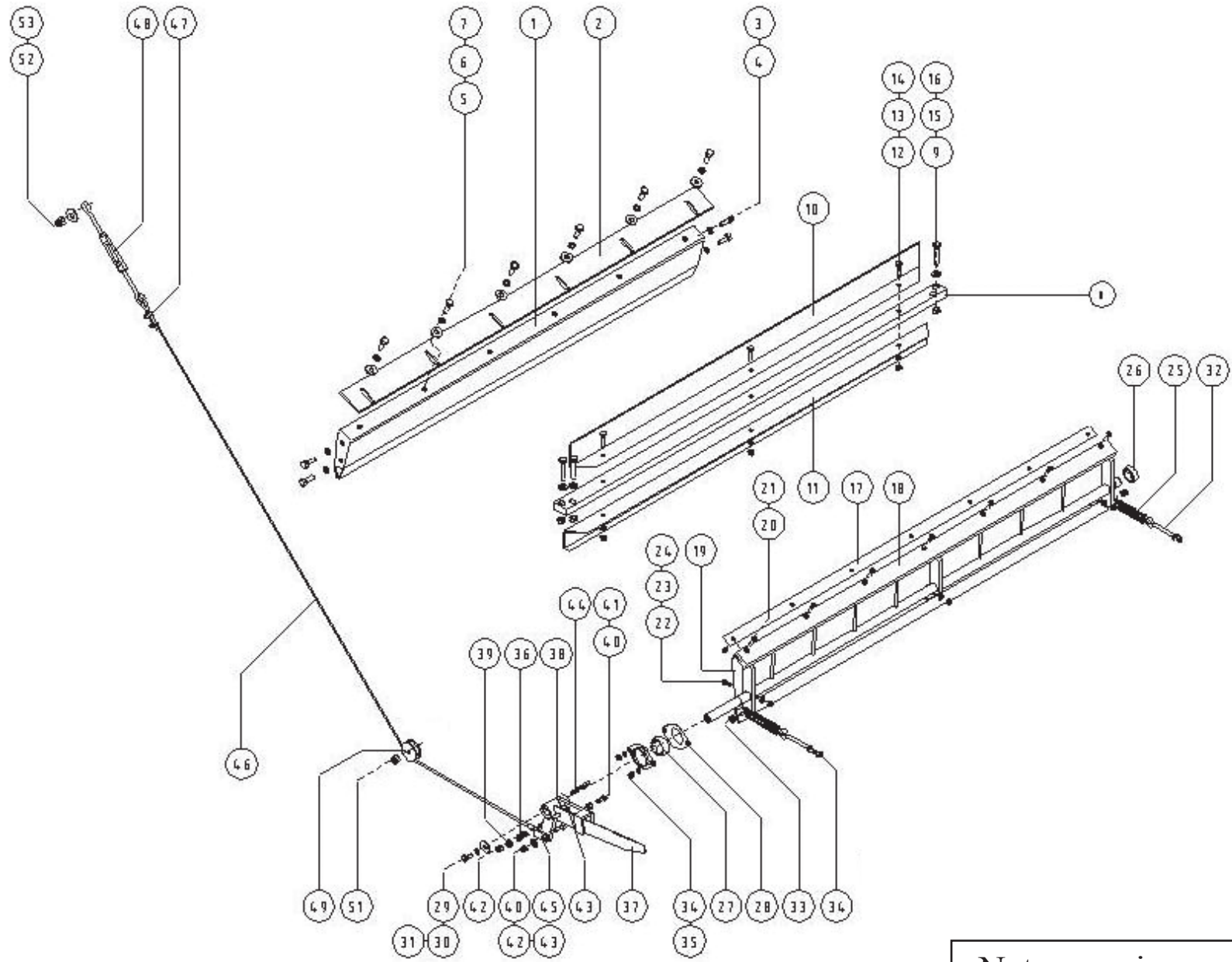
No. in dwg	Part name	Drawing or standard no.	Number of pieces		
			Z562	Z 562/1	Z562/2
23	Valve – plug, quick-release coupling M22x1.5	24ZWE13	1		
24	Cylinder lock	Z-562 000.000.004	2		
25	Hydraulic line, steel	Z-562 092.000.013	1		
26	Hydraulic line, steel	Z-562 092.000.014	1		
27	Spacing bushing II	Z-562 000.000.022	2		
28	Spacing bushing I	Z-562 000.000.020	4		
29	Spacing bushing III	Z-562 000.000.032	1		
30	Farming-type pin, $\varnothing$ 5	DIN 11024	2		
31	Hydraulic line bracket	Z-562 000.000.210	1		
32	Bolt, M8x30 5.8 – B	PN/M – 82105	1		
33	Plain washer Ø8.4	PN/M – 82005	1		
34	Nut, M8 5 – B	PN/M – 82175	1		
35	Hydraulic line	AB/111/10 L-400	1		
36	Stud body – straight M16x1.5/M18x1.5	PN/M – 73140	2		
37	DCV grip	Z-562 215.000.000	1		
38	Nut, M6 5 – B	PN/M – 82144	2		
39	Hydraulic line	A45B/111/10/ L-350	1		
40	Hydraulic line	A90A/111/10/ L-350	1		
41	Oil filter	FLA 11 BO4	1		
42	Connector, 1/2" – M22x1.5	24PP1/2 M22/1,5 FI15	1		



Electrical system

***ELECTRICAL SYSTEM***

No. in dwg	Part name	Drawing or standard no.	Number of pieces		
			Z562	Z 562/1	Z562/2
1	LP01 meter wire harness	26WPE	1		
	LP02 meter wire harness	POD-ELK-000154	1		
2	Tail cluster lamp	0720012200	2		
3	End switch		4		
4	Sound signal – horn		1		
5	Bolt, M8x25 5.8 – B	PN/M – 82105	1		
6	Spring washer, Ø8.2	PN/M – 82008	1		
7	Nut, M8 5 – B	PN/M – 82144	1		
8	Plain washer Ø8.5	PN/M – 82030	1		
9	LP01 press meter	25LP	1		
9	LP02 press meter	POD-ELK-000151			
10	Light bulb, 12V/21W		4		
11	Light bulb, 12V/5W		2		
12	Front right lamp console	Z-562 000.220.000L	1		
	Front left lamp console	Z-562 000.220.000P	1		
13	Front lamp, white		2		
14	Bolt, M8x20 5.8 – B	PN/M – 82105	4		
15	Nut, M8 5 – B	PN/M – 82175	4		
16	White reflective light		2		
17	Orange reflective light		4		
18	Screw, M4x50 5.8 – B	PN/M – 82008	8		
19	Nut, M4 5 – B	PN/M – 82144	4		
20	LP02 controller module	POD-ELK-000152			
21	LP02 meter cable	POD-ELK-000153			

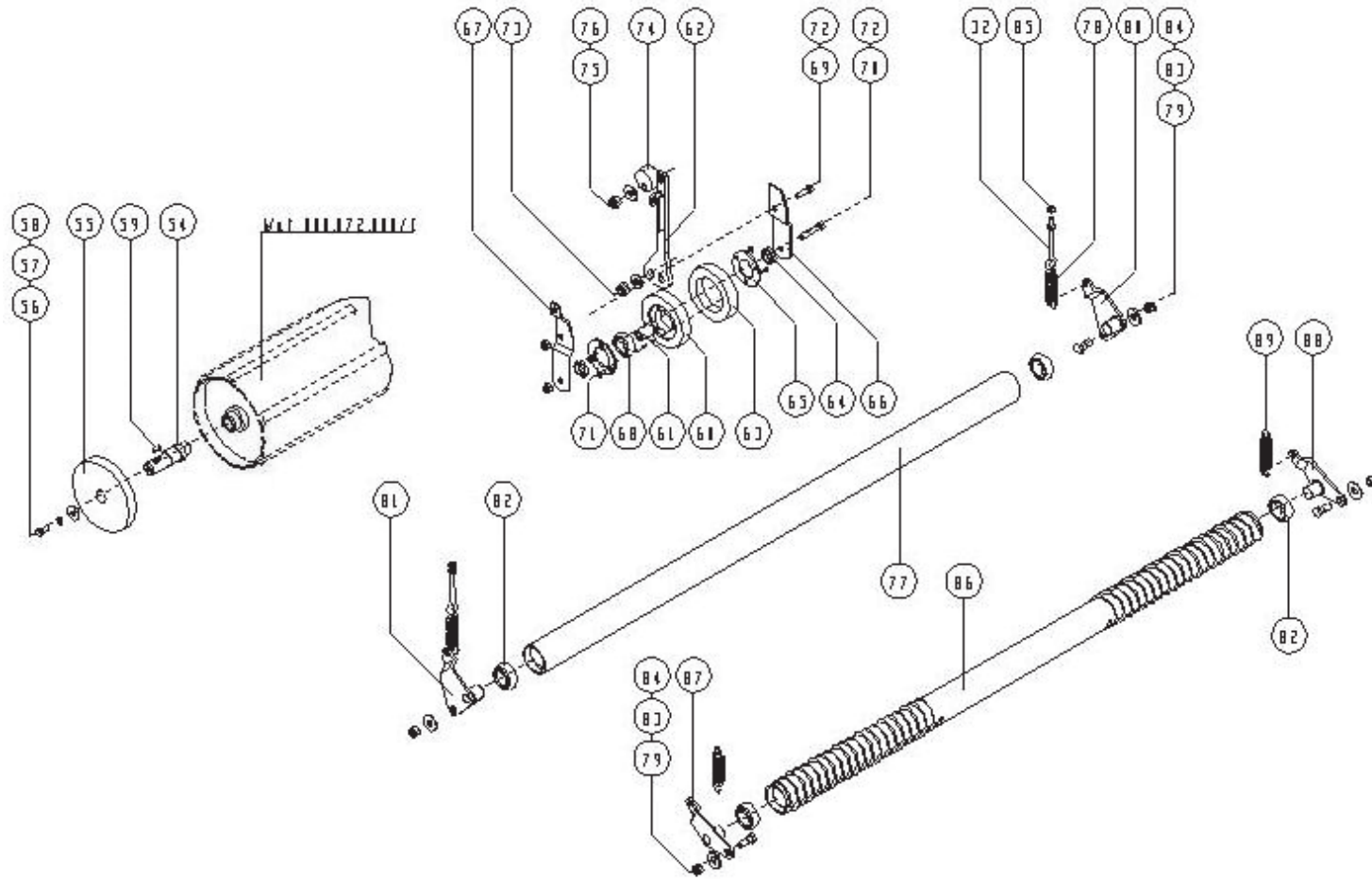


Net wrapping mechanism

### ***NET WRAPPING MECHANISM***

No. in dwg	Part name	Drawing or standard no.	Number of pieces		
			Z562	Z 562/1	Z562/2
1	Inner guard II	Z-562 000.028.000/I	1		
2	Strip	Z-562 000.028.006	1		
3	Bolt, M10x30 8.8 – B	PN/M – 82105	4		
4	Spring washer, $\curvearrowright$ 10.2	PN/M – 82008	4		
5	Bolt, M10x30 8.8 – B	PN/M – 82105	6		
6	Plain washer $\curvearrowright$ 10.5	PN/M – 82030	6		
7	Spring washer, $\curvearrowright$ 10.2	PN/M – 82008	6		
8	Counterblade	Z-562 061.001.001	1		
9	Plain washer $\curvearrowright$ 10.5	PN/M – 82005	4		
10	Guard I	Z-562 061.007.001	1		
11	Guard II	Z-562 061.001.002	1		
12	Bolt, M8x35 8.8 – B	PN/M – 82105	3		
13	Spring washer, $\curvearrowright$ 8.2	PN/M – 82008	3		
14	Nut, M8 8 – B	PN/M – 82144	3		
15	Bolt, M10x55 8.8 – B	PN/M – 82101	4		
16	Nut, M10 8 – B	PN/M – 82144	4		
17	Blade	Z-562 061.001.101	1		
18	Blade holder, complete	Z-562 061.001.102/107	1		
19	Guard IV	Z-562 061.007.004	1		
20	Screw, M6x30 8.8 – B	PN/M – 82207	7		
21	Nut, M6 8 – B	PN/M – 82175	7		
22	Screw, M6x20 4.8 – B	PN/M – 82207	3		
23	Plain washer $\curvearrowright$ 6.5	PN/M – 82030	3		
24	Nut, M6 8 – B	PN/M – 82175	3		





Net wrapping mechanism

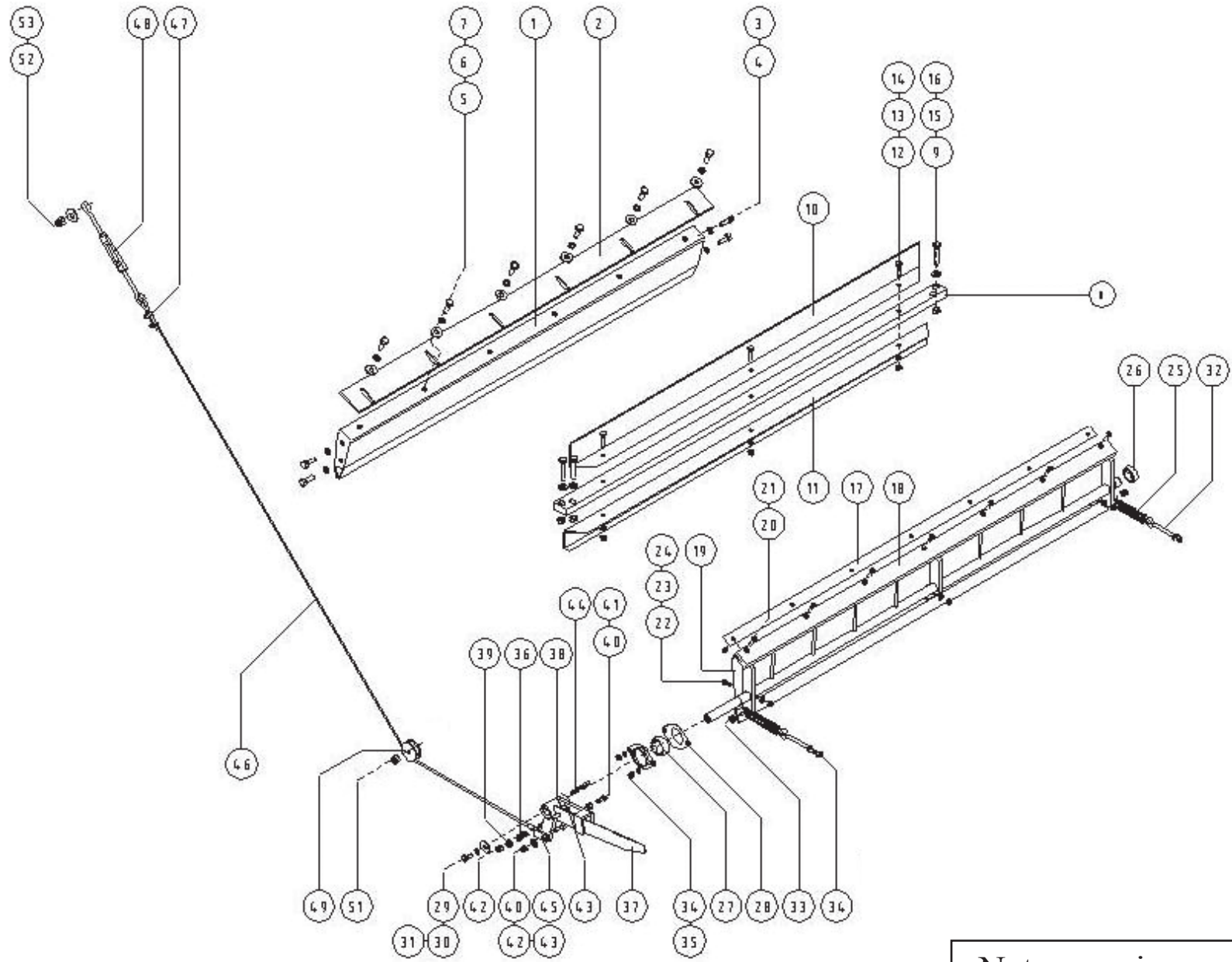
### ***NET WRAPPING MECHANISM***

No. in dwg	Part name	Drawing or standard no.	Number of pieces		
			Z562	Z 562/1	Z562/2
25	Spring	Z-562 061.001.003	2		
26	Bearing, 6004 2RS	PN/M – 86100	2		
27	Self-aligning bearing, FD204	PN/M – 86120	2		
28	Bearing mount	T204	4		
29	Bolt, M8x20 8.8 – B	PN/M – 82105	5		
30	Plain washer ⌀ 8.5	PN/M – 82030	1		
31	Spring washer, ⌀ 8.2	PN/M – 82008	1		
32	Bolt, CD, M8x70	BN – 1902 – 28	4		
33	Nut, M8 8 – B	PN/M – 82175	6		
34	Nut, M8 8 – B	PN/M – 82144	6		
35	Spring washer, ⌀ 8.2	PN/M – 82008	2		
36	Spring	Z-562 061.005.704	1		
37	Measuring blade	Z-562 061.005.701	1		
38	Measuring body	Z-562 061.005.800	1		
39	Washer ⌀ 10.5	PN/M – 82030	1		
40	Bolt, M8x25 8.8 – B	PN/M – 82105	2		
41	Nut, M8 8 – B	PN/M – 82144	1		
42	Nut, M8 8 – B	PN/M – 82175	2		
43	Plain washer ⌀ 8.5	PN/M – 82030	1+1		
44	Parallel key, A6x6x63	PN/M – 85005	1		
45	Fork	Z-562 061.010.004	1		
46	Cable	Z-562 061.010.002	1		
47	Bow clamp, 6.5	PN/M-80241	2		



### ***NET WRAPPING MECHANISM***

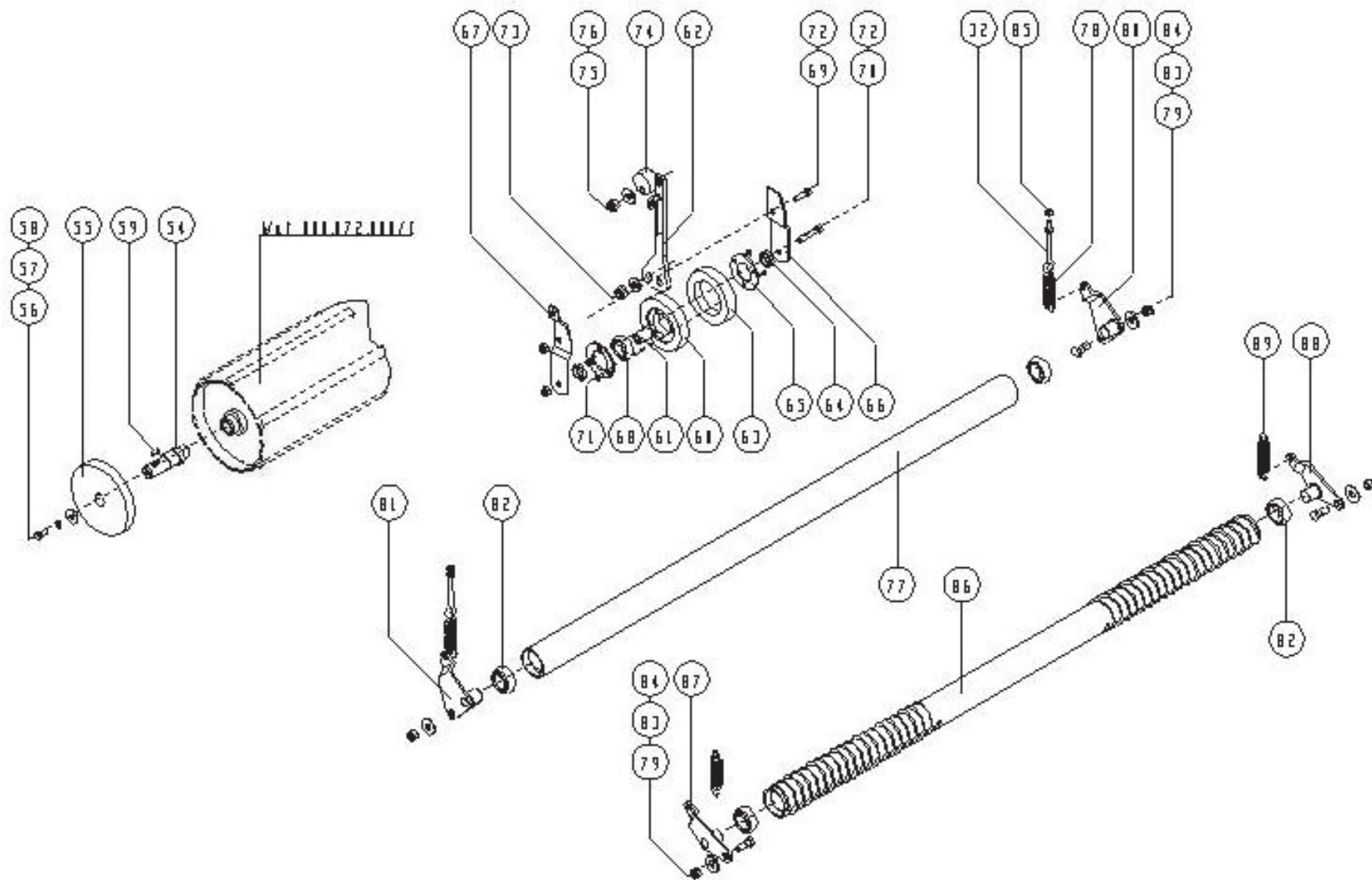
No. in dwg	Part name	Drawing or standard no.	Number of pieces		
			Z562	Z 562/1	Z562/2
48	Tensioning nut, complete, M8x110	DIN 1480	1		
49	Cable wheel	Z-562 061.010.100	1		
50	Welded spreading bar	Z-562 061.011.210	1		
51	Nut, M10 8 – B	PN/M – 82175	1		
52	Plain washer ⌀ 13	PN/M – 82030	1		
53	Nut, M12 8 – B	PN/M – 82175	1		
54	Disc pivot	Z-562 061.005.003.1	1	Pivot, RH thread	
(54)	Disc pivot	Z-562 061.005.003	1	Pivot, LH thread	
55	Disc I	Z-562 061.005.004	1		
56	Bolt, M8x20 8.8 – B	PN/M – 82105	1		
57	Plain washer ⌀ 8.5	PN/M – 82030	1		
58	Spring washer, ⌀ 8.2	PN/M – 82008	1		
59	Parallel key, A6x6x20	PN/M – 85111	1		
60	Inner intermediate disc	Z-562 061.005.051	1		
(60)	Intermediate disc	Z-562 061.005.005	1		
61	Bushing	Z-562 061.005.006	1		
62	Tensioning arm	Z-562 061.005.070	1		
63	Rubber-coated intermediate disc	Z-562 061.005.052	1		
64	Washer	Z-562 061.005.010	2		
65	Lid	Z-562 061.005.011	2		
66	Lever sheet	Z-562 061.005.101.1	1	For disc Z-562 061.005.002.1	
(66)	Lever sheet	Z-562 061.005.101	1		
67	Lever sheet I	Z-562 061.005.102.1	1	For disc Z-562 061.005.002.1	
(67)	Lever sheet I	Z-562 061.005.102	1		
68	Bearing, 6004 2RS	PN/M – 86100	1		
69	Bolt, M8x30 8.8 – B	PN/M – 82105	1		



Net wrapping mechanism

### ***NET WRAPPING MECHANISM***

No. in dwg	Part name	Drawing or standard no.	Number of pieces		
			Z562	Z 562/1	Z562/2
70	Bolt, M8x45 8.8 – B	PN/M – 82105	1		
71	Screw, M5x8 4.8 – B	PN/M – 82208	6		
72	Nut, M8 8 – B	PN/M – 82175	2		
73	Nut, M12 8 – B	PN/M – 82175	1		
74	Stop	Z-562 061.005.017	1		
75	Nut, M10 8 – B	PN/M – 82175	1		
76	Plain washer $\varnothing$ 10.5	PN/M – 82030	1		
77	Roller	Z-562 061.002.001	1		
78	Spring	Z-562 061.002.002	2		
79	Roller bolt	Z-562 061.003.004	4		
80	Left arm	Z-562 061.002.200	1		
81	Right arm	Z-562 061.002.300	1		
82	Bearing, 6205 2RS	PN/M – 86100	4		
83	Nut, M10 8 – B	PN/M – 82175	4		
84	Plain washer $\varnothing$ 13	PN/M – 82030	4		
85	Nut, M8 8 – B	PN/M – 82144	4		
86	Stretching roller	Z-562 061.003.000	1		
87	Right arm	Z-562 061.002.100	1		
88	Left arm	Z-562 061.002.200	1		
89	Spring	Z-562 061.003.003	2		
90	Rubber roller	Z-562 061.002.100	1		
91	Nut, M8 8 – B	PN/M – 82144	2		
92	Parallel key, A6x6x20	PN/M – 85005	1		
93	Slow-speed hub	Z-562 061.005.001	1		
(94)	Driving disc	Z-562 061.005.002	1		





### ***NET WRAPPING MECHANISM***

No. in dwg	Part name	Drawing or standard no.	Number of pieces		
			Z562	Z 562/1	Z562/2
94	Driving disc	Z-562 061.005.002.1	1		
95	Slow-speed, Z – 18		1		
96	Bolt, M6x16 8,8 – B	PN/M – 82105	4		
97	Plain washer ⌀ 6.4	PN/M – 82005	4		
98	Bolt, M8x20 8.8 – B	PN/M – 82105	3		
99	Spring washer, ⌀ 8.2	PN/M – 82008	5		
100	Plain washer ⌀ 8.5	PN/M – 82030	1		
101	Spring ring, Z – 35	PN/M – 85111	1		
102	Guard III	Z-562 061.007.003	1		
103	V-belt	SPZ 1000	1		
104	Flat bar	Z-562 061.005.015	1		
105	Bolt, M10x35 8.8 – B	PN/M – 82105	1		
106	Plain washer ⌀ 10.5	PN/M – 82030	1		
107	Nut, M10 8 – B	PN/M – 82175	1		
108	Wheel w/hub	Z-562 061.005.300	1		
109	V-belt wheel axle, welded	Z-562 061.005.500	1		
110	Bearing, 6002 2RS	PN/M – 86100	2		
111	Spring ring, W – 32	PN/M – 85111	2		
112	Bolt, M10x20 8.8 – B	PN/M – 82105	2		
113	Plain washer ⌀ 10.5	PN/M – 82030	2		
114	Spring washer, ⌀ 10.2	PN/M – 82008	2		
115	Plain washer ⌀ 8.5	PN/M – 82030	1		
116	Nut, M8 8 – B	PN/M – 82175	1		

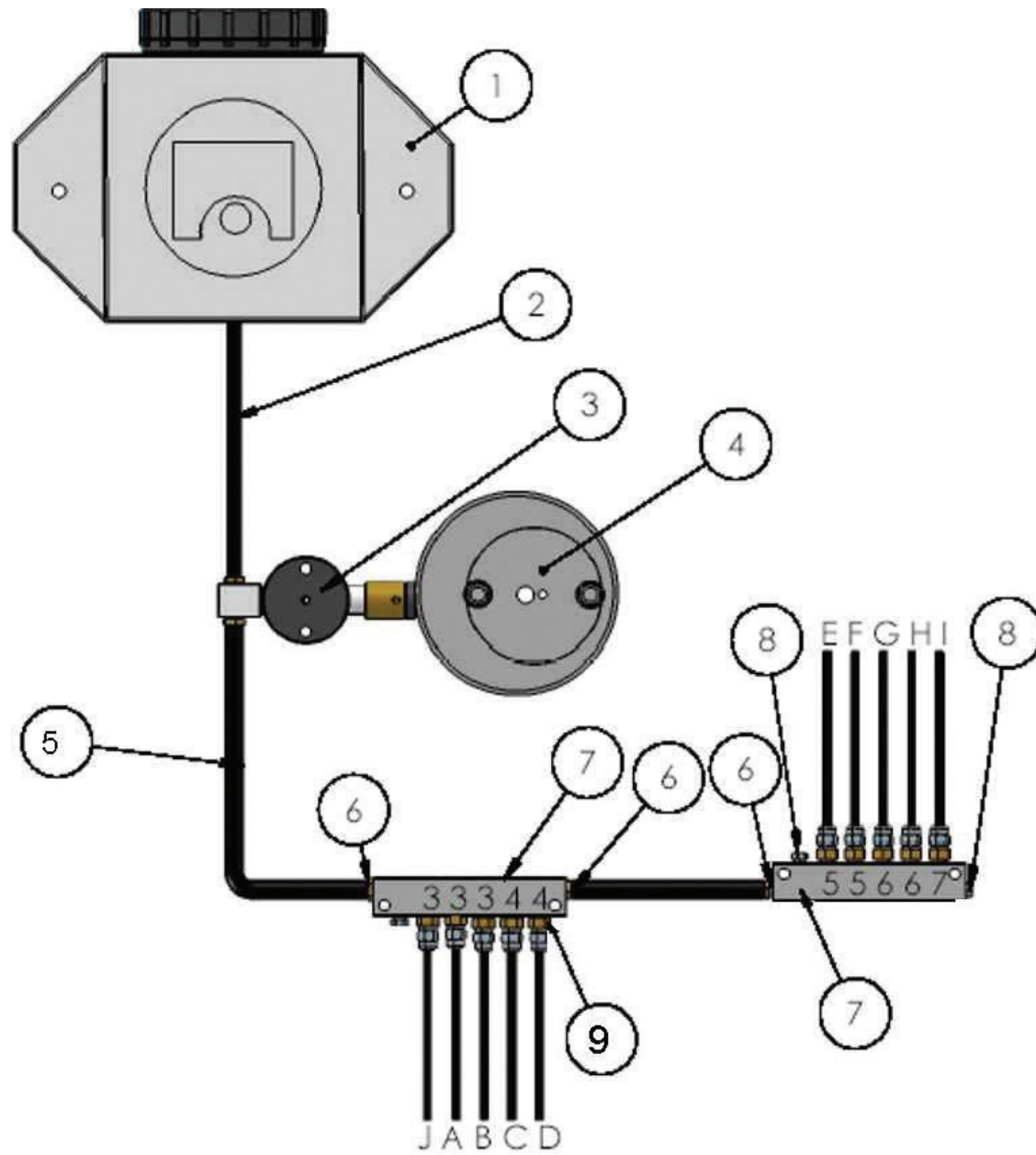




***NET WRAPPING MECHANISM***

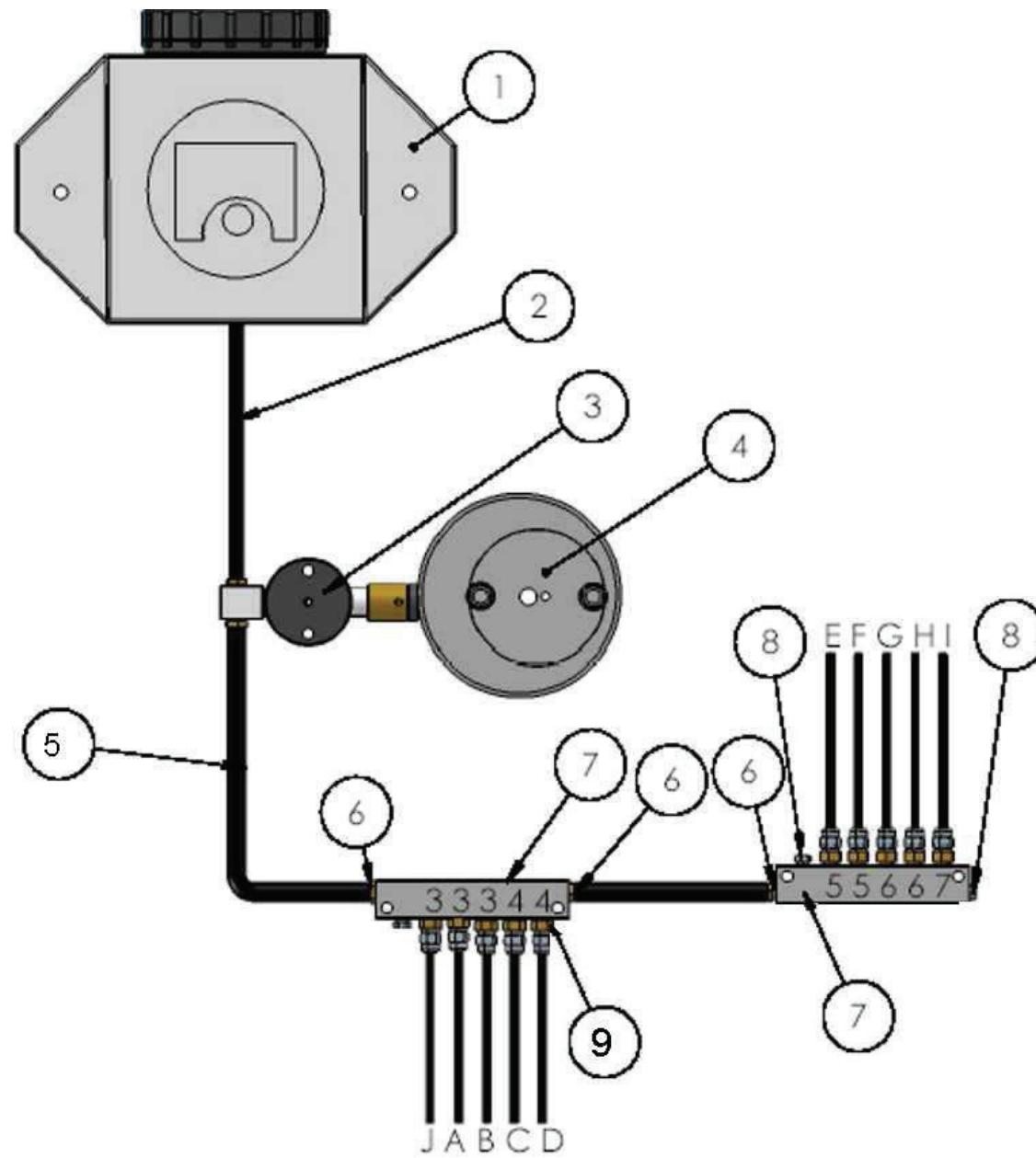
No. in dwg	Part name	Drawing or standard no.	Number of pieces		
			Z562	Z 562/1	Z562/2
117	Sheet I	Z-562 061.004.001	2		
118	Brake	Z-562 061.004.100	1		
119	Screw, M8x25	PN/M – 82207	8		
120	Plain washer ⌀ 10.5	PN/M – 82030	8		
121	Spring washer, ⌀ 10.2	PN/M – 82008	8		
122	Nut, M8 8 – B	PN/M – 82144	8		

Detail Z-562 061.005.002.1 is a die-stamped sheet.



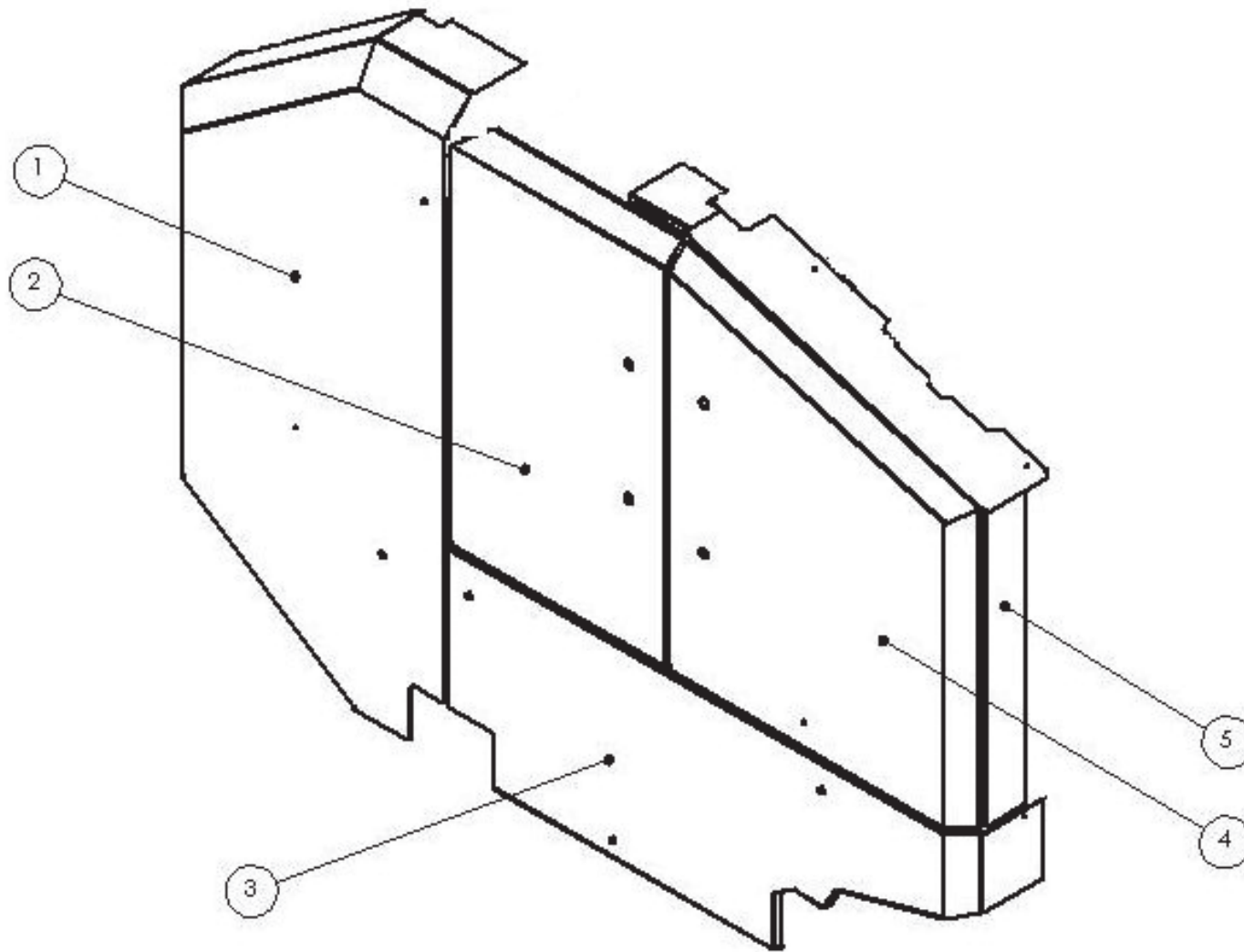
## ***CENTRAL LUBRICATION SYSTEM***

No. in dwg	Part name	Drawing or standard no.	Number of pieces		
			Z562	Z 562/1	Z562/2
1	Tank assembly				
	Oil tank, complete	STS	1		
	Oil filter	FP3320	1		
	Bolt, M8x40	PN 82105	2		
	Washer 8	PN 82030	2		
	Nut, M8	PN 82175	2		
2	Power cord	Ø9x2	1		
3	Pump assembly				
	Pump	PMM2CD	1		
	Guide		1		
	Pump console	Z-562 062.000.100	1		
	Bolt, M6x40	PN 82105	2		
	Washer 6	PN 82030	2		
	Nut, M6	PN 82175	2		
	Bolt, M8x20	PN 82105	2		
	Nut, M8	PN 82175	2		
4	Eccentric wheel assembly				
	Eccentric wheel	CAMKR	1		
	Rawlplug Ø6x26		1		
5	Przewód	Ø8x1.5			
6	Stud coupling,	F1KR	3		
7	Directional control valve assembly				
	Directional control valve	MFD6X	2		
	Bolt, M6x30	PN 82105	4		
8	Plug	B516	3		



***CENTRAL LUBRICATION SYSTEM***

No. in dwg	Part name	Drawing or standard no.	Number of pieces		
			Z562	Z 562/1	Z562/2
9	Dosing tip	IM23	3		
		IM24	2		
		IM25	2		
		IM26	2		
		IM27	1		
	Nut	N532	10		
	Stopping ring	EO532	10		
10	Przewód	Ø4x0.85			
11	Brush tip assembly				
	Angle coupling	EQU516	10		
	Nut	N532	10		
	Stopping ring	EO532	10		
	Single brush tip	ABR516	9		
	Double brush tip	ABR81CL	1		

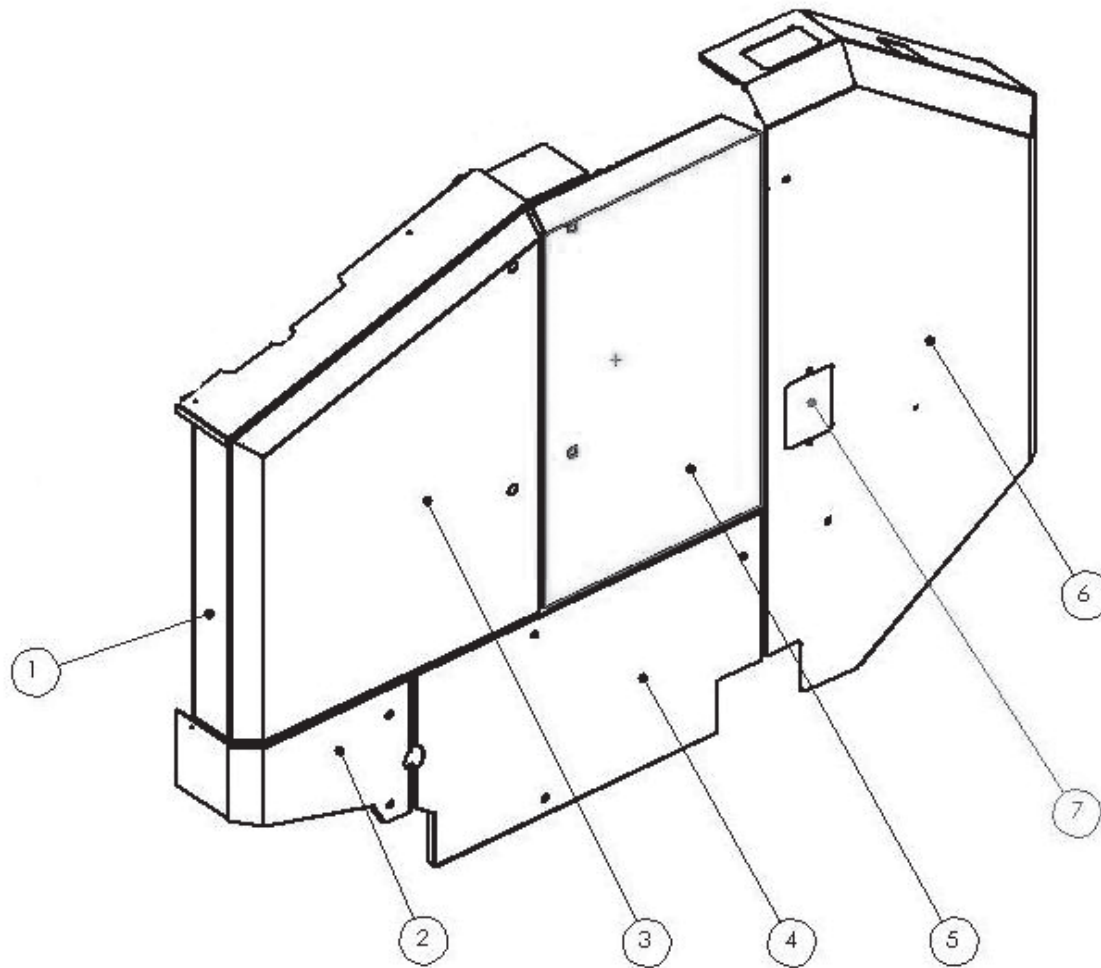


Right side guards

***RIGHT SIDE GUARDS***

No. in dwg	Part name	Drawing or standard no.	Number of pieces		
			Z562	Z 562/1	Z562/2
1	Rear guard, right	Z562 000.000.051RP			
2	Middle guard, right	Z562 000.048.000RP			
3	Lower guard, right	Z562 018.021.070			
4	Front guard, right	Z562 018.021.200			
5	Front guard	Z562 018.021.400			
6					

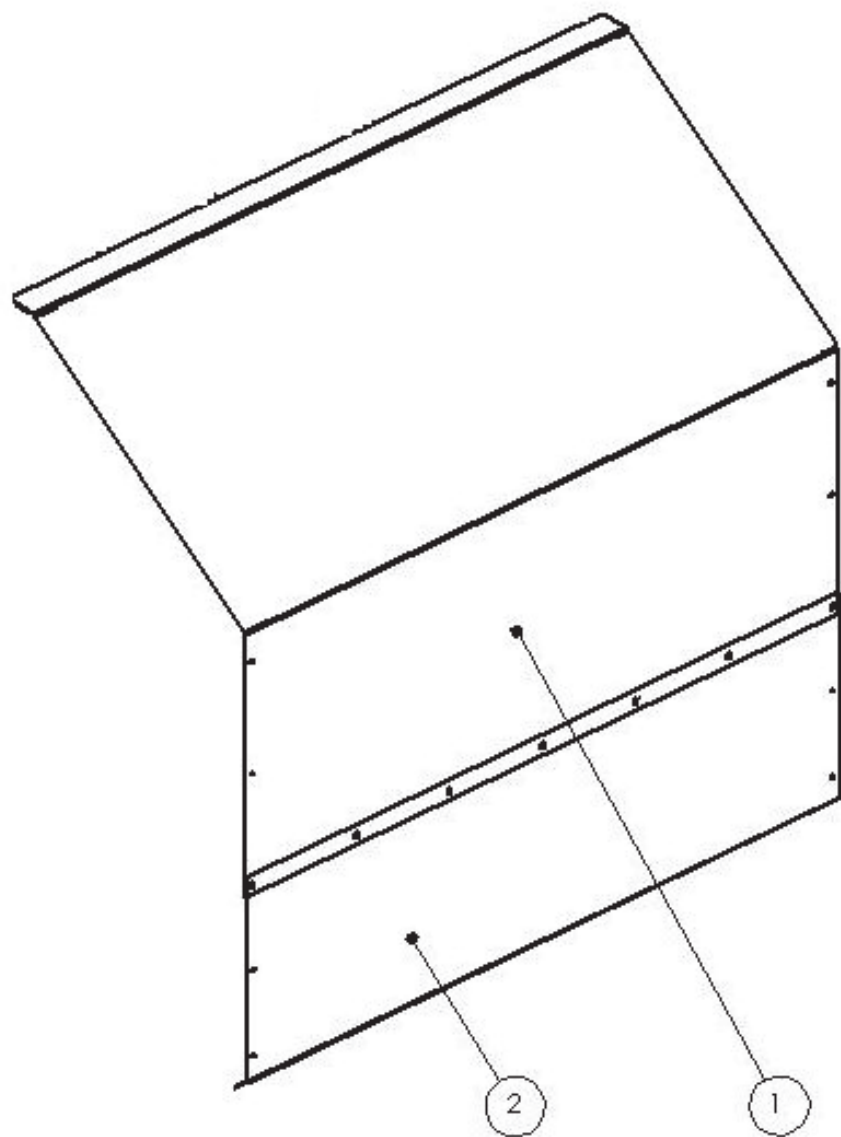




Left side guards

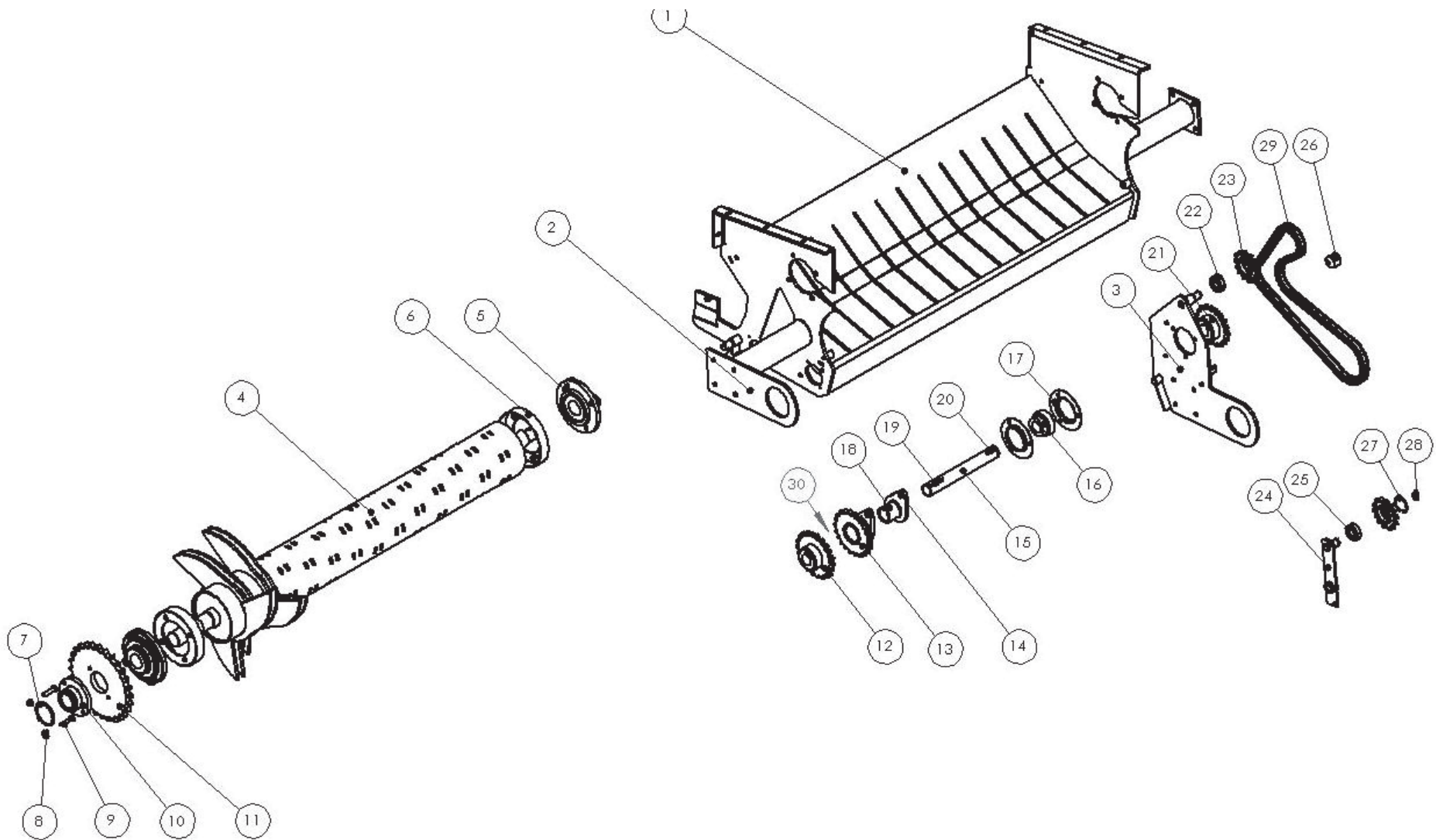
***LEFT SIDE GUARDS***

No. in dwg	Part name	Drawing or standard no.	Number of pieces		
			Z 562	Z 562/1	Z562/2
1	Left guard	Z562 018.021.300			
2	Lower guard, left	Z562 018.021.050			
3	Front guard, left	Z562 018.021.100			
4	Lower guard, left	Z562 018.021.060			
5	Middle guard, left	Z562 000.048.000RL			
6	Rear guard, left	Z562 000.000.051RL			
7	Cover	Z562 000.000.221			



***REAR GUARDS***

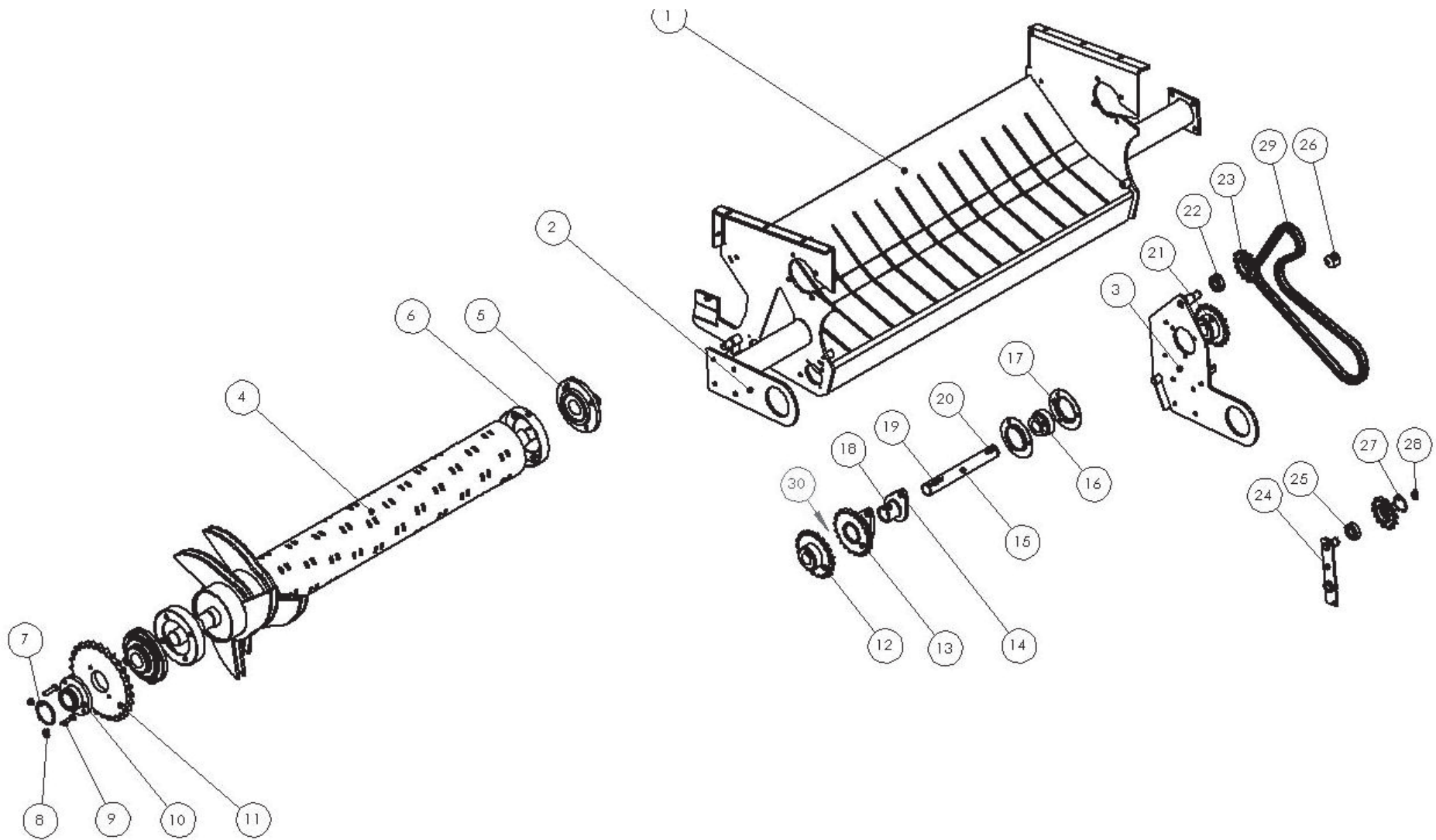
No. in dwg	Part name	Drawing or standard no.	Number of pieces		
			Z562	Z 562/1	Z562/2
1	Rear guard II	Z562 000.000.218.1	1		
2	Rear guard III	Z562 000.219.001.1	1		
3					



Rotary feeder assembly

**ROTARY FEEDER ASSEMBLY**

No. in dwg	Part name	Drawing or standard no.	Number of pieces		
			Z562	Z 562/1	Z562/2
1	Rotor body	Z562 018.001.000	1		
2	Right pickup mounting	Z562 018.000.020	1		
3	Left pickup mounting	Z562 018.013.100	1		
4	Rotor	Z562 068.200.000	1		
5	Bearing assembly, UCFC 210		2		
6	Rotor pipe cover	Z582 070.270.00	2		
7	Seeger ring Z65		1		
8	Nut, M10	M-82175	2		
9	Bolt M10x45 – 8.8	M-82105	2		
10	Wheel hub	Z562 063.440.000	1		
11	Wheel, Z28	Z582 070.015.00	1		
12	12B1 Z22 chain wheel	Z562 018.014.000	1		
13	Clutch I	Z562 018.018.000	1		
14	Bolt, M6x40 – 10.9	M-82302	1		
15	Clutch shaft	Z562 018.000.021	1		
16	Bearing, FD207		1		
17	Sheet metal mount, D207		2		
18	Clutch II	Z562 096.022.000	1		
19	Key, A8x7x54		1		
20	Key, A10x8x36		1		
21	12B1 Z19 chain wheel	Z562 018.015.000	1		
22	Bearing 6204		1		
23	Wheel Z14 12B1	Z562 018.012.020	2		
24	Stretch lever	Z562 018.012.100	2		
25	Bearing 6204				

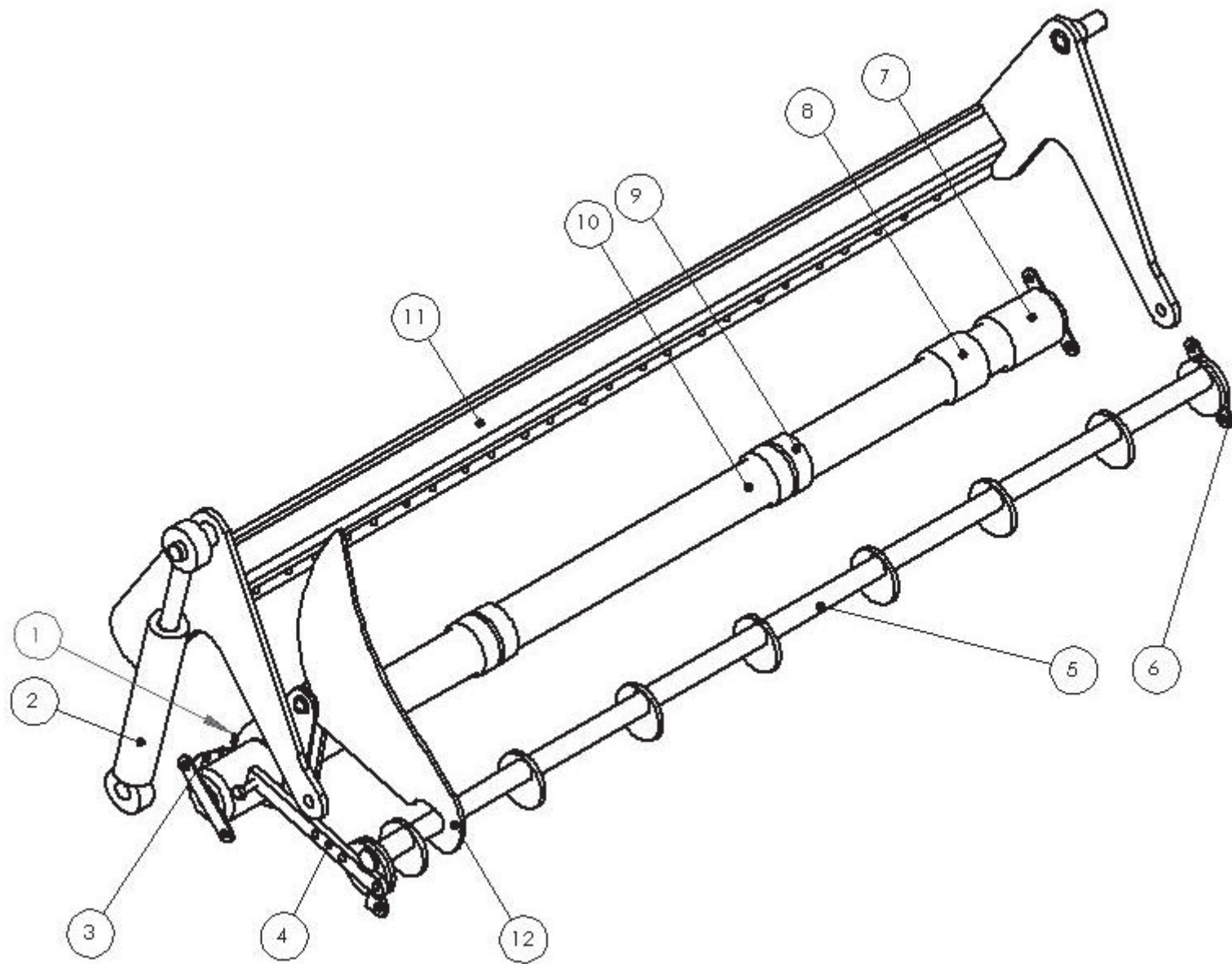


Rotary feeder assembly

***ROTARY FEEDER ASSEMBLY***

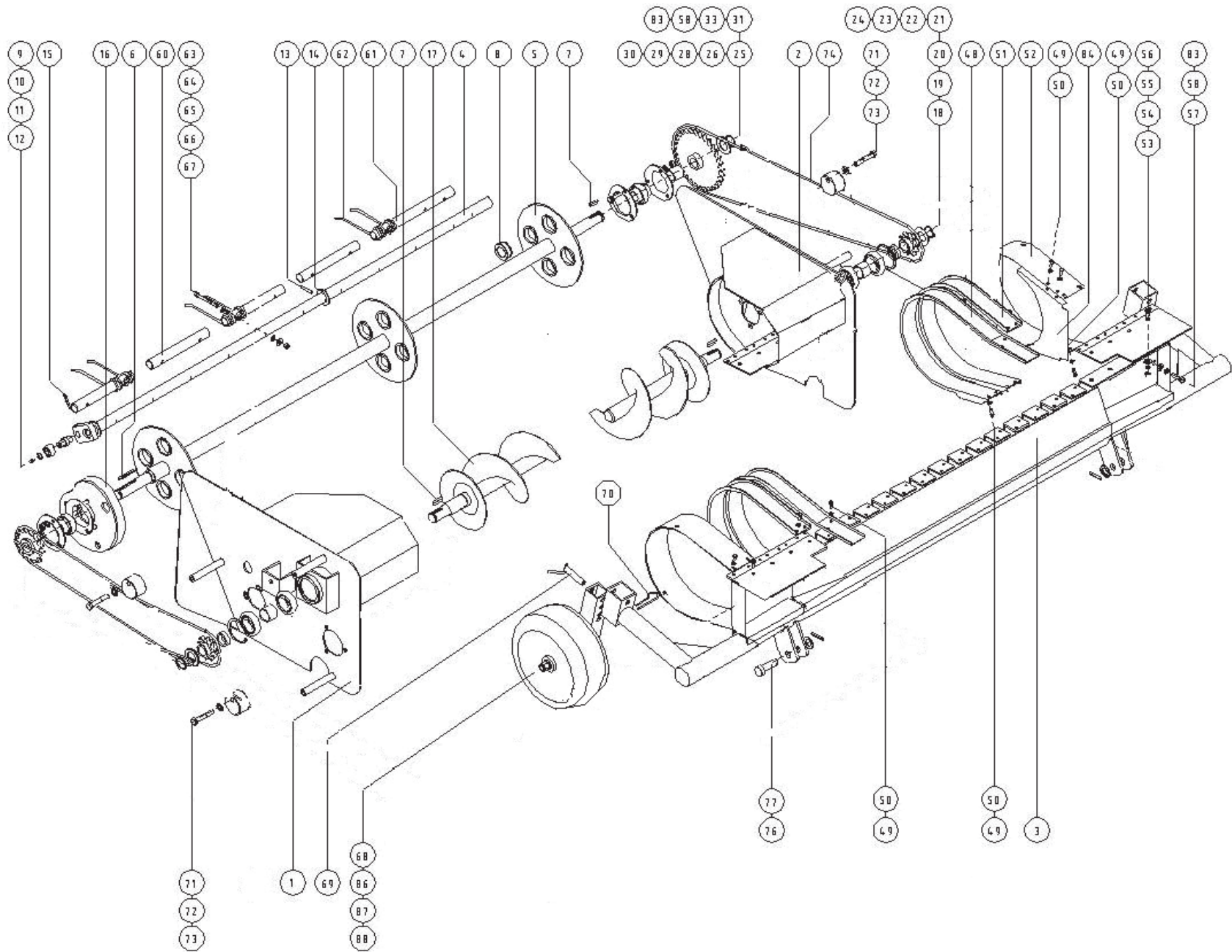
No. in dwg	Part name	Drawing or standard no.	Number of pieces		
			Z562	Z 562/1	Z562/2
26	Stretcher	Z562 061.005.017	1		
27	Sege ring, W47		2		
28	Sege ring Z28		2		
29	Chain 12B 1 – 75 links		1		
30	Chain, 12B2 – 22 links		1		





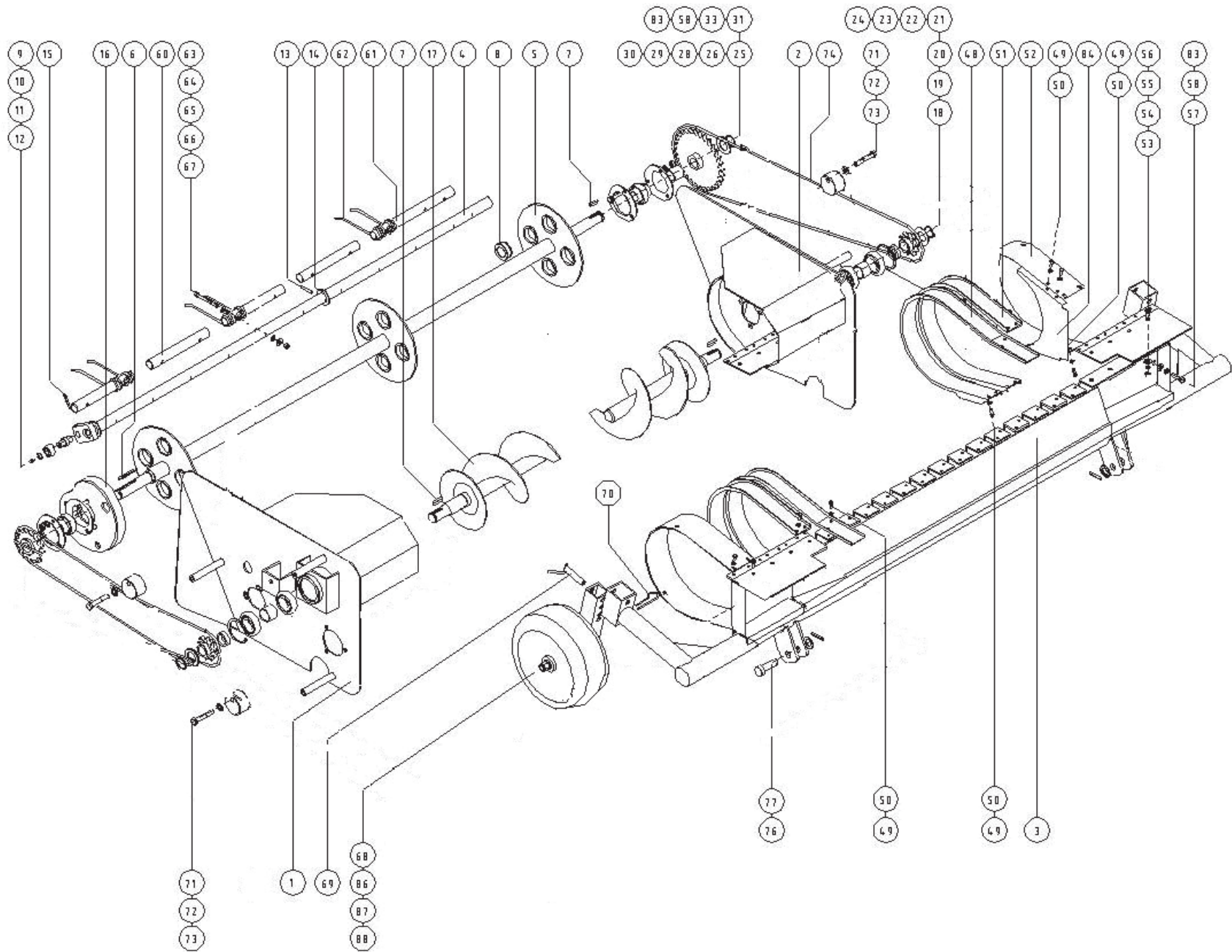
***CUTTER ASSEMBLY***

No. in dwg	Part name	Drawing or standard no.	Number of pieces		
			Z562	Z 562/1	Z562/2
1	Tension spring	Z3SPN3/25/150	13		
2	Actuator	POD-HSL-000021-1	2		
3	Cutter lever	Z562 018.005.100	13		
	Pin	Z562 018.005.003	13		
	Cutter follower	Z562 018.005.002	13		
	Seeger ring Z16		13		
4	Lever	Z562 018.011.001	1		
5	Cutter lock	Z562 018.009.000	1		
6	Lock	Z562 018.000.010	3		
7	Spacing bushing I	Z562 018.000.011	2		
8	Spacing bushing II	Z562 018.000.007	10		
9	Spacing bushing III	Z562 018.000.008	4		
10	Tube	Z562 018.000.006	1		
11	Beam	Z562 018.004.000	1		
12	Cutter	POD-NOZ-000014	13		
13					



**PICKUP, COMPLETE**

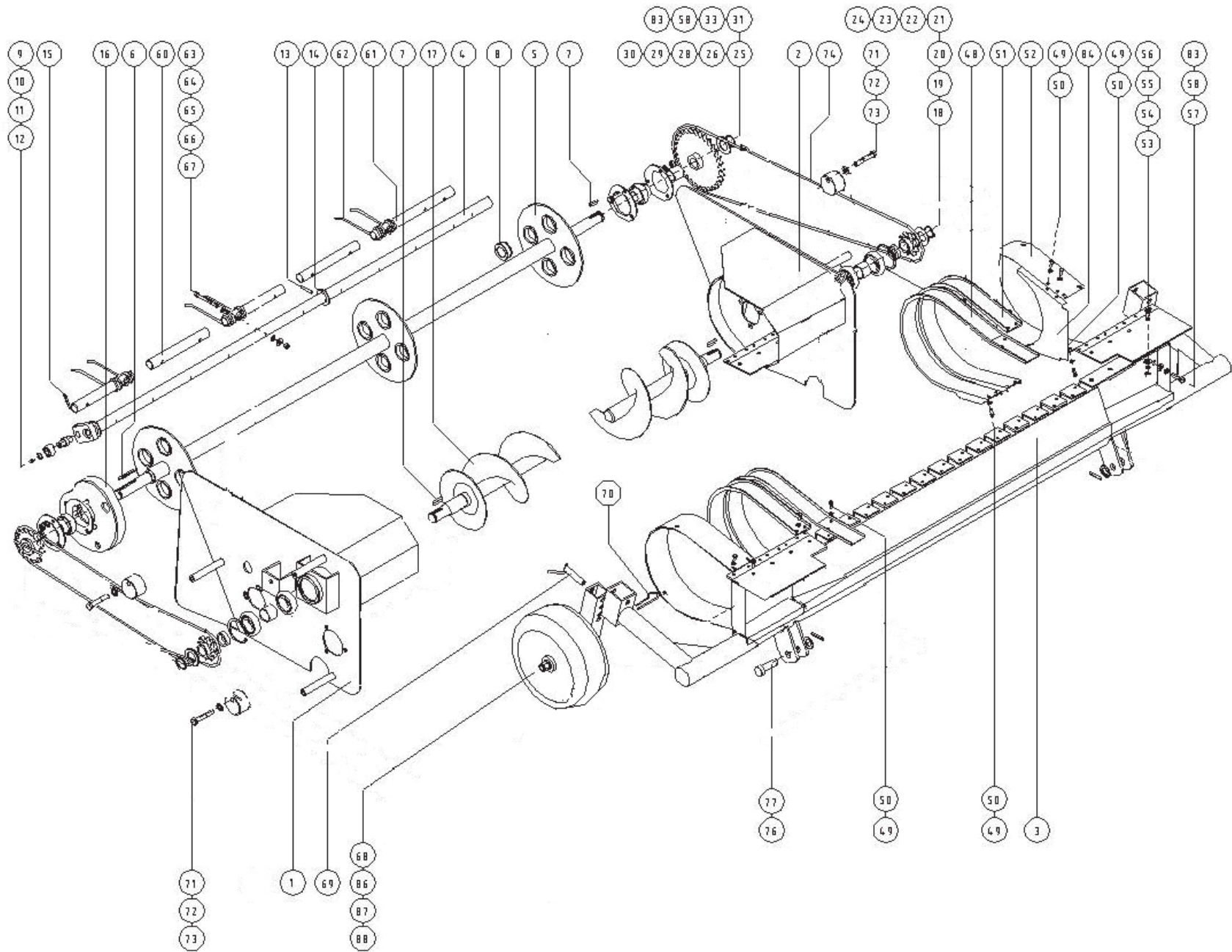
No. in dwg	Part name	Drawing or standard no.	Number of pieces		
			Z562	Z 562/1	Z562/2
1	Left welded wall	Z-562 018.023.000	1		
2	Right welded wall	Z-562 018.024.000	1		
3	Welded frame	Z-562 018.025.000	1		
4	Spring axis, welded	Z-562 096.004.000	4		
5	Primary axle, welded	Z-562 096.005.000	1		
6	Key, A8x7x70	PN/M – 85005	1		
7	Key, A8x7x36	PN/M – 85005	4		
8	Slide bushing	Z-562 096.000.009	12		
9	Roller pivot	Z-562 096.004.003.1	4		
10	Bearing, RT – 15	PN/M – 86100	4		
11	Spring ring, Z – 15	PN/M – 85111	4		
12	Grease nipple, M6x1	DIN 3405A	4		
13	Spring pin, 6x45	PN/M – 85023	4		
14	Plain washer, Ø31	Z-562 096.004.006	4		
15	Spring pin, 8x50	PN/M – 85023	4		
16	Roller raceway	Z-562 096.006.000	1		
17	Worm conveyer, L+R	Z-562 096.007.100	1+1		
18	Wheel	Z-582 090.260.00	1		
19	Bushing I	Z-562 096.007.003	2		
20	Bushing II	Z-562 096.007.004	2		
21	Bearing, 6207 RS	PN/M – 86100	4		
22	Spring ring, Z – 30	PN/M – 85111	2		
23	Spring ring, W – 72	PN/M – 85111	2		
24	Plain washer Ø31	PN/M – 82005	2		



**PICKUP, COMPLETE**

No. in dwg	Part name	Drawing or standard no.	Number of pieces		
			Z562	Z 562/1	Z562/2
25	Sheet metal mount, P – 206	PN ISO 3228:1996	6		
26	Bearing, S A 206	PN/M – 86120	3		
28	Wheel	Z-582 090.280.00	3		
29	Spacing bushing	Z-562 096.000.014	1		
30	Spring ring, Z – 30	PN/M – 85111	2		
31	Plain washer Ø31	PN/M – 82005	2		
32	Bolt, M10x16 5.8 – B	PN/M – 82105	6		
33	Nut, M10 5 – B	PN/M – 82175	12		
36	Key, A8x7x54	PN/M – 85005	1		
37	Special washer	Z-562 096.000.019	1		
38	Spacing bushing II	Z-562 096.000.020	1		
39	Spacing bushing III	Z-562 096.000.023	1		
48	Guard I	Z-562 018.000.022	14		
49	Bolt, M6x16 8.8 – B	PN/M – 82105	94		
50	Plain washer Ø6.5	PN/M – 82030	94		
51	Guard II	Z-562 096.000.025	6		
52	Guard III, L+R	Z-562 096.000.026	1+1		
53	Screw, M8x25 5.8 – B	PN/M – 82208	8		
54	Nut, M8 5 – B	PN/M – 82144	8		
55	Spring washer, Ø8.2	PN/M – 82008	8		
56	Plain washer Ø8.4	PN/M – 82005	8		
57	Plain washer Ø10.5	PN/M – 82005	12		
58	Spring washer, Ø10.2	PN/M – 82008	18		

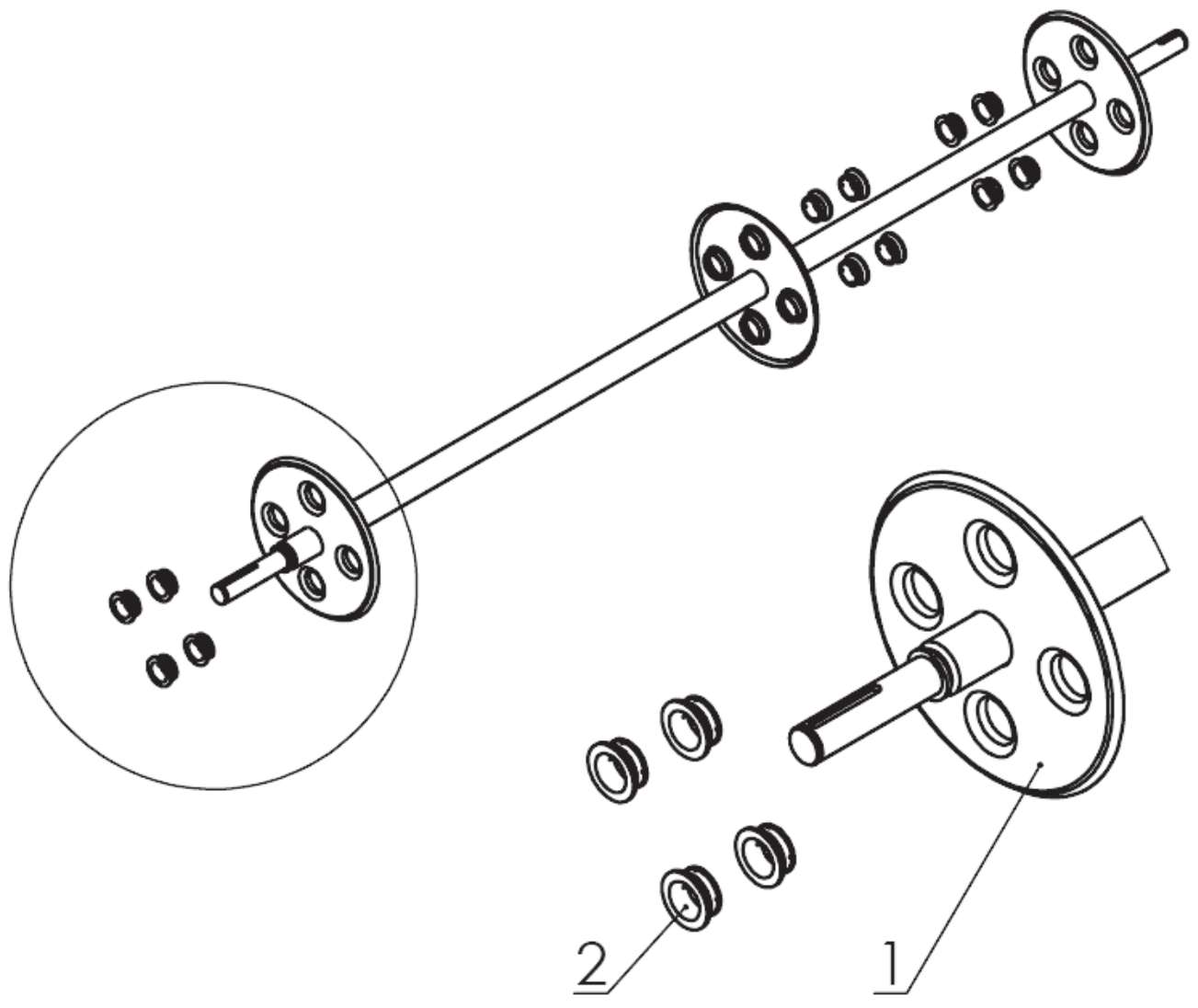




**PICKUP, COMPLETE**

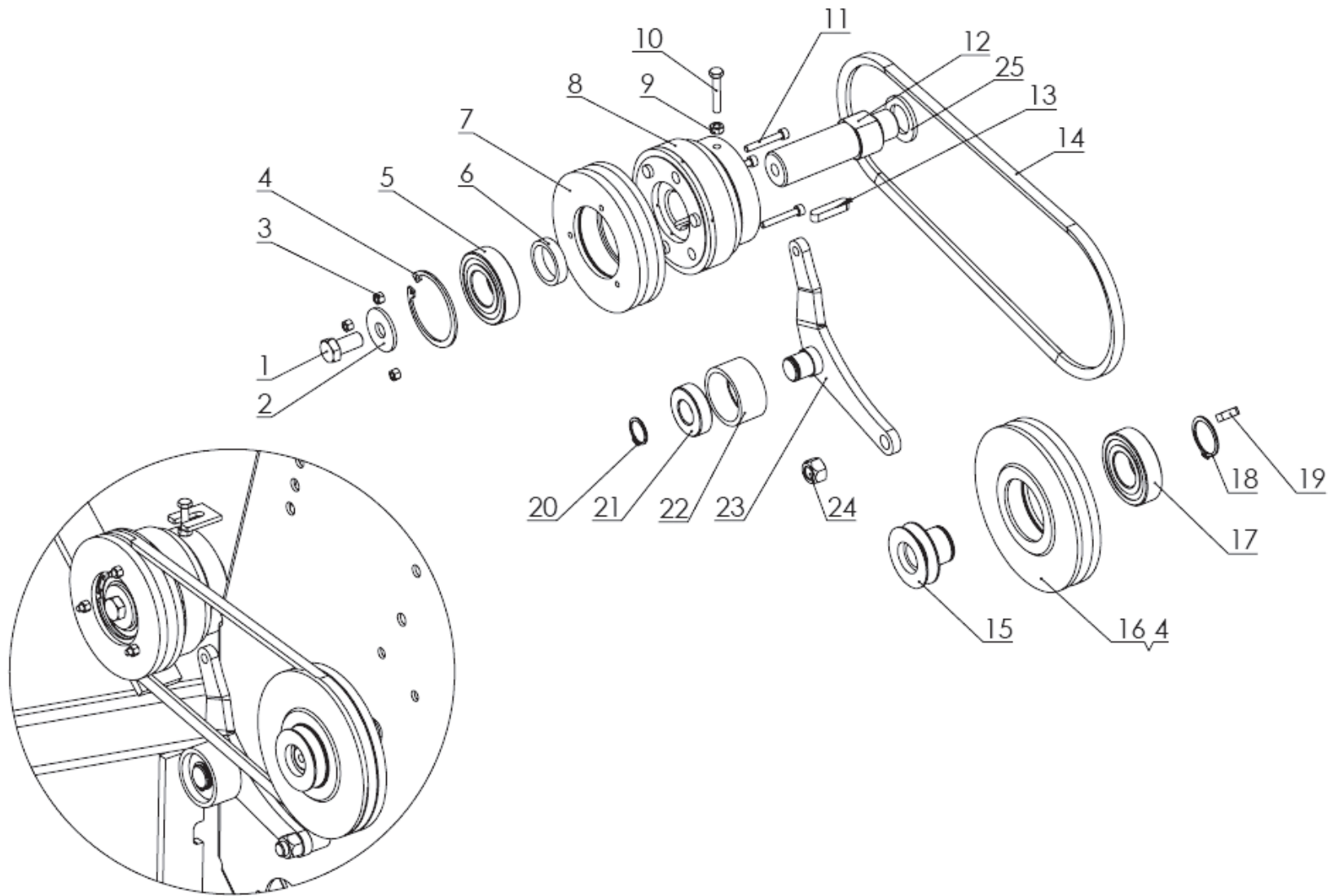
No. in dwg	Part name	Drawing or standard no.	Number of pieces		
			Z562	Z 562/1	Z562/2
59	Side guard, L+R	Z-562 096.027.000	1+1		
60	Pipe I	Z-562 096.000.012	16		
61	Pipe II	Z-562 096.000.013	4		
62	Spring	Z-562 096.000.015	44		
63	Bolt, M8x75 8.8 – B	PN/M – 82101	44		
64	Nut, M8 5 – B	PN/M – 82175	44		
66	Plain washer Ø8.5	PN/M – 82030	44		
67	Plain washer Ø10.5	PN/M – 82030	44		
68	Welded wheel	Z-562 096.016.300	2		
69	Pin, complete	Z-562 096.016.400	2		
70	Farming-type pin, Ø4	DIN 11024	2		
71	Chain stretcher	Z-562 096.000.028	2		
72	Bolt, M12x60 5.8 – B	PN/M – 82101	3		
73	Plain washer Ø13	PN/M – 82005	3		
74	Chain 12B ¾", 57 links	PN/M – 84168	2		
76	Pin II	Z-562 000.000.197	2		
77	Spring pin, 6x45	PN/M – 85023	2		
84	Inner guard, L+R	Z-562 096.029.000	1+1		
86	Welded axle shaft	Z-562 096.016.200	2		
87	Plastic bushing,	25TP (Z-562 096.016.005)	4		
88	Nut, M16 5 – B	PN/M-82175	2		





***PRIMARY AXLE, PRESSED***

No. in dwg	Part name	Drawing or standard no.	Number of pieces		
			Z562	Z 562/1	Z562/2
1	Main axle	Z562 096.005.000.1	11		
2	Bushing	Z562 096.000.009.1	12		



**NET WRAPPER ELECTRIC CONNECTIONS**

No. in dwg	Part name	Drawing or standard no.	Number of pieces		
			Z562	Z 562/1	Z562/2
1	Bolt, M12x25 82105	POD-ELZ-000161	1		
2	Enlarged washer 12 82030	POD-ELZ-000071	1		
3	Self-locking nut, M5 82175	POD-ELZ-000471	3		
4	Seeger ring, W62	POD-ELZ-000111	2		
5	Bearing, 6206 2RS	POD-LOZ-000030	1		
6	Bushing	Z-562 061.005.021	1		
7	Pulley II	POD-TSZ-000079	1		
8	Plate clutch	POD-OGL-000042	1		
9	Nut, M6 82144	POD-ELZ-000041	1		
10	Bolt, M6x35 82105	POD-ELZ-000238	1		
11	Allen bolt, M5x35 82302	POD-ELZ-000473	3		
12	Pin Z562 061.005.003.2	POD-ELZ-000225	1		
13	Key, A8x7x36	POD-ELZ-000321	1		
14	V-belt SPZ900	POD-TSZ-000001-1	1		
15	Slow-speed hub Z562 061.005.001.1	POD-EOS-000104	1		
16	Pulley I	Z562 061.005.402.1	1		
17	Unidirectional clutch ZZ6206	POD-OGL-000037-1	1		
18	Seeger ring Z30	POD-ELZ-000119	1		
19	Key, A6x6x20	POD-ELZ-000317	1		
20	Seeger ring Z20	POD-ELZ-000117	1		
21	Bearing 6004	POD-LOZ-000042	1		
22	Cam follower Z562 061.005.413	POD-TSZ-000080	1		
23	Tensioning arm	Z-562 061.005.410	1		
24	Self-locking nut, M12 82175	POD-ELZ-000046	1		
25	Nord-Lock NL24 washer	POD-ELZ-000483	1		

